

Converting Colors

HunterLab(82.4153, -0.2307,
8.3123)

Have a look what the booklet for
HunterLab(82.4153, -0.2307, 8.3123)
contains.

HunterLab(82.4153, -0.2307, 8.3123)	3
<i>Conversions</i>	4
<i>Details</i>	6
<i>Harmonies</i>	12
<i>Previews</i>	24
<i>Color Blindness Simulation</i>	28
<i>CSS Examples</i>	31

Color

**HunterLab(82.4153, -0.2307,
8.3123)**

Conversions

Conversions Part 1

Format	Color
Hex	E3D4CF
RGB	227, 212, 207
RGB Percent	89%, 83%, 81%
CMY	0.1098, 0.1686, 0.1882
CMYK	0.00, 0.07, 0.09, 0.11
HSL	15°, 26%, 85%
HSV	15°, 9%, 89%
XYZ	66.4845, 67.9228, 68.6378
YIQ	215.9150, 10.5450, 1.6250

Conversions

Conversions Part 2

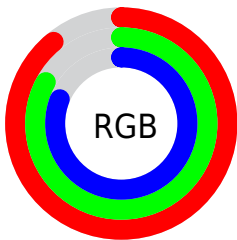
Format	Color
R_{YB}	227, 214, 207
Decimal	14931151
CIE _{Lab}	85.97, 4.33, 4.32
CIE _{LCh}	86, 6.114, 44.970
Yxy	67.9258, 0.3274, 0.3345
Android (android.graphics.Color)	4293121231 (0xFFE3D4CF)
YUV	215.9150, -4.3951, 9.7215
Hunter-Lab	82.4153, -0.2307, 8.3123

Details

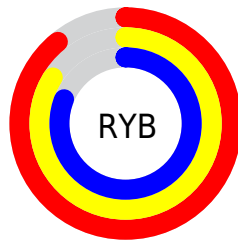
The HunterLab color $82.4153, -0.2307, 8.3123$ is a light color, and the websafe version is hex `CCCCCC`. A complement of this color would be $84.2928, -8.3460, 0.6773$, and the grayscale version is $82.8464, -4.4205, 4.5012$.

A 20% lighter version of the original color is $100.0000, -5.3358, 5.4332$, and $59.3165, 0.9792, 6.4442$ is the 20% darker color. If you saturate the color by 10%, you get $76.6993, 5.1190, 12.1688$, and if you desaturate by 10%, it is $88.3631, -5.2584, 4.2726$.

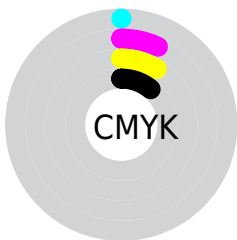
Distribution



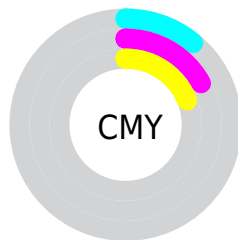
- Red (89%)
- Green (83%)
- Blue (81%)



- Red (89%)
- Yellow (84%)
- Blue (81%)



- Cyan (0%)
- Magenta (7%)
- Yellow (9%)
- Black (11%)



- Cyan (11%)
- Magenta (17%)
- Yellow (19%)

Brightness & Saturation Gradients

These gradients show how the HunterLab color 82.4153, -0.2307, 8.3123 changes by changing the brightness by 10 percent. The first figure shows a shift by +10% for each color and the second figure -10%.

Similar to the brightness gradients but the following saturation gradients show a change of the HunterLab color 82.4153, -0.2307, 8.3123 by changing the saturation by 10% instead.

■ 82.4153, -0.2307,
8.3123

■ 82.4153, -0.2307,
8.3123

212.8927, -5.6768,
16.9011

■ 70.5956, 0.1930,
7.4678

107.8174, -1.2064,
10.0718

■ 59.4005, 0.5742,
6.6442

121.3452, -1.7489,
10.9839

■ 48.8691, 0.9067,
5.8425

135.3957, -2.3260,
11.9177

■ 39.0462, 1.1852,
5.0617

149.9502, -2.9358,
12.8729

■ 29.9870, 1.4028,
4.3001

164.9917, -3.5771,
13.8491

■ 21.7626, 1.5500,
3.5541

180.5051, -4.2484,

■ 14.4682, 1.6121,

14.8461

2.8165

196.4764, -4.9487,
15.8636

■ 8.1292, 1.8844,
2.6458

0.0000, NaN, NaN

■ 82.4153, -0.2307,
8.3123

■ 82.4153, -0.2307,
8.3123

■ 76.6993, 5.1190,
12.1688

■ 88.3631, -5.2584,
4.2726

■ 71.2405, 10.8276,
15.7937

■ 94.5117, -9.9909,
0.0789

■ 66.0775, 16.9124,
19.1296

■ 97.5044, -14.1293,
2.3058

■ 61.2536, 23.3721,
22.1005

■ 56.8189, 30.1678,
24.6116

■ 52.8298, 37.2016,
26.5521

■ 49.3455, 44.2922,
27.8089

■ 46.4220, 51.1588,
28.2968

■ 44.0982, 57.4106,
28.0739

Harmonies

Analogous

The Analogous color harmony consists of three colors that are next to each other on the color wheel.



82.4171, 1.3113, 5.9072



82.4153, -0.2307, 8.3123



82.4171, -2.8833, 9.6692

Triad

The Triadic color harmony groups three colors that are evenly spaced from another and form a triangle on the color wheel.



82.4171, -0.2329, 8.3136



82.4171, -9.9622, 5.9127



82.4171, -2.8892, -1.0585

Complementary

The Complementary color scheme is a pair of colors which are on the opposite of each other on the color wheel.



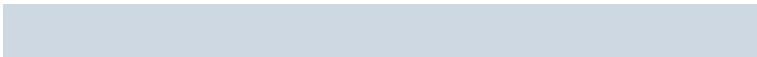
82.4153, -0.2307, 8.3123



84.2928, -8.3460, 0.6773

Split Complementary

Split-complementary colors differ from the complementary color scheme. The scheme consists of three colors, the original color and two neighbors of the complement color.



82.4171, -5.9097, -1.0569



82.4153, -0.2307, 8.3123



82.4171, -9.9638, 3.0394

Square

The Square scheme is like the rectangle color scheme, but the four colors are evenly spaced on the color wheel.



82.4171, -0.2329, 8.3136



82.4171, -8.4856, 8.3175



82.4171, -8.4898, 0.4659



82.4171, -0.2373, 0.4616

Rectangle

The Rectangle color scheme consists of four colors that form a rectangle on the color wheel.



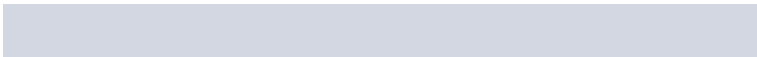
82.4153, -0.2307, 8.3123



82.4171, -4.9069, 9.8268



82.4171, -8.4898, 0.4659



82.4171, -3.8958, -1.2377

Sweetspot

The Sweet Spot groups the original color and five complimentary colors.



82.4171, -0.2329, 8.3136



97.9345, -3.6292, 6.8387



81.3827, 4.9224, -0.1137



45.0553, -1.4655, 3.3364

0.0000, NaN, NaN



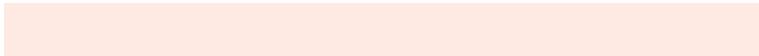
46.2646, -2.4686, 2.5136

Same Dimension

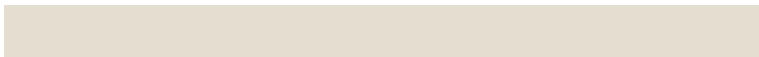
The Same Dimension uses a secret algorithm to generate beautiful new colors.



82.4171, -0.2329, 8.3136



92.5369, 1.0807, 10.5000



85.4864, -5.3939, 11.6393



38.6664, 0.0496, 4.0396



33.7272, 43.6542, 21.5468



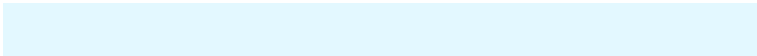
9.9276, 9.7072, 6.2873

Inverse Universe

The Inverse Universe completely reimagines the original color for something new.



84.2928, -8.3460, 0.6773



95.2189, -10.5242, -0.4202



81.1784, -3.2226, -3.1131



39.6151, -4.0542, 0.1772



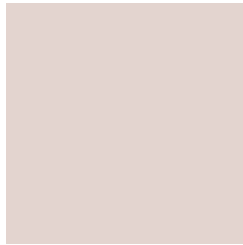
44.9892, -12.9119, -28.3595



12.8087, -4.3217, -6.6805

Previews

White Background



This preview shows how the HunterLab color 82.4153, -0.2307, 8.3123 looks on a white background.

Color Contrast Check

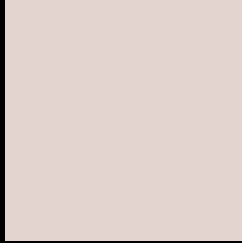
Large Text (above 18pt) WCAG AA × Fail

Any Text WCAG AA × Fail

Large Text (above 18pt) WCAG AAA × Fail

Any Text WCAG AAA × Fail

Black Background



This preview shows how the HunterLab color 82.4153, -0.2307, 8.3123 looks on a black background.

Color Contrast Check

Large Text (above 18pt) WCAG AA ✓ Pass

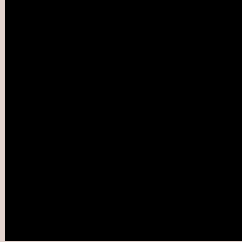
Any Text WCAG AA ✓ Pass

Large Text (above 18pt) WCAG AAA ✓ Pass

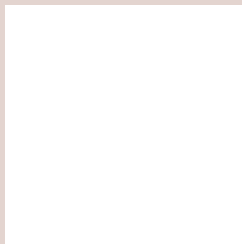
Any Text WCAG AAA ✓ Pass

If you want to check with other color combinations, try the [Color Contrast Checker](#).

HunterLab 82.4153, -0.2307, 8.3123 Background



This preview shows how black text looks on a background with the HunterLab color 82.4153, -0.2307, 8.3123.



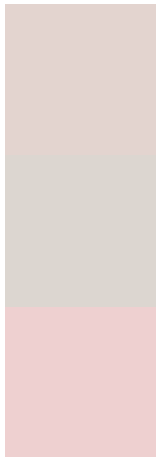
This preview shows how white text looks on a background with the HunterLab color 82.4153, -0.2307,

8.3123.

Color Blindness Simulation

Color vision deficiency is a very complex topic, and I could not describe the different causes any better than Wikipedia does, so if you want to learn more, you should check out their [article about color blindness](#).

Dichromacy



Original Color

82.4153, -0.2307, 8.3123

Protanopia

82.3789, -3.4350, 7.7522

Deuteranopia

82.3668, 5.8258, 7.9006



Tritanopia

82.4105, 5.5835, -0.8866

Trichromacy



Original Color

82.4153, -0.2307, 8.3123

Protanomaly

82.3593, -1.9283, 7.7563

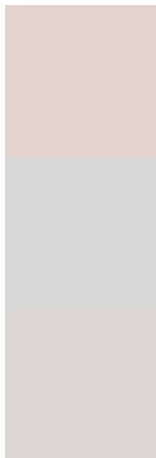
Deuteranomaly

82.2481, 3.8985, 7.7317

Tritanomaly

82.3806, 3.4905, 2.5904

Monochromacy



Original Color

82.4153, -0.2307, 8.3123

Achromatopsia

82.8665, -4.4215, 4.5023

Achromatomaly

82.8376, -3.1228, 5.9332

CSS Examples

Text

The CSS property to change the color of the text to HunterLab 82.4153, -0.2307, 8.3123 is called "color". The color property can be set on classes, ids or directly on the HTML element.

This example shows how text in the color `rgb(227, 212, 207)` looks like.

```
.text, #text, p{  
    color:rgb(227, 212, 207)  
}
```

If you want to add a text shadow in that color use the text-shadow property, you can generate a text shadow directly with our [CSS Text Shadow Generator](#).

Here you see how black text with a 4 pixel rgb(227, 212, 207) colored shadow looks like.

```
.shadow{ text-shadow: 4px 4px 2px rgb(227, 212, 207) }
```

Border

The CSS property to change the border of an element to HunterLab 82.4153, -0.2307, 8.3123 is called "border". The border property can be set on classes, ids or directly on the HTML element.

This example shows the color as border, it can be applied via the CSS property "border" or "border-color".

```
.border, #border, table{ border:4px solid rgb(227, 212, 207) }
```


If only the border color should be changed use the property border-color.

```
.border{ border-color:rgb(227, 212, 207) }
```

If you want to add a box shadow in that color use:

Here you see how a box with a 4 pixel rgb(227, 212, 207) colored shadow looks like.

```
.boxshadow{ -moz-box-shadow:4px 4px 4px  
4px rgb(227, 212, 207); -webkit-box-  
shadow:4px 4px 4px 4px rgb(227, 212, 207);  
box-shadow:4px 4px 4px 4px rgb(227, 212,  
207) }
```

Background

The CSS property to change the background color of an element to HunterLab 82.4153, -0.2307, 8.3123 is called "background". The background property can be set on classes, ids or directly on the HTML element.

```
.background, #background, body{  
background: rgb(227, 212, 207) }
```

If only the background color should be changed can be used:

```
.background{ background-color: rgb(227,  
212, 207) }
```

This example shows the color as background, it is applied via the CSS property "background".

To optimize and compress your CSS code, you can use our [online CSS compressor and optimizer](#) based on csstidy. If you want to create a linear or radial gradient as background or border, check our [CSS Gradient Generator](#).

Hey! You found this booklet interesting? Support Converting Colors with the new Membership Option!

The pro membership hides all ads, plus gives you double the colors in the color bucket, and more awesome pro features!

[Learn more, Memberships starting at \\$2.50/m!](#)

**Follow me
on Twitter!**

@ConvertingColor