

Converting Colors

HunterLab(82.4260, 1.7765,
5.0596)

Have a look what the booklet for
HunterLab(82.4260, 1.7765, 5.0596)
contains.

HunterLab(82.4242, 1.7787, 5.0582)	3
<i>Conversions</i>	4
<i>Details</i>	6
<i>Harmonies</i>	12
<i>Previews</i>	24
<i>Color Blindness Simulation</i>	28
<i>CSS Examples</i>	31

Color

**HunterLab(82.4242, 1.7787,
5.0582)**

Conversions

Conversions Part 1

Format	Color
Hex	E4D3D6
RGB	228, 211, 214
RGB Percent	89%, 83%, 84%
CMY	0.1059, 0.1725, 0.1608
CMYK	0.00, 0.07, 0.06, 0.11
HSL	349°, 24%, 86%
HSV	349°, 7%, 89%
XYZ	67.4267, 67.9375, 73.1777
YIQ	216.4250, 9.1690, 4.5370

Conversions

Conversions Part 2

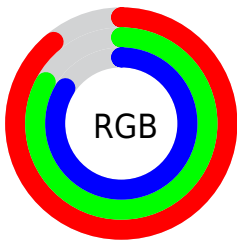
Format	Color
R _Y B	228, 211, 214
Decimal	14996438
CIE Lab	85.98, 6.38, 0.63
CIE LCh	86, 6.412, 5.668
Yxy	67.9405, 0.3233, 0.3258
Android (android.graphics.Color)	4293186518 (0xFFE4D3D6)
YUV	216.4250, -1.1955, 10.1513
Hunter-Lab	82.4242, 1.7787, 5.0582

Details

The HunterLab color $82.4242, 1.7787, 5.0582$ is a light color, and the websafe version is hex `CCCCCC`. A complement of this color would be $86.4717, -10.5421, 4.2542$, and the grayscale version is $83.0540, -4.4316, 4.5125$.

A 20% lighter version of the original color is $100.0000, -5.3358, 5.4332$, and $59.2996, 2.7247, 3.7922$ is the 20% darker color. If you saturate the color by 10%, you get $75.1655, 10.7030, 5.6757$, and if you desaturate by 10%, it is $90.0554, -6.8780, 4.7242$.

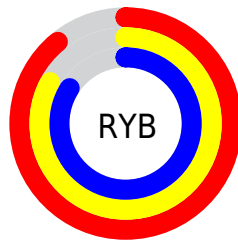
Distribution



Red (89%)

Green (83%)

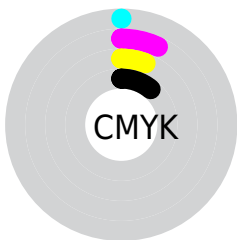
Blue (84%)



Red (89%)

Yellow (83%)

Blue (84%)

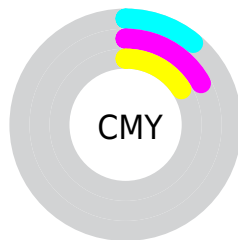


Cyan (0%)

Magenta (7%)

Yellow (6%)

Black (11%)



Cyan (11%)

Magenta (17%)

Yellow (16%)

Brightness & Saturation Gradients

These gradients show how the HunterLab color 82.4242, 1.7787, 5.0582 changes by changing the brightness by 10 percent. The first figure shows a shift by +10% for each color and the second figure -10%.

Similar to the brightness gradients but the following saturation gradients show a change of the HunterLab color 82.4242, 1.7787, 5.0582 by changing the saturation by 10% instead.

82.4242, 1.7787,
5.0582

82.4242, 1.7787,
5.0582

212.9049, -2.9508,
12.3764

70.6040, 2.1064,
4.3870

107.8272, 0.9826,
6.4962

59.4085, 2.3865,
3.7470

121.3553, 0.5246,
7.2580

48.8766, 2.6119,
3.1411

135.4062, 0.0290,
8.0472

39.0531, 2.7762,
2.5713

149.9610, -0.5022,
8.8630

29.9934, 2.8709,
2.0402

165.0029, -1.0672,
9.7045

21.7683, 2.8841,
1.5506

180.5167, -1.6645,

14.4731, 2.7976,

10.5711

1.1061

196.4882, -2.2928,
11.4619

■ 8.1342, 2.9837,
0.7655

0.0000, NaN, NaN

■ 82.4242, 1.7787,
5.0582

■ 82.4242, 1.7787,
5.0582

■ 75.1655, 10.7030,
5.6757

■ 90.0554, -6.8780,
4.7242

■ 68.3395, 19.8941,
6.6254

■ 97.4755, -14.4574,
4.0138

■ 62.0303, 29.2874,
7.9639

■ 97.5880, -13.8310,
2.4118

■ 56.3389, 38.7207,
9.7374

■ 51.3837, 47.8743,
11.9616

■ 47.2915, 56.2238,
14.5877

■ 44.1754, 63.0682,
17.4672

■ 42.0963, 67.7168,
20.3451

■ 40.9993, 69.8843,
22.9008

Harmonies

Analogous

The Analogous color harmony consists of three colors that are next to each other on the color wheel.



82.4260, 1.2484, 2.0517



82.4242, 1.7787, 5.0582



82.4260, 0.6287, 7.8096

Triad

The Triadic color harmony groups three colors that are evenly spaced from another and form a triangle on the color wheel.



82.4260, 1.7765, 5.0596



82.4260, -7.9407, 9.0776



82.4260, -6.9090, -0.9962

Complementary

The Complementary color scheme is a pair of colors which are on the opposite of each other on the color wheel.



82.4242, 1.7787, 5.0582



86.4717, -10.5421, 4.2542

Split Complementary

Split-complementary colors differ from the complementary color scheme. The scheme consists of three colors, the original color and two neighbors of the complement color.



82.4260, -9.3158, 1.0194



82.4242, 1.7787, 5.0582



82.4260, -9.9051, 6.8496

Square

The Square scheme is like the rectangle color scheme, but the four colors are evenly spaced on the color wheel.



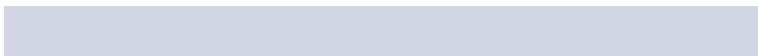
82.4260, 1.7765, 5.0596



82.4260, -5.0060, 10.0723



82.4260, -10.4046, 3.9096



82.4260, -3.7972, -1.5195

Rectangle

The Rectangle color scheme consists of four colors that form a rectangle on the color wheel.



82.4242, 1.7787, 5.0582



82.4260, -0.9223, 9.1509



82.4260, -10.4046, 3.9096



82.4260, -7.8258, -0.4671

Sweetspot

The Sweet Spot groups the original color and five complimentary colors.



82.4260, 1.7765, 5.0596



98.2453, -3.3674, 5.5010



82.5723, 3.1778, -1.7674



45.4928, -1.6032, 2.5433

0.0000, NaN, NaN



46.2646, -2.4686, 2.5136

Same Dimension

The Same Dimension uses a secret algorithm to generate beautiful new colors.



82.4260, 1.7765, 5.0596



92.2296, 3.6187, 5.8333



83.9691, -1.5231, 8.1971



37.9595, 1.6621, 2.4195



31.0252, 53.4584, 17.5142



8.5059, 14.7983, 3.7009

Inverse Universe

The Inverse Universe completely reimagines the original color for something new.



82.4260, 1.7765, 5.0596



92.2296, 3.6187, 5.8333



84.8665, -7.2685, 0.8882



37.9595, 1.6621, 2.4195



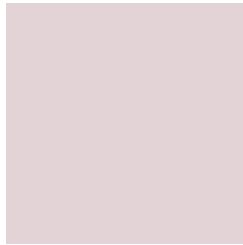
31.0252, 53.4584, 17.5142



8.5059, 14.7983, 3.7009

Previews

White Background



This preview shows how the HunterLab color 82.4242, 1.7787, 5.0582 looks on a white background.

Color Contrast Check

Large Text (above 18pt) WCAG AA × Fail

Any Text WCAG AA × Fail

Large Text (above 18pt) WCAG AAA × Fail

Any Text WCAG AAA × Fail

Black Background



This preview shows how the HunterLab color 82.4242, 1.7787, 5.0582 looks on a black background.

Color Contrast Check

Large Text (above 18pt) WCAG AA ✓ Pass

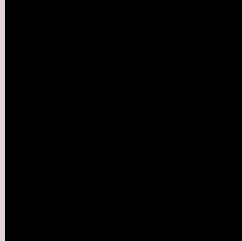
Any Text WCAG AA ✓ Pass

Large Text (above 18pt) WCAG AAA ✓ Pass

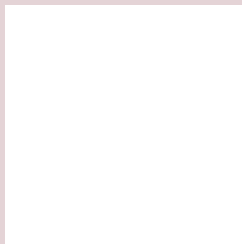
Any Text WCAG AAA ✓ Pass

If you want to check with other color combinations, try the [Color Contrast Checker](#).

HunterLab 82.4242, 1.7787, 5.0582 Background



This preview shows how black text looks on a background with the HunterLab color 82.4242, 1.7787, 5.0582.



This preview shows how white text looks on a background with the HunterLab color 82.4242, 1.7787,

Color Blindness Simulation

Color vision deficiency is a very complex topic, and I could not describe the different causes any better than Wikipedia does, so if you want to learn more, you should check out their [article about color blindness](#).

Dichromacy



Original Color

82.4242, 1.7787, 5.0582

Protanopia

82.5294, -2.4244, 4.1397

Deuteranopia

82.3717, 6.2696, 4.5917



Tritanopia

82.4105, 5.5835, -0.8866

Trichromacy



Original Color

82.4242, 1.7787, 5.0582

Protanomaly

82.4769, -1.0959, 4.5867

Deuteranomaly

82.3595, 4.7023, 4.5500

Tritanomaly

82.4773, 4.0108, 1.2137

Monochromacy



Original Color

82.4242, 1.7787, 5.0582

Achromatopsia

82.8665, -4.4215, 4.5023

Achromatomaly

82.5924, -2.2693, 4.7020

CSS Examples

Text

The CSS property to change the color of the text to HunterLab 82.4242, 1.7787, 5.0582 is called "color". The color property can be set on classes, ids or directly on the HTML element.

This example shows how text in the color `rgb(228, 211, 214)` looks like.

```
.text, #text, p{  
    color:rgb(228, 211, 214)  
}
```

If you want to add a text shadow in that color use the text-shadow property, you can generate a text shadow directly with our [CSS Text Shadow Generator](#).

Here you see how black text with a 4 pixel rgb(228, 211, 214) colored shadow looks like.

```
.shadow{ text-shadow: 4px 4px 2px rgb(228, 211, 214) }
```

Border

The CSS property to change the border of an element to HunterLab 82.4242, 1.7787, 5.0582 is called "border".

The border property can be set on classes, ids or directly on the HTML element.

This example shows the color as border, it can be applied via the CSS property "border" or "border-color".

```
.border, #border, table{ border:4px solid rgb(228, 211, 214) }
```


If only the border color should be changed use the property `border-color`.

```
.border{ border-color:rgb(228, 211, 214) }
```

If you want to add a box shadow in that color use:

Here you see how a box with a 4 pixel `rgb(228, 211, 214)` colored shadow looks like.

```
.boxshadow{ -moz-box-shadow:4px 4px 4px  
4px rgb(228, 211, 214); -webkit-box-  
shadow:4px 4px 4px 4px rgb(228, 211, 214);  
box-shadow:4px 4px 4px 4px rgb(228, 211,  
214) }
```

Background

The CSS property to change the background color of an element to HunterLab 82.4242, 1.7787, 5.0582 is called "background". The background property can be set on classes, ids or directly on the HTML element.

```
.background, #background, body{  
background: rgb(228, 211, 214) }
```

If only the background color should be changed can be used:

```
.background{ background-color: rgb(228,  
211, 214) }
```

This example shows the color as background, it is applied via the CSS property "background".

To optimize and compress your CSS code, you can use our [online CSS compressor and optimizer](#) based on csstidy. If you want to create a linear or radial gradient as background or border, check our [CSS Gradient Generator](#).

Hey! You found this booklet interesting? Support Converting Colors with the new Membership Option!

The pro membership hides all ads, plus gives you double the colors in the color bucket, and more awesome pro features!

[Learn more, Memberships starting at \\$2.50/m!](#)

**Follow me
on Twitter!**

@ConvertingColor