

Converting Colors

HunterLab(82.4543, 3.3722,
5.3911)

Have a look what the booklet for
HunterLab(82.4543, 3.3722, 5.3911)
contains.

HunterLab(82.3931, 3.1559, 5.5261)	3
<i>Conversions</i>	4
<i>Details</i>	6
<i>Harmonies</i>	12
<i>Previews</i>	24
<i>Color Blindness Simulation</i>	28
<i>CSS Examples</i>	31

Color

**HunterLab(82.3931, 3.1559,
5.5261)**

Conversions

Conversions Part 1

Format	Color
Hex	E7D2D5
RGB	231, 210, 213
RGB Percent	91%, 82%, 84%
CMY	0.0941, 0.1764, 0.1647
CMYK	0.00, 0.09, 0.08, 0.09
HSL	351°, 30%, 86%
HSV	351°, 9%, 91%
XYZ	68.0118, 67.8862, 72.4696
YIQ	216.6210, 11.5530, 5.3850

Conversions

Conversions Part 2

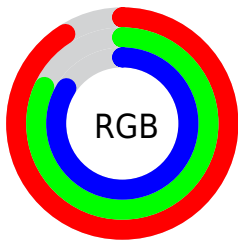
Format	Color
R _Y B	231, 210, 213
Decimal	15192789
CIE Lab	85.95, 7.78, 1.16
CIE LCh	86, 7.863, 8.454
Yxy	67.8892, 0.3264, 0.3258
Android (android.graphics.Color)	4293382869 (0xFFE7D2D5)
YUV	216.6210, -1.7852, 12.6104
Hunter-Lab	82.3931, 3.1559, 5.5261

Details

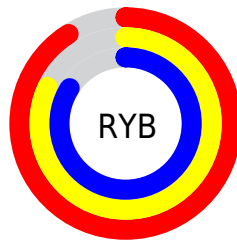
The HunterLab color $82.3931, 3.1559, 5.5261$ is a light color, and the websafe version is hex `CCCCCC`. A complement of this color would be $87.4395, -11.8341, 3.9007$, and the grayscale version is $83.1405, -4.4362, 4.5172$.

A 20% lighter version of the original color is $100.0000, -5.3358, 5.4332$, and $59.4639, 3.2210, 4.4446$ is the 20% darker color. If you saturate the color by 10%, you get $75.0658, 12.1499, 6.5273$, and if you desaturate by 10%, it is $90.1104, -5.5512, 4.8008$.

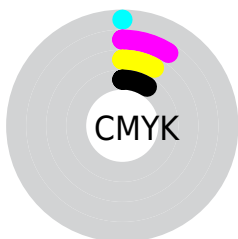
Distribution



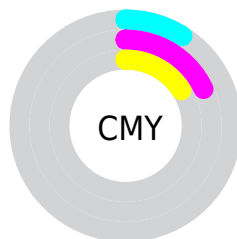
- Red (91%)
- Green (82%)
- Blue (84%)



- Red (91%)
- Yellow (82%)
- Blue (84%)



- Cyan (0%)
- Magenta (9%)
- Yellow (8%)
- Black (9%)



- Cyan (9%)
- Magenta (18%)
- Yellow (16%)

Brightness & Saturation Gradients

These gradients show how the HunterLab color 82.3931, 3.1559, 5.5261 changes by changing the brightness by 10 percent. The first figure shows a shift by +10% for each color and the second figure -10%.

Similar to the brightness gradients but the following saturation gradients show a change of the HunterLab color 82.3931, 3.1559, 5.5261 by changing the saturation by 10% instead.

82.3931, 3.1559,
5.5261

82.3931, 3.1559,
5.5261

212.8623, -1.0887,
13.0215

70.5745, 3.4187,
4.8309

107.7932, 2.4811,
7.0089

59.3806, 3.6306,
4.1654

121.3199, 2.0802,
7.7915

48.8504, 3.7839,
3.5324

135.3695, 1.6397,
8.6009

39.0288, 3.8714,
2.9336

149.9231, 1.1619,
9.4362

29.9712, 3.8837,
2.3709

164.9638, 0.6485,
10.2965

21.7484, 3.8073,
1.8463

180.4763, 0.1014,

14.4557, 3.6221,

11.1813

1.3621

196.4467, -0.4782,
12.0898

■ 8.1167, 3.7419,
1.0321

0.0000, NaN, NaN

■ 82.3931, 3.1559,
5.5261

■ 82.3931, 3.1559,
5.5261

■ 75.0658, 12.1499,
6.5273

■ 90.1104, -5.5512,
4.8008

■ 68.1930, 21.4275,
7.8476

■ 97.7630, -13.3639,
3.8469

■ 61.8640, 30.9149,
9.5328

■ 97.8413, -12.9289,
2.7324

■ 56.1858, 40.4304,
11.6111

■ 51.2827, 49.6207,
14.0695

■ 47.2849, 57.9182,
16.8195

■ 44.3030, 64.5896,
19.6708

■ 42.3850, 68.9577,
22.3436

■ 41.4183, 70.9363,
24.5132

Harmonies

Analogous

The Analogous color harmony consists of three colors that are next to each other on the color wheel.



82.3949, 2.6955, 1.8201



82.3931, 3.1559, 5.5261



82.3949, 1.5583, 8.8017

Triad

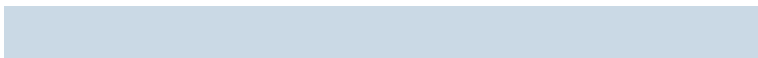
The Triadic color harmony groups three colors that are evenly spaced from another and form a triangle on the color wheel.



82.3949, 3.1536, 5.5275



82.3949, -9.0155, 9.8814



82.3949, -7.1385, -2.4345

Complementary

The Complementary color scheme is a pair of colors which are on the opposite of each other on the color wheel.



82.3931, 3.1559, 5.5261



87.4395, -11.8341, 3.9007

Split Complementary

Split-complementary colors differ from the complementary color scheme. The scheme consists of three colors, the original color and two neighbors of the complement color.



82.3949, -10.1952, -0.0788



82.3931, 3.1559, 5.5261



82.3949, -11.2647, 7.0637

Square

The Square scheme is like the rectangle color scheme, but the four colors are evenly spaced on the color wheel.



82.3949, 3.1536, 5.5275



82.3949, -5.5010, 11.2378



82.3949, -11.6925, 3.4287



82.3949, -3.2948, -2.8927

Rectangle

The Rectangle color scheme consists of four colors that form a rectangle on the color wheel.



82.3931, 3.1559, 5.5261



82.3949, -0.4380, 10.3393



82.3949, -11.6925, 3.4287



82.3949, -8.2901, -1.8332

Sweetspot

The Sweet Spot groups the original color and five complimentary colors.



82.3949, 3.1536, 5.5275



97.3656, -2.4235, 5.6565



82.6651, 5.2352, -3.1947



44.7228, -0.7589, 2.6465

0.0000, NaN, NaN



46.2646, -2.4686, 2.5136

Same Dimension

The Same Dimension uses a secret algorithm to generate beautiful new colors.



82.3949, 3.1536, 5.5275



90.5194, 5.4850, 6.3779



84.5286, -1.1759, 9.2956



37.9491, 1.6058, 2.5687



30.9782, 53.2843, 18.2097



8.4838, 14.7168, 4.0248

Inverse Universe

The Inverse Universe completely reimagines the original color for something new.



82.3949, 3.1536, 5.5275



90.5194, 5.4850, 6.3779



85.2038, -7.5568, -0.2387



37.9491, 1.6058, 2.5687



30.9782, 53.2843, 18.2097



8.4838, 14.7168, 4.0248

Previews

White Background



This preview shows how the HunterLab color 82.3931, 3.1559, 5.5261 looks on a white background.

Color Contrast Check

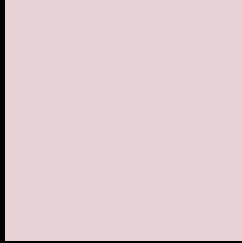
Large Text (above 18pt) WCAG AA × Fail

Any Text WCAG AA × Fail

Large Text (above 18pt) WCAG AAA × Fail

Any Text WCAG AAA × Fail

Black Background



This preview shows how the HunterLab color 82.3931, 3.1559, 5.5261 looks on a black background.

Color Contrast Check

Large Text (above 18pt) WCAG AA ✓ Pass

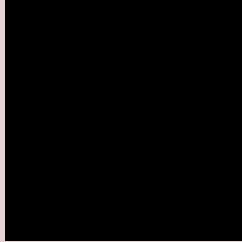
Any Text WCAG AA ✓ Pass

Large Text (above 18pt) WCAG AAA ✓ Pass

Any Text WCAG AAA ✓ Pass

If you want to check with other color combinations, try the [Color Contrast Checker](#).

HunterLab 82.3931, 3.1559, 5.5261 Background



This preview shows how black text looks on a background with the HunterLab color 82.3931, 3.1559, 5.5261.



This preview shows how white text looks on a background with the HunterLab color 82.3931, 3.1559,

Color Blindness Simulation

Color vision deficiency is a very complex topic, and I could not describe the different causes any better than Wikipedia does, so if you want to learn more, you should check out their [article about color blindness](#).

Dichromacy



Original Color

82.3931, 3.1559, 5.5261

Protanopia

82.4982, -2.5949, 4.5855

Deuteranopia

82.3096, 5.9375, 5.4775



Tritanopia

82.3842, 6.9549, -0.3790

Trichromacy



Original Color

82.3931, 3.1559, 5.5261

Protanomaly

82.5418, -0.9349, 5.1483

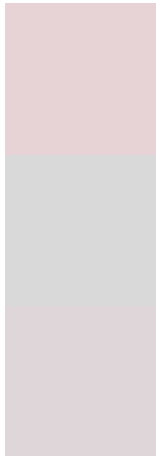
Deuteranomaly

82.3999, 4.7144, 5.5614

Tritanomaly

82.4483, 5.3822, 1.7061

Monochromacy



Original Color

82.3931, 3.1559, 5.5261

Achromatopsia

83.2990, -4.4446, 4.5258

Achromatomaly

82.8134, -1.4451, 4.4919

CSS Examples

Text

The CSS property to change the color of the text to HunterLab 82.3931, 3.1559, 5.5261 is called "color". The color property can be set on classes, ids or directly on the HTML element.

This example shows how text in the color `rgb(231, 210, 213)` looks like.

```
.text, #text, p{  
    color:rgb(231, 210, 213)  
}
```

If you want to add a text shadow in that color use the text-shadow property, you can generate a text shadow directly with our [CSS Text Shadow Generator](#).

Here you see how black text with a 4 pixel rgb(231, 210, 213) colored shadow looks like.

```
.shadow{ text-shadow: 4px 4px 2px rgb(231, 210, 213) }
```

Border

The CSS property to change the border of an element to HunterLab 82.3931, 3.1559, 5.5261 is called "border".

The border property can be set on classes, ids or directly on the HTML element.

This example shows the color as border, it can be applied via the CSS property "border" or "border-color".

```
.border, #border, table{ border:4px solid rgb(231, 210, 213) }
```


If only the border color should be changed use the property `border-color`.

```
.border{ border-color:rgb(231, 210, 213) }
```

If you want to add a box shadow in that color use:

Here you see how a box with a 4 pixel `rgb(231, 210, 213)` colored shadow looks like.

```
.boxshadow{ -moz-box-shadow:4px 4px 4px  
4px rgb(231, 210, 213); -webkit-box-  
shadow:4px 4px 4px 4px rgb(231, 210, 213);  
box-shadow:4px 4px 4px 4px rgb(231, 210,  
213) }
```

Background

The CSS property to change the background color of an element to HunterLab 82.3931, 3.1559, 5.5261 is called "background". The background property can be set on classes, ids or directly on the HTML element.

```
.background, #background, body{  
background: rgb(231, 210, 213) }
```

If only the background color should be changed can be used:

```
.background{ background-color: rgb(231,  
210, 213) }
```

This example shows the color as background, it is applied via the CSS property "background".

To optimize and compress your CSS code, you can use our [online CSS compressor and optimizer](#) based on csstidy. If you want to create a linear or radial gradient as background or border, check our [CSS Gradient Generator](#).

Hey! You found this booklet interesting? Support Converting Colors with the new Membership Option!

The pro membership hides all ads, plus gives you double the colors in the color bucket, and more awesome pro features!

[Learn more, Memberships starting at \\$2.50/m!](#)

**Follow me
on Twitter!**

@ConvertingColor