

Converting Colors

HunterLab(82.4561, 0.7171,
14.7225)

Have a look what the booklet for
HunterLab(82.4561, 0.7171,
14.7225) contains.

HunterLab(82.5233, 0.8981, 14.6182)	3
<i>Conversions</i>	4
<i>Details</i>	6
<i>Harmonies</i>	12
<i>Previews</i>	24
<i>Color Blindness Simulation</i>	28
<i>CSS Examples</i>	31

Color

**HunterLab(82.5233, 0.8981,
14.6182)**

Conversions

Conversions Part 1

Format	Color
Hex	EBD3C1
RGB	235, 211, 193
RGB Percent	92%, 83%, 76%
CMY	0.0784, 0.1725, 0.2431
CMYK	0.00, 0.10, 0.18, 0.08
HSL	26°, 51%, 84%
HSV	26°, 18%, 92%
XYZ	67.1808, 68.1010, 60.0561
YIQ	216.1240, 20.0820, -0.5100

Conversions

Conversions Part 2

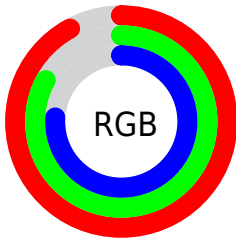
Format	Color
R _Y B	235, 225, 193
Decimal	15455169
CIE Lab	86.06, 5.49, 11.94
CIE LCh	86, 13.142, 65.328
Yxy	68.1040, 0.3439, 0.3486
Android (android.graphics.Color)	4293645249 (0xFFEBD3C1)
YUV	216.1240, -11.4001, 16.5543
Hunter-Lab	82.5233, 0.8981, 14.6182

Details

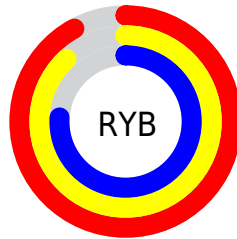
The HunterLab color $82.5233, 0.8981, 14.6182$ is a light color, and the websafe version is hex FFCCCC . A complement of this color would be $81.8290, -8.3910, -6.6731$, and the grayscale version is $82.9632, -4.4267, 4.5075$.

A 20% lighter version of the original color is $99.8096, -6.3799, 8.1519$, and $59.6337, 1.3264, 12.4839$ is the 20% darker color. If you saturate the color by 10%, you get $77.9372, 4.6194, 19.3620$, and if you desaturate by 10%, it is $87.2868, -2.4607, 9.3830$.

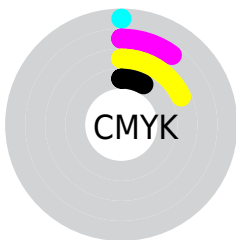
Distribution



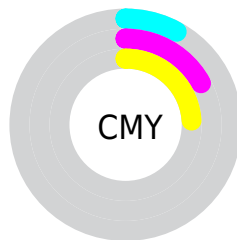
- Red (92%)
- Green (83%)
- Blue (76%)



- Red (92%)
- Yellow (88%)
- Blue (76%)



- Cyan (0%)
- Magenta (10%)
- Yellow (18%)
- Black (8%)



- Cyan (8%)
- Magenta (17%)
- Yellow (24%)

Brightness & Saturation Gradients

These gradients show how the HunterLab color 82.5233, 0.8981, 14.6182 changes by changing the brightness by 10 percent. The first figure shows a shift by +10% for each color and the second figure -10%.

Similar to the brightness gradients but the following saturation gradients show a change of the HunterLab color 82.5233, 0.8981, 14.6182 by changing the saturation by 10% instead.

82.5233, 0.8981,
14.6182

82.5233, 0.8981,
14.6182

213.0409, -4.1458,
25.9460

70.6982, 1.2676,
13.3944

107.9356, 0.0230,
17.0770

59.4974, 1.5920,
12.1669

121.4681, -0.4721,
18.3145

48.9599, 1.8643,
10.9313

135.5232, -1.0034,
19.5602

39.1304, 2.0787,
9.6793

150.0821, -1.5691,
20.8153

30.0642, 2.2272,
8.3983

165.1279, -2.1675,
22.0808

21.8320, 2.2991,
7.0678

180.6454, -2.7973,

14.5287, 2.2777,

23.3574

5.6512

196.6207, -3.4571,
24.6456

■ 8.1897, 2.4813,
5.7328

0.0000, NaN, NaN

■ 82.5233, 0.8981,
14.6182

■ 82.5233, 0.8981,
14.6182

■ 77.9372, 4.6194,
19.3620

■ 87.2868, -2.4607,
9.3830

■ 73.5408, 8.7379,
23.5436

■ 92.2063, -5.4789,
3.7114

■ 69.3563, 13.2724,
27.0897

■ 96.9815, -9.7786,
1.7496

■ 65.4059, 18.2331,
29.9211

■ 98.1847, -11.7095,
3.1659

■ 61.7138, 23.6122,
31.9592

■ 58.3055, 29.3742,
33.1380

■ 55.2056, 35.4437,
33.4240

■ 52.4338, 41.6840,
32.8768

■ 51.8838, 42.9987,
32.7233

Harmonies

Analogous

The Analogous color harmony consists of three colors that are next to each other on the color wheel.



82.5251, 6.0810, 11.1006



82.5233, 0.8981, 14.6182



82.5251, -5.5697, 15.5151

Triad

The Triadic color harmony groups three colors that are evenly spaced from another and form a triangle on the color wheel.



82.5251, 0.8956, 14.6194



82.5251, -16.5335, 3.3759



82.5251, 2.9743, -5.8518

Complementary

The Complementary color scheme is a pair of colors which are on the opposite of each other on the color wheel.



82.5233, 0.8981, 14.6182



81.8290, -8.3910, -6.6731

Split Complementary

Split-complementary colors differ from the complementary color scheme. The scheme consists of three colors, the original color and two neighbors of the complement color.



82.5251, -3.2393, -8.2985



82.5233, 0.8981, 14.6182



82.5251, -14.3975, -2.7127

Square

The Square scheme is like the rectangle color scheme, but the four colors are evenly spaced on the color wheel.



82.5251, 0.8956, 14.6194



82.5251, -15.5035, 9.3209



82.5251, -9.5805, -7.1076



82.5251, 7.3070, -0.6474

Rectangle

The Rectangle color scheme consists of four colors that form a rectangle on the color wheel.



82.5233, 0.8981, 14.6182



82.5251, -9.7075, 14.5692



82.5251, -9.5805, -7.1076



82.5251, 1.0292, -7.0417

Sweetspot

The Sweet Spot groups the original color and five complimentary colors.



82.5251, 0.8956, 14.6194



97.2861, -3.6797, 8.5672



77.9992, 14.3609, -1.8456



44.8341, -1.5914, 4.1631

0.0000, NaN, NaN



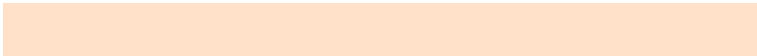
46.2646, -2.4686, 2.5136

Same Dimension

The Same Dimension uses a secret algorithm to generate beautiful new colors.



82.5251, 0.8956, 14.6194



88.8977, 2.2531, 17.7780



88.8511, -9.6309, 20.9139



40.1445, -0.9045, 4.7551



39.0175, 31.2900, 24.5902



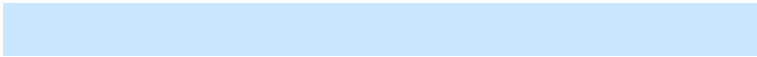
11.7597, 6.7850, 7.3651

Inverse Universe

The Inverse Universe completely reimagines the original color for something new.



81.8290, -8.3910, -6.6731



87.9989, -9.7204, -9.6884



75.5264, 2.1686, -15.1241



39.9721, -3.2098, -0.5261



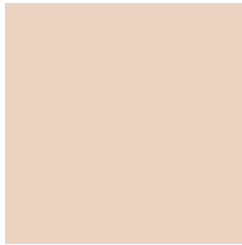
36.2298, 1.8272, -49.2286



11.0501, -1.0066, -11.6387

Previews

White Background



This preview shows how the HunterLab color 82.5233, 0.8981, 14.6182 looks on a white background.

Color Contrast Check

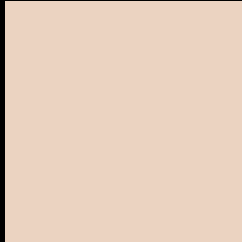
Large Text (above 18pt) WCAG AA × Fail

Any Text WCAG AA × Fail

Large Text (above 18pt) WCAG AAA × Fail

Any Text WCAG AAA × Fail

Black Background



This preview shows how the HunterLab color 82.5233, 0.8981, 14.6182 looks on a black background.

Color Contrast Check

Large Text (above 18pt) WCAG AA ✓ Pass

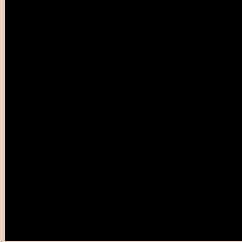
Any Text WCAG AA ✓ Pass

Large Text (above 18pt) WCAG AAA ✓ Pass

Any Text WCAG AAA ✓ Pass

If you want to check with other color combinations, try the [Color Contrast Checker](#).

HunterLab 82.5233, 0.8981, 14.6182 Background



This preview shows how black text looks on a background with the HunterLab color 82.5233, 0.8981, 14.6182.

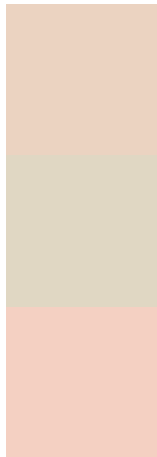


This preview shows how white text looks on a background with the HunterLab color 82.5233, 0.8981,

Color Blindness Simulation

Color vision deficiency is a very complex topic, and I could not describe the different causes any better than Wikipedia does, so if you want to learn more, you should check out their [article about color blindness](#).

Dichromacy



Original Color

82.5233, 0.8981, 14.6182

Protanopia

82.6972, -4.6539, 13.8601

Deuteranopia

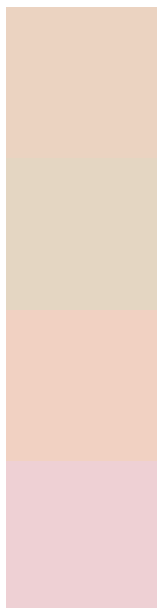
82.6074, 5.8339, 14.3722



Tritanopia

82.6463, 9.2092, 1.0047

Trichromacy



Original Color

82.5233, 0.8981, 14.6182

Protanomaly

82.7539, -2.9341, 14.3738

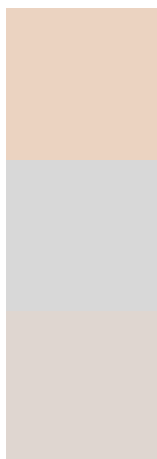
Deuteranomaly

82.5813, 4.2239, 14.3163

Tritanomaly

82.4878, 6.4729, 6.1714

Monochromacy



Original Color

82.5233, 0.8981, 14.6182

Achromatopsia

82.8665, -4.4215, 4.5023

Achromatomaly

82.6651, -2.4446, 8.0946

CSS Examples

Text

The CSS property to change the color of the text to HunterLab 82.5233, 0.8981, 14.6182 is called "color". The color property can be set on classes, ids or directly on the HTML element.

This example shows how text in the color `rgb(235, 211, 193)` looks like.

```
.text, #text, p{  
    color:rgb(235, 211, 193)  
}
```

If you want to add a text shadow in that color use the text-shadow property, you can generate a text shadow directly with our [CSS Text Shadow Generator](#).

Here you see how black text with a 4 pixel rgb(235, 211, 193) colored shadow looks like.

```
.shadow{ text-shadow: 4px 4px 2px rgb(235, 211, 193) }
```

Border

The CSS property to change the border of an element to HunterLab 82.5233, 0.8981, 14.6182 is called "border". The border property can be set on classes, ids or directly on the HTML element.

This example shows the color as border, it can be applied via the CSS property "border" or "border-color".

```
.border, #border, table{ border:4px solid rgb(235, 211, 193) }
```


If only the border color should be changed use the property border-color.

```
.border{ border-color:rgb(235, 211, 193) }
```

If you want to add a box shadow in that color use:

Here you see how a box with a 4 pixel rgb(235, 211, 193) colored shadow looks like.

```
.boxshadow{ -moz-box-shadow:4px 4px 4px  
4px rgb(235, 211, 193); -webkit-box-  
shadow:4px 4px 4px 4px rgb(235, 211, 193);  
box-shadow:4px 4px 4px 4px rgb(235, 211,  
193) }
```

Background

The CSS property to change the background color of an element to HunterLab 82.5233, 0.8981, 14.6182 is called "background". The background property can be set on classes, ids or directly on the HTML element.

```
.background, #background, body{  
background: rgb(235, 211, 193) }
```

If only the background color should be changed can be used:

```
.background{ background-color: rgb(235,  
211, 193) }
```

This example shows the color as background, it is applied via the CSS property "background".

To optimize and compress your CSS code, you can use our [online CSS compressor and optimizer](#) based on csstidy. If you want to create a linear or radial gradient as background or border, check our [CSS Gradient Generator](#).

Hey! You found this booklet interesting? Support Converting Colors with the new Membership Option!

The pro membership hides all ads, plus gives you double the colors in the color bucket, and more awesome pro features!

[Learn more, Memberships starting at \\$2.50/m!](#)

**Follow me
on Twitter!**

@ConvertingColor