

Converting Colors

HunterLab(82.4592, 4.2019,
11.1525)

Have a look what the booklet for
HunterLab(82.4592, 4.2019,
11.1525) contains.

HunterLab(82.4592, 4.2019, 11.1525)	3
<i>Conversions</i>	4
<i>Details</i>	6
<i>Harmonies</i>	12
<i>Previews</i>	24
<i>Color Blindness Simulation</i>	28
<i>CSS Examples</i>	31

Color

**HunterLab(82.4592, 4.2019,
11.1525)**

Conversions

Conversions Part 1

Format	Color
Hex	EED1C9
RGB	238, 209, 201
RGB Percent	93%, 82%, 79%
CMY	0.0667, 0.1804, 0.2118
CMYK	0.00, 0.12, 0.16, 0.07
HSL	13°, 52%, 86%
HSV	13°, 16%, 93%
XYZ	68.6031, 67.9952, 64.7670
YIQ	216.7590, 19.8520, 3.6600

Conversions

Conversions Part 2

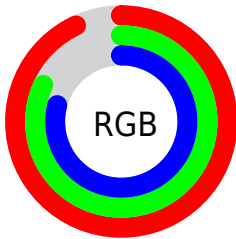
Format	Color
R _Y B	238, 211, 201
Decimal	15651273
CIE Lab	86.01, 8.83, 7.67
CIE LCh	86, 11.699, 40.963
Yxy	67.9982, 0.3407, 0.3377
Android (android.graphics.Color)	4293841353 (0xFFEED1C9)
YUV	216.7590, -7.7692, 18.6284
Hunter-Lab	82.4592, 4.2019, 11.1525

Details

The HunterLab color $82.4592, 4.2019, 11.1525$ is a light color, and the websafe version is hex `FFCCCC`. A complement of this color would be $86.7079, -12.1294, -2.0948$, and the grayscale version is $83.2228, -4.4406, 4.5217$.

A 20% lighter version of the original color is $100.0000, -5.3358, 5.4332$, and $59.5771, 4.4367, 9.3181$ is the 20% darker color. If you saturate the color by 10%, you get $76.3809, 10.5398, 14.8805$, and if you desaturate by 10%, it is $88.8263, -1.7705, 7.2504$.

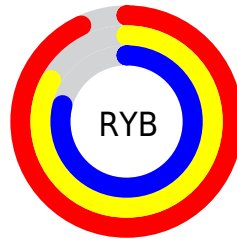
Distribution



Red (93%)

Green (82%)

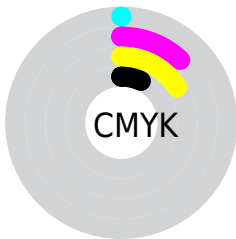
Blue (79%)



Red (93%)

Yellow (83%)

Blue (79%)

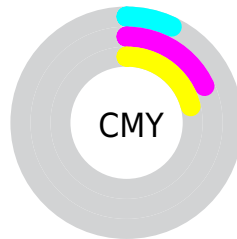


Cyan (0%)

Magenta (12%)

Yellow (16%)

Black (7%)



Cyan (7%)

Magenta (18%)

Yellow (21%)

Brightness & Saturation Gradients

These gradients show how the HunterLab color 82.4592, 4.2019, 11.1525 changes by changing the brightness by 10 percent. The first figure shows a shift by +10% for each color and the second figure -10%.

Similar to the brightness gradients but the following saturation gradients show a change of the HunterLab color 82.4592, 4.2019, 11.1525 by changing the saturation by 10% instead.

82.4592, 4.2019,
11.1525

82.4592, 4.2019,
11.1525

212.9530, 0.3199,
20.9271

70.6373, 4.4160,
10.1447

107.8655, 3.6175,
13.2138

59.4399, 4.5771,
9.1474

121.3952, 3.2593,
14.2666

48.9060, 4.6768,
8.1595

135.4475, 2.8601,
15.3354

39.0804, 4.7074,
7.1770

150.0038, 2.4221,
16.4205

30.0184, 4.6586,
6.1936

165.0471, 1.9475,
17.5221

21.7908, 4.5161,
5.1988

180.5622, 1.4379,

14.4928, 4.2587,

18.6404

4.1729

196.5351, 0.8949,
19.7754

■ 8.1539, 4.2859,
4.3428

0.0000, NaN, NaN

■ 82.4592, 4.2019,
11.1525

■ 82.4592, 4.2019,
11.1525

■ 76.3809, 10.5398,
14.8805

■ 88.8263, -1.7705,
7.2504

■ 70.6277, 17.2735,
18.3775

■ 95.4418, -7.4035,
3.2083

■ 65.2517, 24.4000,
21.5726

■ 98.4466, -10.7825,
3.4955

■ 60.3116, 31.8760,
24.3703

■ 55.8745, 39.5893,
26.6518

■ 52.0119, 47.3290,
28.2843

■ 48.7930, 54.7656,
29.1488

■ 46.2719, 61.4615,
29.1982

■ 45.3738, 64.0506,
29.0804

Harmonies

Analogous

The Analogous color harmony consists of three colors that are next to each other on the color wheel.



82.4610, 6.8485, 6.4835



82.4592, 4.2019, 11.1525



82.4610, -0.7300, 13.9129

Triad

The Triadic color harmony groups three colors that are evenly spaced from another and form a triangle on the color wheel.



82.4610, 4.1994, 11.1538



82.4610, -14.6980, 7.8791



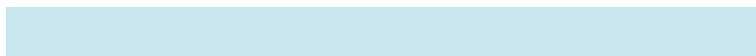
82.4610, -2.2697, -6.6371

Complementary

The Complementary color scheme is a pair of colors which are on the opposite of each other on the color wheel.



82.4592, 4.2019, 11.1525



86.7079, -12.1294, -2.0948

Split Complementary

Split-complementary colors differ from the complementary color scheme. The scheme consists of three colors, the original color and two neighbors of the complement color.



82.4610, -8.0155, -6.1987



82.4592, 4.2019, 11.1525



82.4610, -15.0844, 2.4426

Square

The Square scheme is like the rectangle color scheme, but the four colors are evenly spaced on the color wheel.



82.4610, 4.1994, 11.1538



82.4610, -11.5986, 12.1146



82.4610, -12.6692, -2.7841



82.4610, 3.0454, -3.9434

Rectangle

The Rectangle color scheme consists of four colors that form a rectangle on the color wheel.



82.4592, 4.2019, 11.1525



82.4610, -4.5920, 14.4198



82.4610, -12.6692, -2.7841



82.4610, -4.2165, -6.8557

Sweetspot

The Sweet Spot groups the original color and five complimentary colors.



82.4610, 4.1994, 11.1538



96.4343, -2.2447, 7.6141



81.0545, 13.4436, -4.9044



44.3855, -0.8342, 3.6631

0.0000, NaN, NaN



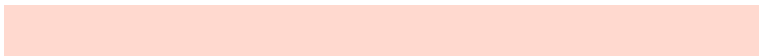
46.2646, -2.4686, 2.5136

Same Dimension

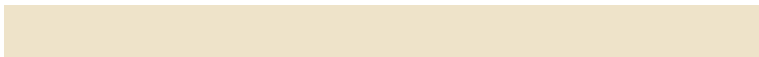
The Same Dimension uses a secret algorithm to generate beautiful new colors.



82.4610, 4.1994, 11.1538



86.8245, 6.9112, 13.5076



87.9082, -5.1133, 16.8092



40.3895, 0.2508, 4.1210



34.1170, 47.1367, 21.8480



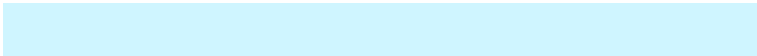
10.5352, 11.5464, 6.6939

Inverse Universe

The Inverse Universe completely reimagines the original color for something new.



86.7079, -12.1294, -2.0948



92.4308, -14.6689, -3.9878



81.0731, -2.9730, -9.2509



41.6110, -4.4395, 0.3119



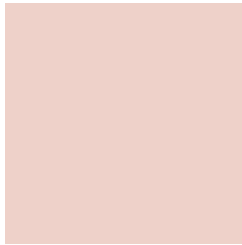
48.3264, -15.9986, -25.8674



14.4401, -5.2992, -6.6094

Previews

White Background



This preview shows how the HunterLab color 82.4592, 4.2019, 11.1525 looks on a white background.

Color Contrast Check

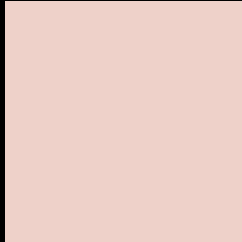
Large Text (above 18pt) WCAG AA × Fail

Any Text WCAG AA × Fail

Large Text (above 18pt) WCAG AAA × Fail

Any Text WCAG AAA × Fail

Black Background



This preview shows how the HunterLab color 82.4592, 4.2019, 11.1525 looks on a black background.

Color Contrast Check

Large Text (above 18pt) WCAG AA ✓ Pass

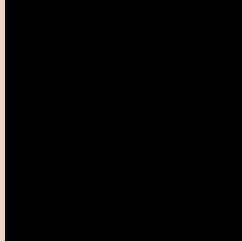
Any Text WCAG AA ✓ Pass

Large Text (above 18pt) WCAG AAA ✓ Pass

Any Text WCAG AAA ✓ Pass

If you want to check with other color combinations, try the [Color Contrast Checker](#).

HunterLab 82.4592, 4.2019, 11.1525 Background



This preview shows how black text looks on a background with the HunterLab color 82.4592, 4.2019, 11.1525.

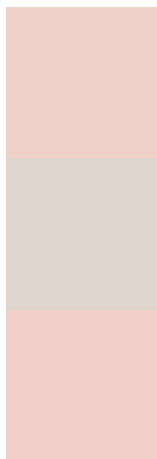


This preview shows how white text looks on a background with the HunterLab color 82.4592, 4.2019,

Color Blindness Simulation

Color vision deficiency is a very complex topic, and I could not describe the different causes any better than Wikipedia does, so if you want to learn more, you should check out their [article about color blindness](#).

Dichromacy



Original Color

82.4592, 4.2019, 11.1525

Protanopia

82.4514, -3.4195, 9.6670

Deuteranopia

82.4800, 5.7966, 11.2034



Tritanopia

82.5332, 10.2733, 1.3913

Trichromacy



Original Color

82.4592, 4.2019, 11.1525

Protanomaly

82.3971, -0.5278, 10.1081

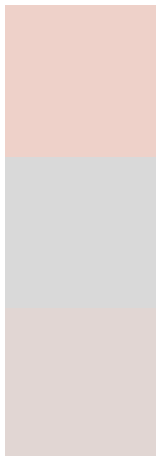
Deuteranomaly

82.3736, 5.4392, 11.0802

Tritanomaly

82.4657, 8.0371, 5.2163

Monochromacy



Original Color

82.4592, 4.2019, 11.1525

Achromatopsia

83.2990, -4.4446, 4.5258

Achromatomaly

82.9481, -1.2889, 7.0389

CSS Examples

Text

The CSS property to change the color of the text to HunterLab 82.4592, 4.2019, 11.1525 is called "color". The color property can be set on classes, ids or directly on the HTML element.

This example shows how text in the color `rgb(238, 209, 201)` looks like.

```
.text, #text, p{  
    color:rgb(238, 209, 201)  
}
```

If you want to add a text shadow in that color use the text-shadow property, you can generate a text shadow directly with our [CSS Text Shadow Generator](#).

Here you see how black text with a 4 pixel rgb(238, 209, 201) colored shadow looks like.

```
.shadow{ text-shadow: 4px 4px 2px rgb(238, 209, 201) }
```

Border

The CSS property to change the border of an element to HunterLab 82.4592, 4.2019, 11.1525 is called "border". The border property can be set on classes, ids or directly on the HTML element.

This example shows the color as border, it can be applied via the CSS property "border" or "border-color".

```
.border, #border, table{ border:4px solid rgb(238, 209, 201) }
```


If only the border color should be changed use the property border-color.

```
.border{ border-color:rgb(238, 209, 201) }
```

If you want to add a box shadow in that color use:

Here you see how a box with a 4 pixel rgb(238, 209, 201) colored shadow looks like.

```
.boxshadow{ -moz-box-shadow:4px 4px 4px  
4px rgb(238, 209, 201); -webkit-box-  
shadow:4px 4px 4px 4px rgb(238, 209, 201);  
box-shadow:4px 4px 4px 4px rgb(238, 209,  
201) }
```

Background

The CSS property to change the background color of an element to HunterLab 82.4592, 4.2019, 11.1525 is called "background". The background property can be set on classes, ids or directly on the HTML element.

```
.background, #background, body{  
background: rgb(238, 209, 201) }
```

If only the background color should be changed can be used:

```
.background{ background-color: rgb(238,  
209, 201) }
```

This example shows the color as background, it is applied via the CSS property "background".

To optimize and compress your CSS code, you can use our [online CSS compressor and optimizer](#) based on csstidy. If you want to create a linear or radial gradient as background or border, check our [CSS Gradient Generator](#).

Hey! You found this booklet interesting? Support Converting Colors with the new Membership Option!

The pro membership hides all ads, plus gives you double the colors in the color bucket, and more awesome pro features!

[Learn more, Memberships starting at \\$2.50/m!](#)

**Follow me
on Twitter!**

@ConvertingColor