

Converting Colors

HunterLab(82.5392, 5.0795,
6.6874)

Have a look what the booklet for
HunterLab(82.5392, 5.0795, 6.6874)
contains.

HunterLab(82.5451, 5.0806, 6.6871)	3
<i>Conversions</i>	4
<i>Details</i>	6
<i>Harmonies</i>	12
<i>Previews</i>	24
<i>Color Blindness Simulation</i>	28
<i>CSS Examples</i>	31

Color

**HunterLab(82.5451, 5.0806,
6.6871)**

Conversions

Conversions Part 1

Format	Color
Hex	ECD1D3
RGB	236, 209, 211
RGB Percent	93%, 82%, 83%
CMY	0.0745, 0.1804, 0.1725
CMYK	0.00, 0.11, 0.11, 0.07
HSL	356°, 42%, 87%
HSV	356°, 11%, 93%
XYZ	69.1504, 68.1369, 71.1351
YIQ	217.3010, 15.4500, 6.3460

Conversions

Conversions Part 2

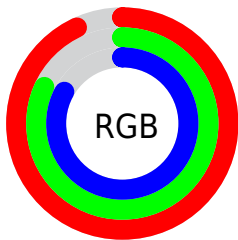
Format	Color
R _Y B	236, 209, 211
Decimal	15520211
CIE Lab	86.08, 9.72, 2.45
CIE LCh	86, 10.023, 14.152
Yxy	68.1400, 0.3318, 0.3269
Android (android.graphics.Color)	4293710291 (0xFFECD1D3)
YUV	217.3010, -3.1064, 16.3990
Hunter-Lab	82.5451, 5.0806, 6.6871

Details

The HunterLab color $82.5451, 5.0806, 6.6871$ is a light color, and the websafe version is hex FFCCCC . A complement of this color would be $89.1563, -13.5862, 2.9314$, and the grayscale version is $83.4391, -4.4521, 4.5334$.

A 20% lighter version of the original color is $100.0000, -5.3358, 5.4332$, and $59.6492, 5.2275, 5.1409$ is the 20% darker color. If you saturate the color by 10%, you get $75.0875, 14.1484, 8.4355$, and if you desaturate by 10%, it is $90.4228, -3.6567, 5.1762$.

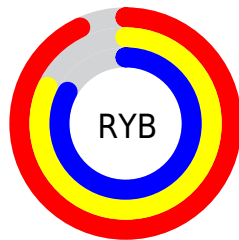
Distribution



Red (93%)

Green (82%)

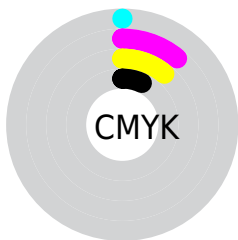
Blue (83%)



Red (93%)

Yellow (82%)

Blue (83%)

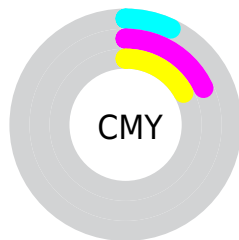


Cyan (0%)

Magenta (11%)

Yellow (11%)

Black (7%)



Cyan (7%)

Magenta (18%)

Yellow (17%)

Brightness & Saturation Gradients

These gradients show how the HunterLab color 82.5451, 5.0806, 6.6871 changes by changing the brightness by 10 percent. The first figure shows a shift by +10% for each color and the second figure -10%.

Similar to the brightness gradients but the following saturation gradients show a change of the HunterLab color 82.5451, 5.0806, 6.6871 by changing the saturation by 10% instead.

82.5451, 5.0806,
6.6871

82.5451, 5.0806,
6.6871

213.0708, 1.5004,
14.6291

70.7189, 5.2548,
5.9312

107.9594, 4.5716,
8.2827

59.5169, 5.3738,
5.2014

121.4929, 4.2489,
9.1182

48.9782, 5.4290,
4.4999

135.5489, 3.8839,
9.9784

39.1474, 5.4125,
3.8274

150.1086, 3.4791,
10.8626

30.0797, 5.3134,
3.1843

165.1553, 3.0366,
11.7703

21.8459, 5.1166,
2.5706

180.6737, 2.5583,

14.5409, 4.8001,

12.7010

1.9849

196.6498, 2.0457,
13.6541

■ 8.2018, 4.7358,
1.6850

0.0000, NaN, NaN

■ 82.5451, 5.0806,
6.6871

■ 82.5451, 5.0806,
6.6871

■ 75.0875, 14.1484,
8.4355

■ 90.4228, -3.6567,
5.1762

■ 68.1219, 23.5417,
10.4465

■ 98.2622, -11.4538,
3.4097

■ 61.7469, 33.1742,
12.7375

■ 98.2716, -11.4016,
3.2754

■ 56.0797, 42.8337,
15.2925

■ 51.2542, 52.1132,
18.0365

■ 47.4056, 60.3762,
20.8078

■ 44.6380, 66.8407,
23.3566

■ 42.9755, 70.8601,
25.4016

■ 42.2787, 72.5027,
26.5516

Harmonies

Analogous

The Analogous color harmony consists of three colors that are next to each other on the color wheel.



82.5469, 5.0016, 1.9680



82.5451, 5.0806, 6.6871



82.5469, 2.5711, 10.5870

Triad

The Triadic color harmony groups three colors that are evenly spaced from another and form a triangle on the color wheel.



82.5469, 5.0782, 6.6885



82.5469, -10.9706, 10.7625



82.5469, -7.0064, -4.7540

Complementary

The Complementary color scheme is a pair of colors which are on the opposite of each other on the color wheel.



82.5451, 5.0806, 6.6871



89.1563, -13.5862, 2.9314

Split Complementary

Split-complementary colors differ from the complementary color scheme. The scheme consists of three colors, the original color and two neighbors of the complement color.



82.5469, -11.1645, -2.1037



82.5451, 5.0806, 6.6871



82.5469, -13.4159, 6.9411

Square

The Square scheme is like the rectangle color scheme, but the four colors are evenly spaced on the color wheel.



82.5469, 5.0782, 6.6885



82.5469, -6.7360, 12.8431



82.5469, -13.4860, 2.2360



82.5469, -2.0558, -4.8317

Rectangle

The Rectangle color scheme consists of four colors that form a rectangle on the color wheel.



82.5451, 5.0806, 6.6871



82.5469, -0.1945, 12.2743



82.5469, -13.4860, 2.2360



82.5469, -8.5405, -4.1277

Sweetspot

The Sweet Spot groups the original color and five complimentary colors.



82.5469, 5.0782, 6.6885



97.3488, -2.5150, 5.8961



83.1326, 8.6687, -5.2200



44.7130, -0.8123, 2.7866

0.0000, NaN, NaN



46.2646, -2.4686, 2.5136

Same Dimension

The Same Dimension uses a secret algorithm to generate beautiful new colors.



82.5469, 5.0782, 6.6885



87.9491, 8.1038, 7.7765



85.8816, -1.1404, 11.2531



38.8228, 1.5360, 2.9425



31.4004, 53.8699, 19.5481



8.8349, 15.2282, 4.9477

Inverse Universe

The Inverse Universe completely reimagines the original color for something new.



82.5469, 5.0782, 6.6885



87.9491, 8.1038, 7.7765



85.6325, -7.4966, -2.3103



38.8228, 1.5360, 2.9425



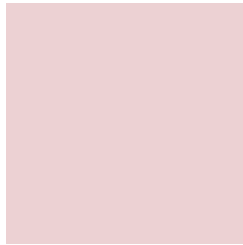
31.4004, 53.8699, 19.5481



8.8349, 15.2282, 4.9477

Previews

White Background



This preview shows how the HunterLab color 82.5451, 5.0806, 6.6871 looks on a white background.

Color Contrast Check

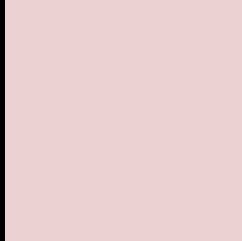
Large Text (above 18pt) WCAG AA × Fail

Any Text WCAG AA × Fail

Large Text (above 18pt) WCAG AAA × Fail

Any Text WCAG AAA × Fail

Black Background



This preview shows how the HunterLab color 82.5451, 5.0806, 6.6871 looks on a black background.

Color Contrast Check

Large Text (above 18pt) WCAG AA ✓ Pass

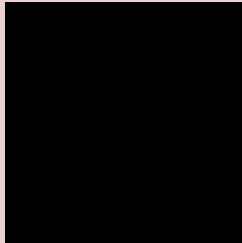
Any Text WCAG AA ✓ Pass

Large Text (above 18pt) WCAG AAA ✓ Pass

Any Text WCAG AAA ✓ Pass

If you want to check with other color combinations, try the [Color Contrast Checker](#).

HunterLab 82.5451, 5.0806, 6.6871 Background



This preview shows how black text looks on a background with the HunterLab color 82.5451, 5.0806, 6.6871.



This preview shows how white text looks on a background with the HunterLab color 82.5451, 5.0806,

6.6871.

Color Blindness Simulation

Color vision deficiency is a very complex topic, and I could not describe the different causes any better than Wikipedia does, so if you want to learn more, you should check out their [article about color blindness](#).

Dichromacy



Original Color

82.5451, 5.0806, 6.6871

Protanopia

82.4671, -2.7644, 5.0288

Deuteranopia

82.4573, 6.3098, 6.6073



Tritanopia

82.5412, 8.8608, 0.8701

Trichromacy



Original Color

82.5451, 5.0806, 6.6871

Protanomaly

82.4006, 0.0819, 5.4811

Deuteranomaly

82.3525, 5.9588, 6.4803

Tritanomaly

82.6019, 7.2916, 2.9225

Monochromacy



Original Color

82.5451, 5.0806, 6.6871

Achromatopsia

83.2990, -4.4446, 4.5258

Achromatomaly

82.9739, -0.9552, 5.1723

CSS Examples

Text

The CSS property to change the color of the text to HunterLab 82.5451, 5.0806, 6.6871 is called "color". The color property can be set on classes, ids or directly on the HTML element.

This example shows how text in the color `rgb(236, 209, 211)` looks like.

```
.text, #text, p{  
    color:rgb(236, 209, 211)  
}
```

If you want to add a text shadow in that color use the text-shadow property, you can generate a text shadow directly with our [CSS Text Shadow Generator](#).

Here you see how black text with a 4 pixel rgb(236, 209, 211) colored shadow looks like.

```
.shadow{ text-shadow: 4px 4px 2px rgb(236, 209, 211) }
```

Border

The CSS property to change the border of an element to HunterLab 82.5451, 5.0806, 6.6871 is called "border". The border property can be set on classes, ids or directly on the HTML element.

This example shows the color as border, it can be applied via the CSS property "border" or "border-color".

```
.border, #border, table{ border:4px solid rgb(236, 209, 211) }
```


If only the border color should be changed use the property `border-color`.

```
.border{ border-color:rgb(236, 209, 211) }
```

If you want to add a box shadow in that color use:

Here you see how a box with a 4 pixel `rgb(236, 209, 211)` colored shadow looks like.

```
.boxshadow{ -moz-box-shadow:4px 4px 4px  
4px rgb(236, 209, 211); -webkit-box-  
shadow:4px 4px 4px 4px rgb(236, 209, 211);  
box-shadow:4px 4px 4px 4px rgb(236, 209,  
211) }
```

Background

The CSS property to change the background color of an element to HunterLab 82.5451, 5.0806, 6.6871 is called "background". The background property can be set on classes, ids or directly on the HTML element.

```
.background, #background, body{  
background: rgb(236, 209, 211) }
```

If only the background color should be changed can be used:

```
.background{ background-color: rgb(236,  
209, 211) }
```

This example shows the color as background, it is applied via the CSS property "background".

To optimize and compress your CSS code, you can use our [online CSS compressor and optimizer](#) based on csstidy. If you want to create a linear or radial gradient as background or border, check our [CSS Gradient Generator](#).

Hey! You found this booklet interesting? Support Converting Colors with the new Membership Option!

The pro membership hides all ads, plus gives you double the colors in the color bucket, and more awesome pro features!

[Learn more, Memberships starting at \\$2.50/m!](#)

**Follow me
on Twitter!**

@ConvertingColor