

# Converting Colors

HunterLab(82.5634, 3.4786,  
7.0415)

Have a look what the booklet for  
HunterLab(82.5634, 3.4786, 7.0415)  
contains.

<b>HunterLab(82.5045, 3.3501, 7.0809)</b> .....	3
<i><b>Conversions</b></i> .....	4
<i><b>Details</b></i> .....	6
<i><b>Harmonies</b></i> .....	12
<i><b>Previews</b></i> .....	24
<i><b>Color Blindness Simulation</b></i> .....	28
<i><b>CSS Examples</b></i> .....	31

# Color

**HunterLab(82.5045, 3.3501,  
7.0809)**

# Conversions

## Conversions Part 1

Format	Color
Hex	E9D2D2
RGB	233, 210, 210
RGB Percent	91%, 82%, 82%
CMY	0.0863, 0.1764, 0.1765
CMYK	0.00, 0.10, 0.10, 0.09
HSL	0°, 34%, 87%
HSV	0°, 10%, 91%
XYZ	68.2837, 68.0699, 70.5125
YIQ	216.8770, 13.7080, 4.8760

# Conversions

## Conversions Part 2

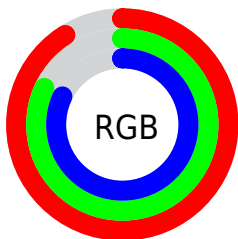
Format	Color
R <sub>Y</sub> B	233, 210, 210
Decimal	15323858
CIE Lab	86.04, 7.98, 2.90
CIE LCh	86, 8.488, 19.983
Yxy	68.0729, 0.3301, 0.3291
Android (android.graphics.Color)	4293513938 (0xFFE9D2D2)
YUV	216.8770, -3.3904, 14.1399
Hunter-Lab	82.5045, 3.3501, 7.0809

# Details

The HunterLab color  $82.5045, 3.3501, 7.0809$  is a light color, and the websafe version is hex `CCCCCC`. A complement of this color would be  $88.2389, -11.9545, 2.3634$ , and the grayscale version is  $83.2573, -4.4424, 4.5235$ .

A 20% lighter version of the original color is  $100.0000, -5.3358, 5.4332$ , and  $59.6023, 3.5725, 5.5015$  is the 20% darker color. If you saturate the color by 10%, you get  $75.0443, 11.9854, 9.4401$ , and if you desaturate by 10%, it is  $90.3730, -4.9210, 4.8770$ .

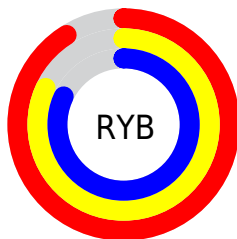
# Distribution



Red (91%)

Green (82%)

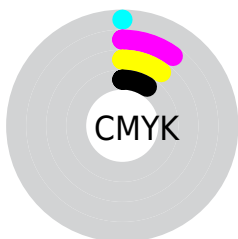
Blue (82%)



Red (91%)

Yellow (82%)

Blue (82%)

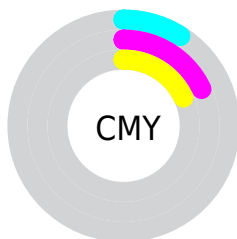


Cyan (0%)

Magenta (10%)

Yellow (10%)

Black (9%)



Cyan (9%)

Magenta (18%)

Yellow (18%)

# Brightness & Saturation Gradients

These gradients show how the HunterLab color 82.5045, 3.3501, 7.0809 changes by changing the brightness by 10 percent. The first figure shows a shift by +10% for each color and the second figure -10%.

Similar to the brightness gradients but the following saturation gradients show a change of the HunterLab color 82.5045, 3.3501, 7.0809 by changing the saturation by 10% instead.



82.5045, 3.3501,  
7.0809

82.5045, 3.3501,  
7.0809

213.0151, -0.8289,  
15.1774

70.6803, 3.6041,  
6.3039

107.9150, 2.6916,  
8.7156

59.4805, 3.8069,  
5.5517

121.4467, 2.2984,  
9.5694

48.9440, 3.9505,  
4.8264

135.5009, 1.8654,  
10.4472

39.1157, 4.0279,  
4.1281

150.0591, 1.3948,  
11.3484

30.0507, 4.0293,  
3.4569

165.1042, 0.8884,  
12.2725

21.8199, 3.9412,  
2.8119

180.6210, 0.3481,

14.5181, 3.7433,

13.2190

2.1903

196.5955, -0.2248,  
14.1875

■ 8.1792, 3.8127,  
1.9152

0.0000, NaN, NaN

■ 82.5045, 3.3501,  
7.0809

■ 82.5045, 3.3501,  
7.0809

■ 75.0443, 11.9854,  
9.4401

■ 90.3730, -4.9210,  
4.8770

■ 68.0618, 20.9978,  
11.9580

■ 98.0121, -12.3215,  
2.9483

■ 61.6530, 30.3288,  
14.6236

■ 55.9327, 39.8060,  
17.3875

■ 51.0337, 49.0711,  
20.1389

■ 47.0932, 57.5305,  
22.6889

■ 44.2222, 64.4093,  
24.7855

■ 42.4577, 68.9968,  
26.1936

■ 41.6316, 71.2510,  
26.8883

# Harmonies

## Analogous

The Analogous color harmony consists of three colors that are next to each other on the color wheel.



82.5063, 3.7258, 3.1390



82.5045, 3.3501, 7.0809



82.5063, 0.8688, 10.1793

# Triad

The Triadic color harmony groups three colors that are evenly spaced from another and form a triangle on the color wheel.



82.5063, 3.3478, 7.0822



82.5063, -10.5216, 9.2956



82.5063, -5.8115, -3.4664

# Complementary

The Complementary color scheme is a pair of colors which are on the opposite of each other on the color wheel.



82.5045, 3.3501, 7.0809



88.2389, -11.9545, 2.3634

# Split Complementary

Split-complementary colors differ from the complementary color scheme. The scheme consists of three colors, the original color and two neighbors of the complement color.



82.5063, -9.5530, -1.6335



82.5045, 3.3501, 7.0809



82.5063, -12.2360, 5.8206

# Square

The Square scheme is like the rectangle color scheme, but the four colors are evenly spaced on the color wheel.



82.5063, 3.3478, 7.0822



82.5063, -7.1579, 11.4120



82.5063, -11.8850, 1.8130



82.5063, -1.6191, -3.0869



# Rectangle

The Rectangle color scheme consists of four colors that form a rectangle on the color wheel.



82.5045, 3.3501, 7.0809



82.5063, -1.6146, 11.4107



82.5063, -11.8850, 1.8130



82.5063, -7.1622, -3.0852

# Sweetspot

The Sweet Spot groups the original color and five complimentary colors.



82.5063, 3.3478, 7.0822



97.3312, -2.6138, 6.1534



83.2472, 7.3280, -3.4811



44.7027, -0.8700, 2.9370

0.0000, NaN, NaN



46.2646, -2.4686, 2.5136

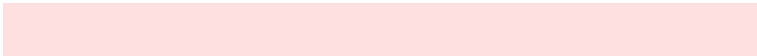


# Same Dimension

The Same Dimension uses a secret algorithm to generate beautiful new colors.



82.5063, 3.3478, 7.0822



89.5506, 5.7665, 8.4023



85.9971, -2.6532, 10.9067



38.8001, 1.4097, 3.2754



31.3537, 53.6882, 20.2599



8.7869, 15.0416, 5.6777



# Inverse Universe

The Inverse Universe completely reimagines the original color for something new.



88.2389, -11.9545, 2.3634



97.2871, -14.8967, 2.0299



84.5949, -6.0854, -2.0106



41.3780, -5.4709, 1.1535



60.3265, -31.9749, -6.3782



16.9052, -8.9606, -1.7867



# Previews

## White Background



This preview shows how the HunterLab color 82.5045, 3.3501, 7.0809 looks on a white background.

## Color Contrast Check

Large Text (above 18pt) WCAG AA × Fail

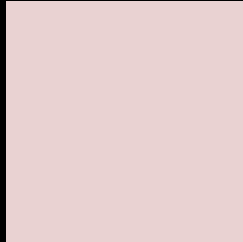
Any Text WCAG AA × Fail

Large Text (above 18pt) WCAG AAA × Fail

Any Text WCAG AAA × Fail



# Black Background



This preview shows how the HunterLab color 82.5045, 3.3501, 7.0809 looks on a black background.

## Color Contrast Check

Large Text (above 18pt) WCAG AA ✓ Pass

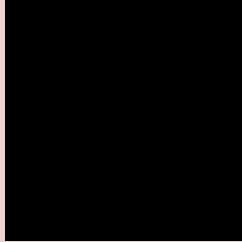
Any Text WCAG AA ✓ Pass

Large Text (above 18pt) WCAG AAA ✓ Pass

Any Text WCAG AAA ✓ Pass

If you want to check with other color combinations, try the [Color Contrast Checker](#).

## HunterLab 82.5045, 3.3501, 7.0809 Background



This preview shows how black text looks on a background with the HunterLab color 82.5045, 3.3501, 7.0809.



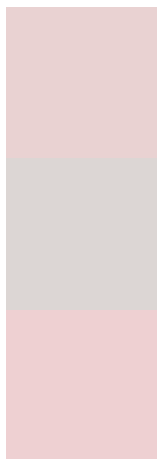
This preview shows how white text looks on a background with the HunterLab color 82.5045, 3.3501,



# Color Blindness Simulation

Color vision deficiency is a very complex topic, and I could not describe the different causes any better than Wikipedia does, so if you want to learn more, you should check out their [article about color blindness](#).

## Dichromacy



### Original Color

82.5045, 3.3501, 7.0809

### Protanopia

82.4998, -2.7743, 6.0235

### Deuteranopia

82.4270, 6.1475, 7.0408



## Tritanopia

82.5565, 7.4638, 0.3552

# Trichromacy



## Original Color

82.5045, 3.3501, 7.0809

## Protanomaly

82.6433, -0.7701, 6.6978

## Deuteranomaly

82.5148, 4.9181, 7.1201

## Tritanomaly

82.5880, 5.7230, 2.8784

# Monochromacy



## Original Color

82.5045, 3.3501, 7.0809

## Achromatopsia

83.2990, -4.4446, 4.5258

## Achromatomaly

82.8469, -1.4538, 5.4955

# CSS Examples

## Text

The CSS property to change the color of the text to HunterLab 82.5045, 3.3501, 7.0809 is called "color". The color property can be set on classes, ids or directly on the HTML element.

This example shows how text in the color `rgb(233, 210, 210)` looks like.

```
.text, #text, p{  
    color:rgb(233, 210, 210)  
}
```

If you want to add a text shadow in that color use the text-shadow property, you can generate a text shadow directly with our [CSS Text Shadow Generator](#).

Here you see how black text with a 4 pixel rgb(233, 210, 210) colored shadow looks like.

```
.shadow{ text-shadow: 4px 4px 2px rgb(233, 210, 210) }
```

## Border

The CSS property to change the border of an element to HunterLab 82.5045, 3.3501, 7.0809 is called "border". The border property can be set on classes, ids or directly on the HTML element.

This example shows the color as border, it can be applied via the CSS property "border" or "border-color".

```
.border, #border, table{ border:4px solid rgb(233, 210, 210) }
```



If only the border color should be changed use the property border-color.

```
.border{ border-color:rgb(233, 210, 210) }
```

If you want to add a box shadow in that color use:

Here you see how a box with a 4 pixel rgb(233, 210, 210) colored shadow looks like.

```
.boxshadow{ -moz-box-shadow:4px 4px 4px  
4px rgb(233, 210, 210); -webkit-box-  
shadow:4px 4px 4px 4px rgb(233, 210, 210);  
box-shadow:4px 4px 4px 4px rgb(233, 210,  
210) }
```

# Background

The CSS property to change the background color of an element to HunterLab 82.5045, 3.3501, 7.0809 is called "background". The background property can be set on classes, ids or directly on the HTML element.

```
.background, #background, body{  
background: rgb(233, 210, 210) }
```

If only the background color should be changed can be used:

```
.background{ background-color: rgb(233,  
210, 210) }
```

This example shows the color as background, it is applied via the CSS property "background".

To optimize and compress your CSS code, you can use our [online CSS compressor and optimizer](#) based on csstidy. If you want to create a linear or radial gradient as background or border, check our [CSS Gradient Generator](#).

Hey! You found this booklet interesting? Support Converting Colors with the new Membership Option!

The pro membership hides all ads, plus gives you double the colors in the color bucket, and more awesome pro features!

**[Learn more, Memberships starting at \\$2.50/m!](#)**

**Follow me  
on Twitter!**

@ConvertingColor