

Converting Colors

HunterLab(82.6068, 3.6959,
7.2041)

Have a look what the booklet for
HunterLab(82.6068, 3.6959, 7.2041)
contains.

HunterLab(82.6068, 3.6959, 7.2041)	3
<i>Conversions</i>	4
<i>Details</i>	6
<i>Harmonies</i>	12
<i>Previews</i>	24
<i>Color Blindness Simulation</i>	28
<i>CSS Examples</i>	31

Color

**HunterLab(82.6068, 3.6959,
7.2041)**

Conversions

Conversions Part 1

Format	Color
Hex	EAD2D2
RGB	234, 210, 210
RGB Percent	92%, 82%, 82%
CMY	0.0823, 0.1764, 0.1765
CMYK	0.00, 0.10, 0.10, 0.08
HSL	0°, 36%, 87%
HSV	0°, 10%, 92%
XYZ	68.6112, 68.2388, 70.5281
YIQ	217.1760, 14.3040, 5.0880

Conversions

Conversions Part 2

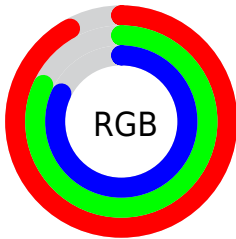
Format	Color
R _Y B	234, 210, 210
Decimal	15389394
CIE Lab	86.13, 8.33, 3.03
CIE LCh	86, 8.863, 20.013
Yxy	68.2418, 0.3308, 0.3291
Android (android.graphics.Color)	4293579474 (0xFFEAD2D2)
YUV	217.1760, -3.5378, 14.7546
Hunter-Lab	82.6068, 3.6959, 7.2041

Details

The HunterLab color $82.6068, 3.6959, 7.2041$ is a light color, and the websafe version is hex `CCCCCC`. A complement of this color would be $88.5926, -12.2809, 2.2796$, and the grayscale version is $83.3872, -4.4493, 4.5306$.

A 20% lighter version of the original color is $100.0000, -5.3358, 5.4332$, and $59.7011, 3.9047, 5.6200$ is the 20% darker color. If you saturate the color by 10%, you get $75.1256, 12.3902, 9.5815$, and if you desaturate by 10%, it is $90.5011, -4.6313, 4.9834$.

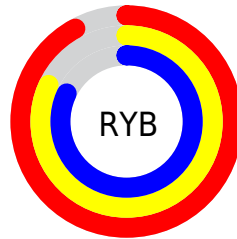
Distribution



Red (92%)

Green (82%)

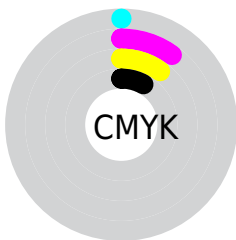
Blue (82%)



Red (92%)

Yellow (82%)

Blue (82%)

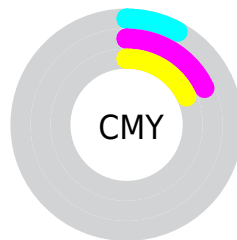


Cyan (0%)

Magenta (10%)

Yellow (10%)

Black (8%)



Cyan (8%)

Magenta (18%)

Yellow (18%)

Brightness & Saturation Gradients

These gradients show how the HunterLab color 82.6068, 3.6959, 7.2041 changes by changing the brightness by 10 percent. The first figure shows a shift by +10% for each color and the second figure -10%.

Similar to the brightness gradients but the following saturation gradients show a change of the HunterLab color 82.6068, 3.6959, 7.2041 by changing the saturation by 10% instead.

82.6068, 3.6959,
7.2041

82.6068, 3.6959,
7.2041

213.1554, -0.3647,
15.3483

70.7775, 3.9341,
6.4206

108.0269, 3.0669,
8.8508

59.5722, 4.1204,
5.6616

121.5630, 2.6876,
9.7103

49.0300, 4.2466,
4.9289

135.6216, 2.2681,
10.5935

39.1955, 4.3055,
4.2228

150.1839, 1.8105,
11.4999

30.1238, 4.2871,
3.5430

165.2331, 1.3168,
12.4290

21.8856, 4.1777,
2.8885

180.7538, 0.7887,

14.5755, 3.9566,

13.3805

2.2561

196.7322, 0.2278,
14.3537

■ 8.2360, 3.9664,
1.9749

0.0000, NaN, NaN

■ 82.6068, 3.6959,
7.2041

■ 82.6068, 3.6959,
7.2041

■ 75.1256, 12.3902,
9.5815

■ 90.5011, -4.6313,
4.9834

■ 68.1281, 21.4630,
12.1183

■ 98.0982, -12.0160,
3.0569

■ 61.7114, 30.8518,
14.8027

■ 55.9920, 40.3774,
17.5828

■ 51.1038, 49.6706,
20.3444

■ 47.1845, 58.1251,
22.8942

■ 44.3437, 64.9581,
24.9778

■ 42.6145, 69.4654,
26.3617

■ 41.8252, 71.6217,
27.0263

Harmonies

Analogous

The Analogous color harmony consists of three colors that are next to each other on the color wheel.



82.6086, 4.0915, 3.0878



82.6068, 3.6959, 7.2041



82.6086, 1.0985, 10.4319

Triad

The Triadic color harmony groups three colors that are evenly spaced from another and form a triangle on the color wheel.



82.6086, 3.6935, 7.2055



82.6086, -10.7989, 9.5060



82.6086, -5.8752, -3.8341

Complementary

The Complementary color scheme is a pair of colors which are on the opposite of each other on the color wheel.



82.6068, 3.6959, 7.2041



88.5926, -12.2809, 2.2796

Split Complementary

Split-complementary colors differ from the complementary color scheme. The scheme consists of three colors, the original color and two neighbors of the complement color.



82.6086, -9.7822, -1.9146



82.6068, 3.6959, 7.2041



82.6086, -12.5852, 5.8810

Square

The Square scheme is like the rectangle color scheme, but the four colors are evenly spaced on the color wheel.



82.6086, 3.6935, 7.2055



82.6086, -7.2895, 11.7111



82.6086, -12.2170, 1.6928



82.6086, -1.4950, -3.4336

Rectangle

The Rectangle color scheme consists of four colors that form a rectangle on the color wheel.



82.6068, 3.6959, 7.2041



82.6086, -1.4987, 11.7123



82.6086, -12.2170, 1.6928



82.6086, -7.2859, -3.4350

Sweetspot

The Sweet Spot groups the original color and five complimentary colors.



82.6086, 3.6935, 7.2055



97.3312, -2.6138, 6.1534



83.3830, 7.8491, -3.8330



44.7027, -0.8700, 2.9370

0.0000, NaN, NaN



46.2646, -2.4686, 2.5136

Same Dimension

The Same Dimension uses a secret algorithm to generate beautiful new colors.



82.6086, 3.6935, 7.2055



89.5505, 5.7667, 8.4021



86.2491, -2.5741, 11.1862



38.8001, 1.4098, 3.2753



31.3536, 53.6885, 20.2598



8.7868, 15.0419, 5.6777

Inverse Universe

The Inverse Universe completely reimagines the original color for something new.



88.5926, -12.2809, 2.2796



97.2872, -14.8969, 2.0301



84.7855, -6.1566, -2.2984



41.3781, -5.4710, 1.1536



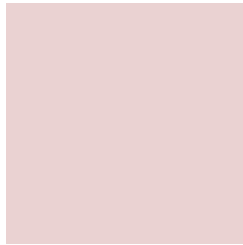
60.3274, -31.9759, -6.3771



16.9054, -8.9608, -1.7865

Previews

White Background



This preview shows how the HunterLab color 82.6068, 3.6959, 7.2041 looks on a white background.

Color Contrast Check

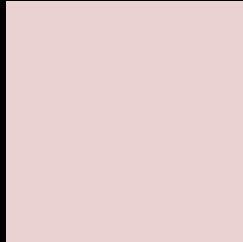
Large Text (above 18pt) WCAG AA × Fail

Any Text WCAG AA × Fail

Large Text (above 18pt) WCAG AAA × Fail

Any Text WCAG AAA × Fail

Black Background



This preview shows how the HunterLab color 82.6068, 3.6959, 7.2041 looks on a black background.

Color Contrast Check

Large Text (above 18pt) WCAG AA ✓ Pass

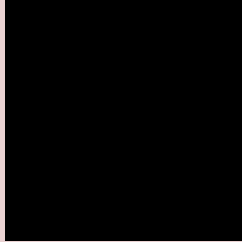
Any Text WCAG AA ✓ Pass

Large Text (above 18pt) WCAG AAA ✓ Pass

Any Text WCAG AAA ✓ Pass

If you want to check with other color combinations, try the [Color Contrast Checker](#).

HunterLab 82.6068, 3.6959, 7.2041 Background



This preview shows how black text looks on a background with the HunterLab color 82.6068, 3.6959, 7.2041.



This preview shows how white text looks on a background with the HunterLab color 82.6068, 3.6959,

Color Blindness Simulation

Color vision deficiency is a very complex topic, and I could not describe the different causes any better than Wikipedia does, so if you want to learn more, you should check out their [article about color blindness](#).

Dichromacy



Original Color

82.6068, 3.6959, 7.2041

Protanopia

82.8376, -3.1228, 5.9332

Deuteranopia

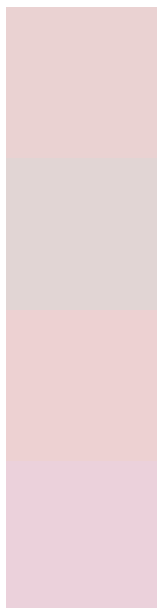
82.4270, 6.1475, 7.0408



Tritanopia

82.6598, 7.8081, 0.4882

Trichromacy



Original Color

82.6068, 3.6959, 7.2041

Protanomaly

82.6738, -0.6047, 6.2628

Deuteranomaly

82.6188, 5.2678, 7.2454

Tritanomaly

82.6907, 6.0674, 3.0075

Monochromacy



Original Color

82.6068, 3.6959, 7.2041

Achromatopsia

83.2990, -4.4446, 4.5258

Achromatomaly

82.8469, -1.4538, 5.4955

CSS Examples

Text

The CSS property to change the color of the text to HunterLab 82.6068, 3.6959, 7.2041 is called "color". The color property can be set on classes, ids or directly on the HTML element.

This example shows how text in the color `rgb(234, 210, 210)` looks like.

```
.text, #text, p{  
    color:rgb(234, 210, 210)  
}
```

If you want to add a text shadow in that color use the text-shadow property, you can generate a text shadow directly with our [CSS Text Shadow Generator](#).

Here you see how black text with a 4 pixel rgb(234, 210, 210) colored shadow looks like.

```
.shadow{ text-shadow: 4px 4px 2px rgb(234, 210, 210) }
```

Border

The CSS property to change the border of an element to HunterLab 82.6068, 3.6959, 7.2041 is called "border".

The border property can be set on classes, ids or directly on the HTML element.

This example shows the color as border, it can be applied via the CSS property "border" or "border-color".

```
.border, #border, table{ border:4px solid rgb(234, 210, 210) }
```


If only the border color should be changed use the property `border-color`.

```
.border{ border-color:rgb(234, 210, 210) }
```

If you want to add a box shadow in that color use:

Here you see how a box with a 4 pixel `rgb(234, 210, 210)` colored shadow looks like.

```
.boxshadow{ -moz-box-shadow:4px 4px 4px 4px rgb(234, 210, 210); -webkit-box-shadow:4px 4px 4px 4px rgb(234, 210, 210); box-shadow:4px 4px 4px 4px rgb(234, 210, 210) }
```

Background

The CSS property to change the background color of an element to HunterLab 82.6068, 3.6959, 7.2041 is called "background". The background property can be set on classes, ids or directly on the HTML element.

```
.background, #background, body{  
background: rgb(234, 210, 210) }
```

If only the background color should be changed can be used:

```
.background{ background-color: rgb(234,  
210, 210) }
```

This example shows the color as background, it is applied via the CSS property "background".

To optimize and compress your CSS code, you can use our [online CSS compressor and optimizer](#) based on csstidy. If you want to create a linear or radial gradient as background or border, check our [CSS Gradient Generator](#).

Hey! You found this booklet interesting? Support Converting Colors with the new Membership Option!

The pro membership hides all ads, plus gives you double the colors in the color bucket, and more awesome pro features!

[Learn more, Memberships starting at \\$2.50/m!](#)

**Follow me
on Twitter!**

@ConvertingColor