

Converting Colors

HunterLab(82.6636, 5.2333,
3.6363)

Have a look what the booklet for
HunterLab(82.6636, 5.2333, 3.6363)
contains.

HunterLab(82.5562, 5.5527, 3.3315)	3
<i>Conversions</i>	4
<i>Details</i>	6
<i>Harmonies</i>	12
<i>Previews</i>	24
<i>Color Blindness Simulation</i>	28
<i>CSS Examples</i>	31

Color

**HunterLab(82.5562, 5.5527,
3.3315)**

Conversions

Conversions Part 1

Format	Color
Hex	EAD1DA
RGB	234, 209, 218
RGB Percent	92%, 82%, 85%
CMY	0.0823, 0.1804, 0.1451
CMYK	0.00, 0.11, 0.07, 0.08
HSL	338°, 37%, 87%
HSV	338°, 11%, 92%
XYZ	69.3870, 68.1553, 75.8278
YIQ	217.5010, 12.0110, 8.0990

Conversions

Conversions Part 2

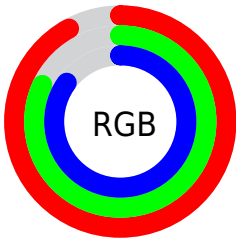
Format	Color
R_{YB}	234, 209, 218
Decimal	15389146
CIE Lab	86.09, 10.19, -1.27
CIE LCh	86, 10.271, 352.904
Yxy	68.1583, 0.3252, 0.3194
Android (android.graphics.Color)	4293579226 (0xFFEAD1DA)
YUV	217.5010, 0.2460, 14.4696
Hunter-Lab	82.5562, 5.5527, 3.3315

Details

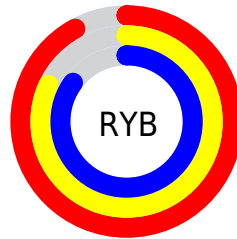
The HunterLab color $82.5562, 5.5527, 3.3315$ is a light color, and the websafe version is hex `CCCCCC`. A complement of this color would be $88.2264, -14.1668, 6.2433$, and the grayscale version is $83.5126, -4.4560, 4.5374$.

A 20% lighter version of the original color is $100.0000, -5.3358, 5.4332$, and $59.6255, 5.5006, 2.3819$ is the 20% darker color. If you saturate the color by 10%, you get $75.3374, 15.5092, 2.2178$, and if you desaturate by 10%, it is $90.1757, -4.1845, 4.8157$.

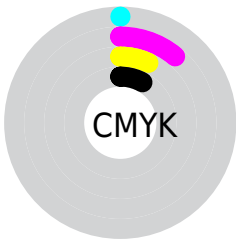
Distribution



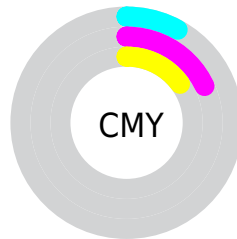
- Red (92%)
- Green (82%)
- Blue (85%)



- Red (92%)
- Yellow (82%)
- Blue (85%)



- Cyan (0%)
- Magenta (11%)
- Yellow (7%)
- Black (8%)



- Cyan (8%)
- Magenta (18%)
- Yellow (15%)

Brightness & Saturation Gradients

These gradients show how the HunterLab color 82.5562, 5.5527, 3.3315 changes by changing the brightness by 10 percent. The first figure shows a shift by +10% for each color and the second figure -10%.

Similar to the brightness gradients but the following saturation gradients show a change of the HunterLab color 82.5562, 5.5527, 3.3315 by changing the saturation by 10% instead.

82.5562, 5.5527,
3.3315

82.5562, 5.5527,
3.3315

213.0860, 2.1345,
10.0117

70.7294, 5.7054,
2.7465

107.9715, 5.0841,
4.6091

59.5268, 5.8019,
2.1974

121.5055, 4.7805,
5.2955

48.9875, 5.8333,
1.6880

135.5619, 4.4339,
6.0121

39.1560, 5.7915,
1.2218

150.1222, 4.0470,
6.7579

30.0877, 5.6654,
0.8028

165.1693, 3.6217,
7.5317

21.8530, 5.4396,
0.4364

180.6881, 3.1602,

14.5471, 5.0914,

8.3324

0.1307

196.6646, 2.6639,
9.1594

8.2080, 4.9917,
-0.1940

0.0000, NaN, NaN

82.5562, 5.5527,
3.3315

82.5562, 5.5527,
3.3315

75.3374, 15.5092,
2.2178

90.1757, -4.1845,
4.8157

68.5846, 25.6473,
1.5594

97.8710, -13.2780,
6.2968

62.3868, 35.8441,
1.4654

98.0982, -12.0160,
3.0569

56.8492, 45.8536,
2.0551

■ 52.0905, 55.2513,
3.4376

■ 48.2311, 63.4141,
5.6697

■ 45.3660, 69.6055,
8.6962

■ 43.5249, 73.2269,
12.3023

■ 42.5865, 74.4417,
15.8054

Harmonies

Analogous

The Analogous color harmony consists of three colors that are next to each other on the color wheel.



82.5580, 3.5600, -1.3340



82.5562, 5.5527, 3.3315



82.5580, 4.8208, 8.0431

Triad

The Triadic color harmony groups three colors that are evenly spaced from another and form a triangle on the color wheel.



82.5580, 5.5504, 3.3329



82.5580, -8.1920, 12.6346



82.5580, -10.2423, -3.2997

Complementary

The Complementary color scheme is a pair of colors which are on the opposite of each other on the color wheel.



82.5562, 5.5527, 3.3315



88.2264, -14.1668, 6.2433

Split Complementary

Split-complementary colors differ from the complementary color scheme. The scheme consists of three colors, the original color and two neighbors of the complement color.



82.5580, -13.2513, 0.7797



82.5562, 5.5527, 3.3315



82.5580, -12.0878, 9.9256

Square

The Square scheme is like the rectangle color scheme, but the four colors are evenly spaced on the color wheel.



82.5580, 5.5504, 3.3329



82.5580, -3.1944, 13.2266



82.5580, -13.9186, 5.6382



82.5580, -5.6177, -5.3111

Rectangle

The Rectangle color scheme consists of four colors that form a rectangle on the color wheel.



82.5562, 5.5527, 3.3315



82.5580, 2.8983, 10.5964



82.5580, -13.9186, 5.6382



82.5580, -11.4717, -2.1133

Sweetspot

The Sweet Spot groups the original color and five complimentary colors.



82.5580, 5.5504, 3.3329



97.4189, -2.1330, 4.8960



82.1738, 5.3266, -5.4367



44.7540, -0.5890, 2.2011

0.0000, NaN, NaN



46.2646, -2.4686, 2.5136

Same Dimension

The Same Dimension uses a secret algorithm to generate beautiful new colors.



82.5580, 5.5504, 3.3329



89.0791, 8.7093, 3.3418



83.2782, 2.3079, 8.4075



38.9148, 2.0309, 1.6295



31.9583, 55.9295, 11.3485



9.0544, 16.0356, 1.7454

Inverse Universe

The Inverse Universe completely reimagines the original color for something new.



82.5580, 5.5504, 3.3329



89.0791, 8.7093, 3.3418



87.4432, -10.8866, 0.9109



38.9148, 2.0309, 1.6295



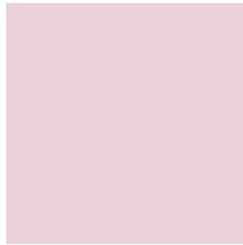
31.9583, 55.9295, 11.3485



9.0544, 16.0356, 1.7454

Previews

White Background



This preview shows how the HunterLab color 82.5562, 5.5527, 3.3315 looks on a white background.

Color Contrast Check

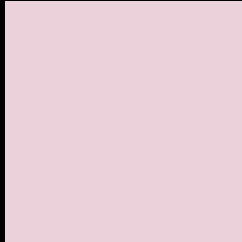
Large Text (above 18pt) WCAG AA × Fail

Any Text WCAG AA × Fail

Large Text (above 18pt) WCAG AAA × Fail

Any Text WCAG AAA × Fail

Black Background



This preview shows how the HunterLab color 82.5562, 5.5527, 3.3315 looks on a black background.

Color Contrast Check

Large Text (above 18pt) WCAG AA ✓ Pass

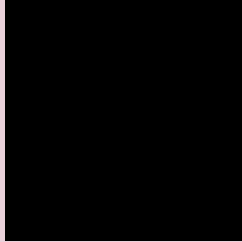
Any Text WCAG AA ✓ Pass

Large Text (above 18pt) WCAG AAA ✓ Pass

Any Text WCAG AAA ✓ Pass

If you want to check with other color combinations, try the [Color Contrast Checker](#).

HunterLab 82.5562, 5.5527, 3.3315 Background



This preview shows how black text looks on a background with the HunterLab color 82.5562, 5.5527, 3.3315.



This preview shows how white text looks on a background with the HunterLab color 82.5562, 5.5527,

Color Blindness Simulation

Color vision deficiency is a very complex topic, and I could not describe the different causes any better than Wikipedia does, so if you want to learn more, you should check out their [article about color blindness](#).

Dichromacy



Original Color

82.5562, 5.5527, 3.3315

Protanopia

82.5948, -1.8807, 1.7565

Deuteranopia

82.6590, 5.8974, 3.4601



Tritanopia

82.5565, 7.4638, 0.3552

Trichromacy



Original Color

82.5562, 5.5527, 3.3315

Protanomaly

82.5237, 0.9430, 2.2201

Deuteranomaly

82.6590, 5.8974, 3.4601

Tritanomaly

82.4911, 7.1150, 1.2848

Monochromacy



Original Color

82.5562, 5.5527, 3.3315

Achromatopsia

83.7318, -4.4677, 4.5493

Achromatomaly

83.3727, -0.9664, 4.1870

CSS Examples

Text

The CSS property to change the color of the text to HunterLab 82.5562, 5.5527, 3.3315 is called "color". The color property can be set on classes, ids or directly on the HTML element.

This example shows how text in the color `rgb(234, 209, 218)` looks like.

```
.text, #text, p{  
    color:rgb(234, 209, 218)  
}
```

If you want to add a text shadow in that color use the text-shadow property, you can generate a text shadow directly with our [CSS Text Shadow Generator](#).

Here you see how black text with a 4 pixel rgb(234, 209, 218) colored shadow looks like.

```
.shadow{ text-shadow: 4px 4px 2px rgb(234, 209, 218) }
```

Border

The CSS property to change the border of an element to HunterLab 82.5562, 5.5527, 3.3315 is called "border". The border property can be set on classes, ids or directly on the HTML element.

This example shows the color as border, it can be applied via the CSS property "border" or "border-color".

```
.border, #border, table{ border:4px solid rgb(234, 209, 218) }
```


If only the border color should be changed use the property `border-color`.

```
.border{ border-color:rgb(234, 209, 218) }
```

If you want to add a box shadow in that color use:

Here you see how a box with a 4 pixel `rgb(234, 209, 218)` colored shadow looks like.

```
.boxshadow{ -moz-box-shadow:4px 4px 4px  
4px rgb(234, 209, 218); -webkit-box-  
shadow:4px 4px 4px 4px rgb(234, 209, 218);  
box-shadow:4px 4px 4px 4px rgb(234, 209,  
218) }
```

Background

The CSS property to change the background color of an element to HunterLab 82.5562, 5.5527, 3.3315 is called "background". The background property can be set on classes, ids or directly on the HTML element.

```
.background, #background, body{  
background: rgb(234, 209, 218) }
```

If only the background color should be changed can be used:

```
.background{ background-color: rgb(234,  
209, 218) }
```

This example shows the color as background, it is applied via the CSS property "background".

To optimize and compress your CSS code, you can use our [online CSS compressor and optimizer](#) based on csstidy. If you want to create a linear or radial gradient as background or border, check our [CSS Gradient Generator](#).

Hey! You found this booklet interesting? Support Converting Colors with the new Membership Option!

The pro membership hides all ads, plus gives you double the colors in the color bucket, and more awesome pro features!

[Learn more, Memberships starting at \\$2.50/m!](#)

**Follow me
on Twitter!**

@ConvertingColor