

Converting Colors

HunterLab(82.7211, 0.0397,
14.8020)

Have a look what the booklet for
HunterLab(82.7211, 0.0397,
14.8020) contains.

HunterLab(82.7222, 0.0279, 14.8127)	3
<i>Conversions</i>	4
<i>Details</i>	6
<i>Harmonies</i>	12
<i>Previews</i>	24
<i>Color Blindness Simulation</i>	28
<i>CSS Examples</i>	31

Color

**HunterLab(82.7222, 0.0279,
14.8127)**

Conversions

Conversions Part 1

Format	Color
Hex	EAD4C1
RGB	234, 212, 193
RGB Percent	92%, 83%, 76%
CMY	0.0824, 0.1686, 0.2431
CMYK	0.00, 0.09, 0.18, 0.08
HSL	28°, 49%, 84%
HSV	28°, 18%, 92%
XYZ	67.1008, 68.4296, 60.1237
YIQ	216.4120, 19.2110, -1.2450

Conversions

Conversions Part 2

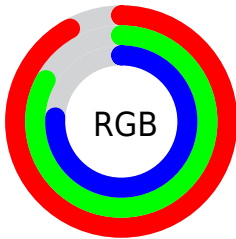
Format	Color
RYB	234, 228, 193
Decimal	15389889
CIELab	86.22, 4.60, 12.16
CIELCh	86, 13.005, 69.275
Yxy	68.4327, 0.3430, 0.3498
Android (android.graphics.Color)	4293579969 (0xFFEAD4C1)
YUV	216.4120, -11.5421, 15.4247
Hunter-Lab	82.7222, 0.0279, 14.8127

Details

The HunterLab color $82.7222, 0.0279, 14.8127$ is a light color, and the websafe version is hex `CCCCCC`. A complement of this color would be $81.1649, -7.5697, -6.9821$, and the grayscale version is $83.0886, -4.4334, 4.5144$.

A 20% lighter version of the original color is $99.8096, -6.3799, 8.1519$, and $59.5340, 0.9871, 12.3759$ is the 20% darker color. If you saturate the color by 10%, you get $78.3805, 3.2958, 19.7371$, and if you desaturate by 10%, it is $87.2259, -2.8793, 9.3534$.

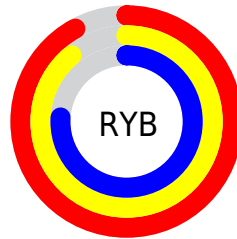
Distribution



Red (92%)

Green (83%)

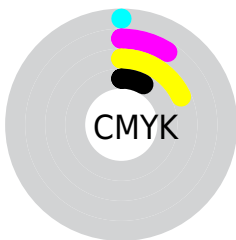
Blue (76%)



Red (92%)

Yellow (89%)

Blue (76%)

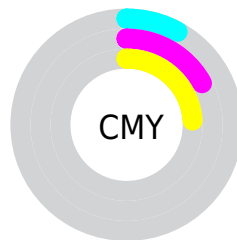


Cyan (0%)

Magenta (9%)

Yellow (18%)

Black (8%)



Cyan (8%)

Magenta (17%)

Yellow (24%)

Brightness & Saturation Gradients

These gradients show how the HunterLab color 82.7222, 0.0279, 14.8127 changes by changing the brightness by 10 percent. The first figure shows a shift by +10% for each color and the second figure -10%.

Similar to the brightness gradients but the following saturation gradients show a change of the HunterLab color 82.7222, 0.0279, 14.8127 by changing the saturation by 10% instead.

82.7222, 0.0279,
14.8127

82.7222, 0.0279,
14.8127

213.3137, -5.3292,
26.2233

70.8871, 0.4394,
13.5775

108.1531, -0.9257,
17.2925

59.6757, 0.8082,
12.3379

121.6943, -1.4578,
18.5399

49.1270, 1.1275,
11.0894

135.7578, -2.0247,
19.7950

39.2855, 1.3920,
9.8235

150.3248, -2.6248,
21.0592

30.2063, 1.5946,
8.5274

165.3785, -3.2565,
22.3334

21.9597, 1.7255,
7.1800

180.9036, -3.9186,

14.6403, 1.7698,

23.6185

5.7446

196.8863, -4.6099,
24.9150

■ 8.2997, 1.9729,
5.8098

0.0000, NaN, NaN

■ 82.7222, 0.0279,
14.8127

■ 82.7222, 0.0279,
14.8127

■ 78.3805, 3.2958,
19.7371

■ 87.2259, -2.8793,
9.3534

■ 74.2104, 6.9581,
24.0576

■ 91.8726, -5.4464,
3.4143

■ 70.2305, 11.0341,
27.7041

■ 96.3725, -9.2453,
1.0181

■ 66.4593, 15.5367,
30.6029

■ 98.0982, -12.0162,
3.0569

■ 62.9163, 20.4645,
32.6834

■ 59.6218, 25.7940,
33.8885

■ 56.5954, 31.4701,
34.1933

■ 53.8521, 37.3873,
33.6545

■ 53.2128, 38.8541,
33.4697

Harmonies

Analogous

The Analogous color harmony consists of three colors that are next to each other on the color wheel.



82.7241, 5.4230, 11.6423



82.7222, 0.0279, 14.8127



82.7241, -6.4118, 15.3408

Triad

The Triadic color harmony groups three colors that are evenly spaced from another and form a triangle on the color wheel.



82.7241, 0.0254, 14.8139



82.7241, -16.3291, 2.5748



82.7241, 3.5964, -5.1810

Complementary

The Complementary color scheme is a pair of colors which are on the opposite of each other on the color wheel.



82.7222, 0.0279, 14.8127



81.1649, -7.5697, -6.9821

Split Complementary

Split-complementary colors differ from the complementary color scheme. The scheme consists of three colors, the original color and two neighbors of the complement color.



82.7241, -2.4059, -8.0343



82.7222, 0.0279, 14.8127



82.7241, -13.8202, -3.3356

Square

The Square scheme is like the rectangle color scheme, but the four colors are evenly spaced on the color wheel.



82.7241, 0.0254, 14.8139



82.7241, -15.7233, 8.5780



82.7241, -8.7703, -7.3342



82.7241, 7.5283, 0.2093

Rectangle

The Rectangle color scheme consists of four colors that form a rectangle on the color wheel.



82.7222, 0.0279, 14.8127



82.7241, -10.4079, 14.1651



82.7241, -8.7703, -7.3342



82.7241, 1.7466, -6.4867

Sweetspot

The Sweet Spot groups the original color and five complimentary colors.



82.7241, 0.0254, 14.8139



97.4264, -3.9147, 8.7234



77.8254, 13.6668, -1.0667



44.9080, -1.7154, 4.2451

0.0000, NaN, NaN



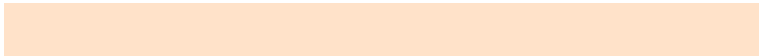
46.2646, -2.4686, 2.5136

Same Dimension

The Same Dimension uses a secret algorithm to generate beautiful new colors.



82.7241, 0.0254, 14.8139



89.4644, 1.2699, 18.3447



88.8979, -10.1969, 20.9506



40.2552, -1.0916, 4.8749



40.1973, 28.3781, 25.2662



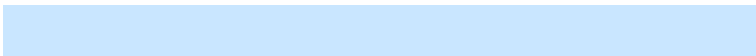
12.0811, 6.0606, 7.5504

Inverse Universe

The Inverse Universe completely reimagines the original color for something new.



81.1649, -7.5697, -6.9821



87.4030, -8.7612, -10.4734



75.0543, 2.7202, -15.1967



39.8590, -3.0247, -0.6637



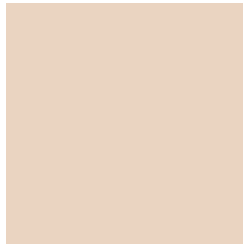
34.5130, 4.9357, -53.7930



10.6189, -0.2929, -12.6403

Previews

White Background



This preview shows how the HunterLab color 82.7222, 0.0279, 14.8127 looks on a white background.

Color Contrast Check

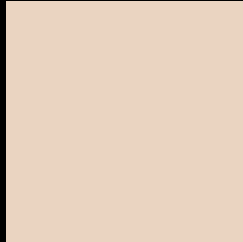
Large Text (above 18pt) WCAG AA × Fail

Any Text WCAG AA × Fail

Large Text (above 18pt) WCAG AAA × Fail

Any Text WCAG AAA × Fail

Black Background



This preview shows how the HunterLab color 82.7222, 0.0279, 14.8127 looks on a black background.

Color Contrast Check

Large Text (above 18pt) WCAG AA ✓ Pass

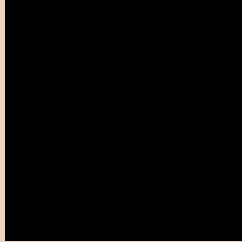
Any Text WCAG AA ✓ Pass

Large Text (above 18pt) WCAG AAA ✓ Pass

Any Text WCAG AAA ✓ Pass

If you want to check with other color combinations, try the [Color Contrast Checker](#).

HunterLab 82.7222, 0.0279, 14.8127 Background



This preview shows how black text looks on a background with the HunterLab color 82.7222, 0.0279, 14.8127.



This preview shows how white text looks on a background with the HunterLab color 82.7222, 0.0279,

Color Blindness Simulation

Color vision deficiency is a very complex topic, and I could not describe the different causes any better than Wikipedia does, so if you want to learn more, you should check out their [article about color blindness](#).

Dichromacy



Original Color

82.7222, 0.0279, 14.8127

Protanopia

82.7941, -4.3170, 13.9689

Deuteranopia

82.7159, 6.1976, 14.4935



Tritanopia

82.5740, 9.0351, 0.4042

Trichromacy



Original Color

82.7222, 0.0279, 14.8127

Protanomaly

82.7539, -2.9341, 14.3738

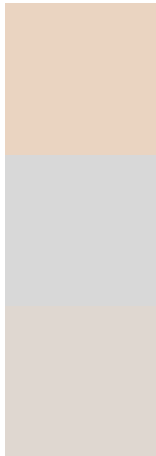
Deuteranomaly

82.5813, 4.2239, 14.3163

Tritanomaly

82.7101, 5.7570, 5.9406

Monochromacy



Original Color

82.7222, 0.0279, 14.8127

Achromatopsia

82.8665, -4.4215, 4.5023

Achromatomaly

82.9716, -2.9603, 8.4326

CSS Examples

Text

The CSS property to change the color of the text to HunterLab 82.7222, 0.0279, 14.8127 is called "color". The color property can be set on classes, ids or directly on the HTML element.

This example shows how text in the color `rgb(234, 212, 193)` looks like.

```
.text, #text, p{  
    color:rgb(234, 212, 193)  
}
```

If you want to add a text shadow in that color use the text-shadow property, you can generate a text shadow directly with our [CSS Text Shadow Generator](#).

Here you see how black text with a 4 pixel rgb(234, 212, 193) colored shadow looks like.

```
.shadow{ text-shadow: 4px 4px 2px rgb(234, 212, 193) }
```

Border

The CSS property to change the border of an element to HunterLab 82.7222, 0.0279, 14.8127 is called "border". The border property can be set on classes, ids or directly on the HTML element.

This example shows the color as border, it can be applied via the CSS property "border" or "border-color".

```
.border, #border, table{ border:4px solid rgb(234, 212, 193) }
```


If only the border color should be changed use the property `border-color`.

```
.border{ border-color:rgb(234, 212, 193) }
```

If you want to add a box shadow in that color use:

Here you see how a box with a 4 pixel `rgb(234, 212, 193)` colored shadow looks like.

```
.boxshadow{ -moz-box-shadow:4px 4px 4px  
4px rgb(234, 212, 193); -webkit-box-  
shadow:4px 4px 4px 4px rgb(234, 212, 193);  
box-shadow:4px 4px 4px 4px rgb(234, 212,  
193) }
```

Background

The CSS property to change the background color of an element to HunterLab 82.7222, 0.0279, 14.8127 is called "background". The background property can be set on classes, ids or directly on the HTML element.

```
.background, #background, body{  
background: rgb(234, 212, 193) }
```

If only the background color should be changed can be used:

```
.background{ background-color: rgb(234,  
212, 193) }
```

This example shows the color as background, it is applied via the CSS property "background".

To optimize and compress your CSS code, you can use our [online CSS compressor and optimizer](#) based on csstidy. If you want to create a linear or radial gradient as background or border, check our [CSS Gradient Generator](#).

Hey! You found this booklet interesting? Support Converting Colors with the new Membership Option!

The pro membership hides all ads, plus gives you double the colors in the color bucket, and more awesome pro features!

[Learn more, Memberships starting at \\$2.50/m!](#)

**Follow me
on Twitter!**

@ConvertingColor