

# Converting Colors

HunterLab(82.7432, 4.1914,  
15.6089)

Have a look what the booklet for  
HunterLab(82.7432, 4.1914,  
15.6089) contains.

<b>HunterLab(82.6074, 4.1502, 15.5977)</b> .....	3
<b><i>Conversions</i></b> .....	4
<b><i>Details</i></b> .....	6
<b><i>Harmonies</i></b> .....	12
<b><i>Previews</i></b> .....	24
<b><i>Color Blindness Simulation</i></b> .....	28
<b><i>CSS Examples</i></b> .....	31

# Color

**HunterLab(82.6074, 4.1502,  
15.5977)**

# Conversions

## Conversions Part 1

<b>Format</b>	<b>Color</b>
Hex	F2D1BF
RGB	242, 209, 191
RGB Percent	95%, 82%, 75%
CMY	0.0510, 0.1804, 0.2510
CMYK	0.00, 0.14, 0.21, 0.05
HSL	21°, 66%, 85%
HSV	21°, 21%, 95%
XYZ	68.8224, 68.2398, 58.8346
YIQ	216.8150, 25.4460, 1.3980

# Conversions

## Conversions Part 2

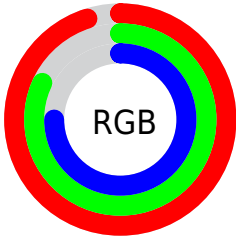
<b>Format</b>	<b>Color</b>
<b>R<sub>YB</sub></b>	242, 219, 191
Decimal	15913407
CIE Lab	86.13, 8.79, 13.18
CIE LCh	86, 15.841, 56.317
Yxy	68.2429, 0.3513, 0.3484
Android (android.graphics.Color)	4294103487 (0xFFFF2D1BF)
YUV	216.8150, -12.7268, 22.0872
Hunter-Lab	82.6074, 4.1502, 15.5977

# Details

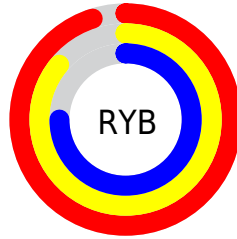
The HunterLab color **82.6074, 4.1502, 15.5977** is a light color, and the websafe version is hex **FFCCCC**. A complement of this color would be **84.1408, -11.1175, -7.5417**, and the grayscale version is **83.2661, -4.4429, 4.5240**.

A 20% lighter version of the original color is **99.7474, -6.7215, 9.0414**, and **59.6590, 4.2555, 12.9401** is the 20% darker color. If you saturate the color by 10%, you get **77.4304, 9.0901, 19.9508**, and if you desaturate by 10%, it is **88.0126, -0.4044, 10.8251**.

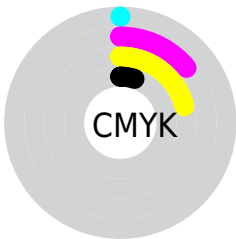
# Distribution



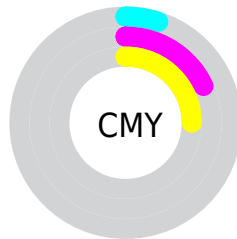
- Red (95%)
- Green (82%)
- Blue (75%)



- Red (95%)
- Yellow (86%)
- Blue (75%)



- Cyan (0%)
- Magenta (14%)
- Yellow (21%)
- Black (5%)




- Cyan (5%)
- Magenta (18%)
- Yellow (25%)

# Brightness & Saturation Gradients

These gradients show how the HunterLab color 82.6074, 4.1502, 15.5977 changes by changing the brightness by 10 percent. The first figure shows a shift by +10% for each color and the second figure -10%.


Similar to the brightness gradients but the following saturation gradients show a change of the HunterLab color 82.6074, 4.1502, 15.5977 by changing the saturation by 10% instead.



 82.6074, 4.1502,  
15.5977

 82.6074, 4.1502,  
15.5977

213.1563, 0.2469,  
27.3844

 70.7781, 4.3671,  
14.3098


 108.0276, 3.5602,  
18.1743

 59.5728, 4.5313,  
13.0139

121.5638, 3.1995,  
19.4664

 49.0306, 4.6342,  
11.7046


135.6224, 2.7979,  
20.7644

 39.1960, 4.6683,  
10.3724

150.1847, 2.3576,  
22.0698

 30.1243, 4.6234,  
9.0026

165.2339, 1.8807,  
23.3836

 21.8860, 4.4853,  
7.5719

180.7546, 1.3689,

 14.5758, 4.2328,

24.7069

6.0391

196.7330, 0.8239,  
26.0403

■ 8.2364, 4.2105,  
5.7655

0.0000, NaN, NaN

■ 82.6074, 4.1502,  
15.5977

■ 82.6074, 4.1502,  
15.5977

■ 77.4304, 9.0901,  
19.9508

■ 88.0126, -0.4044,  
10.8251

■ 72.5032, 14.4490,  
23.8075

■ 93.6170, -4.5975,  
5.6904

■ 67.8589, 20.2371,  
27.0838

■ 98.8015, -9.5303,  
3.9408

■ 63.5327, 26.4450,  
29.6847

■ 59.5632, 33.0269,  
31.5128

■ 55.9907, 39.8847,  
32.4841

■ 52.8538, 46.8505,  
32.5594

■ 50.4410, 52.9293,  
32.0081

# Harmonies

## Analogous

The Analogous color harmony consists of three colors that are next to each other on the color wheel.



82.6093, 9.5918, 10.6263



82.6074, 4.1502, 15.5977



82.6093, -3.4380, 17.6089

# Triad

The Triadic color harmony groups three colors that are evenly spaced from another and form a triangle on the color wheel.



82.6093, 4.1475, 15.5989



82.6093, -18.9753, 5.4160



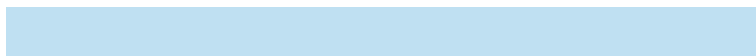
82.6093, 2.4029, -9.4727

# Complementary

The Complementary color scheme is a pair of colors which are on the opposite of each other on the color wheel.



82.6074, 4.1502, 15.5977



84.1408, -11.1175, -7.5417

# Split Complementary

Split-complementary colors differ from the complementary color scheme. The scheme consists of three colors, the original color and two neighbors of the complement color.



82.6093, -5.3820, -11.1945



82.6074, 4.1502, 15.5977



82.6093, -17.5415, -2.1420

# Square

The Square scheme is like the rectangle color scheme, but the four colors are evenly spaced on the color wheel.



82.6093, 4.1475, 15.5989



82.6093, -16.6290, 12.0873



82.6093, -12.6371, -8.3987



82.6093, 8.5584, -3.8905



# Rectangle

The Rectangle color scheme consists of four colors that form a rectangle on the color wheel.



82.6074, 4.1502, 15.5977



82.6093, -8.6201, 17.1515



82.6093, -12.6371, -8.3987



82.6093, -0.1184, -10.5434

# Sweetspot

The Sweet Spot groups the original color and five complimentary colors.



82.6093, 4.1475, 15.5989



96.3845, -2.7249, 8.7766



78.4409, 19.1176, -4.7153



44.4118, -1.1256, 4.2253

0.0000, NaN, NaN



46.2646, -2.4686, 2.5136



# Same Dimension

The Same Dimension uses a secret algorithm to generate beautiful new colors.



82.6093, 4.1475, 15.5989



85.4413, 6.4461, 18.4574



90.3795, -8.9622, 23.1989



40.8311, -0.5051, 4.6045



37.2835, 37.9335, 23.6380



11.5633, 8.8349, 7.2799

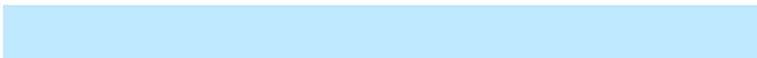


# Inverse Universe

The Inverse Universe completely reimagines the original color for something new.



84.1408, -11.1175, -7.5417



87.3617, -12.7282, -10.5987



76.2720, 1.9268, -18.2690



41.1524, -3.6982, -0.2391



40.7260, -4.7333, -40.6861

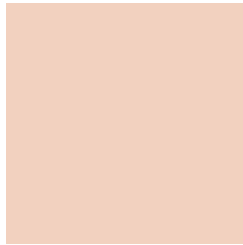


12.5147, -2.5584, -10.1194



# Previews

## White Background



This preview shows how the HunterLab color 82.6074, 4.1502, 15.5977 looks on a white background.

## Color Contrast Check

Large Text (above 18pt) WCAG AA × Fail

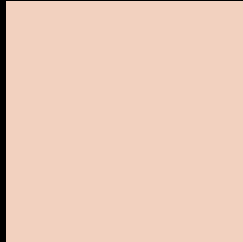
Any Text WCAG AA × Fail

Large Text (above 18pt) WCAG AAA × Fail

Any Text WCAG AAA × Fail



# Black Background



This preview shows how the HunterLab color 82.6074, 4.1502, 15.5977 looks on a black background.

## Color Contrast Check

Large Text (above 18pt) WCAG AA ✓ Pass

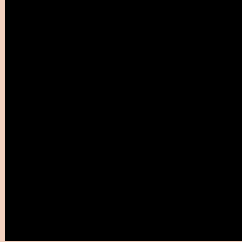
Any Text WCAG AA ✓ Pass

Large Text (above 18pt) WCAG AAA ✓ Pass

Any Text WCAG AAA ✓ Pass

If you want to check with other color combinations, try the [Color Contrast Checker](#).

## HunterLab 82.6074, 4.1502, 15.5977 Background



This preview shows how black text looks on a background with the HunterLab color 82.6074, 4.1502, 15.5977.



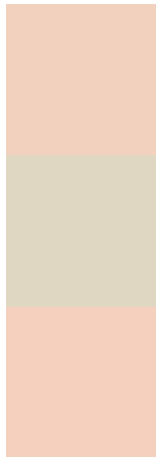
This preview shows how white text looks on a background with the HunterLab color 82.6074, 4.1502,



# Color Blindness Simulation

Color vision deficiency is a very complex topic, and I could not describe the different causes any better than Wikipedia does, so if you want to learn more, you should check out their [article about color blindness](#).

## Dichromacy



### Original Color

82.6074, 4.1502, 15.5977

### Protanopia

82.6700, -4.8034, 14.2522

### Deuteranopia

82.6352, 5.7656, 15.6551



## Tritanopia

82.7502, 12.4146, 2.1947

# Trichromacy



## Original Color

82.6074, 4.1502, 15.5977

## Protanomaly

82.7210, -1.5344, 14.7841

## Deuteranomaly

82.5266, 5.4010, 15.5353

## Tritanomaly

82.5883, 9.7033, 7.2881

# Monochromacy



## Original Color

82.6074, 4.1502, 15.5977

## Achromatopsia

83.2990, -4.4446, 4.5258

## Achromatomaly

82.9554, -1.4435, 8.4408

# CSS Examples

## Text

The CSS property to change the color of the text to HunterLab 82.6074, 4.1502, 15.5977 is called "color". The color property can be set on classes, ids or directly on the HTML element.

This example shows how text in the color `rgb(242, 209, 191)` looks like.

```
.text, #text, p{  
    color:rgb(242, 209, 191)  
}
```

If you want to add a text shadow in that color use the text-shadow property, you can generate a text shadow directly with our [CSS Text Shadow Generator](#).

Here you see how black text with a 4 pixel rgb(242, 209, 191) colored shadow looks like.

```
.shadow{ text-shadow: 4px 4px 2px rgb(242, 209, 191) }
```

## Border

The CSS property to change the border of an element to HunterLab 82.6074, 4.1502, 15.5977 is called "border". The border property can be set on classes, ids or directly on the HTML element.

This example shows the color as border, it can be applied via the CSS property "border" or "border-color".

```
.border, #border, table{ border:4px solid rgb(242, 209, 191) }
```



If only the border color should be changed use the property `border-color`.

```
.border{ border-color:rgb(242, 209, 191) }
```

If you want to add a box shadow in that color use:

Here you see how a box with a 4 pixel `rgb(242, 209, 191)` colored shadow looks like.

```
.boxshadow{ -moz-box-shadow:4px 4px 4px 4px rgb(242, 209, 191); -webkit-box-shadow:4px 4px 4px 4px rgb(242, 209, 191); box-shadow:4px 4px 4px 4px rgb(242, 209, 191) }
```

# Background

The CSS property to change the background color of an element to HunterLab 82.6074, 4.1502, 15.5977 is called "background". The background property can be set on classes, ids or directly on the HTML element.

```
.background, #background, body{  
background: rgb(242, 209, 191) }
```

If only the background color should be changed can be used:

```
.background{ background-color: rgb(242,  
209, 191) }
```

This example shows the color as background, it is applied via the CSS property "background".

To optimize and compress your CSS code, you can use our [online CSS compressor and optimizer](#) based on csstidy. If you want to create a linear or radial gradient as background or border, check our [CSS Gradient Generator](#).

Hey! You found this booklet interesting? Support Converting Colors with the new Membership Option!

The pro membership hides all ads, plus gives you double the colors in the color bucket, and more awesome pro features!

**[Learn more, Memberships starting at \\$2.50/m!](#)**

**Follow me  
on Twitter!**

@ConvertingColor