

Converting Colors

HunterLab(82.7607, 2.7277,
6.7262)

Have a look what the booklet for
HunterLab(82.7607, 2.7277, 6.7262)
contains.

HunterLab(82.7330, 2.6440, 6.8607)	3
<i>Conversions</i>	4
<i>Details</i>	6
<i>Harmonies</i>	12
<i>Previews</i>	24
<i>Color Blindness Simulation</i>	28
<i>CSS Examples</i>	31

Color

**HunterLab(82.7330, 2.6440,
6.8607)**

Conversions

Conversions Part 1

Format	Color
Hex	E8D3D3
RGB	232, 211, 211
RGB Percent	91%, 83%, 83%
CMY	0.0902, 0.1725, 0.1725
CMYK	0.00, 0.09, 0.09, 0.09
HSL	0°, 31%, 87%
HSV	0°, 9%, 91%
XYZ	68.3309, 68.4475, 71.2383
YIQ	217.2790, 12.5160, 4.4520

Conversions

Conversions Part 2

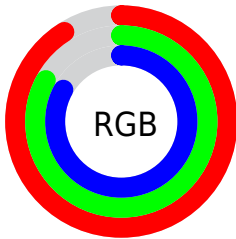
Format	Color
R _Y B	232, 211, 211
Decimal	15258579
CIE Lab	86.23, 7.27, 2.63
CIE LCh	86, 7.730, 19.919
Yxy	68.4505, 0.3285, 0.3291
Android (android.graphics.Color)	4293448659 (0xFFE8D3D3)
YUV	217.2790, -3.0955, 12.9103
Hunter-Lab	82.7330, 2.6440, 6.8607

Details

The HunterLab color $82.7330, 2.6440, 6.8607$ is a light color, and the websafe version is hex `CCCCCC`. A complement of this color would be $87.9698, -11.3299, 2.5533$, and the grayscale version is $83.4304, -4.4516, 4.5329$.

A 20% lighter version of the original color is $100.0000, -5.3358, 5.4332$, and $59.5326, 3.3951, 4.9749$ is the 20% darker color. If you saturate the color by 10%, you get $75.2752, 11.2042, 9.1951$, and if you desaturate by 10%, it is $90.5916, -5.5559, 4.6798$.

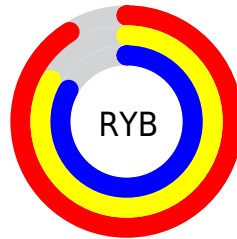
Distribution



Red (91%)

Green (83%)

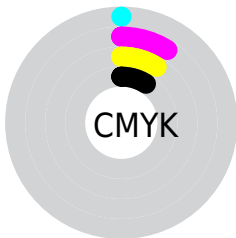
Blue (83%)



Red (91%)

Yellow (83%)

Blue (83%)

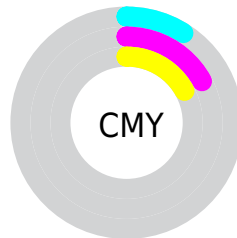


Cyan (0%)

Magenta (9%)

Yellow (9%)

Black (9%)



Cyan (9%)

Magenta (17%)

Yellow (17%)

Brightness & Saturation Gradients

These gradients show how the HunterLab color 82.7330, 2.6440, 6.8607 changes by changing the brightness by 10 percent. The first figure shows a shift by +10% for each color and the second figure -10%.

Similar to the brightness gradients but the following saturation gradients show a change of the HunterLab color 82.7330, 2.6440, 6.8607 by changing the saturation by 10% instead.

82.7330, 2.6440,
6.8607

82.7330, 2.6440,
6.8607

213.3285, -1.7863,
14.8691

70.8973, 2.9317,
6.0957

108.1649, 1.9226,
8.4730

59.6854, 3.1699,
5.3564

121.7066, 1.4998,
9.3164

49.1361, 3.3510,
4.6448

135.7705, 1.0382,
10.1841

39.2939, 3.4684,
3.9614

150.3379, 0.5399,
11.0756

30.2140, 3.5127,
3.3064

165.3921, 0.0069,
11.9904

21.9666, 3.4714,
2.6795

180.9176, -0.5595,

14.6463, 3.3252,

12.9279

2.0788

196.9007, -1.1576,
13.8876

■ 8.3056, 3.3695,
1.7665

0.0000, NaN, NaN

■ 82.7330, 2.6440,
6.8607

■ 82.7330, 2.6440,
6.8607

■ 75.2752, 11.2042,
9.1951

■ 90.5916, -5.5559,
4.6798

■ 68.2858, 20.1407,
11.6871

■ 97.9265, -12.6258,
2.8402

■ 61.8583, 29.4022,
14.3282

■ 56.1055, 38.8295,
17.0731

■ 51.1582, 48.0841,
19.8176

■ 47.1532, 56.5954,
22.3802

■ 44.2049, 63.6014,
24.5139

■ 42.3582, 68.3759,
25.9787

■ 41.4844, 70.7530,
26.7108

Harmonies

Analogous

The Analogous color harmony consists of three colors that are next to each other on the color wheel.



82.7348, 2.9807, 3.2639



82.7330, 2.6440, 6.8607



82.7348, 0.3915, 9.7020

Triad

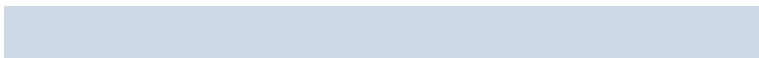
The Triadic color harmony groups three colors that are evenly spaced from another and form a triangle on the color wheel.



82.7348, 2.6417, 6.8620



82.7348, -9.9958, 8.9017



82.7348, -5.7081, -2.7185

Complementary

The Complementary color scheme is a pair of colors which are on the opposite of each other on the color wheel.



82.7330, 2.6440, 6.8607



87.9698, -11.3299, 2.5533

Split Complementary

Split-complementary colors differ from the complementary color scheme. The scheme consists of three colors, the original color and two neighbors of the complement color.



82.7348, -9.1220, -1.0559



82.7330, 2.6440, 6.8607



82.7348, -11.5674, 5.7242

Square

The Square scheme is like the rectangle color scheme, but the four colors are evenly spaced on the color wheel.



82.7348, 2.6417, 6.8620



82.7348, -6.9207, 10.8418



82.7348, -11.2505, 2.0734



82.7348, -1.8871, -2.3797

Rectangle

The Rectangle color scheme consists of four colors that form a rectangle on the color wheel.



82.7330, 2.6440, 6.8607



82.7348, -1.8672, 10.8356



82.7348, -11.2505, 2.0734



82.7348, -6.9402, -2.3723

Sweetspot

The Sweet Spot groups the original color and five complimentary colors.



82.7348, 2.6417, 6.8620



97.3313, -2.6139, 6.1535



83.4095, 6.2745, -2.7617



44.7027, -0.8700, 2.9371

0.0000, NaN, NaN



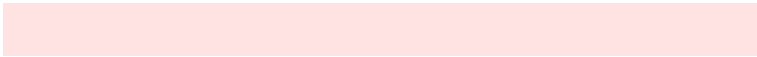
46.2646, -2.4686, 2.5136

Same Dimension

The Same Dimension uses a secret algorithm to generate beautiful new colors.



82.7348, 2.6417, 6.8620



90.3975, 4.8187, 8.1457



85.9286, -2.8320, 10.3757



37.9057, 1.3683, 3.1969



30.8626, 52.8469, 19.9425



8.3906, 14.3626, 5.4217

Inverse Universe

The Inverse Universe completely reimagines the original color for something new.



87.9698, -11.3299, 2.5533



97.4984, -14.1417, 2.2983



84.6483, -5.9663, -1.4185



40.4177, -5.3365, 1.1292



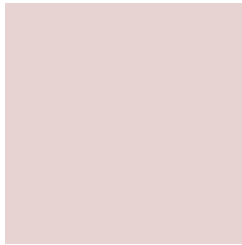
59.3808, -31.4733, -6.2791



16.1425, -8.5562, -1.7063

Previews

White Background



This preview shows how the HunterLab color 82.7330, 2.6440, 6.8607 looks on a white background.

Color Contrast Check

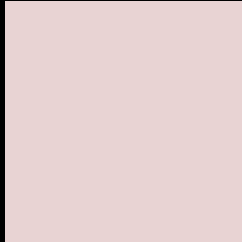
Large Text (above 18pt) WCAG AA × Fail

Any Text WCAG AA × Fail

Large Text (above 18pt) WCAG AAA × Fail

Any Text WCAG AAA × Fail

Black Background



This preview shows how the HunterLab color 82.7330, 2.6440, 6.8607 looks on a black background.

Color Contrast Check

Large Text (above 18pt) WCAG AA ✓ Pass

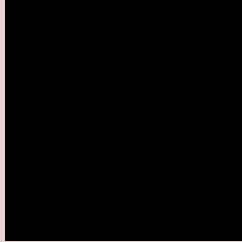
Any Text WCAG AA ✓ Pass

Large Text (above 18pt) WCAG AAA ✓ Pass

Any Text WCAG AAA ✓ Pass

If you want to check with other color combinations, try the [Color Contrast Checker](#).

HunterLab 82.7330, 2.6440, 6.8607 Background



This preview shows how black text looks on a background with the HunterLab color 82.7330, 2.6440, 6.8607.



This preview shows how white text looks on a background with the HunterLab color 82.7330, 2.6440,

6.8607.

Color Blindness Simulation

Color vision deficiency is a very complex topic, and I could not describe the different causes any better than Wikipedia does, so if you want to learn more, you should check out their [article about color blindness](#).

Dichromacy



Original Color

82.7330, 2.6440, 6.8607

Protanopia

82.8376, -3.1228, 5.9332

Deuteranopia

82.7534, 5.7803, 6.9390



Tritanopia

82.7826, 6.7639, 0.1098

Trichromacy



Original Color

82.7330, 2.6440, 6.8607

Protanomaly

82.8818, -1.4564, 6.4882

Deuteranomaly

82.8427, 4.5529, 7.0203

Tritanomaly

82.8155, 5.0216, 2.6428

Monochromacy



Original Color

82.7330, 2.6440, 6.8607

Achromatopsia

83.2990, -4.4446, 4.5258

Achromatomaly

83.0884, -2.1327, 5.2854

CSS Examples

Text

The CSS property to change the color of the text to HunterLab 82.7330, 2.6440, 6.8607 is called "color". The color property can be set on classes, ids or directly on the HTML element.

This example shows how text in the color `rgb(232, 211, 211)` looks like.

```
.text, #text, p{  
    color:rgb(232, 211, 211)  
}
```

If you want to add a text shadow in that color use the text-shadow property, you can generate a text shadow directly with our [CSS Text Shadow Generator](#).

Here you see how black text with a 4 pixel rgb(232, 211, 211) colored shadow looks like.

```
.shadow{ text-shadow: 4px 4px 2px rgb(232, 211, 211) }
```

Border

The CSS property to change the border of an element to HunterLab 82.7330, 2.6440, 6.8607 is called "border".

The border property can be set on classes, ids or directly on the HTML element.

This example shows the color as border, it can be applied via the CSS property "border" or "border-color".

```
.border, #border, table{ border:4px solid rgb(232, 211, 211) }
```


If only the border color should be changed use the property `border-color`.

```
.border{ border-color:rgb(232, 211, 211) }
```

If you want to add a box shadow in that color use:

Here you see how a box with a 4 pixel `rgb(232, 211, 211)` colored shadow looks like.

```
.boxshadow{ -moz-box-shadow:4px 4px 4px  
4px rgb(232, 211, 211); -webkit-box-  
shadow:4px 4px 4px 4px rgb(232, 211, 211);  
box-shadow:4px 4px 4px 4px rgb(232, 211,  
211) }
```

Background

The CSS property to change the background color of an element to HunterLab 82.7330, 2.6440, 6.8607 is called "background". The background property can be set on classes, ids or directly on the HTML element.

```
.background, #background, body{  
background: rgb(232, 211, 211) }
```

If only the background color should be changed can be used:

```
.background{ background-color: rgb(232,  
211, 211) }
```

This example shows the color as background, it is applied via the CSS property "background".

To optimize and compress your CSS code, you can use our [online CSS compressor and optimizer](#) based on csstidy. If you want to create a linear or radial gradient as background or border, check our [CSS Gradient Generator](#).

Hey! You found this booklet interesting? Support Converting Colors with the new Membership Option!

The pro membership hides all ads, plus gives you double the colors in the color bucket, and more awesome pro features!

[Learn more, Memberships starting at \\$2.50/m!](#)

**Follow me
on Twitter!**

@ConvertingColor