

Converting Colors

HunterLab(82.7950, 3.6780,
8.3483)

Have a look what the booklet for
HunterLab(82.7950, 3.6780, 8.3483)
contains.

HunterLab(82.6495, 3.7205, 8.1849)	3
<i>Conversions</i>	4
<i>Details</i>	6
<i>Harmonies</i>	12
<i>Previews</i>	24
<i>Color Blindness Simulation</i>	28
<i>CSS Examples</i>	31

Color

**HunterLab(82.6495, 3.7205,
8.1849)**

Conversions

Conversions Part 1

Format	Color
Hex	EBD2D0
RGB	235, 210, 208
RGB Percent	92%, 82%, 82%
CMY	0.0784, 0.1764, 0.1843
CMYK	0.00, 0.11, 0.11, 0.08
HSL	4°, 40%, 87%
HSV	4°, 11%, 92%
XYZ	68.6927, 68.3094, 69.2390
YIQ	217.2470, 15.5420, 4.6780

Conversions

Conversions Part 2

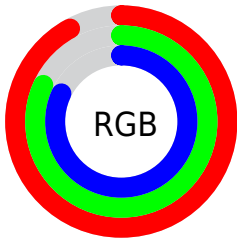
Format	Color
R _Y B	235, 210, 208
Decimal	15454928
CIE Lab	86.16, 8.35, 4.15
CIE LCh	86, 9.330, 26.444
Yxy	68.3124, 0.3331, 0.3312
Android (android.graphics.Color)	4293645008 (0xFFEBD2D0)
YUV	217.2470, -4.5588, 15.5694
Hunter-Lab	82.6495, 3.7205, 8.1849

Details

The HunterLab color $82.6495, 3.7205, 8.1849$ is a light color, and the websafe version is hex $FFCCCC$. A complement of this color would be $88.1387, -12.1811, 1.2253$, and the grayscale version is $83.4218, -4.4512, 4.5325$.

A 20% lighter version of the original color is $100.0000, -5.3358, 5.4332$, and $59.7442, 3.9371, 6.5436$ is the 20% darker color. If you saturate the color by 10%, you get $75.6422, 11.5790, 11.0525$, and if you desaturate by 10%, it is $90.0217, -3.7767, 5.3675$.

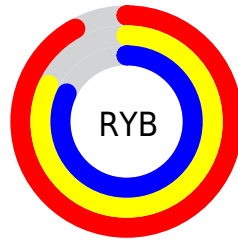
Distribution



Red (92%)

Green (82%)

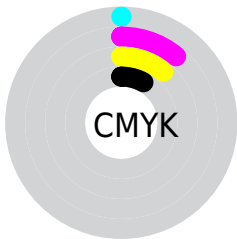
Blue (82%)



Red (92%)

Yellow (82%)

Blue (82%)

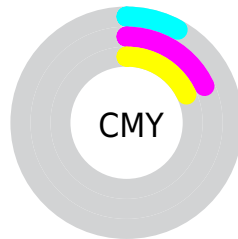


Cyan (0%)

Magenta (11%)

Yellow (11%)

Black (8%)



Cyan (8%)

Magenta (18%)

Yellow (18%)

Brightness & Saturation Gradients

These gradients show how the HunterLab color 82.6495, 3.7205, 8.1849 changes by changing the brightness by 10 percent. The first figure shows a shift by +10% for each color and the second figure -10%.

Similar to the brightness gradients but the following saturation gradients show a change of the HunterLab color 82.6495, 3.7205, 8.1849 by changing the saturation by 10% instead.

82.6495, 3.7205,
8.1849

82.6495, 3.7205,
8.1849

213.2140, -0.3325,
16.7194

70.8180, 3.9577,
7.3480

108.0736, 3.0934,
9.9306

59.6105, 4.1429,
6.5324

121.6116, 2.7150,
10.8362

49.0659, 4.2681,
5.7392

135.6720, 2.2963,
11.7638

39.2288, 4.3258,
4.9678

150.2361, 1.8395,
12.7130

30.1543, 4.3062,
4.2166

165.2869, 1.3467,
13.6836

21.9130, 4.1955,
3.4823

180.8092, 0.8194,

14.5994, 3.9731,

14.6750

2.7584

196.7892, 0.2592,
15.6871

■ 8.2597, 3.9668,
2.5347

0.0000, NaN, NaN

■ 82.6495, 3.7205,
8.1849

■ 82.6495, 3.7205,
8.1849

■ 75.6422, 11.5790,
11.0525

■ 90.0217, -3.7767,
5.3675

■ 69.0566, 19.8195,
13.9493

■ 97.7035, -10.9398,
2.6015

■ 62.9714, 28.4080,
16.8388

■ 98.1847, -11.7094,
3.1659

■ 57.4795, 37.2291,
19.6490

■ 52.6884, 46.0326,
22.2612

■ 48.7112, 54.3875,
24.5042

■ 45.6487, 61.6885,
26.1770

■ 43.5571, 67.2781,
27.1166

■ 42.5172, 70.3046,
27.4297

Harmonies

Analogous

The Analogous color harmony consists of three colors that are next to each other on the color wheel.



82.6513, 4.6706, 3.9713



82.6495, 3.7205, 8.1849



82.6513, 0.5700, 11.2572

Triad

The Triadic color harmony groups three colors that are evenly spaced from another and form a triangle on the color wheel.



82.6513, 3.7181, 8.1862



82.6513, -11.7116, 9.0496



82.6513, -4.9666, -4.4185

Complementary

The Complementary color scheme is a pair of colors which are on the opposite of each other on the color wheel.



82.6495, 3.7205, 8.1849



88.1387, -12.1811, 1.2253

Split Complementary

Split-complementary colors differ from the complementary color scheme. The scheme consists of three colors, the original color and two neighbors of the complement color.



82.6513, -9.2836, -2.8830



82.6495, 3.7205, 8.1849



82.6513, -13.1234, 5.0231

Square

The Square scheme is like the rectangle color scheme, but the four colors are evenly spaced on the color wheel.



82.6513, 3.7181, 8.1862



82.6513, -8.3462, 11.7360



82.6513, -12.2443, 0.6335



82.6513, -0.4079, -3.4582

Rectangle

The Rectangle color scheme consists of four colors that form a rectangle on the color wheel.



82.6495, 3.7205, 8.1849



82.6513, -2.3150, 12.3241



82.6513, -12.2443, 0.6335



82.6513, -6.4933, -4.1751

Sweetspot

The Sweet Spot groups the original color and five complimentary colors.



82.6513, 3.7181, 8.1862



97.5097, -2.9148, 6.3565



82.8670, 9.1142, -4.0431



44.8070, -1.0465, 3.0554

0.0000, NaN, NaN



46.2646, -2.4686, 2.5136

Same Dimension

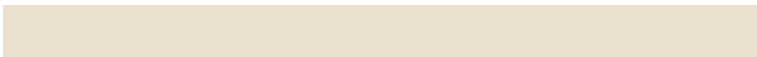
The Same Dimension uses a secret algorithm to generate beautiful new colors.



82.6513, 3.7181, 8.1862



88.6602, 6.2588, 9.7859



86.6908, -3.2213, 12.5485



39.0302, 1.0081, 3.5318



31.8261, 52.0870, 20.5230



9.2637, 13.4704, 5.9441

Inverse Universe

The Inverse Universe completely reimagines the original color for something new.



88.1387, -12.1811, 1.2253



96.0039, -15.0344, 0.4662



83.9273, -5.3887, -3.9038



41.1331, -5.0821, 0.8650



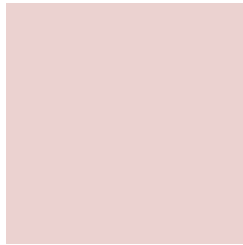
55.8568, -26.5614, -12.4778



15.8340, -7.6675, -3.2392

Previews

White Background



This preview shows how the HunterLab color 82.6495, 3.7205, 8.1849 looks on a white background.

Color Contrast Check

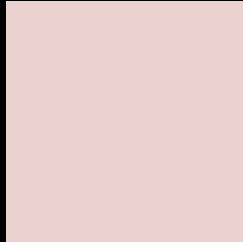
Large Text (above 18pt) WCAG AA × Fail

Any Text WCAG AA × Fail

Large Text (above 18pt) WCAG AAA × Fail

Any Text WCAG AAA × Fail

Black Background



This preview shows how the HunterLab color 82.6495, 3.7205, 8.1849 looks on a black background.

Color Contrast Check

Large Text (above 18pt) WCAG AA ✓ Pass

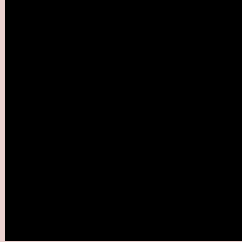
Any Text WCAG AA ✓ Pass

Large Text (above 18pt) WCAG AAA ✓ Pass

Any Text WCAG AAA ✓ Pass

If you want to check with other color combinations, try the [Color Contrast Checker](#).

HunterLab 82.6495, 3.7205, 8.1849 Background



This preview shows how black text looks on a background with the HunterLab color 82.6495, 3.7205, 8.1849.



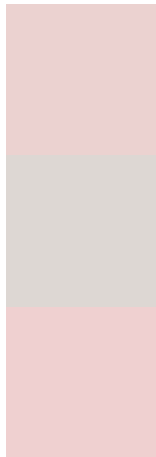
This preview shows how white text looks on a background with the HunterLab color 82.6495, 3.7205,

8.1849.

Color Blindness Simulation

Color vision deficiency is a very complex topic, and I could not describe the different causes any better than Wikipedia does, so if you want to learn more, you should check out their [article about color blindness](#).

Dichromacy



Original Color

82.6495, 3.7205, 8.1849

Protanopia

82.8711, -3.1286, 6.9183

Deuteranopia

82.4721, 6.1788, 8.0265



Tritanopia

82.7636, 8.1535, 0.6216

Trichromacy



Original Color

82.6495, 3.7205, 8.1849

Protanomaly

82.7106, -0.5997, 7.2478

Deuteranomaly

82.6633, 5.2974, 8.2281

Tritanomaly

82.7622, 6.2433, 3.5890

Monochromacy



Original Color

82.6495, 3.7205, 8.1849

Achromatopsia

83.2990, -4.4446, 4.5258

Achromatomaly

82.9430, -1.1232, 5.6133

CSS Examples

Text

The CSS property to change the color of the text to HunterLab 82.6495, 3.7205, 8.1849 is called "color". The color property can be set on classes, ids or directly on the HTML element.

This example shows how text in the color `rgb(235, 210, 208)` looks like.

```
.text, #text, p{  
    color:rgb(235, 210, 208)  
}
```

If you want to add a text shadow in that color use the text-shadow property, you can generate a text shadow directly with our [CSS Text Shadow Generator](#).

Here you see how black text with a 4 pixel rgb(235, 210, 208) colored shadow looks like.

```
.shadow{ text-shadow: 4px 4px 2px rgb(235, 210, 208) }
```

Border

The CSS property to change the border of an element to HunterLab 82.6495, 3.7205, 8.1849 is called "border". The border property can be set on classes, ids or directly on the HTML element.

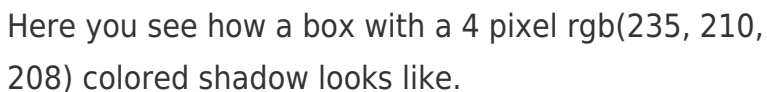
This example shows the color as border, it can be applied via the CSS property "border" or "border-color".

```
.border, #border, table{ border:4px solid rgb(235, 210, 208) }
```


If only the border color should be changed use the property `border-color`.

```
.border{ border-color:rgb(235, 210, 208) }
```

If you want to add a box shadow in that color use:



Here you see how a box with a 4 pixel `rgb(235, 210, 208)` colored shadow looks like.

```
.boxshadow{ -moz-box-shadow:4px 4px 4px 4px rgb(235, 210, 208); -webkit-box-shadow:4px 4px 4px 4px rgb(235, 210, 208); box-shadow:4px 4px 4px 4px rgb(235, 210, 208) }
```

Background

The CSS property to change the background color of an element to HunterLab 82.6495, 3.7205, 8.1849 is called "background". The background property can be set on classes, ids or directly on the HTML element.

```
.background, #background, body{  
background: rgb(235, 210, 208) }
```

If only the background color should be changed can be used:

```
.background{ background-color: rgb(235,  
210, 208) }
```

This example shows the color as background, it is applied via the CSS property "background".

To optimize and compress your CSS code, you can use our [online CSS compressor and optimizer](#) based on csstidy. If you want to create a linear or radial gradient as background or border, check our [CSS Gradient Generator](#).

Hey! You found this booklet interesting? Support Converting Colors with the new Membership Option!

The pro membership hides all ads, plus gives you double the colors in the color bucket, and more awesome pro features!

[Learn more, Memberships starting at \\$2.50/m!](#)

**Follow me
on Twitter!**

@ConvertingColor