

Converting Colors

HunterLab(82.8925, 4.5575,
4.8023)

Have a look what the booklet for
HunterLab(82.8925, 4.5575, 4.8023)
contains.

HunterLab(82.7910, 4.6860, 4.5728)	3
<i>Conversions</i>	4
<i>Details</i>	6
<i>Harmonies</i>	12
<i>Previews</i>	24
<i>Color Blindness Simulation</i>	28
<i>CSS Examples</i>	31

Color

**HunterLab(82.7910, 4.6860,
4.5728)**

Conversions

Conversions Part 1

Format	Color
Hex	EAD2D8
RGB	234, 210, 216
RGB Percent	92%, 82%, 85%
CMY	0.0823, 0.1764, 0.1529
CMYK	0.00, 0.10, 0.08, 0.08
HSL	345°, 36%, 87%
HSV	345°, 10%, 92%
XYZ	69.3729, 68.5435, 74.5397
YIQ	217.8600, 12.3780, 6.9540

Conversions

Conversions Part 2

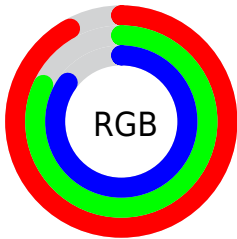
Format	Color
RYB	234, 210, 216
Decimal	15389400
CIELab	86.28, 9.33, 0.07
CIElCh	86, 9.328, 0.457
Yxy	68.5465, 0.3265, 0.3226
Android (android.graphics.Color)	4293579480 (0xFFEAD2D8)
YUV	217.8600, -0.9170, 14.1548
Hunter-Lab	82.7910, 4.6860, 4.5728

Details

The HunterLab color $82.7910, 4.6860, 4.5728$ is a light color, and the websafe version is hex `CCCCCC`. A complement of this color would be $88.4027, -13.3481, 5.0100$, and the grayscale version is $83.6728, -4.4646, 4.5461$.

A 20% lighter version of the original color is $100.0000, -5.3358, 5.4332$, and $59.8457, 4.6790, 3.5535$ is the 20% darker color. If you saturate the color by 10%, you get $75.4745, 14.2294, 4.5732$, and if you desaturate by 10%, it is $90.5071, -4.6069, 4.9158$.

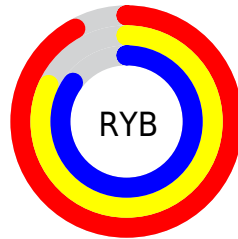
Distribution



Red (92%)

Green (82%)

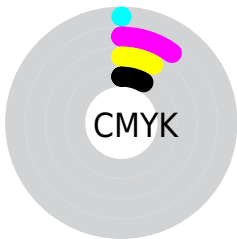
Blue (85%)



Red (92%)

Yellow (82%)

Blue (85%)

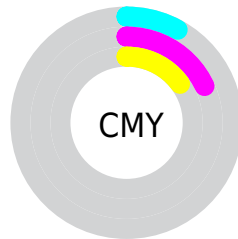


Cyan (0%)

Magenta (10%)

Yellow (8%)

Black (8%)



Cyan (8%)

Magenta (18%)

Yellow (15%)

Brightness & Saturation Gradients

These gradients show how the HunterLab color 82.7910, 4.6860, 4.5728 changes by changing the brightness by 10 percent. The first figure shows a shift by +10% for each color and the second figure -10%.

Similar to the brightness gradients but the following saturation gradients show a change of the HunterLab color 82.7910, 4.6860, 4.5728 by changing the saturation by 10% instead.

82.7910, 4.6860,
4.5728

82.7910, 4.6860,
4.5728

213.4080, 0.9643,
11.7090

70.9524, 4.8792,
3.9263

108.2283, 4.1416,
5.9650

59.7374, 5.0182,
3.3123

121.7725, 3.8022,
6.7052

49.1848, 5.0946,
2.7340

135.8389, 3.4211,
7.4738

39.3392, 5.1006,
2.1940

150.4087, 3.0008,
8.2696

30.2555, 5.0258,
1.6952

165.4651, 2.5432,
9.0918

22.0039, 4.8555,
1.2411

180.9929, 2.0502,

14.6789, 4.5680,

9.9396

0.8369

196.9781, 1.5235,
10.8123

■ 8.3374, 4.4481,
0.4908

0.0000, NaN, NaN

■ 82.7910, 4.6860,
4.5728

■ 82.7910, 4.6860,
4.5728

■ 75.4745, 14.2294,
4.5732

■ 90.5071, -4.6069,
4.9158

■ 68.6235, 24.0007,
4.9839

■ 97.9716, -12.7187,
4.8609

■ 62.3286, 33.8979,
5.8856

■ 98.0982, -12.0161,
3.0569

■ 56.6973, 43.7007,
7.3535

■ 51.8526, 53.0101,
9.4345

■ 47.9212, 61.2193,
12.1065

■ 45.0059, 67.5853,
15.2327

■ 43.1435, 71.4761,
18.5450

■ 42.1935, 72.9931,
21.5635

Harmonies

Analogous

The Analogous color harmony consists of three colors that are next to each other on the color wheel.



82.7928, 3.4784, 0.2145



82.7910, 4.6860, 4.5728



82.7928, 3.4048, 8.6916

Triad

The Triadic color harmony groups three colors that are evenly spaced from another and form a triangle on the color wheel.



82.7928, 4.6837, 4.5742



82.7928, -8.8932, 11.4896



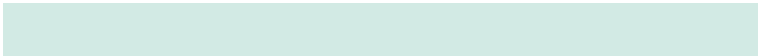
82.7928, -8.7727, -3.2170

Complementary

The Complementary color scheme is a pair of colors which are on the opposite of each other on the color wheel.



82.7910, 4.6860, 4.5728



88.4027, -13.3481, 5.0100

Split Complementary

Split-complementary colors differ from the complementary color scheme. The scheme consists of three colors, the original color and two neighbors of the complement color.



82.7928, -11.9685, 0.0911



82.7910, 4.6860, 4.5728



82.7928, -12.0370, 8.5806

Square

The Square scheme is like the rectangle color scheme, but the four colors are evenly spaced on the color wheel.



82.7928, 4.6837, 4.5742



82.7928, -4.4931, 12.5473



82.7928, -13.1505, 4.4390



82.7928, -4.3510, -4.4312

Rectangle

The Rectangle color scheme consists of four colors that form a rectangle on the color wheel.



82.7910, 4.6860, 4.5728



82.7928, 1.3313, 10.7840



82.7928, -13.1505, 4.4390



82.7928, -10.0225, -2.3043

Sweetspot

The Sweet Spot groups the original color and five complimentary colors.



82.7928, 4.6837, 4.5742



97.3918, -2.2804, 5.2819



82.7834, 5.8388, -4.6385



44.7382, -0.6753, 2.4272

0.0000, NaN, NaN



46.2646, -2.4686, 2.5136

Same Dimension

The Same Dimension uses a secret algorithm to generate beautiful new colors.



82.7928, 4.6837, 4.5742



89.7861, 7.0390, 5.0127



84.4157, 0.5494, 9.1989



38.8790, 1.8385, 2.1399



31.6562, 54.8165, 15.7706



8.9550, 15.6713, 3.1852

Inverse Universe

The Inverse Universe completely reimagines the original color for something new.



82.7928, 4.6837, 4.5742



89.7861, 7.0390, 5.0127



86.6782, -9.2310, 0.0028



38.8790, 1.8385, 2.1399



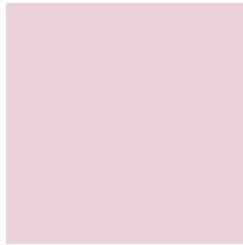
31.6562, 54.8165, 15.7706



8.9550, 15.6713, 3.1852

Previews

White Background



This preview shows how the HunterLab color 82.7910, 4.6860, 4.5728 looks on a white background.

Color Contrast Check

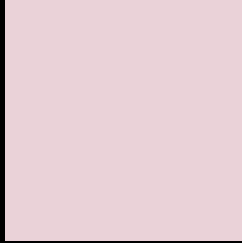
Large Text (above 18pt) WCAG AA × Fail

Any Text WCAG AA × Fail

Large Text (above 18pt) WCAG AAA × Fail

Any Text WCAG AAA × Fail

Black Background



This preview shows how the HunterLab color 82.7910, 4.6860, 4.5728 looks on a black background.

Color Contrast Check

Large Text (above 18pt) WCAG AA ✓ Pass

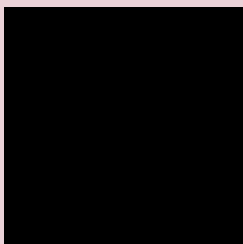
Any Text WCAG AA ✓ Pass

Large Text (above 18pt) WCAG AAA ✓ Pass

Any Text WCAG AAA ✓ Pass

If you want to check with other color combinations, try the [Color Contrast Checker](#).

HunterLab 82.7910, 4.6860, 4.5728 Background



This preview shows how black text looks on a background with the HunterLab color 82.7910, 4.6860, 4.5728.



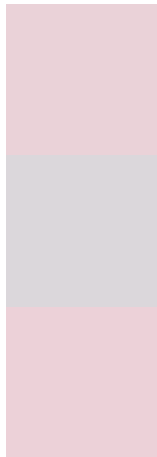
This preview shows how white text looks on a background with the HunterLab color 82.7910, 4.6860,

4.5728.

Color Blindness Simulation

Color vision deficiency is a very complex topic, and I could not describe the different causes any better than Wikipedia does, so if you want to learn more, you should check out their [article about color blindness](#).

Dichromacy



Original Color

82.7910, 4.6860, 4.5728

Protanopia

82.9309, -2.4254, 3.1460

Deuteranopia

82.6993, 5.9066, 4.4861



Tritanopia

82.8851, 7.1062, 0.2420

Trichromacy



Original Color

82.7910, 4.6860, 4.5728

Protanomaly

82.7634, 0.0754, 3.4825

Deuteranomaly

82.5960, 5.5601, 4.3581

Tritanomaly

82.7871, 6.5828, 1.6354

Monochromacy



Original Color

82.7910, 4.6860, 4.5728

Achromatopsia

83.7318, -4.4677, 4.5493

Achromatomaly

83.3414, -1.1367, 4.6337

CSS Examples

Text

The CSS property to change the color of the text to HunterLab 82.7910, 4.6860, 4.5728 is called "color". The color property can be set on classes, ids or directly on the HTML element.

This example shows how text in the color `rgb(234, 210, 216)` looks like.

```
.text, #text, p{  
  color:rgb(234, 210, 216)  
}
```

If you want to add a text shadow in that color use the text-shadow property, you can generate a text shadow directly with our [CSS Text Shadow Generator](#).

Here you see how black text with a 4 pixel rgb(234, 210, 216) colored shadow looks like.

```
.shadow{ text-shadow: 4px 4px 2px rgb(234, 210, 216) }
```

Border

The CSS property to change the border of an element to HunterLab 82.7910, 4.6860, 4.5728 is called "border". The border property can be set on classes, ids or directly on the HTML element.

This example shows the color as border, it can be applied via the CSS property "border" or "border-color".

```
.border, #border, table{ border:4px solid rgb(234, 210, 216) }
```


If only the border color should be changed use the property `border-color`.

```
.border{ border-color:rgb(234, 210, 216) }
```

If you want to add a box shadow in that color use:

Here you see how a box with a 4 pixel `rgb(234, 210, 216)` colored shadow looks like.

```
.boxshadow{ -moz-box-shadow:4px 4px 4px  
4px rgb(234, 210, 216); -webkit-box-  
shadow:4px 4px 4px 4px rgb(234, 210, 216);  
box-shadow:4px 4px 4px 4px rgb(234, 210,  
216) }
```

Background

The CSS property to change the background color of an element to HunterLab 82.7910, 4.6860, 4.5728 is called "background". The background property can be set on classes, ids or directly on the HTML element.

```
.background, #background, body{  
background: rgb(234, 210, 216) }
```

If only the background color should be changed can be used:

```
.background{ background-color: rgb(234,  
210, 216) }
```

This example shows the color as background, it is applied via the CSS property "background".

To optimize and compress your CSS code, you can use our [online CSS compressor and optimizer](#) based on csstidy. If you want to create a linear or radial gradient as background or border, check our [CSS Gradient Generator](#).

Hey! You found this booklet interesting? Support Converting Colors with the new Membership Option!

The pro membership hides all ads, plus gives you double the colors in the color bucket, and more awesome pro features!

[Learn more, Memberships starting at \\$2.50/m!](#)

**Follow me
on Twitter!**

@ConvertingColor