

# Converting Colors

HunterLab(82.9094, 2.7262,  
9.1735)

Have a look what the booklet for  
HunterLab(82.9094, 2.7262, 9.1735)  
contains.

<b>HunterLab(82.8896, 2.8772, 9.3591)</b> .....	3
<b><i>Conversions</i></b> .....	4
<b><i>Details</i></b> .....	6
<b><i>Harmonies</i></b> .....	12
<b><i>Previews</i></b> .....	24
<b><i>Color Blindness Simulation</i></b> .....	28
<b><i>CSS Examples</i></b> .....	31

# Color

**HunterLab(82.8896, 2.8772,  
9.3591)**

# Conversions

## Conversions Part 1

<b>Format</b>	<b>Color</b>
Hex	EBD3CE
RGB	235, 211, 206
RGB Percent	92%, 83%, 81%
CMY	0.0784, 0.1725, 0.1922
CMYK	0.00, 0.10, 0.12, 0.08
HSL	10°, 42%, 86%
HSV	10°, 12%, 92%
XYZ	68.6957, 68.7069, 68.0335
YIQ	217.6060, 15.9090, 3.5330

# Conversions

## Conversions Part 2

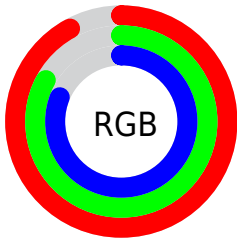
<b>Format</b>	<b>Color</b>
R <sub>Y</sub> B	235, 212, 206
Decimal	15455182
CIE Lab	86.36, 7.51, 5.50
CIE LCh	86, 9.307, 36.224
Yxy	68.7099, 0.3344, 0.3344
Android (android.graphics.Color)	4293645262 (0xFFEBD3CE)
YUV	217.6060, -5.7218, 15.2545
Hunter-Lab	82.8896, 2.8772, 9.3591

# Details

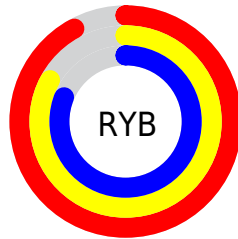
The HunterLab color  $82.8896, 2.8772, 9.3591$  is a light color, and the websafe version is hex `CCCCCC`. A complement of this color would be  $87.0127, -11.2461, -0.1363$ , and the grayscale version is  $83.5819, -4.4597, 4.5412$ .

A 20% lighter version of the original color is  $100.0000, -5.3358, 5.4332$ , and  $59.6889, 3.6404, 7.3365$  is the 20% darker color. If you saturate the color by 10%, you get  $76.5291, 9.5426, 12.8264$ , and if you desaturate by 10%, it is  $89.5501, -3.4349, 5.7971$ .

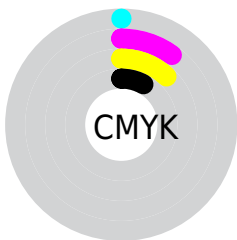
# Distribution



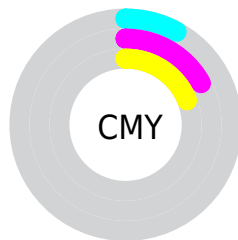
- Red (92%)
- Green (83%)
- Blue (81%)



- Red (92%)
- Yellow (83%)
- Blue (81%)



- Cyan (0%)
- Magenta (10%)
- Yellow (12%)
- Black (8%)



- Cyan (8%)
- Magenta (17%)
- Yellow (19%)

# Brightness & Saturation Gradients

These gradients show how the HunterLab color 82.8896, 2.8772, 9.3591 changes by changing the brightness by 10 percent. The first figure shows a shift by +10% for each color and the second figure -10%.

Similar to the brightness gradients but the following saturation gradients show a change of the HunterLab color 82.8896, 2.8772, 9.3591 by changing the saturation by 10% instead.



82.8896, 2.8772,  
9.3591

82.8896, 2.8772,  
9.3591

213.5432, -1.4745,  
18.3686

71.0461, 3.1543,  
8.4570

108.3361, 2.1753,  
11.2253

59.8259, 3.3816,  
7.5724

121.8847, 1.7617,  
12.1873

49.2677, 3.5512,  
6.7053

135.9552, 1.3091,  
13.1689

39.4162, 3.6563,  
5.8539

150.5290, 0.8195,  
14.1702

30.3260, 3.6877,  
5.0152

165.5893, 0.2948,  
15.1910

22.0673, 3.6323,  
4.1832

181.1209, -0.2633,

14.7343, 3.4708,

16.2312

3.3467

197.1097, -0.8535,  
17.2904

■ 8.3911, 3.4515,  
3.1735

0.0000, NaN, NaN

■ 82.8896, 2.8772,  
9.3591

■ 82.8896, 2.8772,  
9.3591

■ 76.5291, 9.5426,  
12.8264

■ 89.5501, -3.4349,  
5.7971

■ 70.5086, 16.5923,  
16.1552

■ 96.4679, -9.4212,  
2.1626

■ 64.8850, 24.0223,  
19.2878

■ 98.1847, -11.7094,  
3.1659

■ 59.7237, 31.7845,  
22.1397

■ 55.1004, 39.7524,  
24.5965

■ 51.0972, 47.6866,  
26.5177

■ 47.7947, 55.2126,  
27.7579

■ 45.2559, 61.8400,  
28.2193

■ 43.8376, 65.9567,  
28.1672

# Harmonies

## Analogous

The Analogous color harmony consists of three colors that are next to each other on the color wheel.



82.8914, 4.6064, 5.4245



82.8896, 2.8772, 9.3591



82.8914, -0.8088, 11.8913

# Triad

The Triadic color harmony groups three colors that are evenly spaced from another and form a triangle on the color wheel.



82.8914, 2.8748, 9.3604



82.8914, -12.4151, 7.8531



82.8914, -3.4604, -4.3527

# Complementary

The Complementary color scheme is a pair of colors which are on the opposite of each other on the color wheel.



82.8896, 2.8772, 9.3591



87.0127, -11.2461, -0.1363

# Split Complementary

Split-complementary colors differ from the complementary color scheme. The scheme consists of three colors, the original color and two neighbors of the complement color.



82.8914, -7.9848, -3.6150



82.8896, 2.8772, 9.3591



82.8914, -13.0900, 3.5890

# Square

The Square scheme is like the rectangle color scheme, but the four colors are evenly spaced on the color wheel.



82.8914, 2.8748, 9.3604



82.8914, -9.6210, 11.0550



82.8914, -11.4851, -0.6482



82.8914, 0.8975, -2.6121



# Rectangle

The Rectangle color scheme consists of four colors that form a rectangle on the color wheel.



82.8896, 2.8772, 9.3591



82.8914, -3.8404, 12.5226



82.8914, -11.4851, -0.6482



82.8914, -5.0126, -4.3876

# Sweetspot

The Sweet Spot groups the original color and five complimentary colors.



82.8914, 2.8748, 9.3604



97.0016, -2.6331, 7.0221



82.1755, 9.6342, -3.2982



44.6189, -0.9801, 3.3863

0.0000, NaN, NaN



46.2646, -2.4686, 2.5136

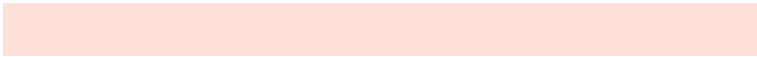


# Same Dimension

The Same Dimension uses a secret algorithm to generate beautiful new colors.



82.8914, 2.8748, 9.3604



89.0054, 5.1081, 11.3184



87.2640, -4.5803, 14.0171



39.3371, 0.4758, 3.8719



32.8975, 48.5831, 21.1218



9.8614, 11.6601, 6.2807

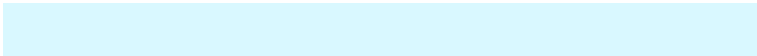


# Inverse Universe

The Inverse Universe completely reimagines the original color for something new.



87.0127, -11.2461, -0.1363



94.5062, -13.7531, -1.3602



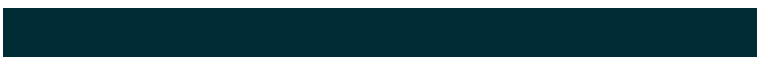
82.4997, -3.9098, -5.7185



40.8091, -4.5646, 0.4807



50.0897, -19.1595, -21.2480

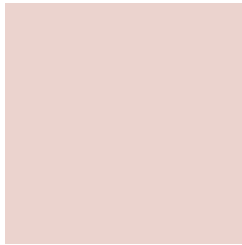


14.4452, -5.9084, -5.3007



# Previews

## White Background



This preview shows how the HunterLab color 82.8896, 2.8772, 9.3591 looks on a white background.

## Color Contrast Check

Large Text (above 18pt) WCAG AA × Fail

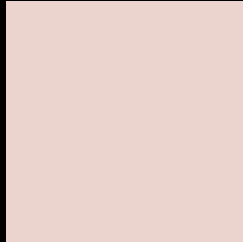
Any Text WCAG AA × Fail

Large Text (above 18pt) WCAG AAA × Fail

Any Text WCAG AAA × Fail



# Black Background



This preview shows how the HunterLab color 82.8896, 2.8772, 9.3591 looks on a black background.

## Color Contrast Check

Large Text (above 18pt) WCAG AA ✓ Pass

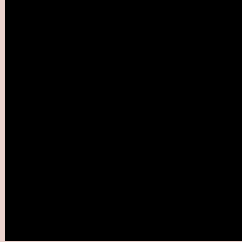
Any Text WCAG AA ✓ Pass

Large Text (above 18pt) WCAG AAA ✓ Pass

Any Text WCAG AAA ✓ Pass

If you want to check with other color combinations, try the [Color Contrast Checker](#).

# HunterLab 82.8896, 2.8772, 9.3591 Background



This preview shows how black text looks on a background with the HunterLab color 82.8896, 2.8772, 9.3591.



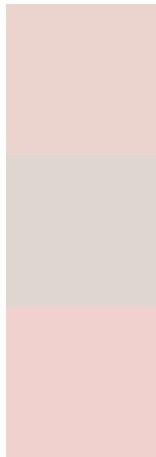
This preview shows how white text looks on a background with the HunterLab color 82.8896, 2.8772,

9.3591.

# Color Blindness Simulation

Color vision deficiency is a very complex topic, and I could not describe the different causes any better than Wikipedia does, so if you want to learn more, you should check out their [article about color blindness](#).

## Dichromacy



### Original Color

82.8896, 2.8772, 9.3591

### Protanopia

82.8761, -3.2910, 8.3188

### Deuteranopia

82.9204, 6.0424, 9.4489



## Tritanopia

82.7636, 8.1535, 0.6216

# Trichromacy



## Original Color

82.8896, 2.8772, 9.3591

## Protanomaly

83.0235, -1.2682, 8.9800

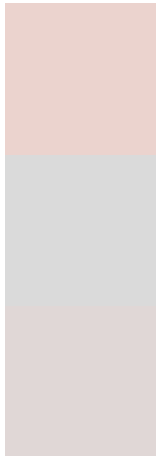
## Deuteranomaly

83.0061, 4.8054, 9.5232

## Tritanomaly

82.7306, 6.0745, 4.0387

# Monochromacy



## Original Color

82.8896, 2.8772, 9.3591

## Achromatopsia

83.7318, -4.4677, 4.5493

## Achromatomaly

83.2485, -1.6421, 5.9594

# CSS Examples

## Text

The CSS property to change the color of the text to HunterLab 82.8896, 2.8772, 9.3591 is called "color". The color property can be set on classes, ids or directly on the HTML element.

This example shows how text in the color `rgb(235, 211, 206)` looks like.

```
.text, #text, p{  
    color:rgb(235, 211, 206)  
}
```

If you want to add a text shadow in that color use the text-shadow property, you can generate a text shadow directly with our [CSS Text Shadow Generator](#).

Here you see how black text with a 4 pixel rgb(235, 211, 206) colored shadow looks like.

```
.shadow{ text-shadow: 4px 4px 2px rgb(235, 211, 206) }
```

## Border

The CSS property to change the border of an element to HunterLab 82.8896, 2.8772, 9.3591 is called "border".

The border property can be set on classes, ids or directly on the HTML element.

This example shows the color as border, it can be applied via the CSS property "border" or "border-color".

```
.border, #border, table{ border:4px solid rgb(235, 211, 206) }
```



If only the border color should be changed use the property border-color.

```
.border{ border-color:rgb(235, 211, 206) }
```

If you want to add a box shadow in that color use:

Here you see how a box with a 4 pixel rgb(235, 211, 206) colored shadow looks like.

```
.boxshadow{ -moz-box-shadow:4px 4px 4px  
4px rgb(235, 211, 206); -webkit-box-  
shadow:4px 4px 4px 4px rgb(235, 211, 206);  
box-shadow:4px 4px 4px 4px rgb(235, 211,  
206) }
```

# Background

The CSS property to change the background color of an element to HunterLab 82.8896, 2.8772, 9.3591 is called "background". The background property can be set on classes, ids or directly on the HTML element.

```
.background, #background, body{  
background: rgb(235, 211, 206) }
```

If only the background color should be changed can be used:

```
.background{ background-color: rgb(235,  
211, 206) }
```

This example shows the color as background, it is applied via the CSS property "background".

To optimize and compress your CSS code, you can use our [online CSS compressor and optimizer](#) based on csstidy. If you want to create a linear or radial gradient as background or border, check our [CSS Gradient Generator](#).

Hey! You found this booklet interesting? Support Converting Colors with the new Membership Option!

The pro membership hides all ads, plus gives you double the colors in the color bucket, and more awesome pro features!

**[Learn more, Memberships starting at \\$2.50/m!](#)**

**Follow me  
on Twitter!**

@ConvertingColor