

Converting Colors

HunterLab(82.9485, 4.6574,
2.2975)

Have a look what the booklet for
HunterLab(82.9485, 4.6574, 2.2975)
contains.

HunterLab(83.0450, 4.3238, 2.4088)	3
<i>Conversions</i>	4
<i>Details</i>	6
<i>Harmonies</i>	12
<i>Previews</i>	24
<i>Color Blindness Simulation</i>	28
<i>CSS Examples</i>	31

Color

**HunterLab(83.0450, 4.3238,
2.4088)**

Conversions

Conversions Part 1

Format	Color
Hex	E8D3DD
RGB	232, 211, 221
RGB Percent	91%, 83%, 87%
CMY	0.0902, 0.1725, 0.1333
CMYK	0.00, 0.09, 0.05, 0.09
HSL	331°, 31%, 87%
HSV	331°, 9%, 91%
XYZ	69.6241, 68.9647, 78.0484
YIQ	218.4190, 9.3060, 7.5620

Conversions

Conversions Part 2

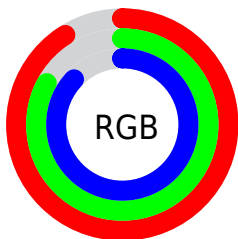
Format	Color
R _Y B	232, 211, 221
Decimal	15258589
CIE Lab	86.49, 8.97, -2.29
CIE LCh	86, 9.256, 345.685
Yxy	68.9677, 0.3214, 0.3183
Android (android.graphics.Color)	4293448669 (0xFFE8D3DD)
YUV	218.4190, 1.2724, 11.9105
Hunter-Lab	83.0450, 4.3238, 2.4088

Details

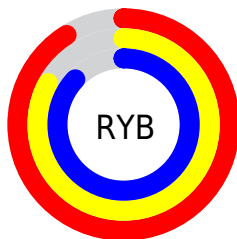
The HunterLab color $83.0450, 4.3238, 2.4088$ is a light color, and the websafe version is hex $CCCCCC$. A complement of this color would be $87.6572, -13.0798, 7.0393$, and the grayscale version is $83.9067, -4.4771, 4.5588$.

A 20% lighter version of the original color is $100.0000, -5.3358, 5.4332$, and $59.7998, 4.8263, 1.1641$ is the 20% darker color. If you saturate the color by 10%, you get $75.9178, 14.5902, 0.0037$, and if you desaturate by 10%, it is $90.5598, -5.7398, 5.1537$.

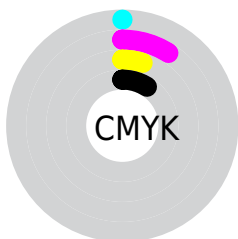
Distribution



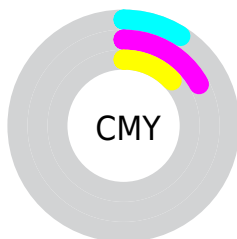
- Red (91%)
- Green (83%)
- Blue (87%)



- Red (91%)
- Yellow (83%)
- Blue (87%)



- Cyan (0%)
- Magenta (9%)
- Yellow (5%)
- Black (9%)



- Cyan (9%)
- Magenta (17%)
- Yellow (13%)

Brightness & Saturation Gradients

These gradients show how the HunterLab color 83.0450, 4.3238, 2.4088 changes by changing the brightness by 10 percent. The first figure shows a shift by +10% for each color and the second figure -10%.

Similar to the brightness gradients but the following saturation gradients show a change of the HunterLab color 83.0450, 4.3238, 2.4088 by changing the saturation by 10% instead.

83.0450, 4.3238,
2.4088

83.0450, 4.3238,
2.4088

213.7562, 0.4716,
8.7607

71.1937, 4.5346,
1.8678

108.5060, 3.7467,
3.6042

59.9653, 4.6921,
1.3650

122.0613, 3.3919,
4.2518

49.3984, 4.7880,
0.9047

136.1384, 2.9960,
4.9312

39.5374, 4.8149,
0.4907

150.7186, 2.5613,
5.6409

30.4371, 4.7625,
0.1280

165.7850, 2.0899,
6.3797

22.1673, 4.6166,
-0.1770

181.3225, 1.5834,

14.8217, 4.3562,

7.1465

-0.4146

197.3171, 1.0436,
7.9405

8.4751, 4.1888,
-0.6581

0.0000, NaN, NaN

83.0450, 4.3238,
2.4088

83.0450, 4.3238,
2.4088

75.9178, 14.5902,
0.0037

90.5598, -5.7398,
5.1537

69.2395, 25.0189,
-1.9712

97.6154, -14.3566,
7.2779

63.0941, 35.4879,
-3.3915

97.9265, -12.6257,
2.8402

57.5799, 45.7582,
-4.1057

■ 52.8084, 55.4219,
-3.9462

■ 48.8937, 63.8803,
-2.7643

■ 45.9292, 70.4130,
-0.4947

■ 43.9522, 74.3994,
2.7684

■ 42.8544, 75.8119,
6.6836

Harmonies

Analogous

The Analogous color harmony consists of three colors that are next to each other on the color wheel.



83.0468, 1.9970, -1.5834



83.0450, 4.3238, 2.4088



83.0468, 4.2645, 6.7661

Triad

The Triadic color harmony groups three colors that are evenly spaced from another and form a triangle on the color wheel.



83.0468, 4.3216, 2.4102



83.0468, -6.8165, 12.2297



83.0468, -10.5328, -1.7366

Complementary

The Complementary color scheme is a pair of colors which are on the opposite of each other on the color wheel.



83.0450, 4.3238, 2.4088



87.6572, -13.0798, 7.0393

Split Complementary

Split-complementary colors differ from the complementary color scheme. The scheme consists of three colors, the original color and two neighbors of the complement color.



83.0468, -12.7917, 2.2103



83.0450, 4.3238, 2.4088



83.0468, -10.6782, 10.1936

Square

The Square scheme is like the rectangle color scheme, but the four colors are evenly spaced on the color wheel.



83.0468, 4.3216, 2.4102



83.0468, -2.2344, 12.2767



83.0468, -12.8444, 6.5767



83.0468, -6.6141, -4.0645

Rectangle

The Rectangle color scheme consists of four colors that form a rectangle on the color wheel.



83.0450, 4.3238, 2.4088



83.0468, 2.8813, 9.2865



83.0468, -12.8444, 6.5767



83.0468, -11.5077, -0.5459

Sweetspot

The Sweet Spot groups the original color and five complimentary colors.



83.0468, 4.3216, 2.4102



97.4476, -1.9767, 4.4867



82.4159, 2.9206, -4.0870



44.7709, -0.4974, 1.9610

0.0000, NaN, NaN



46.2646, -2.4686, 2.5136

Same Dimension

The Same Dimension uses a secret algorithm to generate beautiful new colors.



83.0468, 4.3216, 2.4102



90.8186, 7.0873, 2.1124



82.8400, 2.4590, 6.9780



38.0548, 2.1743, 1.0609



31.9058, 56.6944, 4.6891



8.7803, 15.8009, -0.2522

Inverse Universe

The Inverse Universe completely reimagines the original color for something new.



83.0468, 4.3216, 2.4102



90.8186, 7.0873, 2.1124



87.8596, -11.1533, 2.4238



38.0548, 2.1743, 1.0609



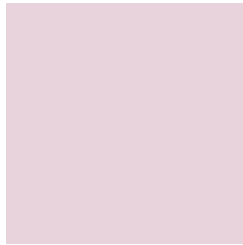
31.9058, 56.6944, 4.6891



8.7803, 15.8009, -0.2522

Previews

White Background



This preview shows how the HunterLab color 83.0450, 4.3238, 2.4088 looks on a white background.

Color Contrast Check

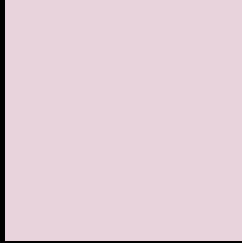
Large Text (above 18pt) WCAG AA × Fail

Any Text WCAG AA × Fail

Large Text (above 18pt) WCAG AAA × Fail

Any Text WCAG AAA × Fail

Black Background



This preview shows how the HunterLab color 83.0450, 4.3238, 2.4088 looks on a black background.

Color Contrast Check

Large Text (above 18pt) WCAG AA ✓ Pass

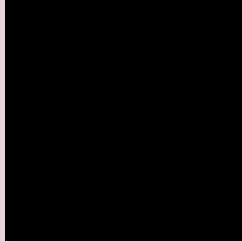
Any Text WCAG AA ✓ Pass

Large Text (above 18pt) WCAG AAA ✓ Pass

Any Text WCAG AAA ✓ Pass

If you want to check with other color combinations, try the [Color Contrast Checker](#).

HunterLab 83.0450, 4.3238, 2.4088 Background



This preview shows how black text looks on a background with the HunterLab color 83.0450, 4.3238, 2.4088.



This preview shows how white text looks on a background with the HunterLab color 83.0450, 4.3238,

2.4088.

Color Blindness Simulation

Color vision deficiency is a very complex topic, and I could not describe the different causes any better than Wikipedia does, so if you want to learn more, you should check out their [article about color blindness](#).

Dichromacy



Original Color

83.0450, 4.3238, 2.4088

Protanopia

82.9989, -1.8688, 0.7343

Deuteranopia

83.0517, 5.8790, 2.4440



Tritanopia

83.0439, 6.2449, -0.6051

Trichromacy



Original Color

83.0450, 4.3238, 2.4088

Protanomaly

83.1317, 0.0935, 1.4367

Deuteranomaly

82.9494, 5.5358, 2.3148

Tritanomaly

82.9777, 5.8909, 0.3348

Monochromacy



Original Color

83.0450, 4.3238, 2.4088

Achromatopsia

83.7318, -4.4677, 4.5493

Achromatomaly

83.3087, -1.1237, 3.6188

CSS Examples

Text

The CSS property to change the color of the text to HunterLab 83.0450, 4.3238, 2.4088 is called "color". The color property can be set on classes, ids or directly on the HTML element.

This example shows how text in the color `rgb(232, 211, 221)` looks like.

```
.text, #text, p{  
    color:rgb(232, 211, 221)  
}
```

If you want to add a text shadow in that color use the text-shadow property, you can generate a text shadow directly with our [CSS Text Shadow Generator](#).

Here you see how black text with a 4 pixel rgb(232, 211, 221) colored shadow looks like.

```
.shadow{ text-shadow: 4px 4px 2px rgb(232, 211, 221) }
```

Border

The CSS property to change the border of an element to HunterLab 83.0450, 4.3238, 2.4088 is called "border".

The border property can be set on classes, ids or directly on the HTML element.

This example shows the color as border, it can be applied via the CSS property "border" or "border-color".

```
.border, #border, table{ border:4px solid rgb(232, 211, 221) }
```


If only the border color should be changed use the property `border-color`.

```
.border{ border-color:rgb(232, 211, 221) }
```

If you want to add a box shadow in that color use:

Here you see how a box with a 4 pixel `rgb(232, 211, 221)` colored shadow looks like.

```
.boxshadow{ -moz-box-shadow:4px 4px 4px  
4px rgb(232, 211, 221); -webkit-box-  
shadow:4px 4px 4px 4px rgb(232, 211, 221);  
box-shadow:4px 4px 4px 4px rgb(232, 211,  
221) }
```

Background

The CSS property to change the background color of an element to HunterLab 83.0450, 4.3238, 2.4088 is called "background". The background property can be set on classes, ids or directly on the HTML element.

```
.background, #background, body{  
background: rgb(232, 211, 221) }
```

If only the background color should be changed can be used:

```
.background{ background-color: rgb(232,  
211, 221) }
```

This example shows the color as background, it is applied via the CSS property "background".

To optimize and compress your CSS code, you can use our [online CSS compressor and optimizer](#) based on csstidy. If you want to create a linear or radial gradient as background or border, check our [CSS Gradient Generator](#).

Hey! You found this booklet interesting? Support Converting Colors with the new Membership Option!

The pro membership hides all ads, plus gives you double the colors in the color bucket, and more awesome pro features!

[Learn more, Memberships starting at \\$2.50/m!](#)

**Follow me
on Twitter!**

@ConvertingColor