

Converting Colors

HunterLab(83.1093, 2.4977,
6.1804)

Have a look what the booklet for
HunterLab(83.1093, 2.4977, 6.1804)
contains.

HunterLab(83.0944, 2.4477, 6.3283)	3
<i>Conversions</i>	4
<i>Details</i>	6
<i>Harmonies</i>	12
<i>Previews</i>	24
<i>Color Blindness Simulation</i>	28
<i>CSS Examples</i>	31

Color

**HunterLab(83.0944, 2.4477,
6.3283)**

Conversions

Conversions Part 1

Format	Color
Hex	E8D4D5
RGB	232, 212, 213
RGB Percent	91%, 83%, 84%
CMY	0.0902, 0.1686, 0.1647
CMYK	0.00, 0.09, 0.08, 0.09
HSL	357°, 30%, 87%
HSV	357°, 9%, 91%
XYZ	68.8324, 69.0468, 72.6502
YIQ	218.0940, 11.5990, 4.5510

Conversions

Conversions Part 2

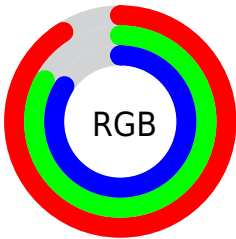
Format	Color
R _Y B	232, 212, 213
Decimal	15258837
CIE Lab	86.53, 7.08, 2.01
CIE LCh	87, 7.358, 15.829
Yxy	69.0498, 0.3269, 0.3280
Android (android.graphics.Color)	4293448917 (0xFFE8D4D5)
YUV	218.0940, -2.5113, 12.1956
Hunter-Lab	83.0944, 2.4477, 6.3283

Details

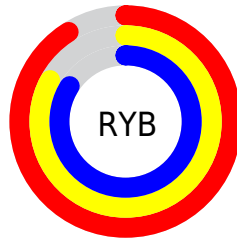
The HunterLab color $83.0944, 2.4477, 6.3283$ is a light color, and the websafe version is hex `CCCCCC`. A complement of this color would be $88.0236, -11.2098, 3.1182$, and the grayscale version is $83.7811, -4.4703, 4.5520$.

A 20% lighter version of the original color is $100.0000, -5.3358, 5.4332$, and $59.8437, 3.0501, 4.8803$ is the 20% darker color. If you saturate the color by 10%, you get $75.6486, 11.1584, 8.1978$, and if you desaturate by 10%, it is $90.9347, -5.9311, 4.6611$.

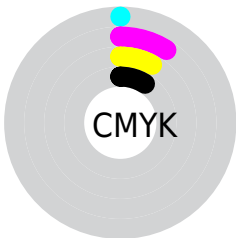
Distribution



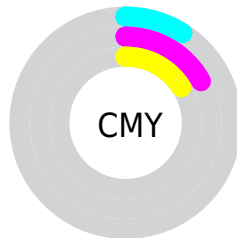
- Red (91%)
- Green (83%)
- Blue (84%)



- Red (91%)
- Yellow (83%)
- Blue (84%)



- Cyan (0%)
- Magenta (9%)
- Yellow (8%)
- Black (9%)



- Cyan (9%)
- Magenta (17%)
- Yellow (16%)

Brightness & Saturation Gradients

These gradients show how the HunterLab color 83.0944, 2.4477, 6.3283 changes by changing the brightness by 10 percent. The first figure shows a shift by +10% for each color and the second figure -10%.

Similar to the brightness gradients but the following saturation gradients show a change of the HunterLab color 83.0944, 2.4477, 6.3283 by changing the saturation by 10% instead.

83.0944, 2.4477,
6.3283

83.0944, 2.4477,
6.3283

213.8239, -2.0577,
14.1277

71.2406, 2.7456,
5.5919

108.5600, 1.7073,
7.8878

60.0096, 2.9946,
4.8828

122.1175, 1.2756,
8.7064

49.4399, 3.1873,
4.2034

136.1967, 0.8055,
9.5503

39.5760, 3.3169,
3.5547

150.7789, 0.2990,
10.4189

30.4725, 3.3747,
2.9378

165.8472, -0.2421,
11.3116

22.1992, 3.3481,
2.3532

181.3866, -0.8161,

14.8496, 3.2186,

12.2276

1.8011

197.3830, -1.4218,
13.1665

■ 8.5016, 3.1768,
1.4413

0.0000, NaN, NaN

■ 83.0944, 2.4477,
6.3283

■ 83.0944, 2.4477,
6.3283

■ 75.6486, 11.1584,
8.1978

■ 90.9347, -5.9311,
4.6611

■ 68.6632, 20.2119,
10.2891

■ 97.9265, -12.6258,
2.8402

■ 62.2296, 29.5522,
12.6150

■ 56.4576, 39.0182,
15.1588

■ 51.4757, 48.2752,
17.8514

■ 47.4189, 56.7636,
20.5450

■ 44.4028, 63.7363,
23.0080

■ 42.4784, 68.4758,
24.9715

■ 41.5438, 70.7951,
26.2147

Harmonies

Analogous

The Analogous color harmony consists of three colors that are next to each other on the color wheel.



83.0962, 2.4999, 2.8665



83.0944, 2.4477, 6.3283



83.0962, 0.5255, 9.1858

Triad

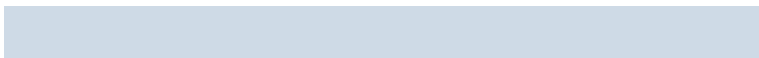
The Triadic color harmony groups three colors that are evenly spaced from another and form a triangle on the color wheel.



83.0962, 2.4454, 6.3297



83.0962, -9.4289, 9.0566



83.0962, -6.1551, -2.2371

Complementary

The Complementary color scheme is a pair of colors which are on the opposite of each other on the color wheel.



83.0944, 2.4477, 6.3283



88.0236, -11.2098, 3.1182

Split Complementary

Split-complementary colors differ from the complementary color scheme. The scheme consists of three colors, the original color and two neighbors of the complement color.



83.0962, -9.2881, -0.4263



83.0944, 2.4477, 6.3283



83.0962, -11.1560, 6.1464

Square

The Square scheme is like the rectangle color scheme, but the four colors are evenly spaced on the color wheel.



83.0962, 2.4454, 6.3297



83.0962, -6.3503, 10.7130



83.0962, -11.1049, 2.6752



83.0962, -2.5087, -2.1828

Rectangle

The Rectangle color scheme consists of four colors that form a rectangle on the color wheel.



83.0944, 2.4477, 6.3283



83.0962, -1.5353, 10.4053



83.0962, -11.1049, 2.6752



83.0962, -7.3019, -1.8231

Sweetspot

The Sweet Spot groups the original color and five complimentary colors.



83.0962, 2.4454, 6.3297



97.3429, -2.5470, 5.9800



83.6093, 5.4046, -2.5243



44.7095, -0.8310, 2.8357

0.0000, NaN, NaN



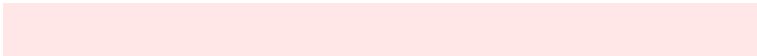
46.2646, -2.4686, 2.5136

Same Dimension

The Same Dimension uses a secret algorithm to generate beautiful new colors.



83.0962, 2.4454, 6.3297



91.2865, 4.0885, 7.3299



85.8047, -2.4133, 9.7879



37.9204, 1.4514, 2.9784



30.8929, 52.9681, 19.4734



8.4224, 14.4898, 4.9301

Inverse Universe

The Inverse Universe completely reimagines the original color for something new.



83.0962, 2.4454, 6.3297



91.2865, 4.0885, 7.3299



85.2063, -6.4324, -0.7327



37.9204, 1.4514, 2.9784



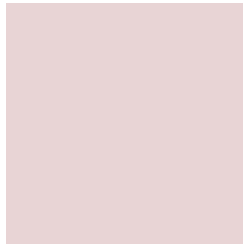
30.8929, 52.9681, 19.4734



8.4224, 14.4898, 4.9301

Previews

White Background



This preview shows how the HunterLab color 83.0944, 2.4477, 6.3283 looks on a white background.

Color Contrast Check

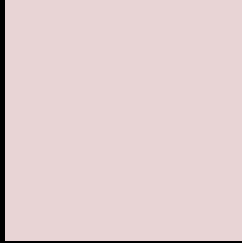
Large Text (above 18pt) WCAG AA × Fail

Any Text WCAG AA × Fail

Large Text (above 18pt) WCAG AAA × Fail

Any Text WCAG AAA × Fail

Black Background



This preview shows how the HunterLab color 83.0944, 2.4477, 6.3283 looks on a black background.

Color Contrast Check

Large Text (above 18pt) WCAG AA ✓ Pass

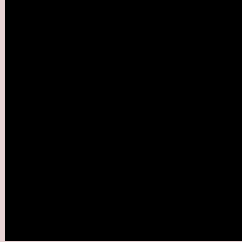
Any Text WCAG AA ✓ Pass

Large Text (above 18pt) WCAG AAA ✓ Pass

Any Text WCAG AAA ✓ Pass

If you want to check with other color combinations, try the [Color Contrast Checker](#).

HunterLab 83.0944, 2.4477, 6.3283 Background



This preview shows how black text looks on a background with the HunterLab color 83.0944, 2.4477, 6.3283.



This preview shows how white text looks on a background with the HunterLab color 83.0944, 2.4477,

6.3283.

Color Blindness Simulation

Color vision deficiency is a very complex topic, and I could not describe the different causes any better than Wikipedia does, so if you want to learn more, you should check out their [article about color blindness](#).

Dichromacy



Original Color

83.0944, 2.4477, 6.3283

Protanopia

83.3008, -2.9768, 5.5185

Deuteranopia

83.2154, 5.9272, 6.5290



Tritanopia

83.1123, 6.4078, -0.0026

Trichromacy



Original Color

83.0944, 2.4477, 6.3283

Protanomaly

83.3447, -1.3109, 6.0767

Deuteranomaly

83.2019, 4.3518, 6.4858

Tritanomaly

83.1460, 4.6642, 2.5363

Monochromacy



Original Color

83.0944, 2.4477, 6.3283

Achromatopsia

83.7318, -4.4677, 4.5493

Achromatomaly

83.5210, -2.1539, 5.3096

CSS Examples

Text

The CSS property to change the color of the text to HunterLab 83.0944, 2.4477, 6.3283 is called "color". The color property can be set on classes, ids or directly on the HTML element.

This example shows how text in the color `rgb(232, 212, 213)` looks like.

```
.text, #text, p{  
    color:rgb(232, 212, 213)  
}
```

If you want to add a text shadow in that color use the text-shadow property, you can generate a text shadow directly with our [CSS Text Shadow Generator](#).

Here you see how black text with a 4 pixel rgb(232, 212, 213) colored shadow looks like.

```
.shadow{ text-shadow: 4px 4px 2px rgb(232, 212, 213) }
```

Border

The CSS property to change the border of an element to HunterLab 83.0944, 2.4477, 6.3283 is called "border".

The border property can be set on classes, ids or directly on the HTML element.

This example shows the color as border, it can be applied via the CSS property "border" or "border-color".

```
.border, #border, table{ border:4px solid rgb(232, 212, 213) }
```


If only the border color should be changed use the property `border-color`.

```
.border{ border-color:rgb(232, 212, 213) }
```

If you want to add a box shadow in that color use:

Here you see how a box with a 4 pixel `rgb(232, 212, 213)` colored shadow looks like.

```
.boxshadow{ -moz-box-shadow:4px 4px 4px  
4px rgb(232, 212, 213); -webkit-box-  
shadow:4px 4px 4px 4px rgb(232, 212, 213);  
box-shadow:4px 4px 4px 4px rgb(232, 212,  
213) }
```

Background

The CSS property to change the background color of an element to HunterLab 83.0944, 2.4477, 6.3283 is called "background". The background property can be set on classes, ids or directly on the HTML element.

```
.background, #background, body{  
background: rgb(232, 212, 213) }
```

If only the background color should be changed can be used:

```
.background{ background-color: rgb(232,  
212, 213) }
```

This example shows the color as background, it is applied via the CSS property "background".

To optimize and compress your CSS code, you can use our [online CSS compressor and optimizer](#) based on csstidy. If you want to create a linear or radial gradient as background or border, check our [CSS Gradient Generator](#).

Hey! You found this booklet interesting? Support Converting Colors with the new Membership Option!

The pro membership hides all ads, plus gives you double the colors in the color bucket, and more awesome pro features!

[Learn more, Memberships starting at \\$2.50/m!](#)

**Follow me
on Twitter!**

@ConvertingColor