

Converting Colors

HunterLab(83.1482, 3.3108,
9.3809)

Have a look what the booklet for
HunterLab(83.1482, 3.3108, 9.3809)
contains.

HunterLab(83.0219, 3.3840, 9.0597)	3
<i>Conversions</i>	4
<i>Details</i>	6
<i>Harmonies</i>	12
<i>Previews</i>	24
<i>Color Blindness Simulation</i>	28
<i>CSS Examples</i>	31

Color

**HunterLab(83.0219, 3.3840,
9.0597)**

Conversions

Conversions Part 1

Format	Color
Hex	ECD3CF
RGB	236, 211, 207
RGB Percent	93%, 83%, 81%
CMY	0.0745, 0.1725, 0.1882
CMYK	0.00, 0.11, 0.12, 0.07
HSL	8°, 43%, 87%
HSV	8°, 12%, 93%
XYZ	69.1488, 68.9264, 68.6910
YIQ	218.0190, 16.1840, 4.0560

Conversions

Conversions Part 2

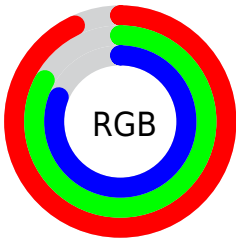
Format	Color
R _Y B	236, 212, 207
Decimal	15520719
CIE Lab	86.47, 8.02, 5.14
CIE LCh	86, 9.527, 32.638
Yxy	68.9294, 0.3344, 0.3334
Android (android.graphics.Color)	4293710799 (0xFFECD3CF)
YUV	218.0190, -5.4324, 15.7693
Hunter-Lab	83.0219, 3.3840, 9.0597

Details

The HunterLab color $83.0219, 3.3840, 9.0597$ is a light color, and the websafe version is hex $FFCCCC$. A complement of this color would be $87.7685, -11.7837, 0.2681$, and the grayscale version is $83.7594, -4.4692, 4.5508$.

A 20% lighter version of the original color is $100.0000, -5.3358, 5.4332$, and $59.8165, 4.1242, 7.0591$ is the 20% darker color. If you saturate the color by 10%, you get $76.4094, 10.5123, 12.3345$, and if you desaturate by 10%, it is $89.9591, -3.3860, 5.7402$.

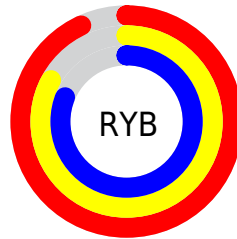
Distribution



Red (93%)

Green (83%)

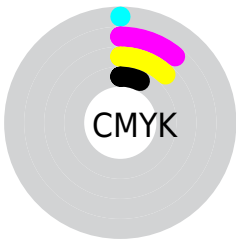
Blue (81%)



Red (93%)

Yellow (83%)

Blue (81%)

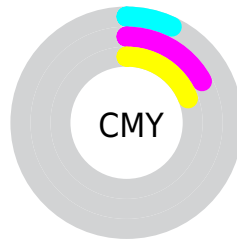


Cyan (0%)

Magenta (11%)

Yellow (12%)

Black (7%)



Cyan (7%)

Magenta (17%)

Yellow (19%)

Brightness & Saturation Gradients

These gradients show how the HunterLab color 83.0219, 3.3840, 9.0597 changes by changing the brightness by 10 percent. The first figure shows a shift by +10% for each color and the second figure -10%.

Similar to the brightness gradients but the following saturation gradients show a change of the HunterLab color 83.0219, 3.3840, 9.0597 by changing the saturation by 10% instead.

83.0219, 3.3840,
9.0597

83.0219, 3.3840,
9.0597

213.7246, -0.7935,
17.9441

71.1718, 3.6379,
8.1749

108.4808, 2.7255,
10.8941

59.9446, 3.8409,
7.3085

122.0351, 2.3325,
11.8412

49.3790, 3.9848,
6.4611

136.1112, 1.8996,
12.8086

39.5194, 4.0627,
5.6311

150.6904, 1.4292,
13.7962

30.4206, 4.0649,
4.8158

165.7559, 0.9231,
14.8038

22.1525, 3.9780,
4.0102

181.2925, 0.3829,

14.8087, 3.7822,

15.8311

3.2043

197.2863, -0.1897,
16.8780

■ 8.4627, 3.6890,
2.9775

0.0000, NaN, NaN

■ 83.0219, 3.3840,
9.0597

■ 83.0219, 3.3840,
9.0597

■ 76.4094, 10.5123,
12.3345

■ 89.9591, -3.3860,
5.7402

■ 70.1675, 18.0264,
15.5274

■ 97.1736, -9.8253,
2.3917

■ 64.3607, 25.9126,
18.5859

■ 98.2716, -11.4016,
3.2754

■ 59.0643, 34.1002,
21.4276

■ 54.3648, 42.4220,
23.9344

■ 50.3557, 50.5742,
25.9540

■ 47.1252, 58.1003,
27.3230

■ 44.7367, 64.4390,
27.9248

■ 43.4717, 68.1511,
27.9802

Harmonies

Analogous

The Analogous color harmony consists of three colors that are next to each other on the color wheel.



83.0237, 4.8686, 4.9174



83.0219, 3.3840, 9.0597



83.0237, -0.2034, 11.8571

Triad

The Triadic color harmony groups three colors that are evenly spaced from another and form a triangle on the color wheel.



83.0237, 3.3816, 9.0610



83.0237, -12.3756, 8.4064



83.0237, -4.0144, -4.6175

Complementary

The Complementary color scheme is a pair of colors which are on the opposite of each other on the color wheel.



83.0219, 3.3840, 9.0597



87.7685, -11.7837, 0.2681

Split Complementary

Split-complementary colors differ from the complementary color scheme. The scheme consists of three colors, the original color and two neighbors of the complement color.



83.0237, -8.5823, -3.5563



83.0219, 3.3840, 9.0597



83.0237, -13.3450, 4.1191

Square

The Square scheme is like the rectangle color scheme, but the four colors are evenly spaced on the color wheel.



83.0237, 3.3816, 9.0610



83.0237, -9.2935, 11.4943



83.0237, -11.9715, -0.2946



83.0237, 0.5391, -3.1191

Rectangle

The Rectangle color scheme consists of four colors that form a rectangle on the color wheel.



83.0219, 3.3840, 9.0597



83.0237, -3.2632, 12.6669



83.0237, -11.9715, -0.2946



83.0237, -5.5991, -4.5483

Sweetspot

The Sweet Spot groups the original color and five complimentary colors.



83.0237, 3.3816, 9.0610



96.8910, -2.4463, 6.8971



82.6397, 9.7977, -3.7511



44.5583, -0.8774, 3.3180

0.0000, NaN, NaN



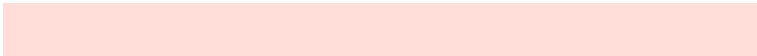
46.2646, -2.4686, 2.5136

Same Dimension

The Same Dimension uses a secret algorithm to generate beautiful new colors.



83.0237, 3.3816, 9.0610



88.6093, 5.8118, 10.8917



87.4000, -4.1051, 13.7375



39.2293, 0.6623, 3.7527



32.4423, 50.0510, 20.8670



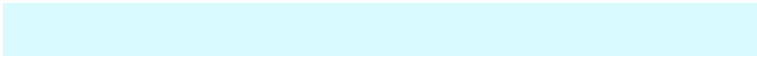
9.6560, 12.2641, 6.1647

Inverse Universe

The Inverse Universe completely reimagines the original color for something new.



87.7685, -11.7837, 0.2681



94.9367, -14.4275, -0.8375



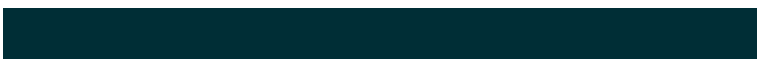
83.2318, -4.4334, -5.3208



40.9225, -4.7463, 0.6156



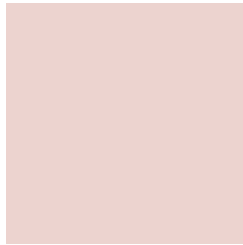
52.0887, -21.7867, -18.0751



14.9276, -6.5314, -4.5588

Previews

White Background



This preview shows how the HunterLab color 83.0219, 3.3840, 9.0597 looks on a white background.

Color Contrast Check

Large Text (above 18pt) WCAG AA × Fail

Any Text WCAG AA × Fail

Large Text (above 18pt) WCAG AAA × Fail

Any Text WCAG AAA × Fail

Black Background



This preview shows how the HunterLab color 83.0219, 3.3840, 9.0597 looks on a black background.

Color Contrast Check

Large Text (above 18pt) WCAG AA ✓ Pass

Any Text WCAG AA ✓ Pass

Large Text (above 18pt) WCAG AAA ✓ Pass

Any Text WCAG AAA ✓ Pass

If you want to check with other color combinations, try the [Color Contrast Checker](#).

HunterLab 83.0219, 3.3840, 9.0597 Background



This preview shows how black text looks on a background with the HunterLab color 83.0219, 3.3840, 9.0597.

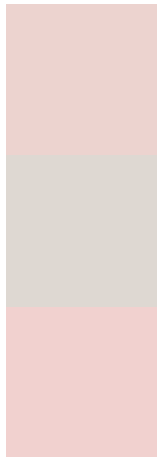


This preview shows how white text looks on a background with the HunterLab color 83.0219, 3.3840,

Color Blindness Simulation

Color vision deficiency is a very complex topic, and I could not describe the different causes any better than Wikipedia does, so if you want to learn more, you should check out their [article about color blindness](#).

Dichromacy



Original Color

83.0219, 3.3840, 9.0597

Protanopia

83.2433, -3.4799, 7.8054

Deuteranopia

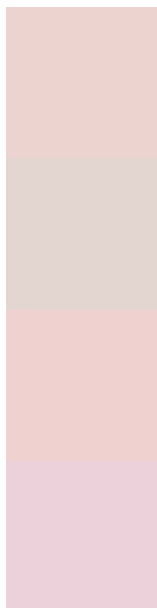
82.9498, 6.1997, 9.0279



Tritanopia

82.9006, 8.6747, 0.2886

Trichromacy



Original Color

83.0219, 3.3840, 9.0597

Protanomaly

83.0828, -0.9459, 8.1316

Deuteranomaly

83.0355, 4.9630, 9.1026

Tritanomaly

82.8658, 6.5902, 3.7184

Monochromacy



Original Color

83.0219, 3.3840, 9.0597

Achromatopsia

83.7318, -4.4677, 4.5493

Achromatomaly

83.3447, -1.3109, 6.0767

CSS Examples

Text

The CSS property to change the color of the text to HunterLab 83.0219, 3.3840, 9.0597 is called "color". The color property can be set on classes, ids or directly on the HTML element.

This example shows how text in the color `rgb(236, 211, 207)` looks like.

```
.text, #text, p{  
    color:rgb(236, 211, 207)  
}
```

If you want to add a text shadow in that color use the text-shadow property, you can generate a text shadow directly with our [CSS Text Shadow Generator](#).

Here you see how black text with a 4 pixel rgb(236, 211, 207) colored shadow looks like.

```
.shadow{ text-shadow: 4px 4px 2px rgb(236, 211, 207) }
```

Border

The CSS property to change the border of an element to HunterLab 83.0219, 3.3840, 9.0597 is called "border". The border property can be set on classes, ids or directly on the HTML element.

This example shows the color as border, it can be applied via the CSS property "border" or "border-color".

```
.border, #border, table{ border:4px solid rgb(236, 211, 207) }
```


If only the border color should be changed use the property `border-color`.

```
.border{ border-color:rgb(236, 211, 207) }
```

If you want to add a box shadow in that color use:

Here you see how a box with a 4 pixel `rgb(236, 211, 207)` colored shadow looks like.

```
.boxshadow{ -moz-box-shadow:4px 4px 4px  
4px rgb(236, 211, 207); -webkit-box-  
shadow:4px 4px 4px 4px rgb(236, 211, 207);  
box-shadow:4px 4px 4px 4px rgb(236, 211,  
207) }
```

Background

The CSS property to change the background color of an element to HunterLab 83.0219, 3.3840, 9.0597 is called "background". The background property can be set on classes, ids or directly on the HTML element.

```
.background, #background, body{  
background: rgb(236, 211, 207) }
```

If only the background color should be changed can be used:

```
.background{ background-color: rgb(236,  
211, 207) }
```

This example shows the color as background, it is applied via the CSS property "background".

To optimize and compress your CSS code, you can use our [online CSS compressor and optimizer](#) based on csstidy. If you want to create a linear or radial gradient as background or border, check our [CSS Gradient Generator](#).

Hey! You found this booklet interesting? Support Converting Colors with the new Membership Option!

The pro membership hides all ads, plus gives you double the colors in the color bucket, and more awesome pro features!

[Learn more, Memberships starting at \\$2.50/m!](#)

**Follow me
on Twitter!**

@ConvertingColor