

# Converting Colors

HunterLab(83.1586, 1.5869,  
14.8873)

Have a look what the booklet for  
HunterLab(83.1586, 1.5869,  
14.8873) contains.

<b>HunterLab(83.1620, 1.5838, 14.8837)</b> .....	3
<b><i>Conversions</i></b> .....	4
<b><i>Details</i></b> .....	6
<b><i>Harmonies</i></b> .....	12
<b><i>Previews</i></b> .....	24
<b><i>Color Blindness Simulation</i></b> .....	28
<b><i>CSS Examples</i></b> .....	31

# Color

**HunterLab(83.1620, 1.5838,  
14.8837)**

# Conversions

## Conversions Part 1

Format	Color
Hex	EED4C2
RGB	238, 212, 194
RGB Percent	93%, 83%, 76%
CMY	0.0667, 0.1686, 0.2392
CMYK	0.00, 0.11, 0.18, 0.07
HSL	25°, 56%, 85%
HSV	25°, 18%, 93%
XYZ	68.5410, 69.1592, 60.7756
YIQ	217.7220, 21.2740, -0.0860

# Conversions

## Conversions Part 2

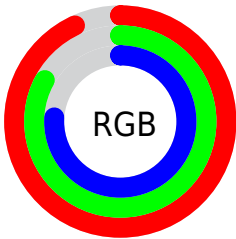
Format	Color
RYB	238, 224, 194
Decimal	15652034
CIELab	86.58, 6.20, 12.20
CIElCh	87, 13.684, 63.037
Yxy	69.1623, 0.3453, 0.3485
Android (android.graphics.Color)	4293842114 (0xFFEED4C2)
YUV	217.7220, -11.6949, 17.7838
Hunter-Lab	83.1620, 1.5838, 14.8837

# Details

The HunterLab color **83.1620, 1.5838, 14.8837** is a light color, and the websafe version is hex **FFCCCC**. A complement of this color would be **82.9622, -9.0454, -6.8461**, and the grayscale version is **83.6556, -4.4637, 4.5452**.

A 20% lighter version of the original color is **99.8724, -6.0350, 7.2541**, and **59.9604, 2.4842, 12.4573** is the 20% darker color. If you saturate the color by 10%, you get **78.3901, 5.6271, 19.5624**, and if you desaturate by 10%, it is **88.1238, -2.0897, 9.7295**.

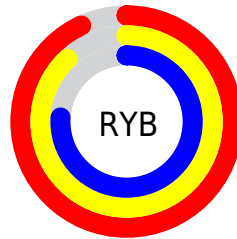
# Distribution



Red (93%)

Green (83%)

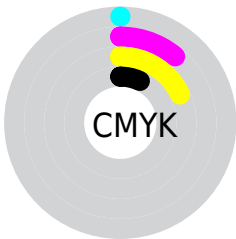
Blue (76%)



Red (93%)

Yellow (88%)

Blue (76%)

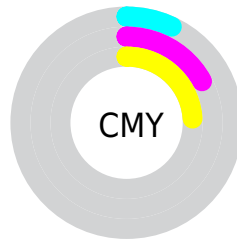


Cyan (0%)

Magenta (11%)

Yellow (18%)

Black (7%)



Cyan (7%)

Magenta (17%)

Yellow (24%)

# Brightness & Saturation Gradients

These gradients show how the HunterLab color 83.1620, 1.5838, 14.8837 changes by changing the brightness by 10 percent. The first figure shows a shift by +10% for each color and the second figure -10%.

Similar to the brightness gradients but the following saturation gradients show a change of the HunterLab color 83.1620, 1.5838, 14.8837 by changing the saturation by 10% instead.



83.1620, 1.5838,  
14.8837

83.1620, 1.5838,  
14.8837

213.9166, -3.2267,  
26.3094

71.3049, 1.9222,  
13.6468

108.6339, 0.7669,  
17.3670

60.0703, 2.2140,  
12.4057

122.1944, 0.2993,  
18.6160

49.4968, 2.4520,  
11.1556

136.2764, -0.2055,  
19.8729

39.6289, 2.6300,  
9.8884

150.8614, -0.7455,  
21.1388

30.5209, 2.7397,  
8.5913

165.9324, -1.3190,  
22.4147

22.2427, 2.7695,  
7.2436

181.4743, -1.9246,

14.8877, 2.7023,

23.7014

5.8093

197.4733, -2.5609,  
24.9995

■ 8.5377, 2.7106,  
5.9764

0.0000, NaN, NaN

■ 83.1620, 1.5838,  
14.8837

■ 83.1620, 1.5838,  
14.8837

■ 78.3901, 5.6271,  
19.5624

■ 88.1238, -2.0897,  
9.7295

■ 73.8226, 10.0754,  
23.6930

■ 93.2523, -5.4162,  
4.1557

■ 69.4840, 14.9467,  
27.1990

■ 98.1841, -10.3607,  
3.1889

■ 65.3997, 20.2483,  
29.9969

■ 98.4466, -10.7826,  
3.4955

■ 61.5972, 25.9661,  
32.0029

■ 58.1053, 32.0531,  
33.1458

■ 54.9525, 38.4162,  
33.3888

■ 52.1603, 44.8891,  
32.8093

■ 51.7674, 45.8517,  
32.7016

# Harmonies

## Analogous

The Analogous color harmony consists of three colors that are next to each other on the color wheel.



83.1639, 6.8268, 11.0377



83.1620, 1.5838, 14.8837



83.1639, -5.1347, 16.0336

# Triad

The Triadic color harmony groups three colors that are evenly spaced from another and form a triangle on the color wheel.



83.1639, 1.5812, 14.8849



83.1639, -17.1226, 3.8640



83.1639, 2.8207, -6.6115

# Complementary

The Complementary color scheme is a pair of colors which are on the opposite of each other on the color wheel.



83.1620, 1.5838, 14.8837



82.9622, -9.0454, -6.8461

# Split Complementary

Split-complementary colors differ from the complementary color scheme. The scheme consists of three colors, the original color and two neighbors of the complement color.



83.1639, -3.7467, -8.9026



83.1620, 1.5838, 14.8837



83.1639, -15.1407, -2.5571

# Square

The Square scheme is like the rectangle color scheme, but the four colors are evenly spaced on the color wheel.



83.1639, 1.5812, 14.8849



83.1639, -15.7981, 9.9809



83.1639, -10.2983, -7.3630



83.1639, 7.5584, -1.3236



# Rectangle

The Rectangle color scheme consists of four colors that form a rectangle on the color wheel.



83.1620, 1.5838, 14.8837



83.1639, -9.5061, 15.1969



83.1639, -10.2983, -7.3630



83.1639, 0.7465, -7.7761

# Sweetspot

The Sweet Spot groups the original color and five complimentary colors.



83.1639, 1.5812, 14.8849



96.6546, -3.1799, 9.0764



78.7085, 15.3949, -2.4459



44.5501, -1.3590, 4.3783

0.0000, NaN, NaN



46.2646, -2.4686, 2.5136



# Same Dimension

The Same Dimension uses a secret algorithm to generate beautiful new colors.



83.1639, 1.5812, 14.8849



88.0596, 3.2347, 17.9795



89.8281, -9.5413, 21.4963



41.0134, -0.8149, 4.8028



38.9751, 33.4490, 24.6019



12.0610, 7.6344, 7.5656

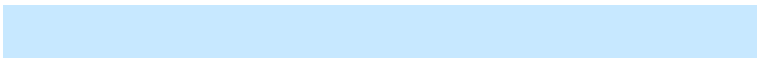


# Inverse Universe

The Inverse Universe completely reimagines the original color for something new.



82.9622, -9.0454, -6.8461



87.7989, -10.4282, -9.9692



76.2986, 2.0917, -15.8060



40.9649, -3.3928, -0.4662



37.7741, 0.1571, -47.5534

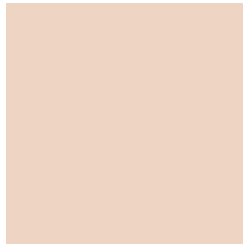


11.7569, -1.3817, -11.7122



# Previews

## White Background



This preview shows how the HunterLab color 83.1620, 1.5838, 14.8837 looks on a white background.

## Color Contrast Check

Large Text (above 18pt) WCAG AA × Fail

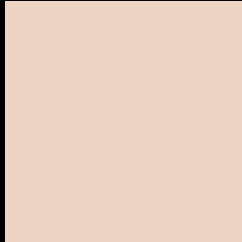
Any Text WCAG AA × Fail

Large Text (above 18pt) WCAG AAA × Fail

Any Text WCAG AAA × Fail



# Black Background



This preview shows how the HunterLab color 83.1620, 1.5838, 14.8837 looks on a black background.

## Color Contrast Check

Large Text (above 18pt) WCAG AA ✓ Pass

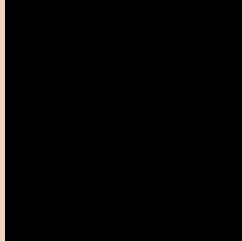
Any Text WCAG AA ✓ Pass

Large Text (above 18pt) WCAG AAA ✓ Pass

Any Text WCAG AAA ✓ Pass

If you want to check with other color combinations, try the [Color Contrast Checker](#).

## HunterLab 83.1620, 1.5838, 14.8837 Background



This preview shows how black text looks on a background with the HunterLab color 83.1620, 1.5838, 14.8837.



This preview shows how white text looks on a background with the HunterLab color 83.1620, 1.5838,



# Color Blindness Simulation

Color vision deficiency is a very complex topic, and I could not describe the different causes any better than Wikipedia does, so if you want to learn more, you should check out their [article about color blindness](#).

## Dichromacy



### Original Color

83.1620, 1.5838, 14.8837

### Protanopia

83.2262, -4.3413, 14.0030

### Deuteranopia

83.1468, 6.1796, 14.5269



## Tritanopia

83.2891, 9.8965, 1.2947

# Trichromacy



## Original Color

83.1620, 1.5838, 14.8837

## Protanomaly

83.2851, -2.6148, 14.5192

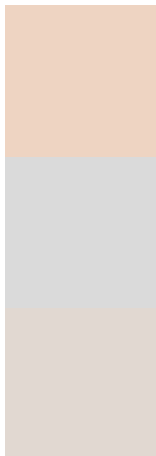
## Deuteranomaly

83.1192, 4.5650, 14.4694

## Tritanomaly

83.1299, 7.1622, 6.4518

# Monochromacy



## Original Color

83.1620, 1.5838, 14.8837

## Achromatopsia

83.7318, -4.4677, 4.5493

## Achromatomaly

83.5001, -2.6503, 8.5741

# CSS Examples

## Text

The CSS property to change the color of the text to HunterLab 83.1620, 1.5838, 14.8837 is called "color". The color property can be set on classes, ids or directly on the HTML element.

This example shows how text in the color `rgb(238, 212, 194)` looks like.

```
.text, #text, p{  
  color:rgb(238, 212, 194)  
}
```

If you want to add a text shadow in that color use the text-shadow property, you can generate a text shadow directly with our [CSS Text Shadow Generator](#).

Here you see how black text with a 4 pixel rgb(238, 212, 194) colored shadow looks like.

```
.shadow{ text-shadow: 4px 4px 2px rgb(238, 212, 194) }
```

## Border

The CSS property to change the border of an element to HunterLab 83.1620, 1.5838, 14.8837 is called "border". The border property can be set on classes, ids or directly on the HTML element.

This example shows the color as border, it can be applied via the CSS property "border" or "border-color".

```
.border, #border, table{ border:4px solid rgb(238, 212, 194) }
```



If only the border color should be changed use the property border-color.

```
.border{ border-color:rgb(238, 212, 194) }
```

If you want to add a box shadow in that color use:

Here you see how a box with a 4 pixel rgb(238, 212, 194) colored shadow looks like.

```
.boxshadow{ -moz-box-shadow:4px 4px 4px  
4px rgb(238, 212, 194); -webkit-box-  
shadow:4px 4px 4px 4px rgb(238, 212, 194);  
box-shadow:4px 4px 4px 4px rgb(238, 212,  
194) }
```

# Background

The CSS property to change the background color of an element to HunterLab 83.1620, 1.5838, 14.8837 is called "background". The background property can be set on classes, ids or directly on the HTML element.

```
.background, #background, body{  
background: rgb(238, 212, 194) }
```

If only the background color should be changed can be used:

```
.background{ background-color: rgb(238,  
212, 194) }
```

This example shows the color as background, it is applied via the CSS property "background".

To optimize and compress your CSS code, you can use our [online CSS compressor and optimizer](#) based on csstidy. If you want to create a linear or radial gradient as background or border, check our [CSS Gradient Generator](#).

Hey! You found this booklet interesting? Support Converting Colors with the new Membership Option!

The pro membership hides all ads, plus gives you double the colors in the color bucket, and more awesome pro features!

**[Learn more, Memberships starting at \\$2.50/m!](#)**

**Follow me  
on Twitter!**

@ConvertingColor