

Converting Colors

HunterLab(83.1971, 0.0941,
13.5408)

Have a look what the booklet for
HunterLab(83.1971, 0.0941,
13.5408) contains.

HunterLab(83.1337, 0.1009, 13.5554)	3
<i>Conversions</i>	4
<i>Details</i>	6
<i>Harmonies</i>	12
<i>Previews</i>	24
<i>Color Blindness Simulation</i>	28
<i>CSS Examples</i>	31

Color

**HunterLab(83.1337, 0.1009,
13.5554)**

Conversions

Conversions Part 1

Format	Color
Hex	EAD5C5
RGB	234, 213, 197
RGB Percent	92%, 84%, 77%
CMY	0.0823, 0.1647, 0.2274
CMYK	0.00, 0.09, 0.16, 0.08
HSL	26°, 47%, 85%
HSV	26°, 16%, 92%
XYZ	67.8040, 69.1121, 62.5896
YIQ	217.4550, 17.6520, -0.5240

Conversions

Conversions Part 2

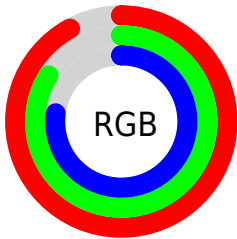
Format	Color
RYB	234, 225, 197
Decimal	15390149
CIELab	86.56, 4.69, 10.53
CIELCh	87, 11.531, 65.991
Yxy	69.1152, 0.3399, 0.3464
Android (android.graphics.Color)	4293580229 (0xFFEAD5C5)
YUV	217.4550, -10.0843, 14.5100
Hunter-Lab	83.1337, 0.1009, 13.5554

Details

The HunterLab color $83.1337, 0.1009, 13.5554$ is a light color, and the websafe version is hex `CCCCCC`. A complement of this color would be $82.4331, -7.9502, -5.3325$, and the grayscale version is $83.5343, -4.4572, 4.5386$.

A 20% lighter version of the original color is $99.9679, -5.5118, 5.8916$, and $59.9182, 1.0337, 11.2252$ is the 20% darker color. If you saturate the color by 10%, you get $78.5591, 3.6787, 18.4035$, and if you desaturate by 10%, it is $87.8797, -3.1220, 8.2259$.

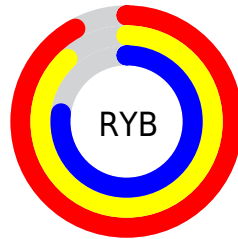
Distribution



Red (92%)

Green (84%)

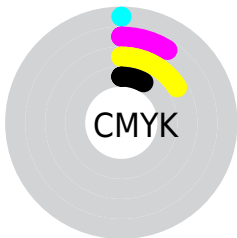
Blue (77%)



Red (92%)

Yellow (88%)

Blue (77%)

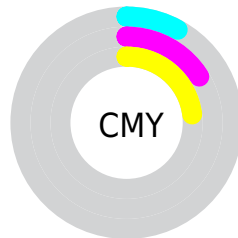


Cyan (0%)

Magenta (9%)

Yellow (16%)

Black (8%)



Cyan (8%)

Magenta (16%)

Yellow (23%)

Brightness & Saturation Gradients

These gradients show how the HunterLab color 83.1337, 0.1009, 13.5554 changes by changing the brightness by 10 percent. The first figure shows a shift by +10% for each color and the second figure -10%.

Similar to the brightness gradients but the following saturation gradients show a change of the HunterLab color 83.1337, 0.1009, 13.5554 by changing the saturation by 10% instead.

83.1337, 0.1009,
13.5554

83.1337, 0.1009,
13.5554

213.8778, -5.2349,
24.3717

71.2780, 0.5097,
12.4034

108.6030, -0.8475,
15.8825

60.0449, 0.8757,
11.2528

122.1622, -1.3771,
17.0591

49.4730, 1.1920,
10.1003

136.2431, -1.9416,
18.2465

39.6067, 1.4535,
8.9392

150.8268, -2.5393,
19.4457

30.5007, 1.6530,
7.7593

165.8967, -3.1688,
20.6574

22.2245, 1.7806,
6.5439

181.4376, -3.8286,

14.8717, 1.8217,

21.8820

5.2632

197.4355, -4.5177,
23.1200

■ 8.5226, 1.9437,
5.5873

0.0000, NaN, NaN

■ 83.1337, 0.1009,
13.5554

■ 83.1337, 0.1009,
13.5554

■ 78.5591, 3.6787,
18.4035

■ 87.8797, -3.1220,
8.2259

■ 74.1676, 7.6463,
22.7014

■ 92.7766, -6.0121,
2.4681

■ 69.9802, 12.0241,
26.3780

■ 97.3974, -10.8964,
2.2333

■ 66.0183, 16.8253,
29.3555

■ 98.0982, -12.0161,
3.0569

■ 62.3052, 22.0472,
31.5558

■ 58.8652, 27.6624,
32.9103

■ 55.7227, 33.6072,
33.3777

■ 52.8994, 39.7686,
32.9771

■ 51.8095, 42.3459,
32.6661

Harmonies

Analogous

The Analogous color harmony consists of three colors that are next to each other on the color wheel.



83.1356, 4.6801, 10.4622



83.1337, 0.1009, 13.5554



83.1356, -5.5893, 14.3051

Triad

The Triadic color harmony groups three colors that are evenly spaced from another and form a triangle on the color wheel.



83.1356, 0.0984, 13.5566



83.1356, -15.1354, 3.4219



83.1356, 2.1460, -4.4263

Complementary

The Complementary color scheme is a pair of colors which are on the opposite of each other on the color wheel.



83.1337, 0.1009, 13.5554



82.4331, -7.9502, -5.3325

Split Complementary

Split-complementary colors differ from the complementary color scheme. The scheme consists of three colors, the original color and two neighbors of the complement color.



83.1356, -3.2852, -6.6090



83.1337, 0.1009, 13.5554



83.1356, -13.1838, -1.8845

Square

The Square scheme is like the rectangle color scheme, but the four colors are evenly spaced on the color wheel.



83.1356, 0.0984, 13.5566



83.1356, -14.2847, 8.6851



83.1356, -8.8838, -5.6488



83.1356, 5.8845, 0.1388

Rectangle

The Rectangle color scheme consists of four colors that form a rectangle on the color wheel.



83.1337, 0.1009, 13.5554



83.1356, -9.2223, 13.4207



83.1356, -8.8838, -5.6488



83.1356, 0.4522, -5.4766

Sweetspot

The Sweet Spot groups the original color and five complimentary colors.



83.1356, 0.0984, 13.5566



97.3017, -3.7058, 8.5846



79.0686, 12.0497, -1.1063



44.8423, -1.6051, 4.1722

0.0000, NaN, NaN



46.2646, -2.4686, 2.5136

Same Dimension

The Same Dimension uses a secret algorithm to generate beautiful new colors.



83.1356, 0.0984, 13.5566



89.9772, 1.3568, 16.7586



88.6733, -9.1084, 19.1605



40.1568, -0.9253, 4.7684



39.1449, 30.9701, 24.6631



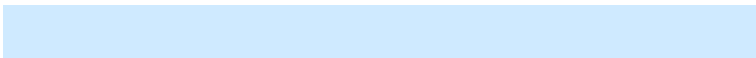
11.7948, 6.7048, 7.3853

Inverse Universe

The Inverse Universe completely reimagines the original color for something new.



82.4331, -7.9502, -5.3325



89.0453, -9.3102, -8.2874



76.9149, 1.2827, -12.5881



39.9595, -3.1892, -0.5414



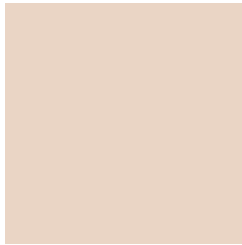
36.0366, 2.1692, -49.7254



11.0017, -0.9279, -11.7481

Previews

White Background



This preview shows how the HunterLab color 83.1337, 0.1009, 13.5554 looks on a white background.

Color Contrast Check

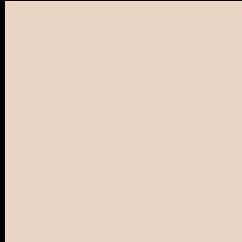
Large Text (above 18pt) WCAG AA × Fail

Any Text WCAG AA × Fail

Large Text (above 18pt) WCAG AAA × Fail

Any Text WCAG AAA × Fail

Black Background



This preview shows how the HunterLab color 83.1337, 0.1009, 13.5554 looks on a black background.

Color Contrast Check

Large Text (above 18pt) WCAG AA ✓ Pass

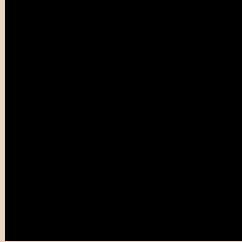
Any Text WCAG AA ✓ Pass

Large Text (above 18pt) WCAG AAA ✓ Pass

Any Text WCAG AAA ✓ Pass

If you want to check with other color combinations, try the [Color Contrast Checker](#).

HunterLab 83.1337, 0.1009, 13.5554 Background



This preview shows how black text looks on a background with the HunterLab color 83.1337, 0.1009, 13.5554.



This preview shows how white text looks on a background with the HunterLab color 83.1337, 0.1009,

Color Blindness Simulation

Color vision deficiency is a very complex topic, and I could not describe the different causes any better than Wikipedia does, so if you want to learn more, you should check out their [article about color blindness](#).

Dichromacy



Original Color

83.1337, 0.1009, 13.5554

Protanopia

83.2123, -4.2239, 12.7018

Deuteranopia

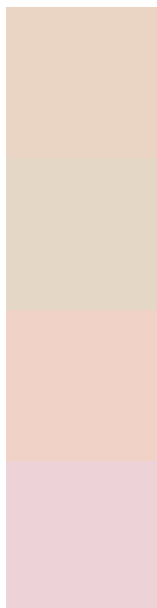
83.1208, 6.2573, 13.2194



Tritanopia

83.1951, 8.1398, 0.6411

Trichromacy



Original Color

83.1337, 0.1009, 13.5554

Protanomaly

83.1698, -2.8488, 13.1126

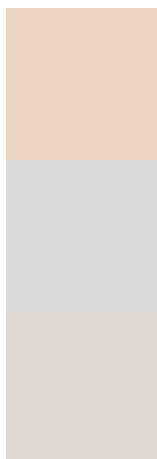
Deuteranomaly

82.9887, 4.2900, 13.0429

Tritanomaly

83.0687, 5.5577, 5.3970

Monochromacy



Original Color

83.1337, 0.1009, 13.5554

Achromatopsia

83.2990, -4.4446, 4.5258

Achromatomaly

83.3384, -3.1504, 7.9193

CSS Examples

Text

The CSS property to change the color of the text to HunterLab 83.1337, 0.1009, 13.5554 is called "color". The color property can be set on classes, ids or directly on the HTML element.

This example shows how text in the color `rgb(234, 213, 197)` looks like.

```
.text, #text, p{  
    color:rgb(234, 213, 197)  
}
```

If you want to add a text shadow in that color use the text-shadow property, you can generate a text shadow directly with our [CSS Text Shadow Generator](#).

Here you see how black text with a 4 pixel rgb(234, 213, 197) colored shadow looks like.

```
.shadow{ text-shadow: 4px 4px 2px rgb(234, 213, 197) }
```

Border

The CSS property to change the border of an element to HunterLab 83.1337, 0.1009, 13.5554 is called "border". The border property can be set on classes, ids or directly on the HTML element.

This example shows the color as border, it can be applied via the CSS property "border" or "border-color".

```
.border, #border, table{ border:4px solid rgb(234, 213, 197) }
```


If only the border color should be changed use the property `border-color`.

```
.border{ border-color:rgb(234, 213, 197) }
```

If you want to add a box shadow in that color use:

Here you see how a box with a 4 pixel `rgb(234, 213, 197)` colored shadow looks like.

```
.boxshadow{ -moz-box-shadow:4px 4px 4px 4px rgb(234, 213, 197); -webkit-box-shadow:4px 4px 4px 4px rgb(234, 213, 197); box-shadow:4px 4px 4px 4px rgb(234, 213, 197) }
```

Background

The CSS property to change the background color of an element to HunterLab 83.1337, 0.1009, 13.5554 is called "background". The background property can be set on classes, ids or directly on the HTML element.

```
.background, #background, body{  
background: rgb(234, 213, 197) }
```

If only the background color should be changed can be used:

```
.background{ background-color: rgb(234,  
213, 197) }
```

This example shows the color as background, it is applied via the CSS property "background".

To optimize and compress your CSS code, you can use our [online CSS compressor and optimizer](#) based on csstidy. If you want to create a linear or radial gradient as background or border, check our [CSS Gradient Generator](#).

Hey! You found this booklet interesting? Support Converting Colors with the new Membership Option!

The pro membership hides all ads, plus gives you double the colors in the color bucket, and more awesome pro features!

[Learn more, Memberships starting at \\$2.50/m!](#)

**Follow me
on Twitter!**

@ConvertingColor