

Converting Colors

HunterLab(83.2118, 3.3041,
7.1164)

Have a look what the booklet for
HunterLab(83.2118, 3.3041, 7.1164)
contains.

HunterLab(83.3682, 3.3151, 7.1315)	3
<i>Conversions</i>	4
<i>Details</i>	6
<i>Harmonies</i>	12
<i>Previews</i>	24
<i>Color Blindness Simulation</i>	28
<i>CSS Examples</i>	31

Color

**HunterLab(83.3682, 3.3151,
7.1315)**

Conversions

Conversions Part 1

Format	Color
Hex	EBD4D4
RGB	235, 212, 212
RGB Percent	92%, 83%, 83%
CMY	0.0784, 0.1686, 0.1686
CMYK	0.00, 0.10, 0.10, 0.08
HSL	0°, 37%, 88%
HSV	0°, 10%, 92%
XYZ	69.6881, 69.5026, 72.0297
YIQ	218.8770, 13.7080, 4.8760

Conversions

Conversions Part 2

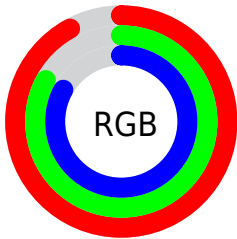
Format	Color
R _Y B	235, 212, 212
Decimal	15455444
CIE Lab	86.75, 7.96, 2.89
CIE LCh	87, 8.471, 19.977
Yxy	69.5056, 0.3299, 0.3291
Android (android.graphics.Color)	4293645524 (0xFFEBD4D4)
YUV	218.8770, -3.3904, 14.1399
Hunter-Lab	83.3682, 3.3151, 7.1315

Details

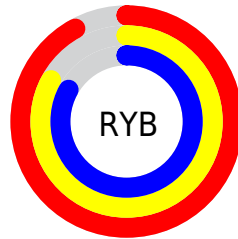
The HunterLab color $83.3682, 3.3151, 7.1315$ is a light color, and the websafe version is hex `CCCCCC`. A complement of this color would be $89.1125, -12.0156, 2.4060$, and the grayscale version is $84.1234, -4.4886, 4.5706$.

A 20% lighter version of the original color is $100.0000, -5.3358, 5.4332$, and $60.1099, 3.8892, 5.6443$ is the 20% darker color. If you saturate the color by 10%, you get $75.8284, 12.0357, 9.5136$, and if you desaturate by 10%, it is $91.3202, -5.0375, 4.9063$.

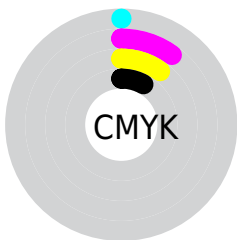
Distribution



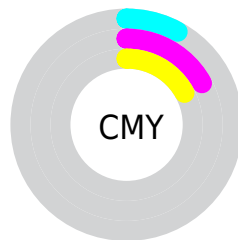
- Red (92%)
- Green (83%)
- Blue (83%)



- Red (92%)
- Yellow (83%)
- Blue (83%)



- Cyan (0%)
- Magenta (10%)
- Yellow (10%)
- Black (8%)



- Cyan (8%)
- Magenta (17%)
- Yellow (17%)

Brightness & Saturation Gradients

These gradients show how the HunterLab color 83.3682, 3.3151, 7.1315 changes by changing the brightness by 10 percent. The first figure shows a shift by +10% for each color and the second figure -10%.

Similar to the brightness gradients but the following saturation gradients show a change of the HunterLab color 83.3682, 3.3151, 7.1315 by changing the saturation by 10% instead.

83.3682, 3.3151,
7.1315

83.3682, 3.3151,
7.1315

214.1990, -0.8931,
15.2407

71.5008, 3.5734,
6.3529

108.8593, 2.6488,
8.7692

60.2553, 3.7809,
5.5993

122.4288, 2.2521,
9.6245

49.6703, 3.9297,
4.8723

136.5195, 1.8158,
10.5037

39.7899, 4.0129,
4.1725

151.1128, 1.3420,
11.4063

30.6686, 4.0209,
3.4998

166.1919, 0.8326,
12.3318

22.3756, 3.9407,
2.8534

181.7417, 0.2894,

15.0040, 3.7526,

13.2796

2.2309

197.7483, -0.2863,
14.2494

■ 8.6469, 3.5831,
1.8581

0.0000, NaN, NaN

■ 83.3682, 3.3151,
7.1315

■ 83.3682, 3.3151,
7.1315

■ 75.8284, 12.0357,
9.5136

■ 91.3202, -5.0375,
4.9063

■ 68.7708, 21.1375,
12.0560

■ 98.1847, -11.7094,
3.1659

■ 62.2922, 30.5621,
14.7480

■ 56.5088, 40.1360,
17.5397

■ 51.5547, 49.4984,
20.3198

■ 47.5685, 58.0505,
22.8974

■ 44.6628, 65.0090,
25.0183

■ 42.8756, 69.6543,
26.4441

■ 42.0419, 71.9287,
27.1450

Harmonies

Analogous

The Analogous color harmony consists of three colors that are next to each other on the color wheel.



83.3700, 3.6908, 3.1831



83.3682, 3.3151, 7.1315



83.3700, 0.8310, 10.2365

Triad

The Triadic color harmony groups three colors that are evenly spaced from another and form a triangle on the color wheel.



83.3700, 3.3127, 7.1329



83.3700, -10.5774, 9.3520



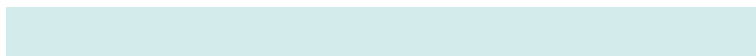
83.3700, -5.8607, -3.4283

Complementary

The Complementary color scheme is a pair of colors which are on the opposite of each other on the color wheel.



83.3682, 3.3151, 7.1315



89.1125, -12.0156, 2.4060

Split Complementary

Split-complementary colors differ from the complementary color scheme. The scheme consists of three colors, the original color and two neighbors of the complement color.



83.3700, -9.6083, -1.5934



83.3682, 3.3151, 7.1315



83.3700, -12.2955, 5.8706

Square

The Square scheme is like the rectangle color scheme, but the four colors are evenly spaced on the color wheel.



83.3700, 3.3127, 7.1329



83.3700, -7.2076, 11.4729



83.3700, -11.9443, 1.8571



83.3700, -1.6620, -3.0489

Rectangle

The Rectangle color scheme consists of four colors that form a rectangle on the color wheel.



83.3682, 3.3151, 7.1315



83.3700, -1.6557, 11.4709



83.3700, -11.9443, 1.8571



83.3700, -7.2136, -3.0466

Sweetspot

The Sweet Spot groups the original color and five complimentary colors.



83.3700, 3.3127, 7.1329



97.3312, -2.6138, 6.1534



84.1120, 7.2996, -3.4461



44.7027, -0.8700, 2.9370

0.0000, NaN, NaN



46.2646, -2.4686, 2.5136

Same Dimension

The Same Dimension uses a secret algorithm to generate beautiful new colors.



83.3700, 3.3127, 7.1329



89.5506, 5.7665, 8.4023



86.8674, -2.6979, 10.9662



38.8001, 1.4098, 3.2753



31.3536, 53.6883, 20.2599



8.7868, 15.0416, 5.6777

Inverse Universe

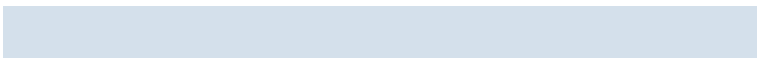
The Inverse Universe completely reimagines the original color for something new.



89.1125, -12.0156, 2.4060



97.2871, -14.8967, 2.0299



85.4629, -6.1360, -1.9731



41.3780, -5.4709, 1.1535



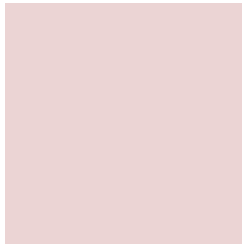
60.3267, -31.9751, -6.3780



16.9053, -8.9606, -1.7867

Previews

White Background



This preview shows how the HunterLab color 83.3682, 3.3151, 7.1315 looks on a white background.

Color Contrast Check

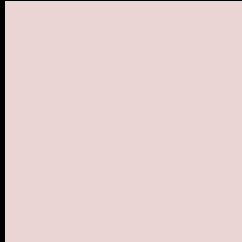
Large Text (above 18pt) WCAG AA × Fail

Any Text WCAG AA × Fail

Large Text (above 18pt) WCAG AAA × Fail

Any Text WCAG AAA × Fail

Black Background



This preview shows how the HunterLab color 83.3682, 3.3151, 7.1315 looks on a black background.

Color Contrast Check

Large Text (above 18pt) WCAG AA ✓ Pass

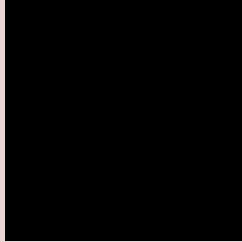
Any Text WCAG AA ✓ Pass

Large Text (above 18pt) WCAG AAA ✓ Pass

Any Text WCAG AAA ✓ Pass

If you want to check with other color combinations, try the [Color Contrast Checker](#).

HunterLab 83.3682, 3.3151, 7.1315 Background



This preview shows how black text looks on a background with the HunterLab color 83.3682, 3.3151, 7.1315.



This preview shows how white text looks on a background with the HunterLab color 83.3682, 3.3151,

7.1315.

Color Blindness Simulation

Color vision deficiency is a very complex topic, and I could not describe the different causes any better than Wikipedia does, so if you want to learn more, you should check out their [article about color blindness](#).

Dichromacy



Original Color

83.3682, 3.3151, 7.1315

Protanopia

83.3645, -2.8179, 6.0732

Deuteranopia

83.2898, 6.1159, 7.0905



Tritanopia

83.4198, 7.4355, 0.3941

Trichromacy



Original Color

83.3682, 3.3151, 7.1315

Protanomaly

83.5080, -0.8107, 6.7485

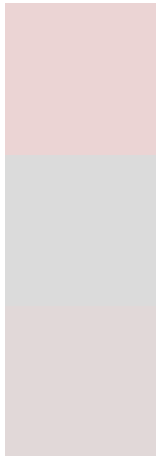
Deuteranomaly

83.3781, 4.8850, 7.1703

Tritanomaly

83.4517, 5.6921, 2.9213

Monochromacy



Original Color

83.3682, 3.3151, 7.1315

Achromatopsia

84.1651, -4.4908, 4.5728

Achromatomaly

83.7121, -1.4952, 5.5441

CSS Examples

Text

The CSS property to change the color of the text to HunterLab 83.3682, 3.3151, 7.1315 is called "color". The color property can be set on classes, ids or directly on the HTML element.

This example shows how text in the color `rgb(235, 212, 212)` looks like.

```
.text, #text, p{  
    color:rgb(235, 212, 212)  
}
```

If you want to add a text shadow in that color use the text-shadow property, you can generate a text shadow directly with our [CSS Text Shadow Generator](#).

Here you see how black text with a 4 pixel rgb(235, 212, 212) colored shadow looks like.

```
.shadow{ text-shadow: 4px 4px 2px rgb(235, 212, 212) }
```

Border

The CSS property to change the border of an element to HunterLab 83.3682, 3.3151, 7.1315 is called "border".

The border property can be set on classes, ids or directly on the HTML element.

This example shows the color as border, it can be applied via the CSS property "border" or "border-color".

```
.border, #border, table{ border:4px solid rgb(235, 212, 212) }
```


If only the border color should be changed use the property `border-color`.

```
.border{ border-color:rgb(235, 212, 212) }
```

If you want to add a box shadow in that color use:

Here you see how a box with a 4 pixel `rgb(235, 212, 212)` colored shadow looks like.

```
.boxshadow{ -moz-box-shadow:4px 4px 4px  
4px rgb(235, 212, 212); -webkit-box-  
shadow:4px 4px 4px 4px rgb(235, 212, 212);  
box-shadow:4px 4px 4px 4px rgb(235, 212,  
212) }
```

Background

The CSS property to change the background color of an element to HunterLab 83.3682, 3.3151, 7.1315 is called "background". The background property can be set on classes, ids or directly on the HTML element.

```
.background, #background, body{  
background: rgb(235, 212, 212) }
```

If only the background color should be changed can be used:

```
.background{ background-color: rgb(235,  
212, 212) }
```

This example shows the color as background, it is applied via the CSS property "background".

To optimize and compress your CSS code, you can use our [online CSS compressor and optimizer](#) based on csstidy. If you want to create a linear or radial gradient as background or border, check our [CSS Gradient Generator](#).

Hey! You found this booklet interesting? Support Converting Colors with the new Membership Option!

The pro membership hides all ads, plus gives you double the colors in the color bucket, and more awesome pro features!

[Learn more, Memberships starting at \\$2.50/m!](#)

**Follow me
on Twitter!**

@ConvertingColor