

# Converting Colors

HunterLab(83.2316, 3.7128,  
4.1981)

Have a look what the booklet for  
HunterLab(83.2316, 3.7128, 4.1981)  
contains.

<b>HunterLab(83.3502, 3.6242, 4.2408)</b> .....	3
<b><i>Conversions</i></b> .....	4
<b><i>Details</i></b> .....	6
<b><i>Harmonies</i></b> .....	12
<b><i>Previews</i></b> .....	24
<b><i>Color Blindness Simulation</i></b> .....	28
<b><i>CSS Examples</i></b> .....	31

# Color

**HunterLab(83.3502, 3.6242,  
4.2408)**

# Conversions

## Conversions Part 1

Format	Color
Hex	E9D4DA
RGB	233, 212, 218
RGB Percent	91%, 83%, 85%
CMY	0.0863, 0.1686, 0.1451
CMYK	0.00, 0.09, 0.06, 0.09
HSL	343°, 32%, 87%
HSV	343°, 9%, 91%
XYZ	69.8027, 69.4726, 76.0602
YIQ	218.9630, 10.5900, 6.3180

# Conversions

## Conversions Part 2

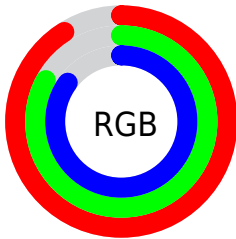
Format	Color
R <sub>Y</sub> B	233, 212, 218
Decimal	15324378
CIE Lab	86.74, 8.27, -0.32
CIE LCh	87, 8.279, 357.764
Yxy	69.4756, 0.3242, 0.3226
Android (android.graphics.Color)	4293514458 (0xFFE9D4DA)
YUV	218.9630, -0.4748, 12.3104
Hunter-Lab	83.3502, 3.6242, 4.2408

# Details

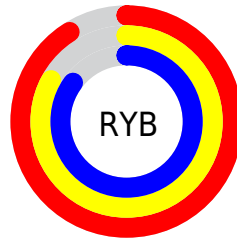
The HunterLab color  $83.3502, 3.6242, 4.2408$  is a light color, and the websafe version is hex `CCCCCC`. A complement of this color would be  $88.2172, -12.4212, 5.2961$ , and the grayscale version is  $84.1494, -4.4900, 4.5720$ .

A 20% lighter version of the original color is  $100.0000, -5.3358, 5.4332$ , and  $60.0878, 4.1644, 2.9084$  is the 20% darker color. If you saturate the color by 10%, you get  $76.0435, 13.2181, 3.8340$ , and if you desaturate by 10%, it is  $91.0459, -5.7307, 4.9920$ .

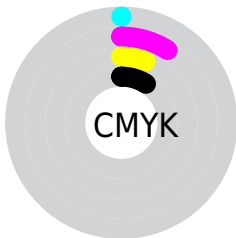
# Distribution



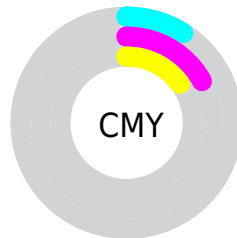
- Red (91%)
- Green (83%)
- Blue (85%)



- Red (91%)
- Yellow (83%)
- Blue (85%)



- Cyan (0%)
- Magenta (9%)
- Yellow (6%)
- Black (9%)



- Cyan (9%)
- Magenta (17%)
- Yellow (15%)

# Brightness & Saturation Gradients

These gradients show how the HunterLab color 83.3502, 3.6242, 4.2408 changes by changing the brightness by 10 percent. The first figure shows a shift by +10% for each color and the second figure -10%.

Similar to the brightness gradients but the following saturation gradients show a change of the HunterLab color 83.3502, 3.6242, 4.2408 by changing the saturation by 10% instead.



83.3502, 3.6242,  
4.2408

83.3502, 3.6242,  
4.2408

214.1744, -0.4763,  
11.2546

71.4837, 3.8682,  
3.6108

108.8396, 2.9849,  
5.6022

60.2391, 4.0606,  
3.0142

122.4083, 2.6009,  
6.3280

49.6551, 4.1936,  
2.4546

136.4983, 2.1767,  
7.0826

39.7759, 4.2598,  
1.9344

151.0908, 1.7148,  
7.8650

30.6557, 4.2497,  
1.4570

166.1692, 1.2169,  
8.6742

22.3640, 4.1499,  
1.0267

181.7183, 0.6848,

14.9938, 3.9402,

9.5093

0.6490

197.7243, 0.1199,  
10.3697

■ 8.6374, 3.7515,  
0.3152

0.0000, NaN, NaN

■ 83.3502, 3.6242,  
4.2408

■ 83.3502, 3.6242,  
4.2408

■ 76.0435, 13.2181,  
3.8340

■ 91.0459, -5.7307,  
4.9920

■ 69.1889, 23.0305,  
3.8428

■ 97.8915, -12.9917,  
4.6681

■ 62.8734, 32.9656,  
4.3560

■ 98.0122, -12.3214,  
2.9484

■ 57.2006, 42.8166,  
5.4644

■ 52.2899, 52.2063,  
7.2405

■ 48.2660, 60.5532,  
9.6995

■ 45.2344, 67.1281,  
12.7493

■ 43.2417, 71.2758,  
16.1571

■ 42.1824, 72.9286,  
19.5406

# Harmonies

## Analogous

The Analogous color harmony consists of three colors that are next to each other on the color wheel.



83.3520, 2.3632, 0.4116



83.3502, 3.6242, 4.2408



83.3520, 2.6827, 7.9756

# Triad

The Triadic color harmony groups three colors that are evenly spaced from another and form a triangle on the color wheel.



83.3520, 3.6219, 4.2422



83.3520, -8.1143, 10.9407



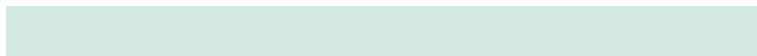
83.3520, -8.6403, -2.1001

# Complementary

The Complementary color scheme is a pair of colors which are on the opposite of each other on the color wheel.



83.3502, 3.6242, 4.2408



88.2172, -12.4212, 5.2961

# Split Complementary

Split-complementary colors differ from the complementary color scheme. The scheme consists of three colors, the original color and two neighbors of the complement color.



83.3520, -11.3543, 0.9455



83.3502, 3.6242, 4.2408



83.3520, -11.0549, 8.4619

# Square

The Square scheme is like the rectangle color scheme, but the four colors are evenly spaced on the color wheel.



83.3520, 3.6219, 4.2422



83.3520, -4.1423, 11.7292



83.3520, -12.2297, 4.8309



83.3520, -4.7611, -3.3592



# Rectangle

The Rectangle color scheme consists of four colors that form a rectangle on the color wheel.



83.3502, 3.6242, 4.2408



83.3520, 0.9464, 9.9318



83.3520, -12.2297, 4.8309



83.3520, -9.7163, -1.2443

# Sweetspot

The Sweet Spot groups the original color and five complimentary colors.



83.3520, 3.6219, 4.2422



97.4006, -2.2327, 5.1569



83.2199, 4.1617, -3.5714



44.7433, -0.6473, 2.3540

0.0000, NaN, NaN



46.2646, -2.4686, 2.5136



# Same Dimension

The Same Dimension uses a secret algorithm to generate beautiful new colors.



83.3520, 3.6219, 4.2422



90.6458, 6.1626, 4.5738



84.4359, 0.4250, 8.2964



38.8906, 1.9007, 1.9750



31.7413, 55.1306, 14.5206



8.9845, 15.7794, 2.7573



# Inverse Universe

The Inverse Universe completely reimagines the original color for something new.



83.3520, 3.6219, 4.2422



90.6458, 6.1626, 4.5738



87.0691, -9.2216, 0.9943



38.8906, 1.9007, 1.9750



31.7413, 55.1306, 14.5206

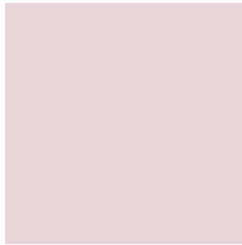


8.9845, 15.7794, 2.7573



# Previews

## White Background



This preview shows how the HunterLab color 83.3502, 3.6242, 4.2408 looks on a white background.

## Color Contrast Check

Large Text (above 18pt) WCAG AA × Fail

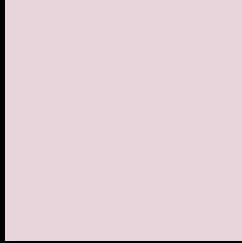
Any Text WCAG AA × Fail

Large Text (above 18pt) WCAG AAA × Fail

Any Text WCAG AAA × Fail



# Black Background



This preview shows how the HunterLab color 83.3502, 3.6242, 4.2408 looks on a black background.

## Color Contrast Check

Large Text (above 18pt) WCAG AA ✓ Pass

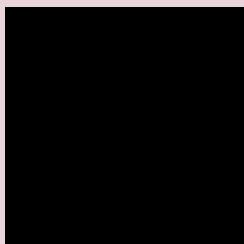
Any Text WCAG AA ✓ Pass

Large Text (above 18pt) WCAG AAA ✓ Pass

Any Text WCAG AAA ✓ Pass

If you want to check with other color combinations, try the [Color Contrast Checker](#).

## HunterLab 83.3502, 3.6242, 4.2408 Background



This preview shows how black text looks on a background with the HunterLab color 83.3502, 3.6242, 4.2408.



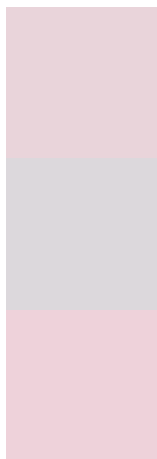
This preview shows how white text looks on a background with the HunterLab color 83.3502, 3.6242,

4.2408.

# Color Blindness Simulation

Color vision deficiency is a very complex topic, and I could not describe the different causes any better than Wikipedia does, so if you want to learn more, you should check out their [article about color blindness](#).

## Dichromacy



### Original Color

83.3502, 3.6242, 4.2408

### Protanopia

83.3635, -2.4468, 3.1683

### Deuteranopia

83.2660, 6.4066, 4.1899



## Tritanopia

83.4428, 6.0524, -0.1146

# Trichromacy



## Original Color

83.3502, 3.6242, 4.2408

## Protanomaly

83.5002, -0.4657, 3.8578

## Deuteranomaly

83.3567, 5.1828, 4.2757

## Tritanomaly

83.3443, 5.5251, 1.2854

# Monochromacy



## Original Color

83.3502, 3.6242, 4.2408

## Achromatopsia

84.1651, -4.4908, 4.5728

## Achromatomaly

83.7099, -1.3156, 4.0913

# CSS Examples

## Text

The CSS property to change the color of the text to HunterLab 83.3502, 3.6242, 4.2408 is called "color". The color property can be set on classes, ids or directly on the HTML element.

This example shows how text in the color `rgb(233, 212, 218)` looks like.

```
.text, #text, p{  
    color:rgb(233, 212, 218)  
}
```

If you want to add a text shadow in that color use the text-shadow property, you can generate a text shadow directly with our [CSS Text Shadow Generator](#).

Here you see how black text with a 4 pixel rgb(233, 212, 218) colored shadow looks like.

```
.shadow{ text-shadow: 4px 4px 2px rgb(233, 212, 218) }
```

## Border

The CSS property to change the border of an element to HunterLab 83.3502, 3.6242, 4.2408 is called "border". The border property can be set on classes, ids or directly on the HTML element.

This example shows the color as border, it can be applied via the CSS property "border" or "border-color".

```
.border, #border, table{ border:4px solid rgb(233, 212, 218) }
```



If only the border color should be changed use the property `border-color`.

```
.border{ border-color:rgb(233, 212, 218) }
```

If you want to add a box shadow in that color use:

Here you see how a box with a 4 pixel `rgb(233, 212, 218)` colored shadow looks like.

```
.boxshadow{ -moz-box-shadow:4px 4px 4px  
4px rgb(233, 212, 218); -webkit-box-  
shadow:4px 4px 4px 4px rgb(233, 212, 218);  
box-shadow:4px 4px 4px 4px rgb(233, 212,  
218) }
```

# Background

The CSS property to change the background color of an element to HunterLab 83.3502, 3.6242, 4.2408 is called "background". The background property can be set on classes, ids or directly on the HTML element.

```
.background, #background, body{  
background: rgb(233, 212, 218) }
```

If only the background color should be changed can be used:

```
.background{ background-color: rgb(233,  
212, 218) }
```

This example shows the color as background, it is applied via the CSS property "background".

To optimize and compress your CSS code, you can use our [online CSS compressor and optimizer](#) based on csstidy. If you want to create a linear or radial gradient as background or border, check our [CSS Gradient Generator](#).

Hey! You found this booklet interesting? Support Converting Colors with the new Membership Option!

The pro membership hides all ads, plus gives you double the colors in the color bucket, and more awesome pro features!

**[Learn more, Memberships starting at \\$2.50/m!](#)**

**Follow me  
on Twitter!**

@ConvertingColor