

Converting Colors

HunterLab(83.2430, 5.1846,
1.1560)

Have a look what the booklet for
HunterLab(83.2430, 5.1846, 1.1560)
contains.

HunterLab(83.2430, 5.1846, 1.1560)	3
<i>Conversions</i>	4
<i>Details</i>	6
<i>Harmonies</i>	12
<i>Previews</i>	24
<i>Color Blindness Simulation</i>	28
<i>CSS Examples</i>	31

Color

**HunterLab(83.2430, 5.1846,
1.1560)**

Conversions

Conversions Part 1

Format	Color
Hex	E9D3E0
RGB	233, 211, 224
RGB Percent	91%, 83%, 88%
CMY	0.0863, 0.1725, 0.1216
CMYK	0.00, 0.09, 0.04, 0.09
HSL	325°, 33%, 87%
HSV	325°, 9%, 91%
XYZ	70.3531, 69.2940, 80.1880
YIQ	219.0600, 8.9390, 8.7070

Conversions

Conversions Part 2

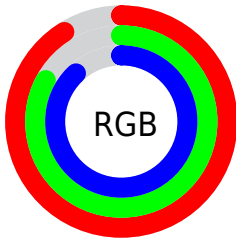
Format	Color
R _Y B	233, 211, 224
Decimal	15324128
CIE Lab	86.65, 9.83, -3.63
CIE LCh	87, 10.483, 339.747
Yxy	69.2970, 0.3200, 0.3152
Android (android.graphics.Color)	4293514208 (0xFFE9D3E0)
YUV	219.0600, 2.4354, 12.2254
Hunter-Lab	83.2430, 5.1846, 1.1560

Details

The HunterLab color $83.2430, 5.1846, 1.1560$ is a light color, and the websafe version is hex `CCCCCC`. A complement of this color would be $87.9181, -13.9207, 8.2662$, and the grayscale version is $84.1797, -4.4916, 4.5736$.

A 20% lighter version of the original color is $100.0000, -5.3358, 5.4332$, and $59.9905, 5.6486, -0.0330$ is the 20% darker color. If you saturate the color by 10%, you get $76.1863, 15.9721, -2.5282$, and if you desaturate by 10%, it is $90.6959, -5.4033, 5.1334$.

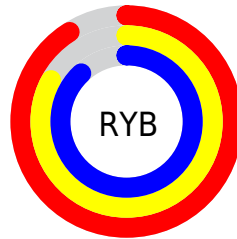
Distribution



Red (91%)

Green (83%)

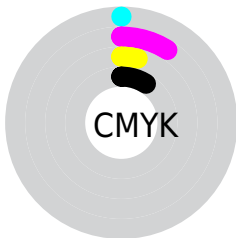
Blue (88%)



Red (91%)

Yellow (83%)

Blue (88%)

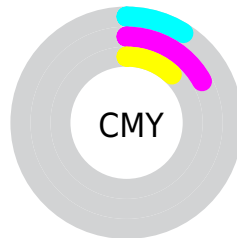


Cyan (0%)

Magenta (9%)

Yellow (4%)

Black (9%)



Cyan (9%)

Magenta (17%)

Yellow (12%)

Brightness & Saturation Gradients

These gradients show how the HunterLab color 83.2430, 5.1846, 1.1560 changes by changing the brightness by 10 percent. The first figure shows a shift by +10% for each color and the second figure -10%.

Similar to the brightness gradients but the following saturation gradients show a change of the HunterLab color 83.2430, 5.1846, 1.1560 by changing the saturation by 10% instead.

83.2430, 5.1846,
1.1560

83.2430, 5.1846,
1.1560

214.0275, 1.6237,
7.0720

71.3818, 5.3568,
0.6732

108.7224, 4.6801,
2.2424

60.1429, 5.4737,
0.2315

122.2865, 4.3596,
2.8388

49.5649, 5.5270,
-0.1643

136.3719, 3.9968,
3.4686

39.6921, 5.5087,
-0.5096

150.9601, 3.5941,
4.1303

30.5789, 5.4080,
-0.7988

166.0343, 3.1538,
4.8227

22.2949, 5.2103,
-1.0240

181.5793, 2.6775,

14.9333, 4.8936,

5.5444

-1.1742

197.5813, 2.1670,
6.2945

■ 8.5808, 4.6163,
-1.3059

0.0000, NaN, NaN

■ 83.2430, 5.1846,
1.1560

■ 83.2430, 5.1846,
1.1560

■ 76.1863, 15.9721,
-2.5282

■ 90.6959, -5.4033,
5.1334

■ 69.5878, 26.9058,
-5.8242

■ 97.6315, -14.4387,
8.3803

■ 63.5318, 37.8437,
-8.5940

■ 97.9339, -12.7563,
4.0642

■ 58.1157, 48.5195,
-10.6573

■ 98.0122, -12.3214,
2.9484

■ 53.4482, 58.4944,
-11.7970

■ 49.6377, 67.1442,
-11.7903

■ 46.7690, 73.7443,
-10.4793

■ 44.8687, 77.6991,
-7.8672

■ 43.8097, 79.0610,
-4.2637

Harmonies

Analogous

The Analogous color harmony consists of three colors that are next to each other on the color wheel.



83.2448, 2.0701, -3.1503



83.2430, 5.1846, 1.1560



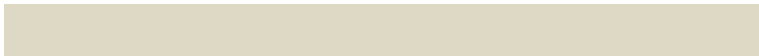
83.2448, 5.6800, 6.1318

Triad

The Triadic color harmony groups three colors that are evenly spaced from another and form a triangle on the color wheel.



83.2448, 5.1824, 1.1575



83.2448, -6.1389, 13.4039



83.2448, -12.0246, -1.8087

Complementary

The Complementary color scheme is a pair of colors which are on the opposite of each other on the color wheel.



83.2430, 5.1846, 1.1560



87.9181, -13.9207, 8.2662

Split Complementary

Split-complementary colors differ from the complementary color scheme. The scheme consists of three colors, the original color and two neighbors of the complement color.



83.2448, -14.1104, 2.8983



83.2430, 5.1846, 1.1560



83.2448, -10.7680, 11.5440

Square

The Square scheme is like the rectangle color scheme, but the four colors are evenly spaced on the color wheel.



83.2448, 5.1824, 1.1575



83.2448, -0.9427, 13.0014



83.2448, -13.6561, 7.7695



83.2448, -7.8926, -4.9346

Rectangle

The Rectangle color scheme consists of four colors that form a rectangle on the color wheel.



83.2430, 5.1846, 1.1560



83.2448, 4.4498, 9.1314



83.2448, -13.6561, 7.7695



83.2448, -12.9836, -0.3474

Sweetspot

The Sweet Spot groups the original color and five complimentary colors.



83.2448, 5.1824, 1.1575



97.4761, -1.8217, 4.0809



82.2554, 2.4451, -4.8399



44.7876, -0.4066, 1.7227

0.0000, NaN, NaN



46.2646, -2.4686, 2.5136

Same Dimension

The Same Dimension uses a secret algorithm to generate beautiful new colors.



83.2448, 5.1824, 1.1575



90.9250, 7.6557, 0.5991



82.9033, 3.3474, 6.0251



38.9916, 2.4428, 0.5370



33.0011, 59.7301, -3.5952



9.3499, 17.1065, -2.4423

Inverse Universe

The Inverse Universe completely reimagines the original color for something new.



83.2448, 5.1824, 1.1575



90.9250, 7.6557, 0.5991



88.2534, -12.0522, 3.4788



38.9916, 2.4428, 0.5370



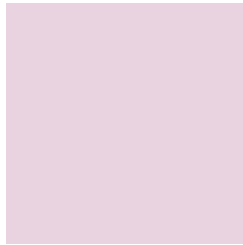
33.0011, 59.7301, -3.5952



9.3499, 17.1065, -2.4423

Previews

White Background



This preview shows how the HunterLab color 83.2430, 5.1846, 1.1560 looks on a white background.

Color Contrast Check

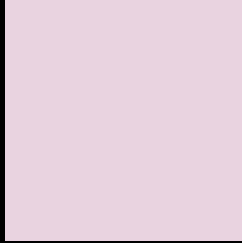
Large Text (above 18pt) WCAG AA × Fail

Any Text WCAG AA × Fail

Large Text (above 18pt) WCAG AAA × Fail

Any Text WCAG AAA × Fail

Black Background



This preview shows how the HunterLab color 83.2430, 5.1846, 1.1560 looks on a black background.

Color Contrast Check

Large Text (above 18pt) WCAG AA ✓ Pass

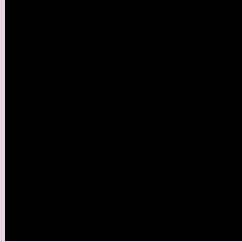
Any Text WCAG AA ✓ Pass

Large Text (above 18pt) WCAG AAA ✓ Pass

Any Text WCAG AAA ✓ Pass

If you want to check with other color combinations, try the [Color Contrast Checker](#).

HunterLab 83.2430, 5.1846, 1.1560 Background



This preview shows how black text looks on a background with the HunterLab color 83.2430, 5.1846, 1.1560.



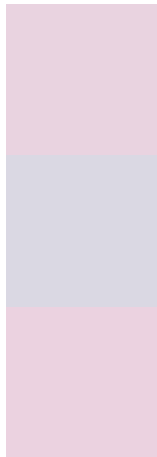
This preview shows how white text looks on a background with the HunterLab color 83.2430, 5.1846,

1.1560.

Color Blindness Simulation

Color vision deficiency is a very complex topic, and I could not describe the different causes any better than Wikipedia does, so if you want to learn more, you should check out their [article about color blindness](#).

Dichromacy



Original Color

83.2430, 5.1846, 1.1560

Protanopia

83.4046, -1.8508, -0.3002

Deuteranopia

83.1488, 6.3985, 1.0622



Tritanopia

83.3416, 5.7129, -0.2456

Trichromacy



Original Color

83.2430, 5.1846, 1.1560

Protanomaly

83.2299, 0.6255, 0.0411

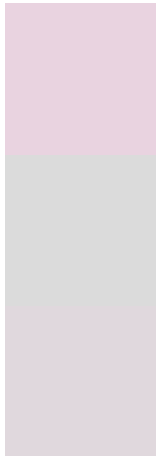
Deuteranomaly

83.0466, 6.0563, 0.9315

Tritanomaly

83.3086, 5.5359, 0.2240

Monochromacy



Original Color

83.2430, 5.1846, 1.1560

Achromatopsia

84.1651, -4.4908, 4.5728

Achromatomaly

83.7732, -0.9715, 3.1893

CSS Examples

Text

The CSS property to change the color of the text to HunterLab 83.2430, 5.1846, 1.1560 is called "color". The color property can be set on classes, ids or directly on the HTML element.

This example shows how text in the color `rgb(233, 211, 224)` looks like.

```
.text, #text, p{  
    color:rgb(233, 211, 224)  
}
```

If you want to add a text shadow in that color use the text-shadow property, you can generate a text shadow directly with our [CSS Text Shadow Generator](#).

Here you see how black text with a 4 pixel rgb(233, 211, 224) colored shadow looks like.

```
.shadow{ text-shadow: 4px 4px 2px rgb(233, 211, 224) }
```

Border

The CSS property to change the border of an element to HunterLab 83.2430, 5.1846, 1.1560 is called "border".

The border property can be set on classes, ids or directly on the HTML element.

This example shows the color as border, it can be applied via the CSS property "border" or "border-color".

```
.border, #border, table{ border:4px solid rgb(233, 211, 224) }
```


If only the border color should be changed use the property `border-color`.

```
.border{ border-color:rgb(233, 211, 224) }
```

If you want to add a box shadow in that color use:

Here you see how a box with a 4 pixel `rgb(233, 211, 224)` colored shadow looks like.

```
.boxshadow{ -moz-box-shadow:4px 4px 4px  
4px rgb(233, 211, 224); -webkit-box-  
shadow:4px 4px 4px 4px rgb(233, 211, 224);  
box-shadow:4px 4px 4px 4px rgb(233, 211,  
224) }
```

Background

The CSS property to change the background color of an element to HunterLab 83.2430, 5.1846, 1.1560 is called "background". The background property can be set on classes, ids or directly on the HTML element.

```
.background, #background, body{  
background: rgb(233, 211, 224) }
```

If only the background color should be changed can be used:

```
.background{ background-color: rgb(233,  
211, 224) }
```

This example shows the color as background, it is applied via the CSS property "background".

To optimize and compress your CSS code, you can use our [online CSS compressor and optimizer](#) based on csstidy. If you want to create a linear or radial gradient as background or border, check our [CSS Gradient Generator](#).

Hey! You found this booklet interesting? Support Converting Colors with the new Membership Option!

The pro membership hides all ads, plus gives you double the colors in the color bucket, and more awesome pro features!

[Learn more, Memberships starting at \\$2.50/m!](#)

**Follow me
on Twitter!**

@ConvertingColor