

# Converting Colors

HunterLab(83.2702, 5.3384,  
4.2966)

Have a look what the booklet for  
HunterLab(83.2702, 5.3384, 4.2966)  
contains.

<b>HunterLab(83.3567, 5.1828, 4.2757)</b> .....	3
<b><i>Conversions</i></b> .....	4
<b><i>Details</i></b> .....	6
<b><i>Harmonies</i></b> .....	12
<b><i>Previews</i></b> .....	24
<b><i>Color Blindness Simulation</i></b> .....	28
<b><i>CSS Examples</i></b> .....	31

# Color

**HunterLab(83.3567, 5.1828,  
4.2757)**

# Conversions

## Conversions Part 1

<b>Format</b>	<b>Color</b>
Hex	ECD3DA
RGB	236, 211, 218
RGB Percent	93%, 83%, 85%
CMY	0.0745, 0.1725, 0.1451
CMYK	0.00, 0.11, 0.08, 0.07
HSL	343°, 40%, 88%
HSV	343°, 11%, 93%
XYZ	70.5413, 69.4834, 76.0234
YIQ	219.2730, 12.6530, 7.4770

# Conversions

## Conversions Part 2

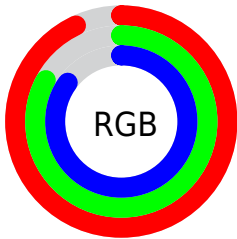
Format	Color
R <sub>Y</sub> B	236, 211, 218
Decimal	15520730
CIE Lab	86.74, 9.83, -0.29
CIE LCh	87, 9.839, 358.339
Yxy	69.4864, 0.3265, 0.3216
Android (android.graphics.Color)	4293710810 (0xFFECD3DA)
YUV	219.2730, -0.6276, 14.6696
Hunter-Lab	83.3567, 5.1828, 4.2757

# Details

The HunterLab color  $83.3567, 5.1828, 4.2757$  is a light color, and the websafe version is hex  $\text{FFCCCC}$ . A complement of this color would be  $89.1621, -13.8836, 5.4023$ , and the grayscale version is  $84.2838, -4.4972, 4.5793$ .

A 20% lighter version of the original color is  $100.0000, -5.3358, 5.4332$ , and  $60.1037, 5.6590, 2.9535$  is the 20% darker color. If you saturate the color by 10%, you get  $76.0022, 14.9409, 3.9830$ , and if you desaturate by 10%, it is  $91.1165, -4.3322, 4.9279$ .

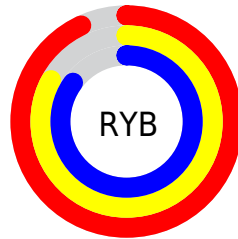
# Distribution



Red (93%)

Green (83%)

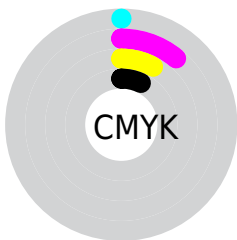
Blue (85%)



Red (93%)

Yellow (83%)

Blue (85%)

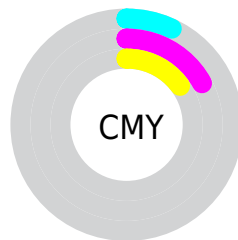


Cyan (0%)

Magenta (11%)

Yellow (8%)

Black (7%)



Cyan (7%)

Magenta (17%)

Yellow (15%)

# Brightness & Saturation Gradients

These gradients show how the HunterLab color 83.3567, 5.1828, 4.2757 changes by changing the brightness by 10 percent. The first figure shows a shift by +10% for each color and the second figure -10%.

Similar to the brightness gradients but the following saturation gradients show a change of the HunterLab color 83.3567, 5.1828, 4.2757 by changing the saturation by 10% instead.



83.3567, 5.1828,  
4.2757

83.3567, 5.1828,  
4.2757

214.1833, 1.6185,  
11.3023

71.4898, 5.3554,  
3.6440

108.8467, 4.6772,  
5.6404

60.2450, 5.4729,  
3.0456

122.4157, 4.3563,  
6.3676

49.6606, 5.5268,  
2.4840

136.5059, 3.9931,  
7.1237

39.7809, 5.5092,  
1.9617

151.0987, 3.5901,  
7.9075

30.6604, 5.4094,  
1.4821

166.1774, 3.1494,  
8.7181

22.3682, 5.2126,  
1.0493

181.7268, 2.6729,

14.9975, 4.8972,

9.5546

0.6689

197.7329, 2.1621,  
10.4162

■ 8.6409, 4.5947,  
0.3335

0.0000, NaN, NaN

■ 83.3567, 5.1828,  
4.2757

■ 83.3567, 5.1828,  
4.2757

■ 76.0022, 14.9409,  
3.9830

■ 91.1165, -4.3322,  
4.9279

■ 69.1199, 24.9139,  
4.1236

■ 98.1737, -11.9442,  
4.6704

■ 62.8012, 34.9904,  
4.7874

■ 98.2716, -11.4015,  
3.2754

■ 57.1547, 44.9372,  
6.0632

■ 52.3038, 54.3390,  
8.0151

■ 48.3746, 62.5731,  
10.6401

■ 45.4680, 68.8895,  
13.8180

■ 43.6172, 72.6666,  
17.2861

■ 42.6931, 74.0361,  
20.4340

# Harmonies

## Analogous

The Analogous color harmony consists of three colors that are next to each other on the color wheel.



83.3585, 3.7235, -0.3076



83.3567, 5.1828, 4.2757



83.3585, 4.0073, 8.6825

# Triad

The Triadic color harmony groups three colors that are evenly spaced from another and form a triangle on the color wheel.



83.3585, 5.1805, 4.2771



83.3585, -8.8796, 12.0499



83.3585, -9.3424, -3.4612

# Complementary

The Complementary color scheme is a pair of colors which are on the opposite of each other on the color wheel.



83.3567, 5.1828, 4.2757



89.1621, -13.8836, 5.4023

# Split Complementary

Split-complementary colors differ from the complementary color scheme. The scheme consists of three colors, the original color and two neighbors of the complement color.



83.3585, -12.5874, 0.1679



83.3567, 5.1828, 4.2757



83.3585, -12.3246, 9.1081

# Square

The Square scheme is like the rectangle color scheme, but the four colors are evenly spaced on the color wheel.



83.3585, 5.1805, 4.2771



83.3585, -4.1789, 13.0119



83.3585, -13.6665, 4.7969



83.3585, -4.7253, -4.9322



# Rectangle

The Rectangle color scheme consists of four colors that form a rectangle on the color wheel.



83.3567, 5.1828, 4.2757



83.3585, 1.9063, 10.9622



83.3585, -13.6665, 4.7969



83.3585, -10.6258, -2.4433

# Sweetspot

The Sweet Spot groups the original color and five complimentary colors.



83.3585, 5.1805, 4.2771



97.3992, -2.2403, 5.1768



83.2420, 5.9825, -5.1254



44.7425, -0.6518, 2.3657

0.0000, NaN, NaN



46.2646, -2.4686, 2.5136



# Same Dimension

The Same Dimension uses a secret algorithm to generate beautiful new colors.



83.3585, 5.1805, 4.2771



88.9942, 8.2569, 4.5517



84.7729, 1.1785, 9.1522



38.8887, 1.8907, 2.0014



31.7269, 55.0775, 14.7316



8.9796, 15.7615, 2.8281



# Inverse Universe

The Inverse Universe completely reimagines the original color for something new.



83.3585, 5.1805, 4.2771



88.9942, 8.2569, 4.5517



87.6504, -9.8841, 0.1562



38.8887, 1.8907, 2.0014



31.7269, 55.0775, 14.7316

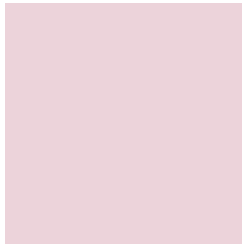


8.9796, 15.7615, 2.8281



# Previews

## White Background



This preview shows how the HunterLab color 83.3567, 5.1828, 4.2757 looks on a white background.

## Color Contrast Check

Large Text (above 18pt) WCAG AA × Fail

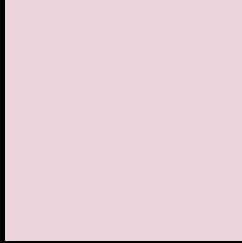
Any Text WCAG AA × Fail

Large Text (above 18pt) WCAG AAA × Fail

Any Text WCAG AAA × Fail



# Black Background



This preview shows how the HunterLab color 83.3567, 5.1828, 4.2757 looks on a black background.

## Color Contrast Check

Large Text (above 18pt) WCAG AA ✓ Pass

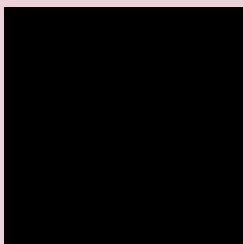
Any Text WCAG AA ✓ Pass

Large Text (above 18pt) WCAG AAA ✓ Pass

Any Text WCAG AAA ✓ Pass

If you want to check with other color combinations, try the [Color Contrast Checker](#).

## HunterLab 83.3567, 5.1828, 4.2757 Background



This preview shows how black text looks on a background with the HunterLab color 83.3567, 5.1828, 4.2757.



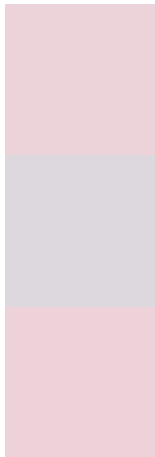
This preview shows how white text looks on a background with the HunterLab color 83.3567, 5.1828,

4.2757.

# Color Blindness Simulation

Color vision deficiency is a very complex topic, and I could not describe the different causes any better than Wikipedia does, so if you want to learn more, you should check out their [article about color blindness](#).

## Dichromacy



### Original Color

83.3567, 5.1828, 4.2757

### Protanopia

83.3953, -2.2730, 2.7143

### Deuteranopia

83.2660, 6.4066, 4.1899



## Tritanopia

83.4198, 7.4355, 0.3941

# Trichromacy



## Original Color

83.3567, 5.1828, 4.2757

## Protanomaly

83.3242, 0.5592, 3.1741

## Deuteranomaly

83.1623, 6.0592, 4.0610

## Tritanomaly

83.3219, 6.9127, 1.7869

# Monochromacy



## Original Color

83.3567, 5.1828, 4.2757

## Achromatopsia

84.1651, -4.4908, 4.5728

## Achromatomaly

83.8056, -0.9867, 4.2102

# CSS Examples

## Text

The CSS property to change the color of the text to HunterLab 83.3567, 5.1828, 4.2757 is called "color". The color property can be set on classes, ids or directly on the HTML element.

This example shows how text in the color `rgb(236, 211, 218)` looks like.

```
.text, #text, p{  
    color:rgb(236, 211, 218)  
}
```

If you want to add a text shadow in that color use the text-shadow property, you can generate a text shadow directly with our [CSS Text Shadow Generator](#).

Here you see how black text with a 4 pixel rgb(236, 211, 218) colored shadow looks like.

```
.shadow{ text-shadow: 4px 4px 2px rgb(236, 211, 218) }
```

## Border

The CSS property to change the border of an element to HunterLab 83.3567, 5.1828, 4.2757 is called "border".

The border property can be set on classes, ids or directly on the HTML element.

This example shows the color as border, it can be applied via the CSS property "border" or "border-color".

```
.border, #border, table{ border:4px solid rgb(236, 211, 218) }
```



If only the border color should be changed use the property border-color.

```
.border{ border-color:rgb(236, 211, 218) }
```

If you want to add a box shadow in that color use:

Here you see how a box with a 4 pixel rgb(236, 211, 218) colored shadow looks like.

```
.boxshadow{ -moz-box-shadow:4px 4px 4px  
4px rgb(236, 211, 218); -webkit-box-  
shadow:4px 4px 4px 4px rgb(236, 211, 218);  
box-shadow:4px 4px 4px 4px rgb(236, 211,  
218) }
```

# Background

The CSS property to change the background color of an element to HunterLab 83.3567, 5.1828, 4.2757 is called "background". The background property can be set on classes, ids or directly on the HTML element.

```
.background, #background, body{  
background: rgb(236, 211, 218) }
```

If only the background color should be changed can be used:

```
.background{ background-color: rgb(236,  
211, 218) }
```

This example shows the color as background, it is applied via the CSS property "background".

To optimize and compress your CSS code, you can use our [online CSS compressor and optimizer](#) based on csstidy. If you want to create a linear or radial gradient as background or border, check our [CSS Gradient Generator](#).

Hey! You found this booklet interesting? Support Converting Colors with the new Membership Option!

The pro membership hides all ads, plus gives you double the colors in the color bucket, and more awesome pro features!

**[Learn more, Memberships starting at \\$2.50/m!](#)**

**Follow me  
on Twitter!**

@ConvertingColor