

Converting Colors

HunterLab(83.5008, 3.8314,
6.8298)

Have a look what the booklet for
HunterLab(83.5008, 3.8314, 6.8298)
contains.

HunterLab(83.5009, 3.8244, 6.8214)	3
<i>Conversions</i>	4
<i>Details</i>	6
<i>Harmonies</i>	12
<i>Previews</i>	24
<i>Color Blindness Simulation</i>	28
<i>CSS Examples</i>	31

Color

**HunterLab(83.5009, 3.8244,
6.8214)**

Conversions

Conversions Part 1

Format	Color
Hex	ECD4D5
RGB	236, 212, 213
RGB Percent	93%, 83%, 84%
CMY	0.0745, 0.1686, 0.1647
CMYK	0.00, 0.10, 0.10, 0.07
HSL	358°, 39%, 88%
HSV	358°, 10%, 93%
XYZ	70.1459, 69.7240, 72.7119
YIQ	219.2900, 13.9830, 5.3990

Conversions

Conversions Part 2

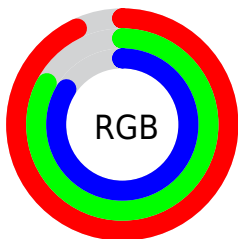
Format	Color
R _Y B	236, 212, 213
Decimal	15520981
CIE Lab	86.86, 8.48, 2.53
CIE LCh	87, 8.847, 16.641
Yxy	69.7271, 0.3300, 0.3280
Android (android.graphics.Color)	4293711061 (0xFFECD4D5)
YUV	219.2900, -3.1010, 14.6547
Hunter-Lab	83.5009, 3.8244, 6.8214

Details

The HunterLab color $83.5009, 3.8244, 6.8214$ is a light color, and the websafe version is hex `CCCCCC`. A complement of this color would be $89.4360, -12.5231, 2.7835$, and the grayscale version is $84.3011, -4.4981, 4.5802$.

A 20% lighter version of the original color is $100.0000, -5.3358, 5.4332$, and $60.2377, 4.3754, 5.3560$ is the 20% darker color. If you saturate the color by 10%, you get $75.9654, 12.7416, 8.8404$, and if you desaturate by 10%, it is $91.4502, -4.7461, 5.0050$.

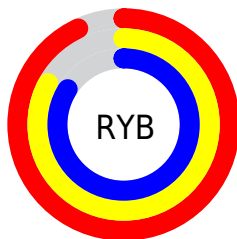
Distribution



Red (93%)

Green (83%)

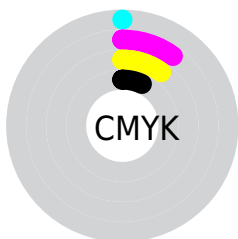
Blue (84%)



Red (93%)

Yellow (83%)

Blue (84%)

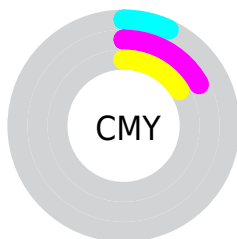


Cyan (0%)

Magenta (10%)

Yellow (10%)

Black (7%)



Cyan (7%)

Magenta (17%)

Yellow (16%)

Brightness & Saturation Gradients

These gradients show how the HunterLab color 83.5009, 3.8244, 6.8214 changes by changing the brightness by 10 percent. The first figure shows a shift by +10% for each color and the second figure -10%.

Similar to the brightness gradients but the following saturation gradients show a change of the HunterLab color 83.5009, 3.8244, 6.8214 by changing the saturation by 10% instead.

83.5009, 3.8244,
6.8214

83.5009, 3.8244,
6.8214

214.3808, -0.2101,
14.8088

71.6269, 4.0596,
6.0595

109.0043, 3.2014,
8.4283

60.3744, 4.2429,
5.3234

122.5796, 2.8251,
9.2691

49.7820, 4.3662,
4.6153

136.6759, 2.4085,
10.1345

39.8937, 4.4223,
3.9357

151.2746, 1.9538,
11.0237

30.7637, 4.4014,
3.2852

166.3589, 1.4630,
11.9363

22.4613, 4.2900,
2.6635

181.9137, 0.9378,

15.0789, 4.0678,

12.8717

2.0691

197.9252, 0.3796,
13.8293

■ 8.7164, 3.8345,
1.6793

0.0000, NaN, NaN

■ 83.5009, 3.8244,
6.8214

■ 83.5009, 3.8244,
6.8214

■ 75.9654, 12.7416,
8.8404

■ 91.4502, -4.7461,
5.0050

■ 68.9140, 22.0111,
11.0782

■ 98.2716, -11.4015,
3.2754

■ 62.4437, 31.5637,
13.5412

■ 56.6703, 41.2124,
16.2010

■ 51.7277, 50.5817,
18.9701

■ 47.7535, 59.0617,
21.6781

■ 44.8588, 65.8713,
24.0745

■ 43.0796, 70.3132,
25.8921

■ 42.2546, 72.4132,
26.9101

Harmonies

Analogous

The Analogous color harmony consists of three colors that are next to each other on the color wheel.



83.5027, 3.9526, 2.6597



83.5009, 3.8244, 6.8214



83.5027, 1.4429, 10.2008

Triad

The Triadic color harmony groups three colors that are evenly spaced from another and form a triangle on the color wheel.



83.5027, 3.8220, 6.8228



83.5027, -10.5371, 9.8967



83.5027, -6.4105, -3.6912

Complementary

The Complementary color scheme is a pair of colors which are on the opposite of each other on the color wheel.



83.5009, 3.8244, 6.8214



89.4360, -12.5231, 2.7835

Split Complementary

Split-complementary colors differ from the complementary color scheme. The scheme consists of three colors, the original color and two neighbors of the complement color.



83.5027, -10.2032, -1.5357



83.5009, 3.8244, 6.8214



83.5027, -12.5522, 6.3879

Square

The Square scheme is like the rectangle color scheme, but the four colors are evenly spaced on the color wheel.



83.5027, 3.8220, 6.8228



83.5027, -6.8748, 11.9114



83.5027, -12.4313, 2.2018



83.5027, -2.0174, -3.5598

Rectangle

The Rectangle color scheme consists of four colors that form a rectangle on the color wheel.



83.5009, 3.8244, 6.8214



83.5027, -1.0707, 11.6176



83.5027, -12.4313, 2.2018



83.5027, -7.7960, -3.2055

Sweetspot

The Sweet Spot groups the original color and five complimentary colors.



83.5027, 3.8220, 6.8228



97.3409, -2.5581, 6.0088



84.1275, 7.4138, -3.9597



44.7084, -0.8374, 2.8525

0.0000, NaN, NaN



46.2646, -2.4686, 2.5136

Same Dimension

The Same Dimension uses a secret algorithm to generate beautiful new colors.



83.5027, 3.8220, 6.8228



89.5876, 5.9769, 7.8468



86.7510, -1.9950, 10.8477



38.8126, 1.4809, 3.0886



31.3788, 53.7896, 19.8694



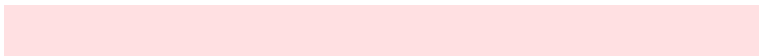
8.8133, 15.1483, 5.2666

Inverse Universe

The Inverse Universe completely reimagines the original color for something new.



83.5027, 3.8220, 6.8228



89.5876, 5.9769, 7.8468



86.0317, -6.8251, -1.7978



38.8126, 1.4809, 3.0886



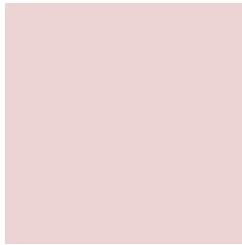
31.3788, 53.7896, 19.8694



8.8133, 15.1483, 5.2666

Previews

White Background



This preview shows how the HunterLab color 83.5009, 3.8244, 6.8214 looks on a white background.

Color Contrast Check

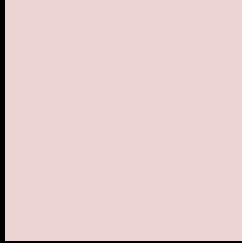
Large Text (above 18pt) WCAG AA × Fail

Any Text WCAG AA × Fail

Large Text (above 18pt) WCAG AAA × Fail

Any Text WCAG AAA × Fail

Black Background



This preview shows how the HunterLab color 83.5009, 3.8244, 6.8214 looks on a black background.

Color Contrast Check

Large Text (above 18pt) WCAG AA ✓ Pass

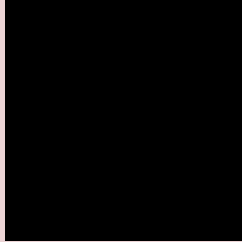
Any Text WCAG AA ✓ Pass

Large Text (above 18pt) WCAG AAA ✓ Pass

Any Text WCAG AAA ✓ Pass

If you want to check with other color combinations, try the [Color Contrast Checker](#).

HunterLab 83.5009, 3.8244, 6.8214 Background



This preview shows how black text looks on a background with the HunterLab color 83.5009, 3.8244, 6.8214.



This preview shows how white text looks on a background with the HunterLab color 83.5009, 3.8244,

6.8214.

Color Blindness Simulation

Color vision deficiency is a very complex topic, and I could not describe the different causes any better than Wikipedia does, so if you want to learn more, you should check out their [article about color blindness](#).

Dichromacy



Original Color

83.5009, 3.8244, 6.8214

Protanopia

83.7336, -2.9987, 5.5429

Deuteranopia

83.3202, 6.2785, 6.6561



Tritanopia

83.5232, 7.7802, 0.5272

Trichromacy



Original Color

83.5009, 3.8244, 6.8214

Protanomaly

83.5692, -0.4784, 5.8746

Deuteranomaly

83.5125, 5.3975, 6.8623

Tritanomaly

83.5545, 6.0369, 3.0504

Monochromacy



Original Color

83.5009, 3.8244, 6.8214

Achromatopsia

84.1651, -4.4908, 4.5728

Achromatomaly

83.7431, -1.3266, 5.1018

CSS Examples

Text

The CSS property to change the color of the text to HunterLab 83.5009, 3.8244, 6.8214 is called "color". The color property can be set on classes, ids or directly on the HTML element.

This example shows how text in the color `rgb(236, 212, 213)` looks like.

```
.text, #text, p{  
    color:rgb(236, 212, 213)  
}
```

If you want to add a text shadow in that color use the text-shadow property, you can generate a text shadow directly with our [CSS Text Shadow Generator](#).

Here you see how black text with a 4 pixel rgb(236, 212, 213) colored shadow looks like.

```
.shadow{ text-shadow: 4px 4px 2px rgb(236, 212, 213) }
```

Border

The CSS property to change the border of an element to HunterLab 83.5009, 3.8244, 6.8214 is called "border". The border property can be set on classes, ids or directly on the HTML element.

This example shows the color as border, it can be applied via the CSS property "border" or "border-color".

```
.border, #border, table{ border:4px solid rgb(236, 212, 213) }
```


If only the border color should be changed use the property `border-color`.

```
.border{ border-color:rgb(236, 212, 213) }
```

If you want to add a box shadow in that color use:

Here you see how a box with a 4 pixel `rgb(236, 212, 213)` colored shadow looks like.

```
.boxshadow{ -moz-box-shadow:4px 4px 4px  
4px rgb(236, 212, 213); -webkit-box-  
shadow:4px 4px 4px 4px rgb(236, 212, 213);  
box-shadow:4px 4px 4px 4px rgb(236, 212,  
213) }
```

Background

The CSS property to change the background color of an element to HunterLab 83.5009, 3.8244, 6.8214 is called "background". The background property can be set on classes, ids or directly on the HTML element.

```
.background, #background, body{  
background: rgb(236, 212, 213) }
```

If only the background color should be changed can be used:

```
.background{ background-color: rgb(236,  
212, 213) }
```

This example shows the color as background, it is applied via the CSS property "background".

To optimize and compress your CSS code, you can use our [online CSS compressor and optimizer](#) based on csstidy. If you want to create a linear or radial gradient as background or border, check our [CSS Gradient Generator](#).

Hey! You found this booklet interesting? Support Converting Colors with the new Membership Option!

The pro membership hides all ads, plus gives you double the colors in the color bucket, and more awesome pro features!

[Learn more, Memberships starting at \\$2.50/m!](#)

**Follow me
on Twitter!**

@ConvertingColor