

Converting Colors

HunterLab(83.5351, 1.9164,
6.7706)

Have a look what the booklet for
HunterLab(83.5351, 1.9164, 6.7706)
contains.

HunterLab(83.3957, 1.9231, 6.6670)	3
<i>Conversions</i>	4
<i>Details</i>	6
<i>Harmonies</i>	12
<i>Previews</i>	24
<i>Color Blindness Simulation</i>	28
<i>CSS Examples</i>	31

Color

**HunterLab(83.3957, 1.9231,
6.6670)**

Conversions

Conversions Part 1

Format	Color
Hex	E8D5D5
RGB	232, 213, 213
RGB Percent	91%, 84%, 84%
CMY	0.0902, 0.1647, 0.1647
CMYK	0.00, 0.08, 0.08, 0.09
HSL	0°, 29%, 87%
HSV	0°, 8%, 91%
XYZ	69.0832, 69.5484, 72.7339
YIQ	218.6810, 11.3240, 4.0280

Conversions

Conversions Part 2

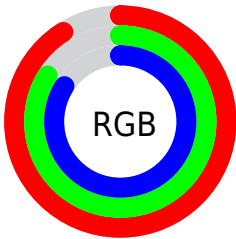
Format	Color
R _Y B	232, 213, 213
Decimal	15259093
CIE Lab	86.78, 6.56, 2.37
CIE LCh	87, 6.970, 19.852
Yxy	69.5515, 0.3268, 0.3290
Android (android.graphics.Color)	4293449173 (0xFFE8D5D5)
YUV	218.6810, -2.8007, 11.6808
Hunter-Lab	83.3957, 1.9231, 6.6670

Details

The HunterLab color **83.3957, 1.9231, 6.6670** is a light color, and the websafe version is hex **CCCCCC**. A complement of this color would be **88.1386, -10.7306, 2.7663**, and the grayscale version is **84.0367, -4.4840, 4.5659**.

A 20% lighter version of the original color is **100.0000, -5.3358, 5.4332**, and **60.1269, 2.5511, 5.1971** is the 20% darker color. If you saturate the color by 10%, you get **75.9012, 10.4506, 8.9880**, and if you desaturate by 10%, it is **91.2855, -6.2465, 4.4982**.

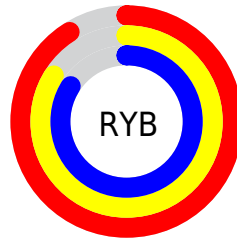
Distribution



Red (91%)

Green (84%)

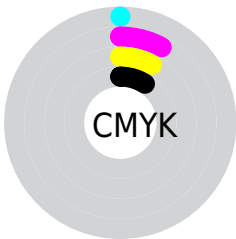
Blue (84%)



Red (91%)

Yellow (84%)

Blue (84%)

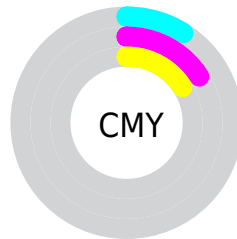


Cyan (0%)

Magenta (8%)

Yellow (8%)

Black (9%)



Cyan (9%)

Magenta (16%)

Yellow (16%)

Brightness & Saturation Gradients

These gradients show how the HunterLab color 83.3957, 1.9231, 6.6670 changes by changing the brightness by 10 percent. The first figure shows a shift by +10% for each color and the second figure -10%.

Similar to the brightness gradients but the following saturation gradients show a change of the HunterLab color 83.3957, 1.9231, 6.6670 by changing the saturation by 10% instead.

83.3957, 1.9231,
6.6670

83.3957, 1.9231,
6.6670

214.2367, -2.7713,
14.5953

71.5269, 2.2464,
5.9131

108.8894, 1.1353,
8.2590

60.2800, 2.5221,
5.1855

122.4600, 0.6813,
9.0928

49.6934, 2.7431,
4.4864

136.5519, 0.1897,
9.9514

39.8114, 2.9030,
3.8166

151.1463, -0.3376,
10.8342

30.6883, 2.9933,
3.1766

166.2265, -0.8987,
11.7405

22.3934, 3.0024,
2.5666

181.7773, -1.4923,

15.0195, 2.9124,

12.6698

1.9856

197.7849, -2.1169,
13.6216

■ 8.6614, 2.8436,
1.6043

0.0000, NaN, NaN

■ 83.3957, 1.9231,
6.6670

■ 83.3957, 1.9231,
6.6670

■ 75.9012, 10.4506,
8.9880

■ 91.2855, -6.2465,
4.4982

■ 68.8680, 19.3554,
11.4665

■ 97.9265, -12.6258,
2.8402

■ 62.3881, 28.5929,
14.0960

■ 56.5722, 38.0159,
16.8350

■ 51.5501, 47.3042,
19.5855

■ 47.4587, 55.9078,
22.1729

■ 44.4160, 63.0753,
24.3538

■ 42.4752, 68.0634,
25.8830

■ 41.5421, 70.5935,
26.6618

Harmonies

Analogous

The Analogous color harmony consists of three colors that are next to each other on the color wheel.



83.3975, 2.2222, 3.4124



83.3957, 1.9231, 6.6670



83.3975, -0.1044, 9.2513

Triad

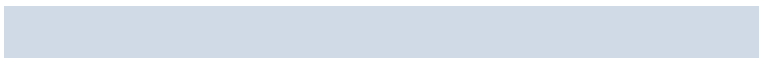
The Triadic color harmony groups three colors that are evenly spaced from another and form a triangle on the color wheel.



83.3975, 1.9208, 6.6684



83.3975, -9.4982, 8.5329



83.3975, -5.6278, -1.9595

Complementary

The Complementary color scheme is a pair of colors which are on the opposite of each other on the color wheel.



83.3957, 1.9231, 6.6670



88.1386, -10.7306, 2.7663

Split Complementary

Split-complementary colors differ from the complementary color scheme. The scheme consists of three colors, the original color and two neighbors of the complement color.



83.3975, -8.7170, -0.4642



83.3957, 1.9231, 6.6670



83.3975, -10.9272, 5.6512

Square

The Square scheme is like the rectangle color scheme, but the four colors are evenly spaced on the color wheel.



83.3975, 1.9208, 6.6684



83.3975, -6.7103, 10.2968



83.3975, -10.6436, 2.3531



83.3975, -2.1742, -1.6599

Rectangle

The Rectangle color scheme consists of four colors that form a rectangle on the color wheel.



83.3957, 1.9231, 6.6670



83.3975, -2.1414, 10.2864



83.3975, -10.6436, 2.3531



83.3975, -6.7423, -1.6478

Sweetspot

The Sweet Spot groups the original color and five complimentary colors.



83.3975, 1.9208, 6.6684



98.2169, -3.5251, 5.9119



84.0068, 5.2092, -2.0265



45.4803, -1.6725, 2.7241

0.0000, NaN, NaN



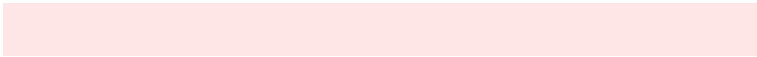
46.2646, -2.4686, 2.5136

Same Dimension

The Same Dimension uses a secret algorithm to generate beautiful new colors.



83.3975, 1.9208, 6.6684



91.2491, 3.8750, 7.8910



86.2957, -3.0305, 9.8705



37.9058, 1.3681, 3.1970



30.8627, 52.8463, 19.9426



8.3908, 14.3620, 5.4218

Inverse Universe

The Inverse Universe completely reimagines the original color for something new.



88.1386, -10.7306, 2.7663



97.7122, -13.3788, 2.5694



85.1363, -5.8693, -0.8097



40.4177, -5.3364, 1.1291



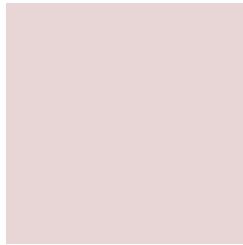
59.3793, -31.4714, -6.2811



16.1422, -8.5558, -1.7067

Previews

White Background



This preview shows how the HunterLab color 83.3957, 1.9231, 6.6670 looks on a white background.

Color Contrast Check

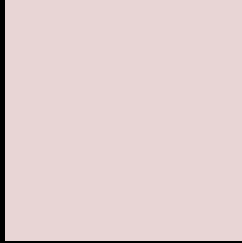
Large Text (above 18pt) WCAG AA × Fail

Any Text WCAG AA × Fail

Large Text (above 18pt) WCAG AAA × Fail

Any Text WCAG AAA × Fail

Black Background



This preview shows how the HunterLab color 83.3957, 1.9231, 6.6670 looks on a black background.

Color Contrast Check

Large Text (above 18pt) WCAG AA ✓ Pass

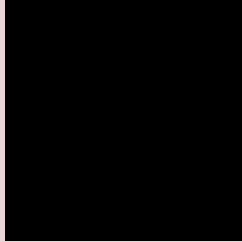
Any Text WCAG AA ✓ Pass

Large Text (above 18pt) WCAG AAA ✓ Pass

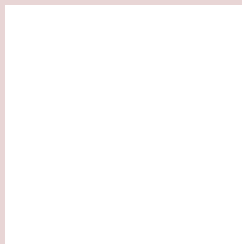
Any Text WCAG AAA ✓ Pass

If you want to check with other color combinations, try the [Color Contrast Checker](#).

HunterLab 83.3957, 1.9231, 6.6670 Background



This preview shows how black text looks on a background with the HunterLab color 83.3957, 1.9231, 6.6670.



This preview shows how white text looks on a background with the HunterLab color 83.3957, 1.9231,

6.6670.

Color Blindness Simulation

Color vision deficiency is a very complex topic, and I could not describe the different causes any better than Wikipedia does, so if you want to learn more, you should check out their [article about color blindness](#).

Dichromacy



Original Color

83.3957, 1.9231, 6.6670

Protanopia

83.3952, -2.6501, 5.6343

Deuteranopia

83.3508, 6.4420, 6.2194



Tritanopia

83.4428, 6.0524, -0.1146

Trichromacy



Original Color

83.3957, 1.9231, 6.6670

Protanomaly

83.4414, -0.9785, 6.1945

Deuteranomaly

83.3355, 4.8634, 6.1741

Tritanomaly

83.4773, 4.3074, 2.4301

Monochromacy



Original Color

83.3957, 1.9231, 6.6670

Achromatopsia

84.1651, -4.4908, 4.5728

Achromatomaly

83.9540, -2.1751, 5.3337

CSS Examples

Text

The CSS property to change the color of the text to HunterLab 83.3957, 1.9231, 6.6670 is called "color". The color property can be set on classes, ids or directly on the HTML element.

This example shows how text in the color `rgb(232, 213, 213)` looks like.

```
.text, #text, p{  
    color:rgb(232, 213, 213)  
}
```

If you want to add a text shadow in that color use the text-shadow property, you can generate a text shadow directly with our [CSS Text Shadow Generator](#).

Here you see how black text with a 4 pixel rgb(232, 213, 213) colored shadow looks like.

```
.shadow{ text-shadow: 4px 4px 2px rgb(232, 213, 213) }
```

Border

The CSS property to change the border of an element to HunterLab 83.3957, 1.9231, 6.6670 is called "border". The border property can be set on classes, ids or directly on the HTML element.

This example shows the color as border, it can be applied via the CSS property "border" or "border-color".

```
.border, #border, table{ border:4px solid rgb(232, 213, 213) }
```


If only the border color should be changed use the property `border-color`.

```
.border{ border-color:rgb(232, 213, 213) }
```

If you want to add a box shadow in that color use:

Here you see how a box with a 4 pixel `rgb(232, 213, 213)` colored shadow looks like.

```
.boxshadow{ -moz-box-shadow:4px 4px 4px  
4px rgb(232, 213, 213); -webkit-box-  
shadow:4px 4px 4px 4px rgb(232, 213, 213);  
box-shadow:4px 4px 4px 4px rgb(232, 213,  
213) }
```

Background

The CSS property to change the background color of an element to HunterLab 83.3957, 1.9231, 6.6670 is called "background". The background property can be set on classes, ids or directly on the HTML element.

```
.background, #background, body{  
background: rgb(232, 213, 213) }
```

If only the background color should be changed can be used:

```
.background{ background-color: rgb(232,  
213, 213) }
```

This example shows the color as background, it is applied via the CSS property "background".

To optimize and compress your CSS code, you can use our [online CSS compressor and optimizer](#) based on csstidy. If you want to create a linear or radial gradient as background or border, check our [CSS Gradient Generator](#).

Hey! You found this booklet interesting? Support Converting Colors with the new Membership Option!

The pro membership hides all ads, plus gives you double the colors in the color bucket, and more awesome pro features!

[Learn more, Memberships starting at \\$2.50/m!](#)

**Follow me
on Twitter!**

@ConvertingColor