

# Converting Colors

HunterLab(83.5602, 1.2202,  
4.4389)

Have a look what the booklet for  
HunterLab(83.5602, 1.2202, 4.4389)  
contains.

<b>HunterLab(83.5542, 1.2184, 4.4396)</b> .....	3
<b><i>Conversions</i></b> .....	4
<b><i>Details</i></b> .....	6
<b><i>Harmonies</i></b> .....	12
<b><i>Previews</i></b> .....	24
<b><i>Color Blindness Simulation</i></b> .....	28
<b><i>CSS Examples</i></b> .....	31

# Color

**HunterLab(83.5542, 1.2184,  
4.4396)**

# Conversions

## Conversions Part 1

<b>Format</b>	<b>Color</b>
Hex	E5D6DA
RGB	229, 214, 218
RGB Percent	90%, 84%, 85%
CMY	0.1020, 0.1608, 0.1451
CMYK	0.00, 0.07, 0.05, 0.10
HSL	344°, 22%, 87%
HSV	344°, 7%, 90%
XYZ	69.0145, 69.8130, 76.1674
YIQ	218.9410, 7.6560, 4.4240

# Conversions

## Conversions Part 2

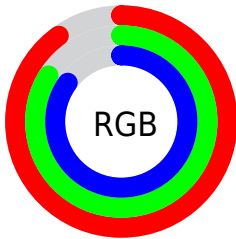
Format	Color
RYB	229, 214, 218
Decimal	15062746
CIELab	86.91, 5.85, -0.12
CIELCh	87, 5.847, 358.849
Yxy	69.8161, 0.3210, 0.3247
Android (android.graphics.Color)	4293252826 (0xFFE5D6DA)
YUV	218.9410, -0.4639, 8.8217
Hunter-Lab	83.5542, 1.2184, 4.4396

# Details

The HunterLab color  $83.5542, 1.2184, 4.4396$  is a light color, and the websafe version is hex `CCCCCC`. A complement of this color would be  $87.0475, -10.1360, 4.9392$ , and the grayscale version is  $84.1406, -4.4895, 4.5715$ .

A 20% lighter version of the original color is  $100.0000, -5.3358, 5.4332$ , and  $60.3650, 2.1875, 3.2016$  is the 20% darker color. If you saturate the color by 10%, you get  $76.2839, 10.4887, 4.1434$ , and if you desaturate by 10%, it is  $91.1912, -7.8124, 5.0519$ .

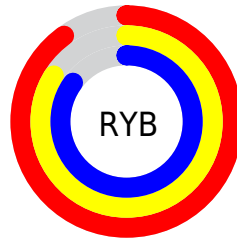
# Distribution



Red (90%)

Green (84%)

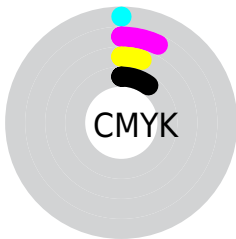
Blue (85%)



Red (90%)

Yellow (84%)

Blue (85%)

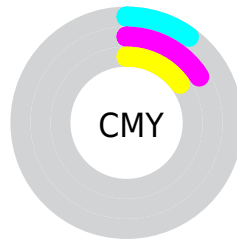


Cyan (0%)

Magenta (7%)

Yellow (5%)

Black (10%)



Cyan (10%)

Magenta (16%)

Yellow (15%)

# Brightness & Saturation Gradients

These gradients show how the HunterLab color 83.5542, 1.2184, 4.4396 changes by changing the brightness by 10 percent. The first figure shows a shift by +10% for each color and the second figure -10%.

Similar to the brightness gradients but the following saturation gradients show a change of the HunterLab color 83.5542, 1.2184, 4.4396 by changing the saturation by 10% instead.



83.5542, 1.2184,  
4.4396

83.5542, 1.2184,  
4.4396

214.4537, -3.7262,  
11.5266

71.6775, 1.5753,  
3.7997

109.0626, 0.3680,  
5.8194

60.4222, 1.8863,  
3.1927

122.6402, -0.1155,  
6.5538

49.8268, 2.1446,  
2.6220

136.7387, -0.6355,  
7.3168

39.9353, 2.3443,  
2.0899

151.3395, -1.1903,  
8.1072

30.8019, 2.4775,  
1.5997

166.4259, -1.7781,  
8.9242

22.4957, 2.5332,  
1.1552

181.9828, -2.3975,

15.1091, 2.4949,

9.7669

0.7617

197.9963, -3.0473,  
10.6346

■ 8.7441, 2.4522,  
0.4203

0.0000, NaN, NaN

■ 83.5542, 1.2184,  
4.4396

■ 83.5542, 1.2184,  
4.4396

■ 76.2839, 10.4887,  
4.1434

■ 91.1912, -7.8124,  
5.0519

■ 69.4385, 19.9911,  
4.2271

■ 97.5607, -14.1510,  
4.1034

■ 63.0991, 29.6544,  
4.7706

■ 97.6720, -13.5315,  
2.5182

■ 57.3630, 39.3122,  
5.8567

■ 52.3445, 48.6453,  
7.5539

■ 48.1666, 57.1373,  
9.8825

■ 44.9414, 64.0980,  
12.7689

■ 42.7342, 68.8352,  
16.0090

■ 41.5125, 71.0002,  
19.2786

# Harmonies

## Analogous

The Analogous color harmony consists of three colors that are next to each other on the color wheel.



83.5560, 0.3891, 1.7422



83.5542, 1.2184, 4.4396



83.5560, 0.5043, 7.0806

# Triad

The Triadic color harmony groups three colors that are evenly spaced from another and form a triangle on the color wheel.



83.5560, 1.2162, 4.4410



83.5560, -7.1505, 9.0856



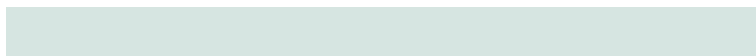
83.5560, -7.3430, -0.1456

# Complementary

The Complementary color scheme is a pair of colors which are on the opposite of each other on the color wheel.



83.5542, 1.2184, 4.4396



87.0475, -10.1360, 4.9392

# Split Complementary

Split-complementary colors differ from the complementary color scheme. The scheme consists of three colors, the original color and two neighbors of the complement color.



83.5560, -9.3166, 1.9340



83.5542, 1.2184, 4.4396



83.5560, -9.2065, 7.2601

# Square

The Square scheme is like the rectangle color scheme, but the four colors are evenly spaced on the color wheel.



83.5560, 1.2162, 4.4410



83.5560, -4.3502, 9.7062



83.5560, -9.9941, 4.6552



83.5560, -4.5754, -0.9612



# Rectangle

The Rectangle color scheme consists of four colors that form a rectangle on the color wheel.



83.5542, 1.2184, 4.4396



83.5560, -0.7417, 8.4649



83.5560, -9.9941, 4.6552



83.5560, -8.1199, 0.4322

# Sweetspot

The Sweet Spot groups the original color and five complimentary colors.



83.5560, 1.2162, 4.4410



98.2601, -3.2868, 5.2904



83.5230, 1.8163, -1.1236



45.4993, -1.5677, 2.4507

0.0000, NaN, NaN



46.2646, -2.4686, 2.5136



# Same Dimension

The Same Dimension uses a secret algorithm to generate beautiful new colors.



83.5560, 1.2162, 4.4410



93.1350, 2.9266, 4.9424



84.4983, -1.2777, 7.4034



37.9878, 1.8143, 2.0157



31.1995, 54.1026, 14.9469



8.5698, 15.0331, 2.7693



# Inverse Universe

The Inverse Universe completely reimagines the original color for something new.



83.5560, 1.2162, 4.4410



93.1350, 2.9266, 4.9424



86.0677, -7.6460, 1.8345



37.9878, 1.8143, 2.0157



31.1995, 54.1026, 14.9469

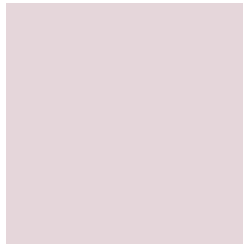


8.5698, 15.0331, 2.7693



# Previews

## White Background



This preview shows how the HunterLab color 83.5542, 1.2184, 4.4396 looks on a white background.

## Color Contrast Check

Large Text (above 18pt) WCAG AA × Fail

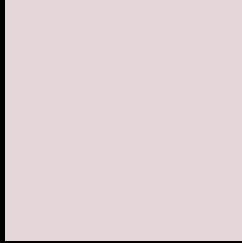
Any Text WCAG AA × Fail

Large Text (above 18pt) WCAG AAA × Fail

Any Text WCAG AAA × Fail



# Black Background



This preview shows how the HunterLab color 83.5542, 1.2184, 4.4396 looks on a black background.

## Color Contrast Check

Large Text (above 18pt) WCAG AA ✓ Pass

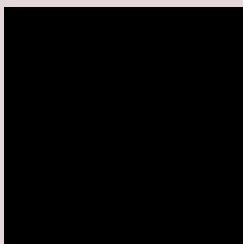
Any Text WCAG AA ✓ Pass

Large Text (above 18pt) WCAG AAA ✓ Pass

Any Text WCAG AAA ✓ Pass

If you want to check with other color combinations, try the [Color Contrast Checker](#).

## HunterLab 83.5542, 1.2184, 4.4396 Background



This preview shows how black text looks on a background with the HunterLab color 83.5542, 1.2184, 4.4396.



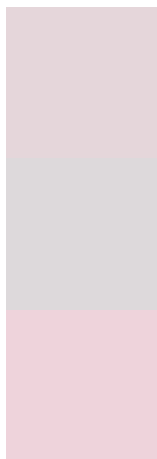
This preview shows how white text looks on a background with the HunterLab color 83.5542, 1.2184,

4.4396.

# Color Blindness Simulation

Color vision deficiency is a very complex topic, and I could not describe the different causes any better than Wikipedia does, so if you want to learn more, you should check out their [article about color blindness](#).

## Dichromacy



### Original Color

83.5542, 1.2184, 4.4396

### Protanopia

83.7331, -2.8134, 4.0925

### Deuteranopia

83.5943, 6.0438, 4.0833



## Tritanopia

83.5063, 4.8643, -1.0905

# Trichromacy



## Original Color

83.5542, 1.2184, 4.4396

## Protanomaly

83.7099, -1.3156, 4.0913

## Deuteranomaly

83.5845, 4.4780, 4.0442

## Tritanomaly

83.5750, 3.2887, 1.0209

# Monochromacy



## Original Color

83.5542, 1.2184, 4.4396

## Achromatopsia

84.1651, -4.4908, 4.5728

## Achromatomaly

83.9215, -2.1626, 4.3265

# CSS Examples

## Text

The CSS property to change the color of the text to HunterLab 83.5542, 1.2184, 4.4396 is called "color". The color property can be set on classes, ids or directly on the HTML element.

This example shows how text in the color `rgb(229, 214, 218)` looks like.

```
.text, #text, p{  
    color:rgb(229, 214, 218)  
}
```

If you want to add a text shadow in that color use the text-shadow property, you can generate a text shadow directly with our [CSS Text Shadow Generator](#).

Here you see how black text with a 4 pixel rgb(229, 214, 218) colored shadow looks like.

```
.shadow{ text-shadow: 4px 4px 2px rgb(229, 214, 218) }
```

## Border

The CSS property to change the border of an element to HunterLab 83.5542, 1.2184, 4.4396 is called "border".

The border property can be set on classes, ids or directly on the HTML element.

This example shows the color as border, it can be applied via the CSS property "border" or "border-color".

```
.border, #border, table{ border:4px solid rgb(229, 214, 218) }
```



If only the border color should be changed use the property `border-color`.

```
.border{ border-color:rgb(229, 214, 218) }
```

If you want to add a box shadow in that color use:

Here you see how a box with a 4 pixel `rgb(229, 214, 218)` colored shadow looks like.

```
.boxshadow{ -moz-box-shadow:4px 4px 4px  
4px rgb(229, 214, 218); -webkit-box-  
shadow:4px 4px 4px 4px rgb(229, 214, 218);  
box-shadow:4px 4px 4px 4px rgb(229, 214,  
218) }
```

# Background

The CSS property to change the background color of an element to HunterLab 83.5542, 1.2184, 4.4396 is called "background". The background property can be set on classes, ids or directly on the HTML element.

```
.background, #background, body{  
background: rgb(229, 214, 218) }
```

If only the background color should be changed can be used:

```
.background{ background-color: rgb(229,  
214, 218) }
```

This example shows the color as background, it is applied via the CSS property "background".

To optimize and compress your CSS code, you can use our [online CSS compressor and optimizer](#) based on csstidy. If you want to create a linear or radial gradient as background or border, check our [CSS Gradient Generator](#).

Hey! You found this booklet interesting? Support Converting Colors with the new Membership Option!

The pro membership hides all ads, plus gives you double the colors in the color bucket, and more awesome pro features!

**[Learn more, Memberships starting at \\$2.50/m!](#)**

**Follow me  
on Twitter!**

@ConvertingColor