

Converting Colors

HunterLab(83.5631, 3.6989,
4.6477)

Have a look what the booklet for
HunterLab(83.5631, 3.6989, 4.6477)
contains.

HunterLab(83.4514, 3.9661, 4.3663)	3
<i>Conversions</i>	4
<i>Details</i>	6
<i>Harmonies</i>	12
<i>Previews</i>	24
<i>Color Blindness Simulation</i>	28
<i>CSS Examples</i>	31

Color

**HunterLab(83.4514, 3.9661,
4.3663)**

Conversions

Conversions Part 1

Format	Color
Hex	EAD4DA
RGB	234, 212, 218
RGB Percent	92%, 83%, 85%
CMY	0.0823, 0.1686, 0.1451
CMYK	0.00, 0.09, 0.07, 0.08
HSL	344°, 34%, 87%
HSV	344°, 9%, 92%
XYZ	70.1301, 69.6414, 76.0756
YIQ	219.2620, 11.1860, 6.5300

Conversions

Conversions Part 2

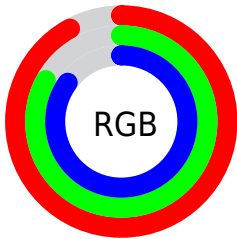
Format	Color
RYB	234, 212, 218
Decimal	15389914
CIELab	86.82, 8.62, -0.19
CIElCh	87, 8.620, 358.726
Yxy	69.6444, 0.3249, 0.3226
Android (android.graphics.Color)	4293579994 (0xFFEAD4DA)
YUV	219.2620, -0.6222, 12.9252
Hunter-Lab	83.4514, 3.9661, 4.3663

Details

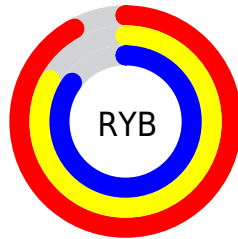
The HunterLab color $83.4514, 3.9661, 4.3663$ is a light color, and the websafe version is hex `CCCCCC`. A complement of this color would be $88.5697, -12.7518, 5.2161$, and the grayscale version is $84.2794, -4.4969, 4.5791$.

A 20% lighter version of the original color is $100.0000, -5.3358, 5.4332$, and $60.1858, 4.4930, 3.0302$ is the 20% darker color. If you saturate the color by 10%, you get $76.1147, 13.5707, 4.1047$, and if you desaturate by 10%, it is $91.1819, -5.3947, 4.9732$.

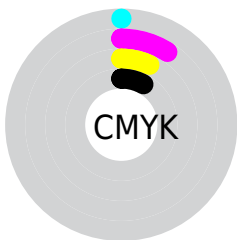
Distribution



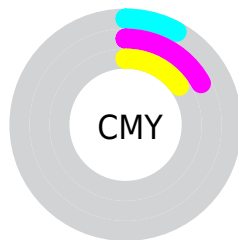
- Red (92%)
- Green (83%)
- Blue (85%)



- Red (92%)
- Yellow (83%)
- Blue (85%)



- Cyan (0%)
- Magenta (9%)
- Yellow (7%)
- Black (8%)



- Cyan (8%)
- Magenta (17%)
- Yellow (15%)

Brightness & Saturation Gradients

These gradients show how the HunterLab color 83.4514, 3.9661, 4.3663 changes by changing the brightness by 10 percent. The first figure shows a shift by +10% for each color and the second figure -10%.

Similar to the brightness gradients but the following saturation gradients show a change of the HunterLab color 83.4514, 3.9661, 4.3663 by changing the saturation by 10% instead.

83.4514, 3.9661,
4.3663

83.4514, 3.9661,
4.3663

214.3130, -0.0183,
11.4263

71.5798, 4.1947,
3.7301

108.9502, 3.3557,
5.7394

60.3299, 4.3709,
3.1269

122.5233, 2.9853,
6.4706

49.7403, 4.4868,
2.5603

136.6175, 2.5744,
7.2304

39.8550, 4.5350,
2.0326

151.2142, 2.1252,
8.0179

30.7282, 4.5056,
1.5471

166.2966, 1.6397,
8.8320

22.4293, 4.3850,
1.1079

181.8495, 1.1196,

15.0509, 4.1527,

9.6719

0.7202

197.8592, 0.5665,
10.5369

■ 8.6905, 3.9184,
0.3817

0.0000, NaN, NaN

■ 83.4514, 3.9661,
4.3663

■ 83.4514, 3.9661,
4.3663

■ 76.1147, 13.5707,
4.1047

■ 91.1819, -5.3947,
4.9732

■ 69.2358, 23.3982,
4.2586

■ 98.0019, -12.5508,
4.4297

■ 62.9034, 33.3508,
4.9140

■ 98.0982, -12.0160,
3.0569

■ 57.2227, 43.2167,
6.1570

■ 52.3149, 52.6109,
8.0514

■ 48.3057, 60.9418,
10.5997

■ 45.3005, 67.4727,
13.6938

■ 43.3430, 71.5526,
17.0868

■ 42.3114, 73.1712,
20.3856

Harmonies

Analogous

The Analogous color harmony consists of three colors that are next to each other on the color wheel.



83.4532, 2.7218, 0.3589



83.4514, 3.9661, 4.3663



83.4532, 2.9117, 8.2322

Triad

The Triadic color harmony groups three colors that are evenly spaced from another and form a triangle on the color wheel.



83.4532, 3.9638, 4.3677



83.4532, -8.3910, 11.1446



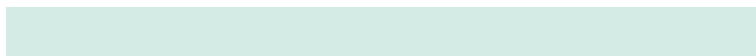
83.4532, -8.7030, -2.4575

Complementary

The Complementary color scheme is a pair of colors which are on the opposite of each other on the color wheel.



83.4514, 3.9661, 4.3663



88.5697, -12.7518, 5.2161

Split Complementary

Split-complementary colors differ from the complementary color scheme. The scheme consists of three colors, the original color and two neighbors of the complement color.



83.4532, -11.5792, 0.6764



83.4514, 3.9661, 4.3663



83.4532, -11.4017, 8.5203

Square

The Square scheme is like the rectangle color scheme, but the four colors are evenly spaced on the color wheel.



83.4532, 3.9638, 4.3677



83.4532, -4.2736, 12.0239



83.4532, -12.5573, 4.7171



83.4532, -4.6409, -3.7026

Rectangle

The Rectangle color scheme consists of four colors that form a rectangle on the color wheel.



83.4514, 3.9661, 4.3663



83.4532, 1.0627, 10.2359



83.4532, -12.5573, 4.7171



83.4532, -9.8375, -1.5824

Sweetspot

The Sweet Spot groups the original color and five complimentary colors.



83.4532, 3.9638, 4.3677



97.3974, -2.2500, 5.2024



83.3586, 4.6980, -3.9193



44.7414, -0.6575, 2.3806

0.0000, NaN, NaN



46.2646, -2.4686, 2.5136

Same Dimension

The Same Dimension uses a secret algorithm to generate beautiful new colors.



83.4532, 3.9638, 4.3677



90.6343, 6.1005, 4.7392



84.7079, 0.4701, 8.6051



38.8864, 1.8780, 2.0350



31.7089, 55.0113, 14.9953



8.9735, 15.7390, 2.9173

Inverse Universe

The Inverse Universe completely reimagines the original color for something new.



83.4532, 3.9638, 4.3677



90.6343, 6.1005, 4.7392



87.2396, -9.2610, 0.6908



38.8864, 1.8780, 2.0350



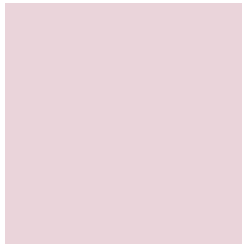
31.7089, 55.0113, 14.9953



8.9735, 15.7390, 2.9173

Previews

White Background



This preview shows how the HunterLab color 83.4514, 3.9661, 4.3663 looks on a white background.

Color Contrast Check

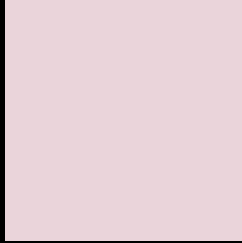
Large Text (above 18pt) WCAG AA × Fail

Any Text WCAG AA × Fail

Large Text (above 18pt) WCAG AAA × Fail

Any Text WCAG AAA × Fail

Black Background



This preview shows how the HunterLab color 83.4514, 3.9661, 4.3663 looks on a black background.

Color Contrast Check

Large Text (above 18pt) WCAG AA ✓ Pass

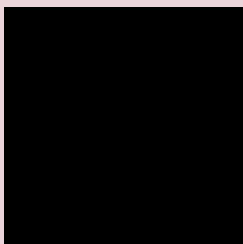
Any Text WCAG AA ✓ Pass

Large Text (above 18pt) WCAG AAA ✓ Pass

Any Text WCAG AAA ✓ Pass

If you want to check with other color combinations, try the [Color Contrast Checker](#).

HunterLab 83.4514, 3.9661, 4.3663 Background



This preview shows how black text looks on a background with the HunterLab color 83.4514, 3.9661, 4.3663.



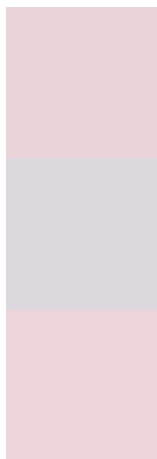
This preview shows how white text looks on a background with the HunterLab color 83.4514, 3.9661,

4.3663.

Color Blindness Simulation

Color vision deficiency is a very complex topic, and I could not describe the different causes any better than Wikipedia does, so if you want to learn more, you should check out their [article about color blindness](#).

Dichromacy



Original Color

83.4514, 3.9661, 4.3663

Protanopia

83.3953, -2.2730, 2.7143

Deuteranopia

83.5629, 5.8756, 4.5314



Tritanopia

83.5444, 6.3930, 0.0169

Trichromacy



Original Color

83.4514, 3.9661, 4.3663

Protanomaly

83.5319, -0.2939, 3.4069

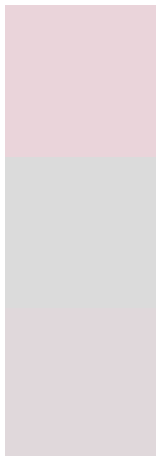
Deuteranomaly

83.4596, 5.5287, 4.4033

Tritanomaly

83.4461, 5.8667, 1.4153

Monochromacy



Original Color

83.4514, 3.9661, 4.3663

Achromatopsia

84.1651, -4.4908, 4.5728

Achromatomaly

83.7099, -1.3156, 4.0913

CSS Examples

Text

The CSS property to change the color of the text to HunterLab 83.4514, 3.9661, 4.3663 is called "color". The color property can be set on classes, ids or directly on the HTML element.

This example shows how text in the color `rgb(234, 212, 218)` looks like.

```
.text, #text, p{  
    color:rgb(234, 212, 218)  
}
```

If you want to add a text shadow in that color use the text-shadow property, you can generate a text shadow directly with our [CSS Text Shadow Generator](#).

Here you see how black text with a 4 pixel rgb(234, 212, 218) colored shadow looks like.

```
.shadow{ text-shadow: 4px 4px 2px rgb(234, 212, 218) }
```

Border

The CSS property to change the border of an element to HunterLab 83.4514, 3.9661, 4.3663 is called "border".

The border property can be set on classes, ids or directly on the HTML element.

This example shows the color as border, it can be applied via the CSS property "border" or "border-color".

```
.border, #border, table{ border:4px solid rgb(234, 212, 218) }
```


If only the border color should be changed use the property `border-color`.

```
.border{ border-color:rgb(234, 212, 218) }
```

If you want to add a box shadow in that color use:

Here you see how a box with a 4 pixel `rgb(234, 212, 218)` colored shadow looks like.

```
.boxshadow{ -moz-box-shadow:4px 4px 4px  
4px rgb(234, 212, 218); -webkit-box-  
shadow:4px 4px 4px 4px rgb(234, 212, 218);  
box-shadow:4px 4px 4px 4px rgb(234, 212,  
218) }
```

Background

The CSS property to change the background color of an element to HunterLab 83.4514, 3.9661, 4.3663 is called "background". The background property can be set on classes, ids or directly on the HTML element.

```
.background, #background, body{  
background: rgb(234, 212, 218) }
```

If only the background color should be changed can be used:

```
.background{ background-color: rgb(234,  
212, 218) }
```

This example shows the color as background, it is applied via the CSS property "background".

To optimize and compress your CSS code, you can use our [online CSS compressor and optimizer](#) based on csstidy. If you want to create a linear or radial gradient as background or border, check our [CSS Gradient Generator](#).

Hey! You found this booklet interesting? Support Converting Colors with the new Membership Option!

The pro membership hides all ads, plus gives you double the colors in the color bucket, and more awesome pro features!

[Learn more, Memberships starting at \\$2.50/m!](#)

**Follow me
on Twitter!**

@ConvertingColor