

Converting Colors

HunterLab(83.7253, 2.0647,
14.6445)

Have a look what the booklet for
HunterLab(83.7253, 2.0647,
14.6445) contains.

HunterLab(83.7253, 2.0647, 14.6445)	3
<i>Conversions</i>	4
<i>Details</i>	6
<i>Harmonies</i>	12
<i>Previews</i>	24
<i>Color Blindness Simulation</i>	28
<i>CSS Examples</i>	31

Color

**HunterLab(83.7253, 2.0647,
14.6445)**

Conversions

Conversions Part 1

Format	Color
Hex	F0D5C4
RGB	240, 213, 196
RGB Percent	94%, 84%, 77%
CMY	0.0588, 0.1647, 0.2314
CMYK	0.00, 0.11, 0.18, 0.06
HSL	23°, 59%, 85%
HSV	23°, 18%, 94%
XYZ	69.6932, 70.0993, 62.0819
YIQ	219.1350, 21.5490, 0.4370

Conversions

Conversions Part 2

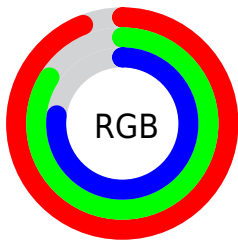
Format	Color
R _Y B	240, 224, 196
Decimal	15783364
CIE Lab	87.05, 6.71, 11.82
CIE LCh	87, 13.593, 60.428
Yxy	70.1024, 0.3452, 0.3472
Android (android.graphics.Color)	4293973444 (0xFFFF0D5C4)
YUV	219.1350, -11.4056, 18.2986
Hunter-Lab	83.7253, 2.0647, 14.6445

Details

The HunterLab color $83.7253, 2.0647, 14.6445$ is a light color, and the websafe version is hex $FFCCCC$. A complement of this color would be $84.1432, -9.6144, -6.4086$, and the grayscale version is $84.2664, -4.4962, 4.5784$.

A 20% lighter version of the original color is $99.9359, -5.6870, 6.3478$, and $60.4955, 2.9419, 12.2473$ is the 20% darker color. If you saturate the color by 10%, you get $78.7533, 6.4272, 19.2555$, and if you desaturate by 10%, it is $88.8997, -1.9248, 9.5870$.

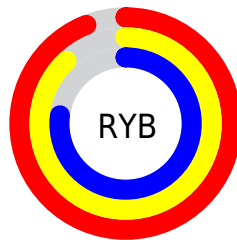
Distribution



Red (94%)

Green (84%)

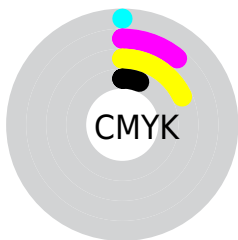
Blue (77%)



Red (94%)

Yellow (88%)

Blue (77%)

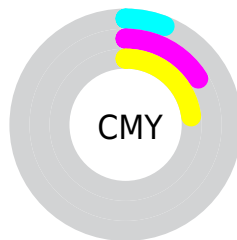


Cyan (0%)

Magenta (11%)

Yellow (18%)

Black (6%)



Cyan (6%)

Magenta (16%)

Yellow (23%)

Brightness & Saturation Gradients

These gradients show how the HunterLab color 83.7253, 2.0647, 14.6445 changes by changing the brightness by 10 percent. The first figure shows a shift by +10% for each color and the second figure -10%.

Similar to the brightness gradients but the following saturation gradients show a change of the HunterLab color 83.7253, 2.0647, 14.6445 by changing the saturation by 10% instead.

83.7253, 2.0647,
14.6445

83.7253, 2.0647,
14.6445

214.6880, -2.5859,
25.9366

71.8401, 2.3819,
13.4268

109.2496, 1.2875,
17.0930

60.5758, 2.6516,
12.2063

122.8347, 0.8387,
18.3260

49.9709, 2.8663,
10.9788

136.9404, 0.3520,
19.5676

40.0692, 3.0197,
9.7365

151.5481, -0.1703,
20.8189

30.9247, 3.1031,
8.4676

166.6412, -0.7268,
22.0809

22.6062, 3.1048,
7.1527

182.2046, -1.3158,

15.2059, 3.0071,

23.3541

5.7581

198.2244, -1.9359,
24.6392

■ 8.8326, 2.8702,
6.0292

0.0000, NaN, NaN

■ 83.7253, 2.0647,
14.6445

■ 83.7253, 2.0647,
14.6445

■ 78.7533, 6.4272,
19.2555

■ 88.8997, -1.9248,
9.5870

■ 74.0003, 11.1986,
23.3466

■ 94.2512, -5.5649,
4.1386

■ 69.4938, 16.3958,
26.8395

■ 98.6232, -10.1587,
3.7173

■ 65.2625, 22.0235,
29.6464

■ 61.3377, 28.0607,
31.6778

■ 57.7528, 34.4486,
32.8546

■ 54.5403, 41.0752,
33.1322

■ 51.7262, 47.7492,
32.5777

■ 51.2940, 48.8349,
32.4620

Harmonies

Analogous

The Analogous color harmony consists of three colors that are next to each other on the color wheel.



83.7272, 7.0730, 10.6005



83.7253, 2.0647, 14.6445



83.7272, -4.5694, 16.0386

Triad

The Triadic color harmony groups three colors that are evenly spaced from another and form a triangle on the color wheel.



83.7272, 2.0621, 14.6458



83.7272, -17.1185, 4.4647



83.7272, 2.2362, -6.8614

Complementary

The Complementary color scheme is a pair of colors which are on the opposite of each other on the color wheel.



83.7253, 2.0647, 14.6445



84.1432, -9.6144, -6.4086

Split Complementary

Split-complementary colors differ from the complementary color scheme. The scheme consists of three colors, the original color and two neighbors of the complement color.



83.7272, -4.3744, -8.8220



83.7253, 2.0647, 14.6445



83.7272, -15.4234, -1.9725

Square

The Square scheme is like the rectangle color scheme, but the four colors are evenly spaced on the color wheel.



83.7272, 2.0621, 14.6458



83.7272, -15.5158, 10.4520



83.7272, -10.8116, -6.9668



83.7272, 7.1757, -1.7993

Rectangle

The Rectangle color scheme consists of four colors that form a rectangle on the color wheel.



83.7253, 2.0647, 14.6445



83.7272, -8.9756, 15.3700



83.7272, -10.8116, -6.9668



83.7272, 0.1289, -7.9222

Sweetspot

The Sweet Spot groups the original color and five complimentary colors.



83.7272, 2.0621, 14.6458



97.1164, -3.3947, 8.3779



79.5870, 15.5072, -2.7661



44.7447, -1.4410, 4.0638

0.0000, NaN, NaN



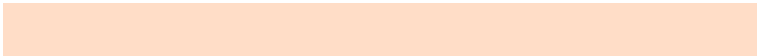
46.2646, -2.4686, 2.5136

Same Dimension

The Same Dimension uses a secret algorithm to generate beautiful new colors.



83.7272, 2.0621, 14.6458



87.6759, 3.9083, 17.5959



90.4719, -9.2277, 21.3613



40.9396, -0.6896, 4.7226



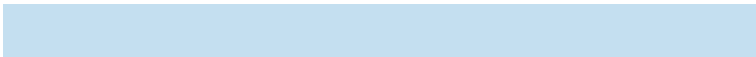
38.2646, 35.2998, 24.1965



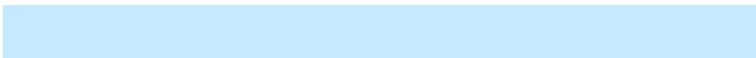
11.8547, 8.1242, 7.4470

Inverse Universe

The Inverse Universe completely reimagines the original color for something new.



84.1432, -9.6144, -6.4086



88.2084, -11.0803, -9.4318



77.3715, 1.6658, -15.4678



41.0407, -3.5164, -0.3742



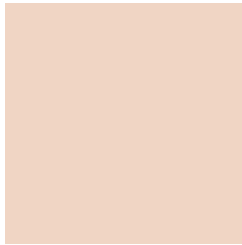
38.9551, -1.8424, -44.7132



12.0610, -1.8619, -11.0559

Previews

White Background



This preview shows how the HunterLab color 83.7253, 2.0647, 14.6445 looks on a white background.

Color Contrast Check

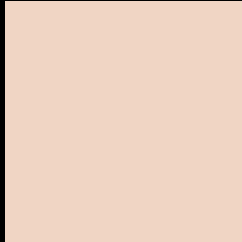
Large Text (above 18pt) WCAG AA × Fail

Any Text WCAG AA × Fail

Large Text (above 18pt) WCAG AAA × Fail

Any Text WCAG AAA × Fail

Black Background



This preview shows how the HunterLab color 83.7253, 2.0647, 14.6445 looks on a black background.

Color Contrast Check

Large Text (above 18pt) WCAG AA ✓ Pass

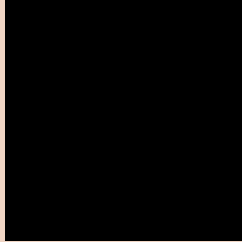
Any Text WCAG AA ✓ Pass

Large Text (above 18pt) WCAG AAA ✓ Pass

Any Text WCAG AAA ✓ Pass

If you want to check with other color combinations, try the [Color Contrast Checker](#).

HunterLab 83.7253, 2.0647, 14.6445 Background



This preview shows how black text looks on a background with the HunterLab color 83.7253, 2.0647, 14.6445.

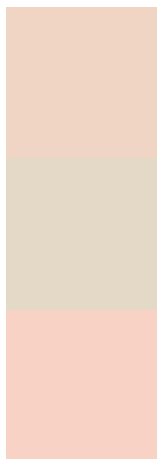


This preview shows how white text looks on a background with the HunterLab color 83.7253, 2.0647,

Color Blindness Simulation

Color vision deficiency is a very complex topic, and I could not describe the different causes any better than Wikipedia does, so if you want to learn more, you should check out their [article about color blindness](#).

Dichromacy



Original Color

83.7253, 2.0647, 14.6445

Protanopia

83.6862, -4.2151, 13.6420

Deuteranopia

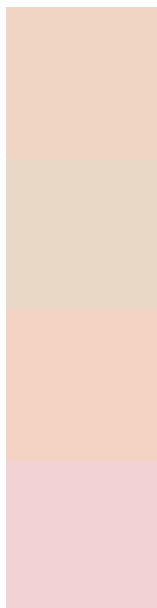
83.6054, 6.3078, 14.1672



Tritanopia

83.8274, 10.2357, 1.4502

Trichromacy



Original Color

83.7253, 2.0647, 14.6445

Protanomaly

83.8444, -2.1454, 14.2733

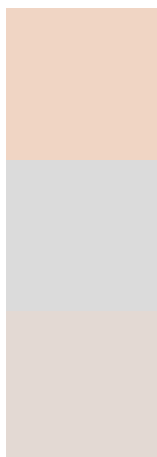
Deuteranomaly

83.5780, 4.6930, 14.1098

Tritanomaly

83.6677, 7.5012, 6.6047

Monochromacy



Original Color

83.7253, 2.0647, 14.6445

Achromatopsia

84.1651, -4.4908, 4.5728

Achromatomaly

84.0594, -2.1766, 8.2905

CSS Examples

Text

The CSS property to change the color of the text to HunterLab 83.7253, 2.0647, 14.6445 is called "color". The color property can be set on classes, ids or directly on the HTML element.

This example shows how text in the color `rgb(240, 213, 196)` looks like.

```
.text, #text, p{  
    color:rgb(240, 213, 196)  
}
```

If you want to add a text shadow in that color use the text-shadow property, you can generate a text shadow directly with our [CSS Text Shadow Generator](#).

Here you see how black text with a 4 pixel rgb(240, 213, 196) colored shadow looks like.

```
.shadow{ text-shadow: 4px 4px 2px rgb(240, 213, 196) }
```

Border

The CSS property to change the border of an element to HunterLab 83.7253, 2.0647, 14.6445 is called "border". The border property can be set on classes, ids or directly on the HTML element.

This example shows the color as border, it can be applied via the CSS property "border" or "border-color".

```
.border, #border, table{ border:4px solid rgb(240, 213, 196) }
```


If only the border color should be changed use the property `border-color`.

```
.border{ border-color:rgb(240, 213, 196) }
```

If you want to add a box shadow in that color use:

Here you see how a box with a 4 pixel `rgb(240, 213, 196)` colored shadow looks like.

```
.boxshadow{ -moz-box-shadow:4px 4px 4px  
4px rgb(240, 213, 196); -webkit-box-  
shadow:4px 4px 4px 4px rgb(240, 213, 196);  
box-shadow:4px 4px 4px 4px rgb(240, 213,  
196) }
```

Background

The CSS property to change the background color of an element to HunterLab 83.7253, 2.0647, 14.6445 is called "background". The background property can be set on classes, ids or directly on the HTML element.

```
.background, #background, body{  
background: rgb(240, 213, 196) }
```

If only the background color should be changed can be used:

```
.background{ background-color: rgb(240,  
213, 196) }
```

This example shows the color as background, it is applied via the CSS property "background".

To optimize and compress your CSS code, you can use our [online CSS compressor and optimizer](#) based on csstidy. If you want to create a linear or radial gradient as background or border, check our [CSS Gradient Generator](#).

Hey! You found this booklet interesting? Support Converting Colors with the new Membership Option!

The pro membership hides all ads, plus gives you double the colors in the color bucket, and more awesome pro features!

[Learn more, Memberships starting at \\$2.50/m!](#)

**Follow me
on Twitter!**

@ConvertingColor