

Converting Colors

HunterLab(83.7998, 4.3802,
8.9937)

Have a look what the booklet for
HunterLab(83.7998, 4.3802, 8.9937)
contains.

HunterLab(83.7948, 4.5765, 9.0328)	3
<i>Conversions</i>	4
<i>Details</i>	6
<i>Harmonies</i>	12
<i>Previews</i>	24
<i>Color Blindness Simulation</i>	28
<i>CSS Examples</i>	31

Color

**HunterLab(83.7948, 4.5765,
9.0328)**

Conversions

Conversions Part 1

Format	Color
Hex	F0D4D1
RGB	240, 212, 209
RGB Percent	94%, 83%, 82%
CMY	0.0588, 0.1686, 0.1804
CMYK	0.00, 0.12, 0.13, 0.06
HSL	6°, 51%, 88%
HSV	6°, 13%, 94%
XYZ	70.9873, 70.2157, 70.1332
YIQ	220.0300, 17.6510, 5.0030

Conversions

Conversions Part 2

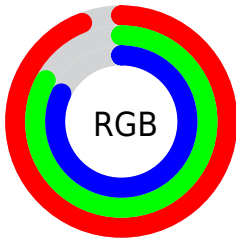
Format	Color
R _Y B	240, 212, 209
Decimal	15783121
CIE Lab	87.10, 9.24, 5.04
CIE LCh	87, 10.522, 28.625
Yxy	70.2188, 0.3359, 0.3323
Android (android.graphics.Color)	4293973201 (0xFFFF0D4D1)
YUV	220.0300, -5.4378, 17.5137
Hunter-Lab	83.7948, 4.5765, 9.0328

Details

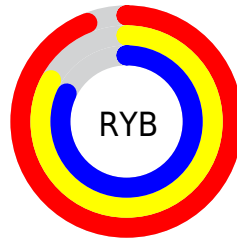
The HunterLab color $83.7948, 4.5765, 9.0328$ is a light color, and the websafe version is hex `FFCCCC`. A complement of this color would be $89.6735, -12.9986, 0.5222$, and the grayscale version is $84.6307, -4.5157, 4.5981$.

A 20% lighter version of the original color is $100.0000, -5.3358, 5.4332$, and $60.5565, 5.2725, 7.0451$ is the 20% darker color. If you saturate the color by 10%, you get $76.8108, 12.3999, 12.1177$, and if you desaturate by 10%, it is $91.1440, -2.8748, 5.9631$.

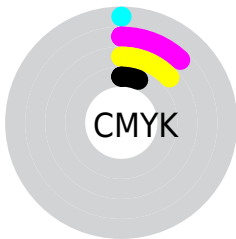
Distribution



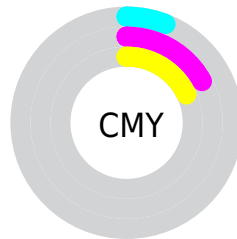
- Red (94%)
- Green (83%)
- Blue (82%)



- Red (94%)
- Yellow (83%)
- Blue (82%)



- Cyan (0%)
- Magenta (12%)
- Yellow (13%)
- Black (6%)



- Cyan (6%)
- Magenta (17%)
- Yellow (18%)

Brightness & Saturation Gradients

These gradients show how the HunterLab color 83.7948, 4.5765, 9.0328 changes by changing the brightness by 10 percent. The first figure shows a shift by +10% for each color and the second figure -10%.

Similar to the brightness gradients but the following saturation gradients show a change of the HunterLab color 83.7948, 4.5765, 9.0328 by changing the saturation by 10% instead.

83.7948, 4.5765,
9.0328

83.7948, 4.5765,
9.0328

214.7831, 0.7943,
17.8946

71.9061, 4.7781,
8.1514

109.3255, 4.0162,
10.8611

60.6382, 4.9264,
7.2888

122.9136, 3.6696,
11.8055

50.0294, 5.0128,
6.4455

137.0222, 3.2817,
12.7703

40.1235, 5.0298,
5.6202

151.6328, 2.8548,
13.7555

30.9745, 4.9673,
4.8104

166.7286, 2.3909,
14.7607

22.6512, 4.8112,
4.0113

182.2947, 1.8918,

15.2453, 4.5406,

15.7858

3.2140

198.3170, 1.3592,
16.8305

■ 8.8683, 4.2042,
2.8390

0.0000, NaN, NaN

■ 83.7948, 4.5765,
9.0328

■ 83.7948, 4.5765,
9.0328

■ 76.8108, 12.3999,
12.1177

■ 91.1440, -2.8748,
5.9631

■ 70.2476, 20.6158,
15.1880

■ 98.6232, -10.1587,
3.7174

■ 64.1824, 29.1907,
18.1966

■ 58.7054, 38.0119,
21.0608

■ 53.9203, 46.8376,
23.6527

■ 49.9357, 55.2532,
25.7994

■ 46.8480, 62.6764,
27.3097

■ 44.7120, 68.4662,
28.0467

■ 43.7591, 71.2790,
28.2120

Harmonies

Analogous

The Analogous color harmony consists of three colors that are next to each other on the color wheel.



83.7967, 5.8607, 4.3304



83.7948, 4.5765, 9.0328



83.7967, 0.8471, 12.3555

Triad

The Triadic color harmony groups three colors that are evenly spaced from another and form a triangle on the color wheel.



83.7967, 4.5740, 9.0342



83.7967, -12.9244, 9.4102



83.7967, -4.7179, -5.6219

Complementary

The Complementary color scheme is a pair of colors which are on the opposite of each other on the color wheel.



83.7948, 4.5765, 9.0328



89.6735, -12.9986, 0.5222

Split Complementary

Split-complementary colors differ from the complementary color scheme. The scheme consists of three colors, the original color and two neighbors of the complement color.



83.7967, -9.6688, -4.0619



83.7948, 4.5765, 9.0328



83.7967, -14.3341, 4.7915

Square

The Square scheme is like the rectangle color scheme, but the four colors are evenly spaced on the color wheel.



83.7967, 4.5740, 9.0342



83.7967, -9.2589, 12.5630



83.7967, -13.1569, -0.1726



83.7967, 0.4173, -4.3167

Rectangle

The Rectangle color scheme consists of four colors that form a rectangle on the color wheel.



83.7948, 4.5765, 9.0328



83.7967, -2.4746, 13.4430



83.7967, -13.1569, -0.1726



83.7967, -6.4581, -5.4135

Sweetspot

The Sweet Spot groups the original color and five complimentary colors.



83.7967, 4.5740, 9.0342



96.7591, -2.2233, 6.7477



83.8248, 11.0630, -5.0505



44.4860, -0.7547, 3.2364

0.0000, NaN, NaN



46.2646, -2.4686, 2.5136

Same Dimension

The Same Dimension uses a secret algorithm to generate beautiful new colors.



83.7967, 4.5740, 9.0342



88.1381, 6.6530, 10.3819



88.3818, -3.3228, 13.9355



40.0064, 0.9133, 3.6977



32.5068, 52.3015, 20.9462



9.8064, 13.7007, 6.2825

Inverse Universe

The Inverse Universe completely reimagines the original color for something new.



89.6735, -12.9986, 0.5222



95.4521, -15.2311, -0.2150



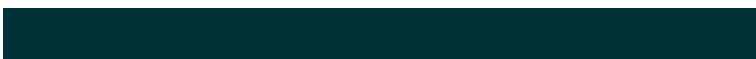
84.8798, -5.2794, -5.3748



42.0140, -5.0848, 0.7911



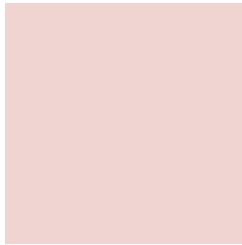
55.3590, -25.2611, -14.6626



16.2013, -7.5795, -3.8883

Previews

White Background



This preview shows how the HunterLab color 83.7948, 4.5765, 9.0328 looks on a white background.

Color Contrast Check

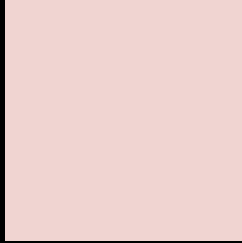
Large Text (above 18pt) WCAG AA × Fail

Any Text WCAG AA × Fail

Large Text (above 18pt) WCAG AAA × Fail

Any Text WCAG AAA × Fail

Black Background



This preview shows how the HunterLab color 83.7948, 4.5765, 9.0328 looks on a black background.

Color Contrast Check

Large Text (above 18pt) WCAG AA ✓ Pass

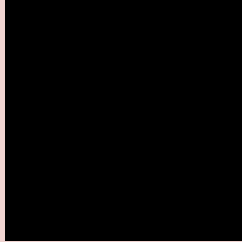
Any Text WCAG AA ✓ Pass

Large Text (above 18pt) WCAG AAA ✓ Pass

Any Text WCAG AAA ✓ Pass

If you want to check with other color combinations, try the [Color Contrast Checker](#).

HunterLab 83.7948, 4.5765, 9.0328 Background



This preview shows how black text looks on a background with the HunterLab color 83.7948, 4.5765, 9.0328.

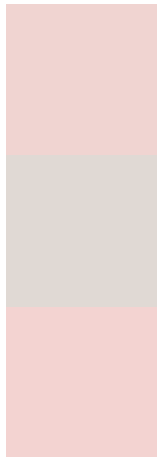


This preview shows how white text looks on a background with the HunterLab color 83.7948, 4.5765,

Color Blindness Simulation

Color vision deficiency is a very complex topic, and I could not describe the different causes any better than Wikipedia does, so if you want to learn more, you should check out their [article about color blindness](#).

Dichromacy



Original Color

83.7948, 4.5765, 9.0328

Protanopia

83.8012, -3.0087, 7.5165

Deuteranopia

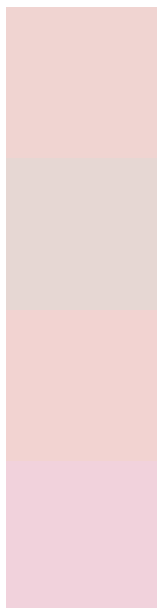
83.8133, 6.1672, 9.0815



Tritanopia

83.6476, 9.7066, 0.7134

Trichromacy



Original Color

83.7948, 4.5765, 9.0328

Protanomaly

83.7419, -0.1291, 7.9659

Deuteranomaly

83.7074, 5.8120, 8.9560

Tritanomaly

83.6429, 7.7915, 3.6806

Monochromacy



Original Color

83.7948, 4.5765, 9.0328

Achromatopsia

84.5987, -4.5140, 4.5964

Achromatomaly

84.2107, -1.3522, 6.1263

CSS Examples

Text

The CSS property to change the color of the text to HunterLab 83.7948, 4.5765, 9.0328 is called "color". The color property can be set on classes, ids or directly on the HTML element.

This example shows how text in the color `rgb(240, 212, 209)` looks like.

```
.text, #text, p{  
    color:rgb(240, 212, 209)  
}
```

If you want to add a text shadow in that color use the text-shadow property, you can generate a text shadow directly with our [CSS Text Shadow Generator](#).

Here you see how black text with a 4 pixel rgb(240, 212, 209) colored shadow looks like.

```
.shadow{ text-shadow: 4px 4px 2px rgb(240, 212, 209) }
```

Border

The CSS property to change the border of an element to HunterLab 83.7948, 4.5765, 9.0328 is called "border". The border property can be set on classes, ids or directly on the HTML element.

This example shows the color as border, it can be applied via the CSS property "border" or "border-color".

```
.border, #border, table{ border:4px solid rgb(240, 212, 209) }
```


If only the border color should be changed use the property `border-color`.

```
.border{ border-color:rgb(240, 212, 209) }
```

If you want to add a box shadow in that color use:

Here you see how a box with a 4 pixel `rgb(240, 212, 209)` colored shadow looks like.

```
.boxshadow{ -moz-box-shadow:4px 4px 4px  
4px rgb(240, 212, 209); -webkit-box-  
shadow:4px 4px 4px 4px rgb(240, 212, 209);  
box-shadow:4px 4px 4px 4px rgb(240, 212,  
209) }
```

Background

The CSS property to change the background color of an element to HunterLab 83.7948, 4.5765, 9.0328 is called "background". The background property can be set on classes, ids or directly on the HTML element.

```
.background, #background, body{  
background: rgb(240, 212, 209) }
```

If only the background color should be changed can be used:

```
.background{ background-color: rgb(240,  
212, 209) }
```

This example shows the color as background, it is applied via the CSS property "background".

To optimize and compress your CSS code, you can use our [online CSS compressor and optimizer](#) based on csstidy. If you want to create a linear or radial gradient as background or border, check our [CSS Gradient Generator](#).

Hey! You found this booklet interesting? Support Converting Colors with the new Membership Option!

The pro membership hides all ads, plus gives you double the colors in the color bucket, and more awesome pro features!

[Learn more, Memberships starting at \\$2.50/m!](#)

**Follow me
on Twitter!**

@ConvertingColor