

Converting Colors

HunterLab(83.9861, 3.7152,
2.8772)

Have a look what the booklet for
HunterLab(83.9861, 3.7152, 2.8772)
contains.

HunterLab(84.0778, 3.2505, 3.1321)	3
<i>Conversions</i>	4
<i>Details</i>	6
<i>Harmonies</i>	12
<i>Previews</i>	24
<i>Color Blindness Simulation</i>	28
<i>CSS Examples</i>	31

Color

**HunterLab(84.0778, 3.2505,
3.1321)**

Conversions

Conversions Part 1

Format	Color
Hex	E9D6DE
RGB	233, 214, 222
RGB Percent	91%, 84%, 87%
CMY	0.0863, 0.1608, 0.1294
CMYK	0.00, 0.08, 0.05, 0.09
HSL	335°, 30%, 88%
HSV	335°, 8%, 91%
XYZ	70.8357, 70.6908, 79.0186
YIQ	220.5930, 8.7560, 6.5160

Conversions

Conversions Part 2

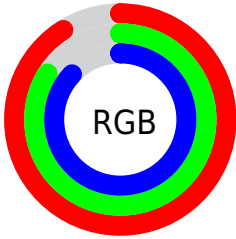
Format	Color
R _Y B	233, 214, 222
Decimal	15324894
CIE Lab	87.34, 7.91, -1.57
CIE LCh	87, 8.067, 348.812
Yxy	70.6938, 0.3212, 0.3205
Android (android.graphics.Color)	4293514974 (0xFFE9D6DE)
YUV	220.5930, 0.6937, 10.8809
Hunter-Lab	84.0778, 3.2505, 3.1321

Details

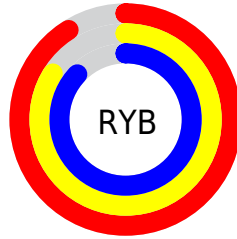
The HunterLab color $84.0778, 3.2505, 3.1321$ is a light color, and the websafe version is hex `CCCCCC`. A complement of this color would be $88.3245, -12.1634, 6.3919$, and the grayscale version is $84.8520, -4.5275, 4.6102$.

A 20% lighter version of the original color is $100.0000, -5.3358, 5.4332$, and $60.7729, 3.8049, 1.8474$ is the 20% darker color. If you saturate the color by 10%, you get $76.8351, 13.3363, 1.2769$, and if you desaturate by 10%, it is $91.7040, -6.6236, 5.3334$.

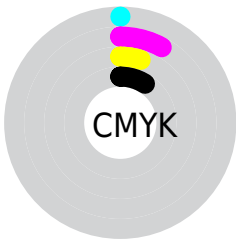
Distribution



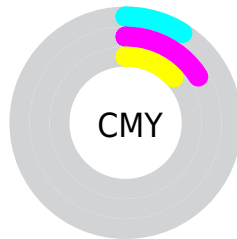
- Red (91%)
- Green (84%)
- Blue (87%)



- Red (91%)
- Yellow (84%)
- Blue (87%)



- Cyan (0%)
- Magenta (8%)
- Yellow (5%)
- Black (9%)



- Cyan (9%)
- Magenta (16%)
- Yellow (13%)

Brightness & Saturation Gradients

These gradients show how the HunterLab color 84.0778, 3.2505, 3.1321 changes by changing the brightness by 10 percent. The first figure shows a shift by +10% for each color and the second figure -10%.

Similar to the brightness gradients but the following saturation gradients show a change of the HunterLab color 84.0778, 3.2505, 3.1321 by changing the saturation by 10% instead.

84.0778, 3.2505,
3.1321

84.0778, 3.2505,
3.1321

215.1703, -0.9936,
9.7464

72.1751, 3.5141,
2.5558

109.6347, 2.5750,
4.3933

60.8923, 3.7271,
2.0158

123.2351, 2.1740,
5.0719

50.2677, 3.8820,
1.5161

137.3555, 1.7335,
5.7811

40.3450, 3.9718,
1.0600

151.9775, 1.2558,
6.5196

31.1777, 3.9873,
0.6517

167.0845, 0.7426,
7.2863

22.8343, 3.9157,
0.2970

182.6612, 0.1958,

15.4058, 3.7378,

8.0802

0.0037

198.6940, -0.3834,
8.9005

■ 9.0119, 3.4662,
-0.2313

0.0000, NaN, NaN

■ 84.0778, 3.2505,
3.1321

■ 84.0778, 3.2505,
3.1321

■ 76.8351, 13.3363,
1.2769

■ 91.7040, -6.6236,
5.3334

■ 70.0364, 23.6031,
-0.1470

■ 97.8175, -13.4033,
5.7241

■ 63.7652, 33.9436,
-1.0250

■ 98.0122, -12.3214,
2.9484

■ 58.1203, 44.1398,
-1.2216

■ 53.2147, 53.8081,
-0.5931

■ 49.1664, 62.3694,
0.9772

■ 46.0761, 69.1039,
3.5195

■ 43.9910, 73.3578,
6.9095

■ 42.8352, 74.9698,
10.8177

Harmonies

Analogous

The Analogous color harmony consists of three colors that are next to each other on the color wheel.



84.0796, 1.4217, -0.4248



84.0778, 3.2505, 3.1321



84.0796, 2.9722, 6.9196

Triad

The Triadic color harmony groups three colors that are evenly spaced from another and form a triangle on the color wheel.



84.0796, 3.2483, 3.1335



84.0796, -6.9754, 11.2608



84.0796, -9.5341, -1.1629

Complementary

The Complementary color scheme is a pair of colors which are on the opposite of each other on the color wheel.



84.0778, 3.2505, 3.1321



88.3245, -12.1634, 6.3919

Split Complementary

Split-complementary colors differ from the complementary color scheme. The scheme consists of three colors, the original color and two neighbors of the complement color.



84.0796, -11.7022, 2.1643



84.0778, 3.2505, 3.1321



84.0796, -10.2443, 9.2886

Square

The Square scheme is like the rectangle color scheme, but the four colors are evenly spaced on the color wheel.



84.0796, 3.2483, 3.1335



84.0796, -2.9817, 11.4929



84.0796, -11.9597, 5.9947



84.0796, -5.9893, -2.9820

Rectangle

The Rectangle color scheme consists of four colors that form a rectangle on the color wheel.



84.0778, 3.2505, 3.1321



84.0796, 1.6341, 9.0678



84.0796, -11.9597, 5.9947



84.0796, -10.4452, -0.1767

Sweetspot

The Sweet Spot groups the original color and five complimentary colors.



84.0796, 3.2483, 3.1335



98.2855, -3.1484, 4.9285



83.6360, 2.4705, -3.0714



45.5105, -1.5068, 2.2916

0.0000, NaN, NaN



46.2646, -2.4686, 2.5136

Same Dimension

The Same Dimension uses a secret algorithm to generate beautiful new colors.



84.0796, 3.2483, 3.1335



91.5865, 5.7001, 3.0493



84.2132, 1.2392, 7.1206



38.9349, 2.1387, 1.3436



32.1785, 56.7373, 8.1522



9.1209, 16.2781, 0.7913

Inverse Universe

The Inverse Universe completely reimagines the original color for something new.



84.0796, 3.2483, 3.1335



91.5865, 5.7001, 3.0493



88.1728, -10.1152, 2.3157



38.9349, 2.1387, 1.3436



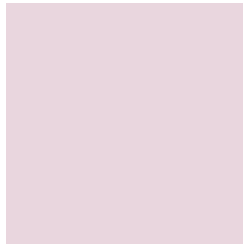
32.1785, 56.7373, 8.1522



9.1209, 16.2781, 0.7913

Previews

White Background



This preview shows how the HunterLab color 84.0778, 3.2505, 3.1321 looks on a white background.

Color Contrast Check

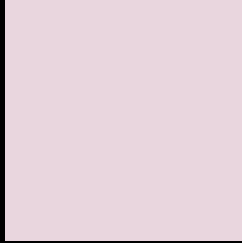
Large Text (above 18pt) WCAG AA × Fail

Any Text WCAG AA × Fail

Large Text (above 18pt) WCAG AAA × Fail

Any Text WCAG AAA × Fail

Black Background



This preview shows how the HunterLab color 84.0778, 3.2505, 3.1321 looks on a black background.

Color Contrast Check

Large Text (above 18pt) WCAG AA ✓ Pass

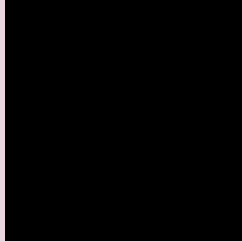
Any Text WCAG AA ✓ Pass

Large Text (above 18pt) WCAG AAA ✓ Pass

Any Text WCAG AAA ✓ Pass

If you want to check with other color combinations, try the [Color Contrast Checker](#).

HunterLab 84.0778, 3.2505, 3.1321 Background



This preview shows how black text looks on a background with the HunterLab color 84.0778, 3.2505, 3.1321.

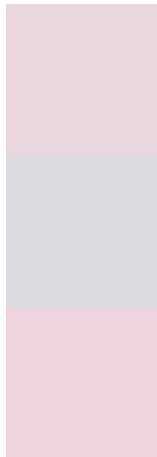


This preview shows how white text looks on a background with the HunterLab color 84.0778, 3.2505,

Color Blindness Simulation

Color vision deficiency is a very complex topic, and I could not describe the different causes any better than Wikipedia does, so if you want to learn more, you should check out their [article about color blindness](#).

Dichromacy



Original Color

84.0778, 3.2505, 3.1321

Protanopia

84.2002, -2.4632, 2.1829

Deuteranopia

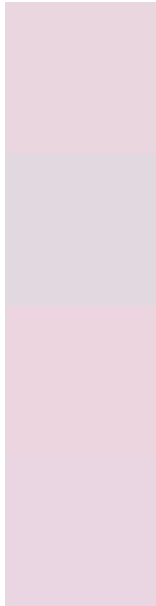
83.9869, 6.0216, 3.0720



Tritanopia

84.1392, 5.5220, -0.8104

Trichromacy



Original Color

84.0778, 3.2505, 3.1321

Protanomaly

84.2383, -0.8182, 2.7567

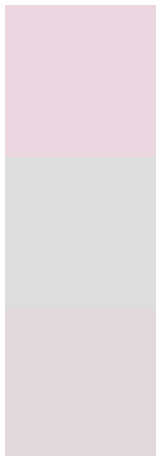
Deuteranomaly

84.0805, 4.8022, 3.1626

Tritanomaly

84.0399, 4.9891, 0.6016

Monochromacy



Original Color

84.0778, 3.2505, 3.1321

Achromatopsia

85.0326, -4.5371, 4.6200

Achromatomaly

84.4813, -1.6850, 4.0188

CSS Examples

Text

The CSS property to change the color of the text to HunterLab 84.0778, 3.2505, 3.1321 is called "color". The color property can be set on classes, ids or directly on the HTML element.

This example shows how text in the color `rgb(233, 214, 222)` looks like.

```
.text, #text, p{  
    color:rgb(233, 214, 222)  
}
```

If you want to add a text shadow in that color use the text-shadow property, you can generate a text shadow directly with our [CSS Text Shadow Generator](#).

Here you see how black text with a 4 pixel rgb(233, 214, 222) colored shadow looks like.

```
.shadow{ text-shadow: 4px 4px 2px rgb(233, 214, 222) }
```

Border

The CSS property to change the border of an element to HunterLab 84.0778, 3.2505, 3.1321 is called "border".

The border property can be set on classes, ids or directly on the HTML element.

This example shows the color as border, it can be applied via the CSS property "border" or "border-color".

```
.border, #border, table{ border:4px solid rgb(233, 214, 222) }
```


If only the border color should be changed use the property `border-color`.

```
.border{ border-color:rgb(233, 214, 222) }
```

If you want to add a box shadow in that color use:

Here you see how a box with a 4 pixel `rgb(233, 214, 222)` colored shadow looks like.

```
.boxshadow{ -moz-box-shadow:4px 4px 4px  
4px rgb(233, 214, 222); -webkit-box-  
shadow:4px 4px 4px 4px rgb(233, 214, 222);  
box-shadow:4px 4px 4px 4px rgb(233, 214,  
222) }
```

Background

The CSS property to change the background color of an element to HunterLab 84.0778, 3.2505, 3.1321 is called "background". The background property can be set on classes, ids or directly on the HTML element.

```
.background, #background, body{  
background: rgb(233, 214, 222) }
```

If only the background color should be changed can be used:

```
.background{ background-color: rgb(233,  
214, 222) }
```

This example shows the color as background, it is applied via the CSS property "background".

To optimize and compress your CSS code, you can use our [online CSS compressor and optimizer](#) based on csstidy. If you want to create a linear or radial gradient as background or border, check our [CSS Gradient Generator](#).

Hey! You found this booklet interesting? Support Converting Colors with the new Membership Option!

The pro membership hides all ads, plus gives you double the colors in the color bucket, and more awesome pro features!

[Learn more, Memberships starting at \\$2.50/m!](#)

**Follow me
on Twitter!**

@ConvertingColor