

Converting Colors

HunterLab(84.0703, 3.0951,
6.0262)

Have a look what the booklet for
HunterLab(84.0703, 3.0951, 6.0262)
contains.

HunterLab(84.0911, 2.9199, 6.0624)	3
<i>Conversions</i>	4
<i>Details</i>	6
<i>Harmonies</i>	12
<i>Previews</i>	24
<i>Color Blindness Simulation</i>	28
<i>CSS Examples</i>	31

Color

**HunterLab(84.0911, 2.9199,
6.0624)**

Conversions

Conversions Part 1

Format	Color
Hex	EBD6D8
RGB	235, 214, 216
RGB Percent	92%, 84%, 85%
CMY	0.0784, 0.1608, 0.1529
CMYK	0.00, 0.09, 0.08, 0.08
HSL	354°, 34%, 88%
HSV	354°, 9%, 92%
XYZ	70.7022, 70.7131, 74.8883
YIQ	220.5070, 11.8740, 5.0740

Conversions

Conversions Part 2

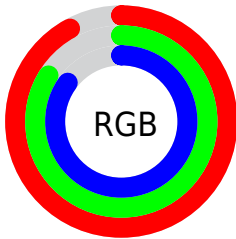
Format	Color
R _Y B	235, 214, 216
Decimal	15455960
CIE Lab	87.35, 7.58, 1.64
CIE LCh	87, 7.757, 12.215
Yxy	70.7162, 0.3269, 0.3269
Android (android.graphics.Color)	4293646040 (0xFFEBD6D8)
YUV	220.5070, -2.2220, 12.7104
Hunter-Lab	84.0911, 2.9199, 6.0624

Details

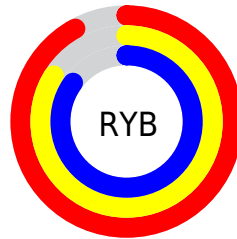
The HunterLab color $84.0911, 2.9199, 6.0624$ is a light color, and the websafe version is hex `CCCCCC`. A complement of this color would be $89.2176, -11.7772, 3.5356$, and the grayscale version is $84.8259, -4.5261, 4.6088$.

A 20% lighter version of the original color is $100.0000, -5.3358, 5.4332$, and $60.7891, 3.5030, 4.6326$ is the 20% darker color. If you saturate the color by 10%, you get $76.5746, 11.9300, 7.5395$, and if you desaturate by 10%, it is $92.0076, -5.7752, 4.8313$.

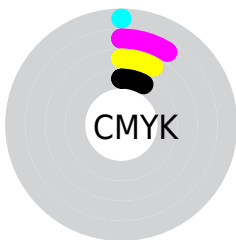
Distribution



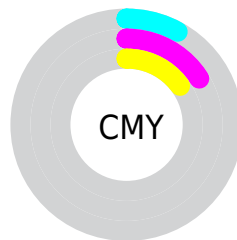
- Red (92%)
- Green (84%)
- Blue (85%)



- Red (92%)
- Yellow (84%)
- Blue (85%)



- Cyan (0%)
- Magenta (9%)
- Yellow (8%)
- Black (8%)



- Cyan (8%)
- Magenta (16%)
- Yellow (15%)

Brightness & Saturation Gradients

These gradients show how the HunterLab color 84.0911, 2.9199, 6.0624 changes by changing the brightness by 10 percent. The first figure shows a shift by +10% for each color and the second figure -10%.

Similar to the brightness gradients but the following saturation gradients show a change of the HunterLab color 84.0911, 2.9199, 6.0624 by changing the saturation by 10% instead.

84.0911, 2.9199,
6.0624

84.0911, 2.9199,
6.0624

215.1885, -1.4390,
13.7551

72.1877, 3.1987,
5.3406

109.6493, 2.2156,
7.5948

60.9043, 3.4277,
4.6471

123.2502, 1.8011,
8.4007

50.2789, 3.5996,
3.9843

137.3712, 1.3476,
9.2326

40.3554, 3.7074,
3.3536

151.9938, 0.8573,
10.0895

31.1873, 3.7423,
2.7563

167.1012, 0.3319,
10.9708

22.8429, 3.6916,
2.1938

182.6785, -0.2268,

15.4134, 3.5367,

11.8759

1.6670

198.7118, -0.8176,
12.8042

■ 9.0186, 3.2890,
1.2453

0.0000, NaN, NaN

■ 84.0911, 2.9199,
6.0624

■ 84.0911, 2.9199,
6.0624

■ 76.5746, 11.9300,
7.5395

■ 92.0076, -5.7752,
4.8313

■ 69.5249, 21.2584,
9.2946

■ 98.1847, -11.7094,
3.1660

■ 63.0341, 30.8384,
11.3579

■ 57.2132, 40.4939,
13.7346

■ 52.1912, 49.8719,
16.3813

■ 48.1034, 58.3953,
19.1753

■ 45.0648, 65.3083,
21.8970

■ 43.1249, 69.9038,
24.2617

■ 42.1725, 72.0529,
25.9860

Harmonies

Analogous

The Analogous color harmony consists of three colors that are next to each other on the color wheel.



84.0929, 2.7238, 2.3829



84.0911, 2.9199, 6.0624



84.0929, 1.1000, 9.2033

Triad

The Triadic color harmony groups three colors that are evenly spaced from another and form a triangle on the color wheel.



84.0929, 2.9176, 6.0638



84.0929, -9.4410, 9.6609



84.0929, -6.7559, -2.4575

Complementary

The Complementary color scheme is a pair of colors which are on the opposite of each other on the color wheel.



84.0911, 2.9199, 6.0624



89.2176, -11.7772, 3.5356

Split Complementary

Split-complementary colors differ from the complementary color scheme. The scheme consists of three colors, the original color and two neighbors of the complement color.



84.0929, -9.9406, -0.3272



84.0911, 2.9199, 6.0624



84.0929, -11.4714, 6.7143

Square

The Square scheme is like the rectangle color scheme, but the four colors are evenly spaced on the color wheel.



84.0929, 2.9176, 6.0638



84.0929, -6.0627, 11.2162



84.0929, -11.6526, 3.0634



84.0929, -2.9087, -2.6511

Rectangle

The Rectangle color scheme consists of four colors that form a rectangle on the color wheel.



84.0911, 2.9199, 6.0624



84.0929, -0.9889, 10.6115



84.0929, -11.6526, 3.0634



84.0929, -7.9376, -1.9398

Sweetspot

The Sweet Spot groups the original color and five complimentary colors.



84.0929, 2.9176, 6.0638



97.3539, -2.4869, 5.8225



84.4993, 5.5229, -2.9847



44.7160, -0.7959, 2.7436

0.0000, NaN, NaN



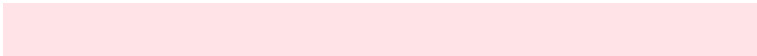
46.2646, -2.4686, 2.5136

Same Dimension

The Same Dimension uses a secret algorithm to generate beautiful new colors.



84.0929, 2.9176, 6.0638



90.4779, 5.2620, 6.9715



86.5881, -1.8071, 9.7592



38.8295, 1.5720, 2.8470



31.4180, 53.9353, 19.2867



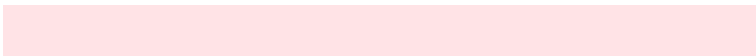
8.8489, 15.2801, 4.7407

Inverse Universe

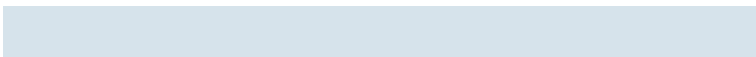
The Inverse Universe completely reimagines the original color for something new.



84.0929, 2.9176, 6.0638



90.4779, 5.2620, 6.9715



86.6120, -7.1228, -0.5589



38.8295, 1.5720, 2.8470



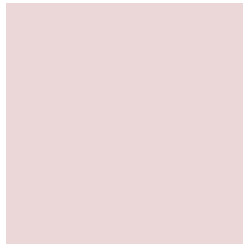
31.4180, 53.9353, 19.2867



8.8489, 15.2801, 4.7407

Previews

White Background



This preview shows how the HunterLab color 84.0911, 2.9199, 6.0624 looks on a white background.

Color Contrast Check

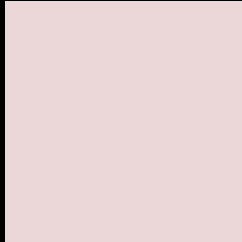
Large Text (above 18pt) WCAG AA × Fail

Any Text WCAG AA × Fail

Large Text (above 18pt) WCAG AAA × Fail

Any Text WCAG AAA × Fail

Black Background



This preview shows how the HunterLab color 84.0911, 2.9199, 6.0624 looks on a black background.

Color Contrast Check

Large Text (above 18pt) WCAG AA ✓ Pass

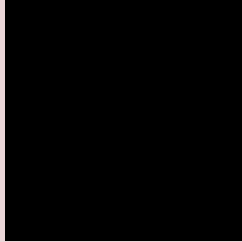
Any Text WCAG AA ✓ Pass

Large Text (above 18pt) WCAG AAA ✓ Pass

Any Text WCAG AAA ✓ Pass

If you want to check with other color combinations, try the [Color Contrast Checker](#).

HunterLab 84.0911, 2.9199, 6.0624 Background



This preview shows how black text looks on a background with the HunterLab color 84.0911, 2.9199, 6.0624.



This preview shows how white text looks on a background with the HunterLab color 84.0911, 2.9199,

Color Blindness Simulation

Color vision deficiency is a very complex topic, and I could not describe the different causes any better than Wikipedia does, so if you want to learn more, you should check out their [article about color blindness](#).

Dichromacy



Original Color

84.0911, 2.9199, 6.0624

Protanopia

84.1978, -2.8513, 5.1247

Deuteranopia

84.1104, 6.0596, 6.1397



Tritanopia

84.1122, 6.8970, -0.3024

Trichromacy



Original Color

84.0911, 2.9199, 6.0624

Protanomaly

84.2415, -1.1846, 5.6865

Deuteranomaly

84.2004, 4.8304, 6.2226

Tritanomaly

84.1446, 5.1463, 2.2491

Monochromacy



Original Color

84.0911, 2.9199, 6.0624

Achromatopsia

85.0326, -4.5371, 4.6200

Achromatomaly

84.5139, -1.6979, 5.0316

CSS Examples

Text

The CSS property to change the color of the text to HunterLab 84.0911, 2.9199, 6.0624 is called "color". The color property can be set on classes, ids or directly on the HTML element.

This example shows how text in the color `rgb(235, 214, 216)` looks like.

```
.text, #text, p{  
  color:rgb(235, 214, 216)  
}
```

If you want to add a text shadow in that color use the text-shadow property, you can generate a text shadow directly with our [CSS Text Shadow Generator](#).

Here you see how black text with a 4 pixel rgb(235, 214, 216) colored shadow looks like.

```
.shadow{ text-shadow: 4px 4px 2px rgb(235, 214, 216) }
```

Border

The CSS property to change the border of an element to HunterLab 84.0911, 2.9199, 6.0624 is called "border".

The border property can be set on classes, ids or directly on the HTML element.

This example shows the color as border, it can be applied via the CSS property "border" or "border-color".

```
.border, #border, table{ border:4px solid rgb(235, 214, 216) }
```


If only the border color should be changed use the property `border-color`.

```
.border{ border-color:rgb(235, 214, 216) }
```

If you want to add a box shadow in that color use:

Here you see how a box with a 4 pixel `rgb(235, 214, 216)` colored shadow looks like.

```
.boxshadow{ -moz-box-shadow:4px 4px 4px  
4px rgb(235, 214, 216); -webkit-box-  
shadow:4px 4px 4px 4px rgb(235, 214, 216);  
box-shadow:4px 4px 4px 4px rgb(235, 214,  
216) }
```

Background

The CSS property to change the background color of an element to HunterLab 84.0911, 2.9199, 6.0624 is called "background". The background property can be set on classes, ids or directly on the HTML element.

```
.background, #background, body{  
background: rgb(235, 214, 216) }
```

If only the background color should be changed can be used:

```
.background{ background-color: rgb(235,  
214, 216) }
```

This example shows the color as background, it is applied via the CSS property "background".

To optimize and compress your CSS code, you can use our [online CSS compressor and optimizer](#) based on csstidy. If you want to create a linear or radial gradient as background or border, check our [CSS Gradient Generator](#).

Hey! You found this booklet interesting? Support Converting Colors with the new Membership Option!

The pro membership hides all ads, plus gives you double the colors in the color bucket, and more awesome pro features!

[Learn more, Memberships starting at \\$2.50/m!](#)

**Follow me
on Twitter!**

@ConvertingColor