

Converting Colors

HunterLab(84.1132, 2.8675,
7.0351)

Have a look what the booklet for
HunterLab(84.1132, 2.8675, 7.0351)
contains.

HunterLab(84.1315, 2.9344, 7.0590)	3
<i>Conversions</i>	4
<i>Details</i>	6
<i>Harmonies</i>	12
<i>Previews</i>	24
<i>Color Blindness Simulation</i>	28
<i>CSS Examples</i>	31

Color

**HunterLab(84.1315, 2.9344,
7.0590)**

Conversions

Conversions Part 1

Format	Color
Hex	ECD6D6
RGB	236, 214, 214
RGB Percent	93%, 84%, 84%
CMY	0.0745, 0.1608, 0.1608
CMYK	0.00, 0.09, 0.09, 0.07
HSL	0°, 37%, 88%
HSV	0°, 9%, 93%
XYZ	70.7763, 70.7811, 73.5502
YIQ	220.5780, 13.1120, 4.6640

Conversions

Conversions Part 2

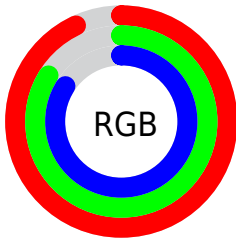
Format	Color
R _Y B	236, 214, 214
Decimal	15521494
CIE Lab	87.38, 7.60, 2.76
CIE LCh	87, 8.081, 19.940
Yxy	70.7842, 0.3290, 0.3291
Android (android.graphics.Color)	4293711574 (0xFFECD6D6)
YUV	220.5780, -3.2430, 13.5251
Hunter-Lab	84.1315, 2.9344, 7.0590

Details

The HunterLab color $84.1315, 2.9344, 7.0590$ is a light color, and the websafe version is hex $CCCCCC$. A complement of this color would be $89.6336, -11.7482, 2.5333$, and the grayscale version is $84.8607, -4.5280, 4.6106$.

A 20% lighter version of the original color is $100.0000, -5.3358, 5.4332$, and $60.8299, 3.5251, 5.5743$ is the 20% darker color. If you saturate the color by 10%, you get $76.5331, 11.6813, 9.4458$, and if you desaturate by 10%, it is $92.1412, -5.4437, 4.8293$.

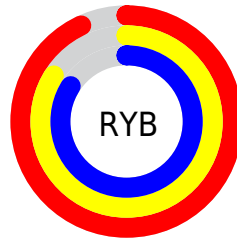
Distribution



Red (93%)

Green (84%)

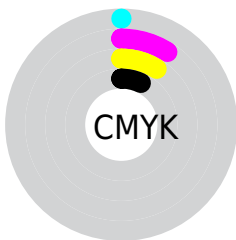
Blue (84%)



Red (93%)

Yellow (84%)

Blue (84%)

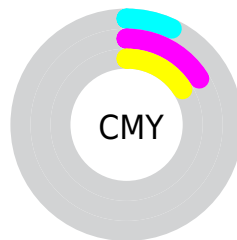


Cyan (0%)

Magenta (9%)

Yellow (9%)

Black (7%)



Cyan (7%)

Magenta (16%)

Yellow (16%)

Brightness & Saturation Gradients

These gradients show how the HunterLab color 84.1315, 2.9344, 7.0590 changes by changing the brightness by 10 percent. The first figure shows a shift by +10% for each color and the second figure -10%.

Similar to the brightness gradients but the following saturation gradients show a change of the HunterLab color 84.1315, 2.9344, 7.0590 by changing the saturation by 10% instead.

84.1315, 2.9344,
7.0590

84.1315, 2.9344,
7.0590

215.2438, -1.4203,
15.1338

72.2261, 3.2126,
6.2853

109.6934, 2.2311,
8.6879

60.9405, 3.4411,
5.5368

123.2961, 1.8171,
9.5390

50.3130, 3.6123,
4.8155

137.4188, 1.3641,
10.4143

40.3870, 3.7196,
4.1218

152.0430, 0.8742,
11.3132

31.2163, 3.7538,
3.4560

167.1520, 0.3493,
12.2350

22.8691, 3.7024,
2.8175

182.7308, -0.2090,

15.4363, 3.5468,

13.1794

2.2044

198.7656, -0.7993,
14.1458

■ 9.0389, 3.2943,
1.7559

0.0000, NaN, NaN

■ 84.1315, 2.9344,
7.0590

■ 84.1315, 2.9344,
7.0590

■ 76.5331, 11.6813,
9.4458

■ 92.1412, -5.4437,
4.8293

■ 69.4155, 20.8122,
11.9937

■ 98.2716, -11.4016,
3.2754

■ 62.8752, 30.2722,
14.6931

■ 57.0279, 39.8939,
17.4963

■ 52.0080, 49.3244,
20.2945

■ 47.9551, 57.9725,
22.8995

■ 44.9845, 65.0553,
25.0573

■ 43.1389, 69.8380,
26.5249

■ 42.2756, 72.1896,
27.2494

Harmonies

Analogous

The Analogous color harmony consists of three colors that are next to each other on the color wheel.



84.1334, 3.2904, 3.2789



84.1315, 2.9344, 7.0590



84.1334, 0.5631, 10.0400

Triad

The Triadic color harmony groups three colors that are evenly spaced from another and form a triangle on the color wheel.



84.1334, 2.9320, 7.0604



84.1334, -10.3555, 9.1968



84.1334, -5.8459, -3.0241

Complementary

The Complementary color scheme is a pair of colors which are on the opposite of each other on the color wheel.



84.1315, 2.9344, 7.0590



89.6336, -11.7482, 2.5333

Split Complementary

Split-complementary colors differ from the complementary color scheme. The scheme consists of three colors, the original color and two neighbors of the complement color.



84.1334, -9.4337, -1.2733



84.1315, 2.9344, 7.0590



84.1334, -12.0046, 5.8598

Square

The Square scheme is like the rectangle color scheme, but the four colors are evenly spaced on the color wheel.



84.1334, 2.9320, 7.0604



84.1334, -7.1259, 11.2326



84.1334, -11.6704, 2.0209



84.1334, -1.8286, -2.6654

Rectangle

The Rectangle color scheme consists of four colors that form a rectangle on the color wheel.



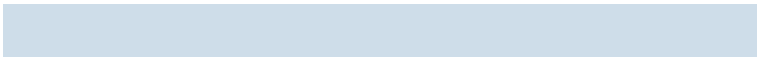
84.1315, 2.9344, 7.0590



84.1334, -1.8133, 11.2278



84.1334, -11.6704, 2.0209



84.1334, -7.1409, -2.6597

Sweetspot

The Sweet Spot groups the original color and five complimentary colors.



84.1334, 2.9320, 7.0604



97.3312, -2.6139, 6.1534



84.8429, 6.7495, -3.0589



44.7027, -0.8700, 2.9370

0.0000, NaN, NaN



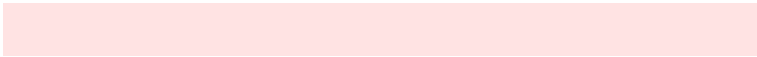
46.2646, -2.4686, 2.5136

Same Dimension

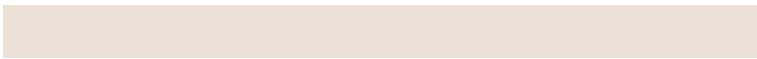
The Same Dimension uses a secret algorithm to generate beautiful new colors.



84.1334, 2.9320, 7.0604



90.3974, 4.8188, 8.1457



87.4868, -2.8212, 10.7445



38.8001, 1.4097, 3.2754



31.3537, 53.6882, 20.2599



8.7869, 15.0415, 5.6778

Inverse Universe

The Inverse Universe completely reimagines the original color for something new.



89.6336, -11.7482, 2.5333



97.4984, -14.1418, 2.2984



86.1416, -6.1143, -1.6478



41.3780, -5.4709, 1.1535



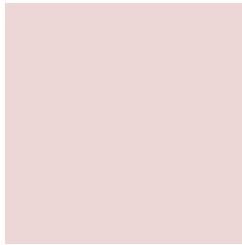
60.3263, -31.9747, -6.3785



16.9052, -8.9605, -1.7868

Previews

White Background



This preview shows how the HunterLab color 84.1315, 2.9344, 7.0590 looks on a white background.

Color Contrast Check

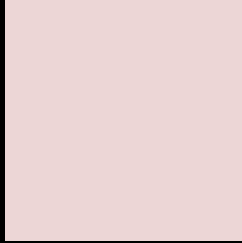
Large Text (above 18pt) WCAG AA × Fail

Any Text WCAG AA × Fail

Large Text (above 18pt) WCAG AAA × Fail

Any Text WCAG AAA × Fail

Black Background



This preview shows how the HunterLab color 84.1315, 2.9344, 7.0590 looks on a black background.

Color Contrast Check

Large Text (above 18pt) WCAG AA ✓ Pass

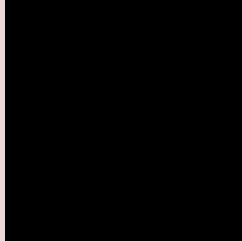
Any Text WCAG AA ✓ Pass

Large Text (above 18pt) WCAG AAA ✓ Pass

Any Text WCAG AAA ✓ Pass

If you want to check with other color combinations, try the [Color Contrast Checker](#).

HunterLab 84.1315, 2.9344, 7.0590 Background



This preview shows how black text looks on a background with the HunterLab color 84.1315, 2.9344, 7.0590.



This preview shows how white text looks on a background with the HunterLab color 84.1315, 2.9344,

Color Blindness Simulation

Color vision deficiency is a very complex topic, and I could not describe the different causes any better than Wikipedia does, so if you want to learn more, you should check out their [article about color blindness](#).

Dichromacy



Original Color

84.1315, 2.9344, 7.0590

Protanopia

84.1360, -3.1890, 6.0075

Deuteranopia

84.1542, 6.0842, 7.1403



Tritanopia

84.1817, 7.0630, 0.3005

Trichromacy



Original Color

84.1315, 2.9344, 7.0590

Protanomaly

84.2769, -1.1857, 6.6814

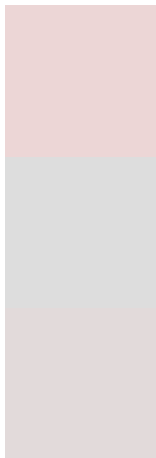
Deuteranomaly

84.2430, 4.8517, 7.2207

Tritanomaly

84.2145, 5.3169, 2.8354

Monochromacy



Original Color

84.1315, 2.9344, 7.0590

Achromatopsia

85.0326, -4.5371, 4.6200

Achromatomaly

84.4828, -1.8672, 5.4751

CSS Examples

Text

The CSS property to change the color of the text to HunterLab 84.1315, 2.9344, 7.0590 is called "color". The color property can be set on classes, ids or directly on the HTML element.

This example shows how text in the color `rgb(236, 214, 214)` looks like.

```
.text, #text, p{  
  color:rgb(236, 214, 214)  
}
```

If you want to add a text shadow in that color use the text-shadow property, you can generate a text shadow directly with our [CSS Text Shadow Generator](#).

Here you see how black text with a 4 pixel rgb(236, 214, 214) colored shadow looks like.

```
.shadow{ text-shadow: 4px 4px 2px rgb(236, 214, 214) }
```

Border

The CSS property to change the border of an element to HunterLab 84.1315, 2.9344, 7.0590 is called "border".

The border property can be set on classes, ids or directly on the HTML element.

This example shows the color as border, it can be applied via the CSS property "border" or "border-color".

```
.border, #border, table{ border:4px solid rgb(236, 214, 214) }
```


If only the border color should be changed use the property `border-color`.

```
.border{ border-color:rgb(236, 214, 214) }
```

If you want to add a box shadow in that color use:

Here you see how a box with a 4 pixel `rgb(236, 214, 214)` colored shadow looks like.

```
.boxshadow{ -moz-box-shadow:4px 4px 4px  
4px rgb(236, 214, 214); -webkit-box-  
shadow:4px 4px 4px 4px rgb(236, 214, 214);  
box-shadow:4px 4px 4px 4px rgb(236, 214,  
214) }
```

Background

The CSS property to change the background color of an element to HunterLab 84.1315, 2.9344, 7.0590 is called "background". The background property can be set on classes, ids or directly on the HTML element.

```
.background, #background, body{  
background: rgb(236, 214, 214) }
```

If only the background color should be changed can be used:

```
.background{ background-color: rgb(236,  
214, 214) }
```

This example shows the color as background, it is applied via the CSS property "background".

To optimize and compress your CSS code, you can use our [online CSS compressor and optimizer](#) based on csstidy. If you want to create a linear or radial gradient as background or border, check our [CSS Gradient Generator](#).

Hey! You found this booklet interesting? Support Converting Colors with the new Membership Option!

The pro membership hides all ads, plus gives you double the colors in the color bucket, and more awesome pro features!

[Learn more, Memberships starting at \\$2.50/m!](#)

**Follow me
on Twitter!**

@ConvertingColor