

Converting Colors

HunterLab(84.1281, 4.6485,
5.6564)

Have a look what the booklet for
HunterLab(84.1281, 4.6485, 5.6564)
contains.

HunterLab(84.1281, 4.6485, 5.6564)	3
<i>Conversions</i>	4
<i>Details</i>	6
<i>Harmonies</i>	12
<i>Previews</i>	24
<i>Color Blindness Simulation</i>	28
<i>CSS Examples</i>	31

Color

**HunterLab(84.1281, 4.6485,
5.6564)**

Conversions

Conversions Part 1

Format	Color
Hex	EED5D9
RGB	238, 213, 217
RGB Percent	93%, 84%, 85%
CMY	0.0667, 0.1647, 0.1490
CMYK	0.00, 0.11, 0.09, 0.07
HSL	350°, 42%, 88%
HSV	350°, 11%, 93%
XYZ	71.5785, 70.7754, 75.5341
YIQ	220.9310, 13.6160, 6.5440

Conversions

Conversions Part 2

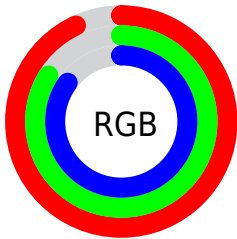
Format	Color
R _Y B	238, 213, 217
Decimal	15652313
CIE Lab	87.38, 9.31, 1.19
CIE LCh	87, 9.390, 7.266
Yxy	70.7785, 0.3285, 0.3248
Android (android.graphics.Color)	4293842393 (0xFFEED5D9)
YUV	220.9310, -1.9380, 14.9695
Hunter-Lab	84.1281, 4.6485, 5.6564

Details

The HunterLab color $84.1281, 4.6485, 5.6564$ is a light color, and the websafe version is hex $FFCCCC$. A complement of this color would be $90.1318, -13.4184, 4.0958$, and the grayscale version is $85.0082, -4.5358, 4.6187$.

A 20% lighter version of the original color is $100.0000, -5.3358, 5.4332$, and $60.8337, 5.1585, 4.2608$ is the 20% darker color. If you saturate the color by 10%, you get $76.6110, 14.0709, 6.5704$, and if you desaturate by 10%, it is $92.0584, -4.4829, 5.0475$.

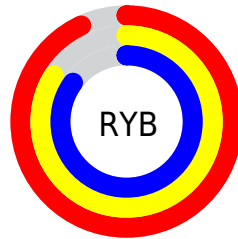
Distribution



Red (93%)

Green (84%)

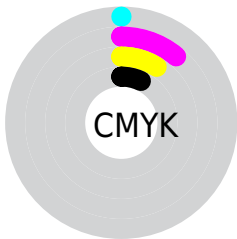
Blue (85%)



Red (93%)

Yellow (84%)

Blue (85%)

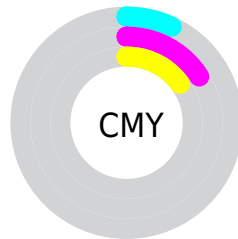


Cyan (0%)

Magenta (11%)

Yellow (9%)

Black (7%)



Cyan (7%)

Magenta (16%)

Yellow (15%)

Brightness & Saturation Gradients

These gradients show how the HunterLab color 84.1281, 4.6485, 5.6564 changes by changing the brightness by 10 percent. The first figure shows a shift by +10% for each color and the second figure -10%.

Similar to the brightness gradients but the following saturation gradients show a change of the HunterLab color 84.1281, 4.6485, 5.6564 by changing the saturation by 10% instead.

84.1281, 4.6485,
5.6564

84.1281, 4.6485,
5.6564

215.2391, 0.8837,
13.1955

72.2229, 4.8481,
4.9555

109.6897, 4.0924,
7.1501

60.9375, 4.9942,
4.2839

123.2923, 3.7478,
7.9379

50.3101, 5.0785,
3.6446

137.4148, 3.3618,
8.7522

40.3844, 5.0934,
3.0390

152.0388, 2.9368,
9.5923

31.2139, 5.0288,
2.4691

167.1477, 2.4748,
10.4573

22.8669, 4.8706,
1.9368

182.7264, 1.9776,

15.4344, 4.5982,

11.3466

1.4443

198.7611, 1.4468,
12.2596

■ 9.0372, 4.2178,
1.0366

0.0000, NaN, NaN

■ 84.1281, 4.6485,
5.6564

■ 84.1281, 4.6485,
5.6564

■ 76.6110, 14.0709,
6.5704

■ 92.0584, -4.4829,
5.0475

■ 69.5765, 23.7717,
7.8387

■ 98.4466, -10.7824,
3.4955

■ 63.1197, 33.6584,
9.5139

■ 57.3542, 43.5168,
11.6298

■ 52.4105, 52.9458,
14.1747

■ 48.4220, 61.3225,
17.0547

■ 45.4966, 67.8757,
20.0650

■ 43.6696, 71.9481,
22.9062

■ 42.7990, 73.6223,
25.1156

Harmonies

Analogous

The Analogous color harmony consists of three colors that are next to each other on the color wheel.



84.1300, 3.9919, 1.1941



84.1281, 4.6485, 5.6564



84.1300, 2.8090, 9.6130

Triad

The Triadic color harmony groups three colors that are evenly spaced from another and form a triangle on the color wheel.



84.1300, 4.6461, 5.6578



84.1300, -9.8880, 11.1284



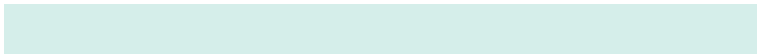
84.1300, -7.9524, -3.7285

Complementary

The Complementary color scheme is a pair of colors which are on the opposite of each other on the color wheel.



84.1281, 4.6485, 5.6564



90.1318, -13.4184, 4.0958

Split Complementary

Split-complementary colors differ from the complementary color scheme. The scheme consists of three colors, the original color and two neighbors of the complement color.



84.1300, -11.5550, -0.7858



84.1281, 4.6485, 5.6564



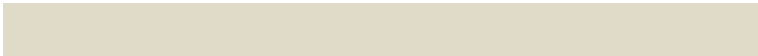
84.1300, -12.6553, 7.8297

Square

The Square scheme is like the rectangle color scheme, but the four colors are evenly spaced on the color wheel.



84.1300, 4.6461, 5.6578



84.1300, -5.6316, 12.6572



84.1300, -13.2588, 3.4866



84.1300, -3.3492, -4.3883

Rectangle

The Rectangle color scheme consists of four colors that form a rectangle on the color wheel.



84.1281, 4.6485, 5.6564



84.1300, 0.4418, 11.4848



84.1300, -13.2588, 3.4866



84.1300, -9.3176, -2.9660

Sweetspot

The Sweet Spot groups the original color and five complimentary colors.



84.1300, 4.6461, 5.6578



97.3698, -2.4006, 5.5966



84.3973, 6.9238, -4.6995



44.7252, -0.7455, 2.6115

0.0000, NaN, NaN



46.2646, -2.4686, 2.5136

Same Dimension

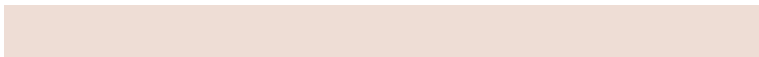
The Same Dimension uses a secret algorithm to generate beautiful new colors.



84.1300, 4.6461, 5.6578



88.8691, 7.5896, 6.3368



86.5292, -0.3879, 10.1755



39.7493, 1.7316, 2.6129



31.9867, 55.0609, 18.4770



9.2913, 16.1232, 4.3642

Inverse Universe

The Inverse Universe completely reimagines the original color for something new.



84.1300, 4.6461, 5.6578



88.8691, 7.5896, 6.3368



87.5955, -8.4475, -0.9230



39.7493, 1.7316, 2.6129



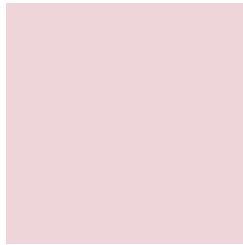
31.9867, 55.0609, 18.4770



9.2913, 16.1232, 4.3642

Previews

White Background



This preview shows how the HunterLab color 84.1281, 4.6485, 5.6564 looks on a white background.

Color Contrast Check

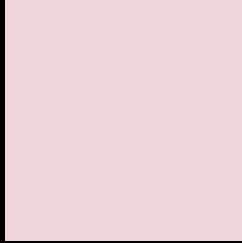
Large Text (above 18pt) WCAG AA × Fail

Any Text WCAG AA × Fail

Large Text (above 18pt) WCAG AAA × Fail

Any Text WCAG AAA × Fail

Black Background



This preview shows how the HunterLab color 84.1281, 4.6485, 5.6564 looks on a black background.

Color Contrast Check

Large Text (above 18pt) WCAG AA ✓ Pass

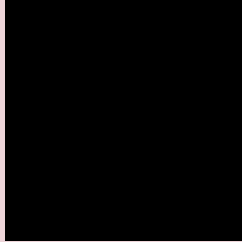
Any Text WCAG AA ✓ Pass

Large Text (above 18pt) WCAG AAA ✓ Pass

Any Text WCAG AAA ✓ Pass

If you want to check with other color combinations, try the [Color Contrast Checker](#).

HunterLab 84.1281, 4.6485, 5.6564 Background



This preview shows how black text looks on a background with the HunterLab color 84.1281, 4.6485, 5.6564.



This preview shows how white text looks on a background with the HunterLab color 84.1281, 4.6485,

5.6564.

Color Blindness Simulation

Color vision deficiency is a very complex topic, and I could not describe the different causes any better than Wikipedia does, so if you want to learn more, you should check out their [article about color blindness](#).

Dichromacy



Original Color

84.1281, 4.6485, 5.6564

Protanopia

84.2604, -2.5101, 4.2325

Deuteranopia

84.1412, 6.2247, 5.6993



Tritanopia

83.9885, 7.9420, 0.0780

Trichromacy



Original Color

84.1281, 4.6485, 5.6564

Protanomaly

84.0953, 0.0073, 4.5694

Deuteranomaly

84.0369, 5.8748, 5.5714

Tritanomaly

84.1543, 6.7106, 2.2882

Monochromacy



Original Color

84.1281, 4.6485, 5.6564

Achromatopsia

85.0326, -4.5371, 4.6200

Achromatomaly

84.6410, -1.1980, 4.7043

CSS Examples

Text

The CSS property to change the color of the text to HunterLab 84.1281, 4.6485, 5.6564 is called "color". The color property can be set on classes, ids or directly on the HTML element.

This example shows how text in the color `rgb(238, 213, 217)` looks like.

```
.text, #text, p{  
    color:rgb(238, 213, 217)  
}
```

If you want to add a text shadow in that color use the text-shadow property, you can generate a text shadow directly with our [CSS Text Shadow Generator](#).

Here you see how black text with a 4 pixel rgb(238, 213, 217) colored shadow looks like.

```
.shadow{ text-shadow: 4px 4px 2px rgb(238, 213, 217) }
```

Border

The CSS property to change the border of an element to HunterLab 84.1281, 4.6485, 5.6564 is called "border". The border property can be set on classes, ids or directly on the HTML element.

This example shows the color as border, it can be applied via the CSS property "border" or "border-color".

```
.border, #border, table{ border:4px solid rgb(238, 213, 217) }
```


If only the border color should be changed use the property `border-color`.

```
.border{ border-color:rgb(238, 213, 217) }
```

If you want to add a box shadow in that color use:

Here you see how a box with a 4 pixel `rgb(238, 213, 217)` colored shadow looks like.

```
.boxshadow{ -moz-box-shadow:4px 4px 4px  
4px rgb(238, 213, 217); -webkit-box-  
shadow:4px 4px 4px 4px rgb(238, 213, 217);  
box-shadow:4px 4px 4px 4px rgb(238, 213,  
217) }
```

Background

The CSS property to change the background color of an element to HunterLab 84.1281, 4.6485, 5.6564 is called "background". The background property can be set on classes, ids or directly on the HTML element.

```
.background, #background, body{  
background: rgb(238, 213, 217) }
```

If only the background color should be changed can be used:

```
.background{ background-color: rgb(238,  
213, 217) }
```

This example shows the color as background, it is applied via the CSS property "background".

To optimize and compress your CSS code, you can use our [online CSS compressor and optimizer](#) based on csstidy. If you want to create a linear or radial gradient as background or border, check our [CSS Gradient Generator](#).

Hey! You found this booklet interesting? Support Converting Colors with the new Membership Option!

The pro membership hides all ads, plus gives you double the colors in the color bucket, and more awesome pro features!

[Learn more, Memberships starting at \\$2.50/m!](#)

**Follow me
on Twitter!**

@ConvertingColor