

Converting Colors

HunterLab(84.1854, -0.9361,
10.5123)

Have a look what the booklet for
HunterLab(84.1854, -0.9361,
10.5123) contains.

HunterLab(84.0974, -0.7681, 10.6394)	3
<i>Conversions</i>	4
<i>Details</i>	6
<i>Harmonies</i>	12
<i>Previews</i>	24
<i>Color Blindness Simulation</i>	28
<i>CSS Examples</i>	31

Color

**HunterLab(84.0974, -0.7681,
10.6394)**

Conversions

Conversions Part 1

Format	Color
Hex	E8D8CE
RGB	232, 216, 206
RGB Percent	91%, 85%, 81%
CMY	0.0902, 0.1529, 0.1922
CMYK	0.00, 0.07, 0.11, 0.09
HSL	23°, 36%, 86%
HSV	23°, 11%, 91%
XYZ	68.9751, 70.7237, 68.4081
YIQ	219.6440, 12.7460, 0.2820

Conversions

Conversions Part 2

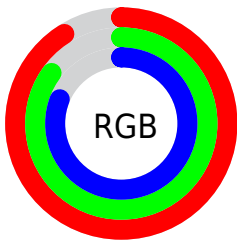
Format	Color
R _Y B	232, 222, 206
Decimal	15259854
CIE Lab	87.35, 3.84, 6.90
CIE LCh	87, 7.894, 60.893
Yxy	70.7268, 0.3314, 0.3398
Android (android.graphics.Color)	4293449934 (0xFFE8D8CE)
YUV	219.6440, -6.7265, 10.8362
Hunter-Lab	84.0974, -0.7681, 10.6394

Details

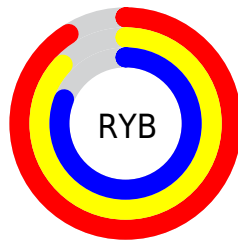
The HunterLab color $84.0974, -0.7681, 10.6394$ is a light color, and the websafe version is hex `CCCCCC`. A complement of this color would be $84.3736, -7.7287, -1.7926$, and the grayscale version is $84.4702, -4.5071, 4.5894$.

A 20% lighter version of the original color is $100.0000, -5.3358, 5.4332$, and $60.8168, 0.1622, 8.5179$ is the 20% darker color. If you saturate the color by 10%, you get $79.1721, 3.1795, 15.3729$, and if you desaturate by 10%, it is $89.2038, -4.3793, 5.5220$.

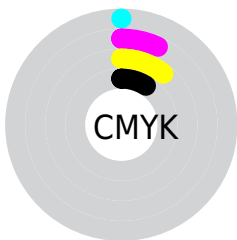
Distribution



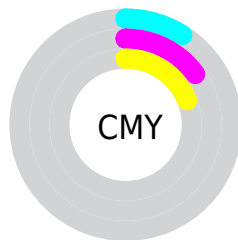
- Red (91%)
- Green (85%)
- Blue (81%)



- Red (91%)
- Yellow (87%)
- Blue (81%)



- Cyan (0%)
- Magenta (7%)
- Yellow (11%)
- Black (9%)



- Cyan (9%)
- Magenta (15%)
- Yellow (19%)

Brightness & Saturation Gradients

These gradients show how the HunterLab color 84.0974, -0.7681, 10.6394 changes by changing the brightness by 10 percent. The first figure shows a shift by +10% for each color and the second figure -10%.

Similar to the brightness gradients but the following saturation gradients show a change of the HunterLab color 84.0974, -0.7681, 10.6394 by changing the saturation by 10% instead.

84.0974, -0.7681,
10.6394

84.0974, -0.7681,
10.6394

215.1971, -6.4242,
20.1588

72.1937, -0.3159,
9.6677

109.6561, -1.7970,
12.6347

60.9099, 0.0956,
8.7092

123.2574, -2.3643,
13.6571

50.2843, 0.4604,
7.7634

137.3786, -2.9653,
14.6967

40.3603, 0.7737,
6.8273

152.0014, -3.5982,
15.7540

31.1918, 1.0294,
5.8959

167.1091, -4.2617,
16.8288

22.8470, 1.2187,
4.9612

182.6866, -4.9546,

15.4169, 1.3289,

17.9212

4.0079

198.7202, -5.6758,
19.0313

■ 9.0218, 1.3778,
3.6598

0.0000, NaN, NaN

■ 84.0974, -0.7681,
10.6394

■ 84.0974, -0.7681,
10.6394

■ 79.1721, 3.1795,
15.3729

■ 89.2038, -4.3793,
5.5220

■ 74.4419, 7.5002,
19.6591

■ 94.4689, -7.6778,
0.0668

■ 69.9311, 12.2167,
23.4299

■ 97.9265, -12.6258,
2.8401

■ 65.6652, 17.3444,
26.6065

■ 61.6726, 22.8815,
29.1036

■ 57.9844, 28.7988,
30.8361

■ 54.6326, 35.0265,
31.7341

■ 51.6483, 41.4392,
31.7695

■ 49.3414, 47.0496,
31.2276

Harmonies

Analogous

The Analogous color harmony consists of three colors that are next to each other on the color wheel.



84.0993, 2.1162, 8.1985



84.0974, -0.7681, 10.6394



84.0993, -4.6099, 11.4770

Triad

The Triadic color harmony groups three colors that are evenly spaced from another and form a triangle on the color wheel.



84.0993, -0.7704, 10.6407



84.0993, -11.9419, 4.4653



84.0993, -0.5622, -1.8520

Complementary

The Complementary color scheme is a pair of colors which are on the opposite of each other on the color wheel.



84.0974, -0.7681, 10.6394



84.3736, -7.7287, -1.7926

Split Complementary

Split-complementary colors differ from the complementary color scheme. The scheme consists of three colors, the original color and two neighbors of the complement color.



84.0993, -4.3737, -2.9606



84.0974, -0.7681, 10.6394



84.0993, -10.9019, 0.7885

Square

The Square scheme is like the rectangle color scheme, but the four colors are evenly spaced on the color wheel.



84.0993, -0.7704, 10.6407



84.0993, -11.0164, 8.0124



84.0993, -8.1496, -1.9732



84.0993, 2.2380, 0.9919

Rectangle

The Rectangle color scheme consists of four colors that form a rectangle on the color wheel.



84.0974, -0.7681, 10.6394



84.0993, -7.1795, 11.0432



84.0993, -8.1496, -1.9732



84.0993, -1.7699, -2.4456

Sweetspot

The Sweet Spot groups the original color and five complimentary colors.



84.0993, -0.7704, 10.6407



98.2603, -4.1749, 7.2070



81.5935, 7.1547, 0.1684



45.2459, -1.7855, 3.5509

0.0000, NaN, NaN



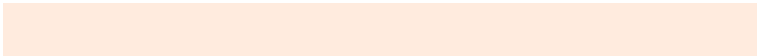
46.2646, -2.4686, 2.5136

Same Dimension

The Same Dimension uses a secret algorithm to generate beautiful new colors.



84.0993, -0.7704, 10.6407



92.5834, -0.0693, 12.8598



88.1096, -7.4566, 14.8685



39.0802, -0.6568, 4.4918



37.0697, 34.2438, 23.4417



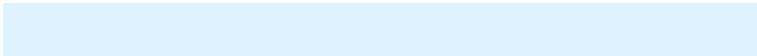
10.9131, 7.2167, 6.8509

Inverse Universe

The Inverse Universe completely reimagines the original color for something new.



84.3736, -7.7287, -1.7926



92.9386, -9.0825, -3.2455



80.3531, -1.0477, -6.8374



39.1869, -3.3601, -0.3385



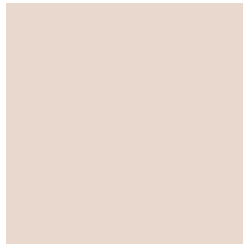
37.8771, -1.9940, -43.0387



11.1299, -1.8773, -9.8589

Previews

White Background



This preview shows how the HunterLab color 84.0974, -0.7681, 10.6394 looks on a white background.

Color Contrast Check

Large Text (above 18pt) WCAG AA × Fail

Any Text WCAG AA × Fail

Large Text (above 18pt) WCAG AAA × Fail

Any Text WCAG AAA × Fail

Black Background



This preview shows how the HunterLab color 84.0974, -0.7681, 10.6394 looks on a black background.

Color Contrast Check

Large Text (above 18pt) WCAG AA ✓ Pass

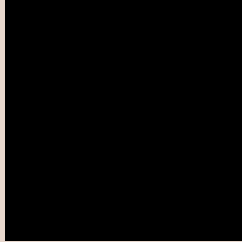
Any Text WCAG AA ✓ Pass

Large Text (above 18pt) WCAG AAA ✓ Pass

Any Text WCAG AAA ✓ Pass

If you want to check with other color combinations, try the [Color Contrast Checker](#).

HunterLab 84.0974, -0.7681, 10.6394 Background



This preview shows how black text looks on a background with the HunterLab color 84.0974, -0.7681, 10.6394.



This preview shows how white text looks on a background with the HunterLab color 84.0974, -0.7681,

Color Blindness Simulation

Color vision deficiency is a very complex topic, and I could not describe the different causes any better than Wikipedia does, so if you want to learn more, you should check out their [article about color blindness](#).

Dichromacy



Original Color

84.0974, -0.7681, 10.6394

Protanopia

84.1526, -3.6697, 10.1993

Deuteranopia

83.9679, 6.5675, 10.1732



Tritanopia

84.2068, 5.6823, -0.2068

Trichromacy



Original Color

84.0974, -0.7681, 10.6394

Protanomaly

84.0385, -2.4843, 10.0933

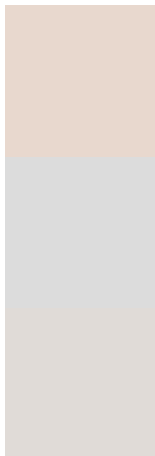
Deuteranomaly

84.0350, 3.7339, 10.1983

Tritanomaly

84.1463, 3.4190, 3.7107

Monochromacy



Original Color

84.0974, -0.7681, 10.6394

Achromatopsia

84.5987, -4.5140, 4.5964

Achromatomaly

84.5084, -3.5455, 6.9065

CSS Examples

Text

The CSS property to change the color of the text to HunterLab 84.0974, -0.7681, 10.6394 is called "color". The color property can be set on classes, ids or directly on the HTML element.

This example shows how text in the color `rgb(232, 216, 206)` looks like.

```
.text, #text, p{  
    color:rgb(232, 216, 206)  
}
```

If you want to add a text shadow in that color use the text-shadow property, you can generate a text shadow directly with our [CSS Text Shadow Generator](#).

Here you see how black text with a 4 pixel rgb(232, 216, 206) colored shadow looks like.

```
.shadow{ text-shadow: 4px 4px 2px rgb(232, 216, 206) }
```

Border

The CSS property to change the border of an element to HunterLab 84.0974, -0.7681, 10.6394 is called "border". The border property can be set on classes, ids or directly on the HTML element.

This example shows the color as border, it can be applied via the CSS property "border" or "border-color".

```
.border, #border, table{ border:4px solid rgb(232, 216, 206) }
```


If only the border color should be changed use the property border-color.

```
.border{ border-color:rgb(232, 216, 206) }
```

If you want to add a box shadow in that color use:

Here you see how a box with a 4 pixel rgb(232, 216, 206) colored shadow looks like.

```
.boxshadow{ -moz-box-shadow:4px 4px 4px  
4px rgb(232, 216, 206); -webkit-box-  
shadow:4px 4px 4px 4px rgb(232, 216, 206);  
box-shadow:4px 4px 4px 4px rgb(232, 216,  
206) }
```

Background

The CSS property to change the background color of an element to HunterLab 84.0974, -0.7681, 10.6394 is called "background". The background property can be set on classes, ids or directly on the HTML element.

```
.background, #background, body{  
background: rgb(232, 216, 206) }
```

If only the background color should be changed can be used:

```
.background{ background-color: rgb(232,  
216, 206) }
```

This example shows the color as background, it is applied via the CSS property "background".

To optimize and compress your CSS code, you can use our [online CSS compressor and optimizer](#) based on csstidy. If you want to create a linear or radial gradient as background or border, check our [CSS Gradient Generator](#).

Hey! You found this booklet interesting? Support Converting Colors with the new Membership Option!

The pro membership hides all ads, plus gives you double the colors in the color bucket, and more awesome pro features!

[Learn more, Memberships starting at \\$2.50/m!](#)

**Follow me
on Twitter!**

@ConvertingColor