

Converting Colors

HunterLab(84.2547, 0.8670,
13.4799)

Have a look what the booklet for
HunterLab(84.2547, 0.8670,
13.4799) contains.

HunterLab(84.2307, 0.9084, 13.4549)	3
<i>Conversions</i>	4
<i>Details</i>	6
<i>Harmonies</i>	12
<i>Previews</i>	24
<i>Color Blindness Simulation</i>	28
<i>CSS Examples</i>	31

Color

**HunterLab(84.2307, 0.9084,
13.4549)**

Conversions

Conversions Part 1

Format	Color
Hex	EED7C8
RGB	238, 215, 200
RGB Percent	93%, 84%, 78%
CMY	0.0667, 0.1568, 0.2157
CMYK	0.00, 0.10, 0.16, 0.07
HSL	24°, 53%, 86%
HSV	24°, 16%, 93%
XYZ	69.9856, 70.9481, 64.6492
YIQ	220.1670, 18.5230, 0.2110

Conversions

Conversions Part 2

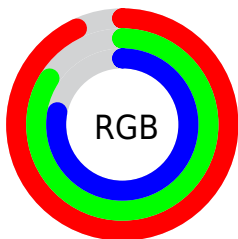
Format	Color
R_{YB}	238, 225, 200
Decimal	15652808
CIE _{Lab}	87.46, 5.55, 10.28
CIE _{LCh}	87, 11.685, 61.629
Yxy	70.9513, 0.3404, 0.3451
Android (android.graphics.Color)	4293842888 (0xFFEED7C8)
YUV	220.1670, -9.9423, 15.6395
Hunter-Lab	84.2307, 0.9084, 13.4549

Details

The HunterLab color $84.2307, 0.9084, 13.4549$ is a light color, and the websafe version is hex `CCCCCC`. A complement of this color would be $84.3956, -8.8626, -4.9779$, and the grayscale version is $84.7088, -4.5198, 4.6024$.

A 20% lighter version of the original color is $100.0000, -5.3358, 5.4332$, and $60.9607, 1.8071, 11.1464$ is the 20% darker color. If you saturate the color by 10%, you get $79.3148, 5.0321, 18.1792$, and if you desaturate by 10%, it is $89.3382, -2.8531, 8.2916$.

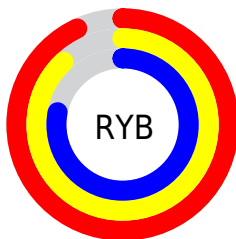
Distribution



Red (93%)

Green (84%)

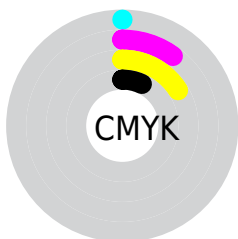
Blue (78%)



Red (93%)

Yellow (88%)

Blue (78%)

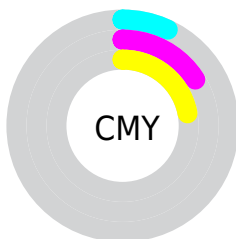


Cyan (0%)

Magenta (10%)

Yellow (16%)

Black (7%)



Cyan (7%)

Magenta (16%)

Yellow (22%)

Brightness & Saturation Gradients

These gradients show how the HunterLab color 84.2307, 0.9084, 13.4549 changes by changing the brightness by 10 percent. The first figure shows a shift by +10% for each color and the second figure -10%.

Similar to the brightness gradients but the following saturation gradients show a change of the HunterLab color 84.2307, 0.9084, 13.4549 by changing the saturation by 10% instead.

84.2307, 0.9084,
13.4549

84.2307, 0.9084,
13.4549

215.3795, -4.1554,
24.1891

72.3204, 1.2811,
12.3153

109.8018, 0.0277,
15.7601

61.0297, 1.6092,
11.1781

123.4088, -0.4699,
16.9267

50.3966, 1.8857,
10.0405

137.5357, -1.0035,
18.1047

40.4647, 2.1049,
8.8964

152.1638, -1.5713,
19.2950

31.2876, 2.2593,
7.7362

167.2767, -2.1717,
20.4982

22.9334, 2.3385,
6.5446

182.8593, -2.8033,

15.4927, 2.3267,

21.7147

5.2943

198.8977, -3.4649,
22.9449

■ 9.0885, 2.2256,
5.1840

0.0000, NaN, NaN

■ 84.2307, 0.9084,
13.4549

■ 84.2307, 0.9084,
13.4549

■ 79.3148, 5.0321,
18.1792

■ 89.3382, -2.8531,
8.2916

■ 74.6056, 9.5542,
22.3941

■ 94.6136, -6.2762,
2.7422

■ 70.1285, 14.4947,
26.0248

■ 98.4466, -10.7825,
3.4955

■ 65.9100, 19.8632,
28.9870

■ 61.9793, 25.6486,
31.1933

■ 58.3675, 31.8070,
32.5638

■ 55.1058, 38.2481,
33.0456

■ 52.2223, 44.8196,
32.6508

■ 51.1649, 47.4313,
32.3579

Harmonies

Analogous

The Analogous color harmony consists of three colors that are next to each other on the color wheel.



84.2326, 5.2811, 9.9987



84.2307, 0.9084, 13.4549



84.2326, -4.8180, 14.5828

Triad

The Triadic color harmony groups three colors that are evenly spaced from another and form a triangle on the color wheel.



84.2326, 0.9059, 13.4562



84.2326, -15.4366, 4.2807



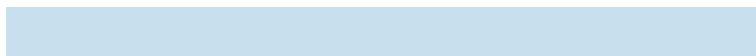
84.2326, 1.4734, -5.0310

Complementary

The Complementary color scheme is a pair of colors which are on the opposite of each other on the color wheel.



84.2307, 0.9084, 13.4549



84.3956, -8.8626, -4.9779

Split Complementary

Split-complementary colors differ from the complementary color scheme. The scheme consists of three colors, the original color and two neighbors of the complement color.



84.2326, -4.1795, -6.8117



84.2307, 0.9084, 13.4549



84.2326, -13.8522, -1.2137

Square

The Square scheme is like the rectangle color scheme, but the four colors are evenly spaced on the color wheel.



84.2326, 0.9059, 13.4562



84.2326, -14.1572, 9.5066



84.2326, -9.7709, -5.3701



84.2326, 5.6150, -0.6527

Rectangle

The Rectangle color scheme consists of four colors that form a rectangle on the color wheel.



84.2307, 0.9084, 13.4549



84.2326, -8.5997, 13.9263



84.2326, -9.7709, -5.3701



84.2326, -0.3182, -5.9661

Sweetspot

The Sweet Spot groups the original color and five complimentary colors.



84.2326, 0.9059, 13.4562



97.1501, -3.4514, 8.4155



80.5219, 12.6941, -1.7911



44.7625, -1.4709, 4.0836

0.0000, NaN, NaN



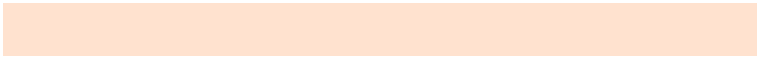
46.2646, -2.4686, 2.5136

Same Dimension

The Same Dimension uses a secret algorithm to generate beautiful new colors.



84.2326, 0.9059, 13.4562



89.4216, 2.3211, 16.1926



89.9706, -8.6788, 19.2772



40.9668, -0.7359, 4.7522



38.5228, 34.6219, 24.3437



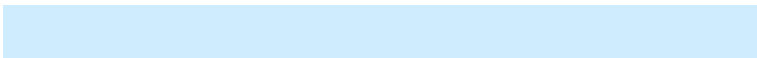
11.9301, 7.9440, 7.4903

Inverse Universe

The Inverse Universe completely reimagines the original color for something new.



84.3956, -8.8626, -4.9779



89.6305, -10.2497, -7.5319



78.6418, 0.7177, -12.5133



41.0127, -3.4708, -0.4081



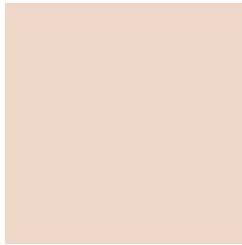
38.5170, -1.1078, -45.7516



11.9483, -1.6853, -11.2962

Previews

White Background



This preview shows how the HunterLab color 84.2307, 0.9084, 13.4549 looks on a white background.

Color Contrast Check

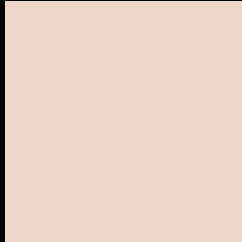
Large Text (above 18pt) WCAG AA × Fail

Any Text WCAG AA × Fail

Large Text (above 18pt) WCAG AAA × Fail

Any Text WCAG AAA × Fail

Black Background



This preview shows how the HunterLab color 84.2307, 0.9084, 13.4549 looks on a black background.

Color Contrast Check

Large Text (above 18pt) WCAG AA ✓ Pass

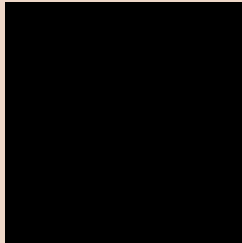
Any Text WCAG AA ✓ Pass

Large Text (above 18pt) WCAG AAA ✓ Pass

Any Text WCAG AAA ✓ Pass

If you want to check with other color combinations, try the [Color Contrast Checker](#).

HunterLab 84.2307, 0.9084, 13.4549 Background



This preview shows how black text looks on a background with the HunterLab color 84.2307, 0.9084, 13.4549.

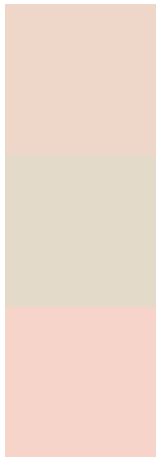


This preview shows how white text looks on a background with the HunterLab color 84.2307, 0.9084,

Color Blindness Simulation

Color vision deficiency is a very complex topic, and I could not describe the different causes any better than Wikipedia does, so if you want to learn more, you should check out their [article about color blindness](#).

Dichromacy



Original Color

84.2307, 0.9084, 13.4549

Protanopia

84.1059, -4.1180, 12.3633

Deuteranopia

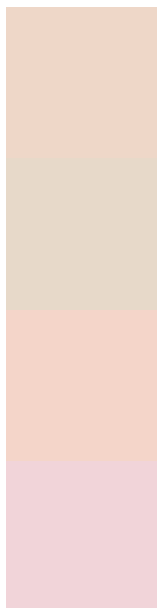
84.3079, 5.8423, 13.1916



Tritanopia

84.2685, 8.8074, 0.9484

Trichromacy



Original Color

84.2307, 0.9084, 13.4549

Protanomaly

84.1616, -2.4016, 12.8896

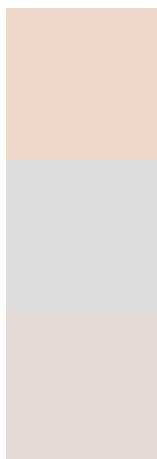
Deuteranomaly

84.2844, 4.2343, 13.1382

Tritanomaly

84.1412, 6.2247, 5.6993

Monochromacy



Original Color

84.2307, 0.9084, 13.4549

Achromatopsia

84.5987, -4.5140, 4.5964

Achromatomaly

84.4262, -2.3680, 7.7731

CSS Examples

Text

The CSS property to change the color of the text to HunterLab 84.2307, 0.9084, 13.4549 is called "color". The color property can be set on classes, ids or directly on the HTML element.

This example shows how text in the color `rgb(238, 215, 200)` looks like.

```
.text, #text, p{  
    color:rgb(238, 215, 200)  
}
```

If you want to add a text shadow in that color use the text-shadow property, you can generate a text shadow directly with our [CSS Text Shadow Generator](#).

Here you see how black text with a 4 pixel rgb(238, 215, 200) colored shadow looks like.

```
.shadow{ text-shadow: 4px 4px 2px rgb(238, 215, 200) }
```

Border

The CSS property to change the border of an element to HunterLab 84.2307, 0.9084, 13.4549 is called "border". The border property can be set on classes, ids or directly on the HTML element.

This example shows the color as border, it can be applied via the CSS property "border" or "border-color".

```
.border, #border, table{ border:4px solid rgb(238, 215, 200) }
```


If only the border color should be changed use the property `border-color`.

```
.border{ border-color:rgb(238, 215, 200) }
```

If you want to add a box shadow in that color use:

Here you see how a box with a 4 pixel `rgb(238, 215, 200)` colored shadow looks like.

```
.boxshadow{ -moz-box-shadow:4px 4px 4px  
4px rgb(238, 215, 200); -webkit-box-  
shadow:4px 4px 4px 4px rgb(238, 215, 200);  
box-shadow:4px 4px 4px 4px rgb(238, 215,  
200) }
```

Background

The CSS property to change the background color of an element to HunterLab 84.2307, 0.9084, 13.4549 is called "background". The background property can be set on classes, ids or directly on the HTML element.

```
.background, #background, body{  
background: rgb(238, 215, 200) }
```

If only the background color should be changed can be used:

```
.background{ background-color: rgb(238,  
215, 200) }
```

This example shows the color as background, it is applied via the CSS property "background".

To optimize and compress your CSS code, you can use our [online CSS compressor and optimizer](#) based on csstidy. If you want to create a linear or radial gradient as background or border, check our [CSS Gradient Generator](#).

Hey! You found this booklet interesting? Support Converting Colors with the new Membership Option!

The pro membership hides all ads, plus gives you double the colors in the color bucket, and more awesome pro features!

[Learn more, Memberships starting at \\$2.50/m!](#)

**Follow me
on Twitter!**

@ConvertingColor