

Converting Colors

HunterLab(84.3877, 2.7771,
4.3341)

Have a look what the booklet for
HunterLab(84.3877, 2.7771, 4.3341)
contains.

HunterLab(84.4160, 2.7215, 4.5078)	3
<i>Conversions</i>	4
<i>Details</i>	6
<i>Harmonies</i>	12
<i>Previews</i>	24
<i>Color Blindness Simulation</i>	28
<i>CSS Examples</i>	31

Color

**HunterLab(84.4160, 2.7215,
4.5078)**

Conversions

Conversions Part 1

Format	Color
Hex	EAD7DC
RGB	234, 215, 220
RGB Percent	92%, 84%, 86%
CMY	0.0823, 0.1568, 0.1372
CMYK	0.00, 0.08, 0.06, 0.08
HSL	344°, 31%, 88%
HSV	344°, 8%, 92%
XYZ	71.1504, 71.2606, 77.7148
YIQ	221.2510, 9.7190, 5.5830

Conversions

Conversions Part 2

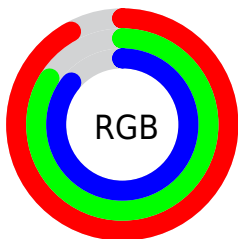
Format	Color
RYB	234, 215, 220
Decimal	15390684
CIELab	87.61, 7.39, -0.09
CIELCh	88, 7.391, 359.273
Yxy	71.2637, 0.3232, 0.3237
Android (android.graphics.Color)	4293580764 (0xFFEAD7DC)
YUV	221.2510, -0.6167, 11.1809
Hunter-Lab	84.4160, 2.7215, 4.5078

Details

The HunterLab color $84.4160, 2.7215, 4.5078$ is a light color, and the websafe version is hex `CCCCCC`. A complement of this color would be $88.8548, -11.6735, 5.0812$, and the grayscale version is $85.1429, -4.5430, 4.6260$.

A 20% lighter version of the original color is $100.0000, -5.3358, 5.4332$, and $61.0927, 3.3047, 3.1560$ is the 20% darker color. If you saturate the color by 10%, you get $77.0188, 12.2595, 4.2963$, and if you desaturate by 10%, it is $92.1993, -6.5693, 5.0531$.

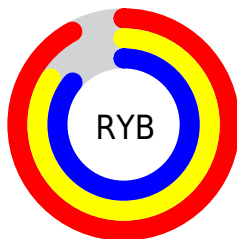
Distribution



Red (92%)

Green (84%)

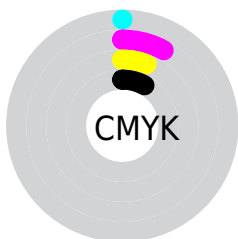
Blue (86%)



Red (92%)

Yellow (84%)

Blue (86%)

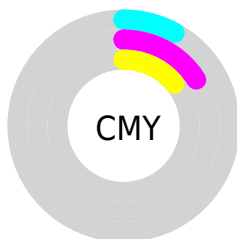


Cyan (0%)

Magenta (8%)

Yellow (6%)

Black (8%)



Cyan (8%)

Magenta (16%)

Yellow (14%)

Brightness & Saturation Gradients

These gradients show how the HunterLab color 84.4160, 2.7215, 4.5078 changes by changing the brightness by 10 percent. The first figure shows a shift by +10% for each color and the second figure -10%.

Similar to the brightness gradients but the following saturation gradients show a change of the HunterLab color 84.4160, 2.7215, 4.5078 by changing the saturation by 10% instead.

84.4160, 2.7215,
4.5078

84.4160, 2.7215,
4.5078

215.6327, -1.7120,
11.6201

72.4965, 3.0104,
3.8645

110.0042, 1.9985,
5.8940

61.1961, 3.2502,
3.2539

123.6192, 1.5751,
6.6314

50.5527, 3.4333,
2.6793

137.7538, 1.1132,
7.3972

40.6099, 3.5533,
2.1432

152.3894, 0.6146,
8.1904

31.4209, 3.6014,
1.6485

167.5096, 0.0814,
9.0101

23.0535, 3.5651,
1.1991

183.0991, -0.4851,

15.5982, 3.4265,

9.8554

0.8001

199.1444, -1.0833,
10.7257

■ 9.1804, 3.1703,
0.4574

0.0000, NaN, NaN

■ 84.4160, 2.7215,
4.5078

■ 84.4160, 2.7215,
4.5078

■ 77.0188, 12.2595,
4.2963

■ 92.1993, -6.5693,
5.0531

■ 70.0701, 22.0307,
4.4857

■ 98.0816, -12.1082,
3.2937

■ 63.6561, 31.9499,
5.1586

■ 98.0982, -12.0160,
3.0569

■ 57.8801, 41.8250,
6.3981

■ 52.8619, 51.2977,
8.2675

■ 48.7284, 59.8031,
10.7727

■ 45.5900, 66.6138,
13.8149

■ 43.5013, 71.0469,
17.1594

■ 42.3881, 72.9057,
20.4450

Harmonies

Analogous

The Analogous color harmony consists of three colors that are next to each other on the color wheel.



84.4178, 1.6907, 1.0655



84.4160, 2.7215, 4.5078



84.4178, 1.7835, 7.8360

Triad

The Triadic color harmony groups three colors that are evenly spaced from another and form a triangle on the color wheel.



84.4178, 2.7192, 4.5092



84.4178, -7.9575, 10.2849



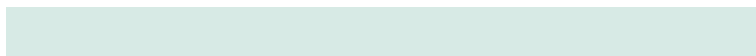
84.4178, -8.1113, -1.4285

Complementary

The Complementary color scheme is a pair of colors which are on the opposite of each other on the color wheel.



84.4160, 2.7215, 4.5078



88.8548, -11.6735, 5.0812

Split Complementary

Split-complementary colors differ from the complementary color scheme. The scheme consists of three colors, the original color and two neighbors of the complement color.



84.4178, -10.6221, 1.2204



84.4160, 2.7215, 4.5078



84.4178, -10.5345, 7.9786

Square

The Square scheme is like the rectangle color scheme, but the four colors are evenly spaced on the color wheel.



84.4178, 2.7192, 4.5092



84.4178, -4.4186, 11.0825



84.4178, -11.5016, 4.6809



84.4178, -4.5991, -2.4519

Rectangle

The Rectangle color scheme consists of four colors that form a rectangle on the color wheel.



84.4160, 2.7215, 4.5078



84.4178, 0.1806, 9.5619



84.4178, -11.5016, 4.6809



84.4178, -9.0981, -0.6931

Sweetspot

The Sweet Spot groups the original color and five complimentary colors.



84.4178, 2.7192, 4.5092



98.2595, -3.2899, 5.2985



84.3752, 3.4908, -2.6470



45.4991, -1.5691, 2.4543

0.0000, NaN, NaN



46.2646, -2.4686, 2.5136

Same Dimension

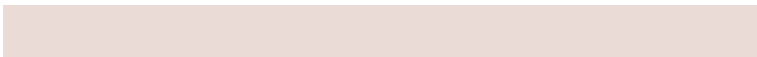
The Same Dimension uses a secret algorithm to generate beautiful new colors.



84.4178, 2.7192, 4.5092



91.4570, 5.0051, 4.8952



85.6102, -0.4368, 8.2178



38.8833, 1.8613, 2.0793



31.6861, 54.9269, 15.3311



8.9655, 15.7100, 3.0322

Inverse Universe

The Inverse Universe completely reimagines the original color for something new.



84.4178, 2.7192, 4.5092



91.4570, 5.0051, 4.8952



87.6028, -8.5239, 1.1468



38.8833, 1.8613, 2.0793



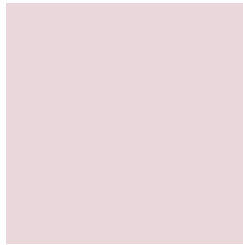
31.6861, 54.9269, 15.3311



8.9655, 15.7100, 3.0322

Previews

White Background



This preview shows how the HunterLab color 84.4160, 2.7215, 4.5078 looks on a white background.

Color Contrast Check

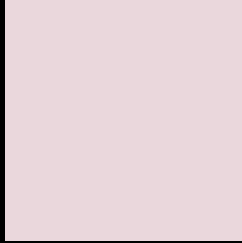
Large Text (above 18pt) WCAG AA × Fail

Any Text WCAG AA × Fail

Large Text (above 18pt) WCAG AAA × Fail

Any Text WCAG AAA × Fail

Black Background



This preview shows how the HunterLab color 84.4160, 2.7215, 4.5078 looks on a black background.

Color Contrast Check

Large Text (above 18pt) WCAG AA ✓ Pass

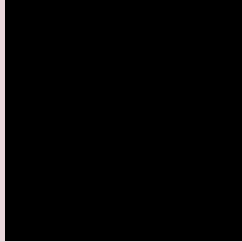
Any Text WCAG AA ✓ Pass

Large Text (above 18pt) WCAG AAA ✓ Pass

Any Text WCAG AAA ✓ Pass

If you want to check with other color combinations, try the [Color Contrast Checker](#).

HunterLab 84.4160, 2.7215, 4.5078 Background



This preview shows how black text looks on a background with the HunterLab color 84.4160, 2.7215, 4.5078.



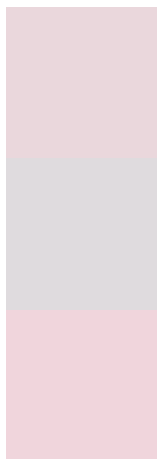
This preview shows how white text looks on a background with the HunterLab color 84.4160, 2.7215,

4.5078.

Color Blindness Simulation

Color vision deficiency is a very complex topic, and I could not describe the different causes any better than Wikipedia does, so if you want to learn more, you should check out their [article about color blindness](#).

Dichromacy



Original Color

84.4160, 2.7215, 4.5078

Protanopia

84.6315, -2.6844, 3.6883

Deuteranopia

84.4281, 5.8443, 4.5768



Tritanopia

84.2400, 5.8604, -0.6793

Trichromacy



Original Color

84.4160, 2.7215, 4.5078

Protanomaly

84.6724, -1.0273, 4.2565

Deuteranomaly

84.5208, 4.6206, 4.6646

Tritanomaly

84.4075, 4.6221, 1.5519

Monochromacy



Original Color

84.4160, 2.7215, 4.5078

Achromatopsia

85.0326, -4.5371, 4.6200

Achromatomaly

84.8836, -1.8774, 4.4909

CSS Examples

Text

The CSS property to change the color of the text to HunterLab 84.4160, 2.7215, 4.5078 is called "color". The color property can be set on classes, ids or directly on the HTML element.

This example shows how text in the color `rgb(234, 215, 220)` looks like.

```
.text, #text, p{  
    color:rgb(234, 215, 220)  
}
```

If you want to add a text shadow in that color use the text-shadow property, you can generate a text shadow directly with our [CSS Text Shadow Generator](#).

Here you see how black text with a 4 pixel rgb(234, 215, 220) colored shadow looks like.

```
.shadow{ text-shadow: 4px 4px 2px rgb(234, 215, 220) }
```

Border

The CSS property to change the border of an element to HunterLab 84.4160, 2.7215, 4.5078 is called "border".

The border property can be set on classes, ids or directly on the HTML element.

This example shows the color as border, it can be applied via the CSS property "border" or "border-color".

```
.border, #border, table{ border:4px solid rgb(234, 215, 220) }
```


If only the border color should be changed use the property `border-color`.

```
.border{ border-color:rgb(234, 215, 220) }
```

If you want to add a box shadow in that color use:

Here you see how a box with a 4 pixel `rgb(234, 215, 220)` colored shadow looks like.

```
.boxshadow{ -moz-box-shadow:4px 4px 4px  
4px rgb(234, 215, 220); -webkit-box-  
shadow:4px 4px 4px 4px rgb(234, 215, 220);  
box-shadow:4px 4px 4px 4px rgb(234, 215,  
220) }
```

Background

The CSS property to change the background color of an element to HunterLab 84.4160, 2.7215, 4.5078 is called "background". The background property can be set on classes, ids or directly on the HTML element.

```
.background, #background, body{  
background: rgb(234, 215, 220) }
```

If only the background color should be changed can be used:

```
.background{ background-color: rgb(234,  
215, 220) }
```

This example shows the color as background, it is applied via the CSS property "background".

To optimize and compress your CSS code, you can use our [online CSS compressor and optimizer](#) based on csstidy. If you want to create a linear or radial gradient as background or border, check our [CSS Gradient Generator](#).

Hey! You found this booklet interesting? Support Converting Colors with the new Membership Option!

The pro membership hides all ads, plus gives you double the colors in the color bucket, and more awesome pro features!

[Learn more, Memberships starting at \\$2.50/m!](#)

**Follow me
on Twitter!**

@ConvertingColor