

Converting Colors

HunterLab(84.3880, 3.8567,
6.9109)

Have a look what the booklet for
HunterLab(84.3880, 3.8567, 6.9109)
contains.

HunterLab(84.3662, 3.7899, 6.8714)	3
<i>Conversions</i>	4
<i>Details</i>	6
<i>Harmonies</i>	12
<i>Previews</i>	24
<i>Color Blindness Simulation</i>	28
<i>CSS Examples</i>	31

Color

**HunterLab(84.3662, 3.7899,
6.8714)**

Conversions

Conversions Part 1

Format	Color
Hex	EED6D7
RGB	238, 214, 215
RGB Percent	93%, 84%, 84%
CMY	0.0667, 0.1608, 0.1569
CMYK	0.00, 0.10, 0.10, 0.07
HSL	358°, 41%, 89%
HSV	358°, 10%, 93%
XYZ	71.5722, 71.1766, 74.2561
YIQ	221.2900, 13.9830, 5.3990

Conversions

Conversions Part 2

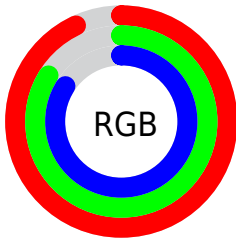
Format	Color
R _Y B	238, 214, 215
Decimal	15652567
CIE Lab	87.57, 8.46, 2.53
CIE LCh	88, 8.831, 16.634
Yxy	71.1797, 0.3298, 0.3280
Android (android.graphics.Color)	4293842647 (0xFFEED6D7)
YUV	221.2900, -3.1010, 14.6547
Hunter-Lab	84.3662, 3.7899, 6.8714

Details

The HunterLab color $84.3662, 3.7899, 6.8714$ is a light color, and the websafe version is hex `CCCCCC`. A complement of this color would be $90.3114, -12.5849, 2.8267$, and the grayscale version is $85.1689, -4.5444, 4.6274$.

A 20% lighter version of the original color is $100.0000, -5.3358, 5.4332$, and $61.0569, 4.3451, 5.4037$ is the 20% darker color. If you saturate the color by 10%, you get $76.7512, 12.7941, 8.9091$, and if you desaturate by 10%, it is $92.3988, -4.8642, 5.0382$.

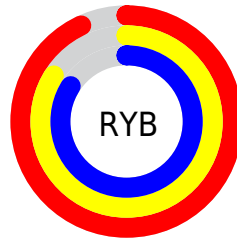
Distribution



Red (93%)

Green (84%)

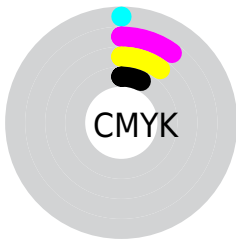
Blue (84%)



Red (93%)

Yellow (84%)

Blue (84%)

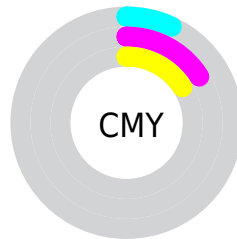


Cyan (0%)

Magenta (10%)

Yellow (10%)

Black (7%)



Cyan (7%)

Magenta (16%)

Yellow (16%)

Brightness & Saturation Gradients

These gradients show how the HunterLab color 84.3662, 3.7899, 6.8714 changes by changing the brightness by 10 percent. The first figure shows a shift by +10% for each color and the second figure -10%.

Similar to the brightness gradients but the following saturation gradients show a change of the HunterLab color 84.3662, 3.7899, 6.8714 by changing the saturation by 10% instead.

84.3662, 3.7899,
6.8714

84.3662, 3.7899,
6.8714

215.5647, -0.2742,
14.8720

72.4492, 4.0294,
6.1078

109.9498, 3.1590,
8.4815

61.1514, 4.2175,
5.3701

123.5627, 2.7792,
9.3238

50.5108, 4.3461,
4.6603

137.6952, 2.3592,
10.1907

40.5709, 4.4081,
3.9790

152.3288, 1.9013,
11.0814

31.3850, 4.3940,
3.3268

167.4470, 1.4074,
11.9954

23.0212, 4.2905,
2.7034

183.0347, 0.8792,

15.5698, 4.0781,

12.9321

2.1077

199.0781, 0.3182,
13.8912

■ 9.1558, 3.7434,
1.6428

0.0000, NaN, NaN

■ 84.3662, 3.7899,
6.8714

■ 84.3662, 3.7899,
6.8714

■ 76.7512, 12.7941,
8.9091

■ 92.3988, -4.8642,
5.0382

■ 69.6248, 22.1546,
11.1679

■ 98.4466, -10.7824,
3.4955

■ 63.0848, 31.8020,
13.6542

■ 57.2483, 41.5484,
16.3398

■ 52.2504, 51.0153,
19.1366

■ 48.2305, 59.5878,
21.8728

■ 45.3009, 66.4764,
24.2955

■ 43.4988, 70.9750,
26.1346

■ 42.6603, 73.1077,
27.1727

Harmonies

Analogous

The Analogous color harmony consists of three colors that are next to each other on the color wheel.



84.3681, 3.9177, 2.7031



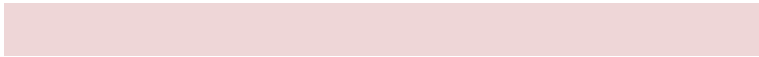
84.3662, 3.7899, 6.8714



84.3681, 1.4058, 10.2578

Triad

The Triadic color harmony groups three colors that are evenly spaced from another and form a triangle on the color wheel.



84.3681, 3.7875, 6.8728



84.3681, -10.5928, 9.9543



84.3681, -6.4607, -3.6531

Complementary

The Complementary color scheme is a pair of colors which are on the opposite of each other on the color wheel.



84.3662, 3.7899, 6.8714



90.3114, -12.5849, 2.8267

Split Complementary

Split-complementary colors differ from the complementary color scheme. The scheme consists of three colors, the original color and two neighbors of the complement color.



84.3681, -10.2597, -1.4954



84.3662, 3.7899, 6.8714



84.3681, -12.6120, 6.4390

Square

The Square scheme is like the rectangle color scheme, but the four colors are evenly spaced on the color wheel.



84.3681, 3.7875, 6.8728



84.3681, -6.9239, 11.9733



84.3681, -12.4914, 2.2465



84.3681, -2.0609, -3.5221

Rectangle

The Rectangle color scheme consists of four colors that form a rectangle on the color wheel.



84.3662, 3.7899, 6.8714



84.3681, -1.1110, 11.6782



84.3681, -12.4914, 2.2465



84.3681, -7.8485, -3.1668

Sweetspot

The Sweet Spot groups the original color and five complimentary colors.



84.3681, 3.7875, 6.8728



97.3409, -2.5581, 6.0088



84.9938, 7.3853, -3.9250



44.7084, -0.8374, 2.8525

0.0000, NaN, NaN



46.2646, -2.4686, 2.5136

Same Dimension

The Same Dimension uses a secret algorithm to generate beautiful new colors.



84.3681, 3.7875, 6.8728



89.5876, 5.9769, 7.8469



87.6225, -2.0388, 10.9068



39.7108, 1.5243, 3.1626



31.8712, 54.6327, 20.1883



9.2127, 15.8324, 5.5238

Inverse Universe

The Inverse Universe completely reimagines the original color for something new.



84.3681, 3.7875, 6.8728



89.5876, 5.9769, 7.8469



86.9019, -6.8770, -1.7599



39.7108, 1.5243, 3.1626



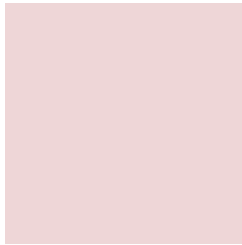
31.8712, 54.6327, 20.1883



9.2127, 15.8324, 5.5238

Previews

White Background



This preview shows how the HunterLab color 84.3662, 3.7899, 6.8714 looks on a white background.

Color Contrast Check

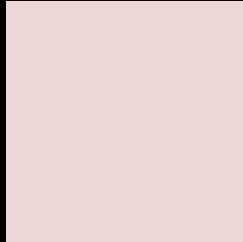
Large Text (above 18pt) WCAG AA × Fail

Any Text WCAG AA × Fail

Large Text (above 18pt) WCAG AAA × Fail

Any Text WCAG AAA × Fail

Black Background



This preview shows how the HunterLab color 84.3662, 3.7899, 6.8714 looks on a black background.

Color Contrast Check

Large Text (above 18pt) WCAG AA ✓ Pass

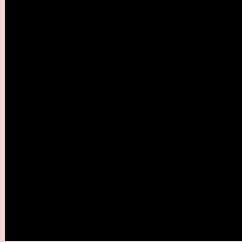
Any Text WCAG AA ✓ Pass

Large Text (above 18pt) WCAG AAA ✓ Pass

Any Text WCAG AAA ✓ Pass

If you want to check with other color combinations, try the [Color Contrast Checker](#).

HunterLab 84.3662, 3.7899, 6.8714 Background



This preview shows how black text looks on a background with the HunterLab color 84.3662, 3.7899, 6.8714.



This preview shows how white text looks on a background with the HunterLab color 84.3662, 3.7899,

6.8714.

Color Blindness Simulation

Color vision deficiency is a very complex topic, and I could not describe the different causes any better than Wikipedia does, so if you want to learn more, you should check out their [article about color blindness](#).

Dichromacy



Original Color

84.3662, 3.7899, 6.8714

Protanopia

84.6004, -3.0426, 5.5917

Deuteranopia

84.1846, 6.2471, 6.7050



Tritanopia

84.4212, 7.9281, 0.0972

Trichromacy



Original Color

84.3662, 3.7899, 6.8714

Protanomaly

84.4355, -0.5184, 5.9237

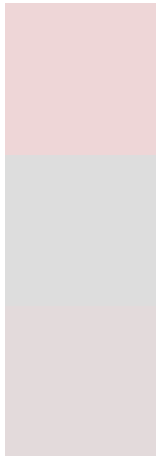
Deuteranomaly

84.3775, 5.3650, 6.9119

Tritanomaly

84.4518, 6.1777, 2.6372

Monochromacy



Original Color

84.3662, 3.7899, 6.8714

Achromatopsia

85.0326, -4.5371, 4.6200

Achromatomaly

84.6098, -1.3678, 5.1497

CSS Examples

Text

The CSS property to change the color of the text to HunterLab 84.3662, 3.7899, 6.8714 is called "color". The color property can be set on classes, ids or directly on the HTML element.

This example shows how text in the color `rgb(238, 214, 215)` looks like.

```
.text, #text, p{  
    color:rgb(238, 214, 215)  
}
```

If you want to add a text shadow in that color use the text-shadow property, you can generate a text shadow directly with our [CSS Text Shadow Generator](#).

Here you see how black text with a 4 pixel rgb(238, 214, 215) colored shadow looks like.

```
.shadow{ text-shadow: 4px 4px 2px rgb(238, 214, 215) }
```

Border

The CSS property to change the border of an element to HunterLab 84.3662, 3.7899, 6.8714 is called "border". The border property can be set on classes, ids or directly on the HTML element.

This example shows the color as border, it can be applied via the CSS property "border" or "border-color".

```
.border, #border, table{ border:4px solid rgb(238, 214, 215) }
```


If only the border color should be changed use the property `border-color`.

```
.border{ border-color:rgb(238, 214, 215) }
```

If you want to add a box shadow in that color use:

Here you see how a box with a 4 pixel `rgb(238, 214, 215)` colored shadow looks like.

```
.boxshadow{ -moz-box-shadow:4px 4px 4px  
4px rgb(238, 214, 215); -webkit-box-  
shadow:4px 4px 4px 4px rgb(238, 214, 215);  
box-shadow:4px 4px 4px 4px rgb(238, 214,  
215) }
```

Background

The CSS property to change the background color of an element to HunterLab 84.3662, 3.7899, 6.8714 is called "background". The background property can be set on classes, ids or directly on the HTML element.

```
.background, #background, body{  
background: rgb(238, 214, 215) }
```

If only the background color should be changed can be used:

```
.background{ background-color: rgb(238,  
214, 215) }
```

This example shows the color as background, it is applied via the CSS property "background".

To optimize and compress your CSS code, you can use our [online CSS compressor and optimizer](#) based on csstidy. If you want to create a linear or radial gradient as background or border, check our [CSS Gradient Generator](#).

Hey! You found this booklet interesting? Support Converting Colors with the new Membership Option!

The pro membership hides all ads, plus gives you double the colors in the color bucket, and more awesome pro features!

[Learn more, Memberships starting at \\$2.50/m!](#)

**Follow me
on Twitter!**

@ConvertingColor