

# Converting Colors

HunterLab(84.4399, 3.9757,  
7.4285)

Have a look what the booklet for  
HunterLab(84.4399, 3.9757, 7.4285)  
contains.

<b>HunterLab(84.4387, 3.9740, 7.4296)</b> .....	3
<i><b>Conversions</b></i> .....	4
<i><b>Details</b></i> .....	6
<i><b>Harmonies</b></i> .....	12
<i><b>Previews</b></i> .....	24
<i><b>Color Blindness Simulation</b></i> .....	28
<i><b>CSS Examples</b></i> .....	31

# Color

**HunterLab(84.4387, 3.9740,  
7.4296)**

# Conversions

## Conversions Part 1

Format	Color
Hex	EFD6D6
RGB	239, 214, 214
RGB Percent	94%, 84%, 84%
CMY	0.0627, 0.1608, 0.1608
CMYK	0.00, 0.10, 0.10, 0.06
HSL	0°, 44%, 89%
HSV	0°, 10%, 94%
XYZ	71.7808, 71.2989, 73.5972
YIQ	221.4750, 14.9000, 5.3000

# Conversions

## Conversions Part 2

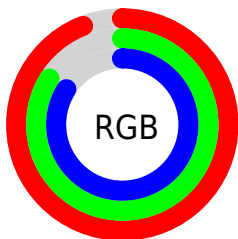
<b>Format</b>	<b>Color</b>
R <sub>Y</sub> B	239, 214, 214
Decimal	15718102
CIE Lab	87.63, 8.65, 3.15
CIE LCh	88, 9.204, 20.030
Yxy	71.3021, 0.3313, 0.3291
Android (android.graphics.Color)	4293908182 (0xFFEFD6D6)
YUV	221.4750, -3.6852, 15.3694
Hunter-Lab	84.4387, 3.9740, 7.4296

# Details

The HunterLab color  $84.4387, 3.9740, 7.4296$  is a light color, and the websafe version is hex `FFCCCC`. A complement of this color would be  $90.6971, -12.7314, 2.2805$ , and the grayscale version is  $85.2515, -4.5488, 4.6319$ .

A 20% lighter version of the original color is  $100.0000, -5.3358, 5.4332$ , and  $61.1284, 4.5276, 5.9318$  is the 20% darker color. If you saturate the color by 10%, you get  $76.7773, 12.8983, 9.8711$ , and if you desaturate by 10%, it is  $92.5258, -4.5730, 5.1492$ .

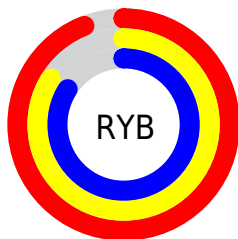
# Distribution



Red (94%)

Green (84%)

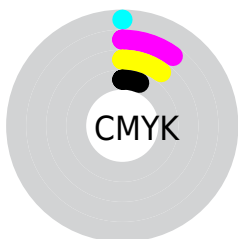
Blue (84%)



Red (94%)

Yellow (84%)

Blue (84%)

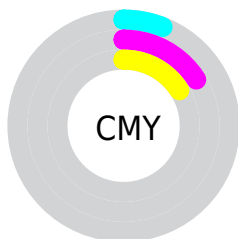


Cyan (0%)

Magenta (10%)

Yellow (10%)

Black (6%)



Cyan (6%)

Magenta (16%)

Yellow (16%)

# Brightness & Saturation Gradients

These gradients show how the HunterLab color 84.4387, 3.9740, 7.4296 changes by changing the brightness by 10 percent. The first figure shows a shift by +10% for each color and the second figure -10%.

Similar to the brightness gradients but the following saturation gradients show a change of the HunterLab color 84.4387, 3.9740, 7.4296 by changing the saturation by 10% instead.



84.4387, 3.9740,  
7.4296

84.4387, 3.9740,  
7.4296

215.6638, -0.0285,  
15.6459

72.5181, 4.2053,  
6.6367

110.0290, 3.3584,  
9.0942

61.2165, 4.3848,  
5.8679

123.6450, 2.9858,  
9.9621

50.5719, 4.5044,  
5.1249

137.7805, 2.5729,  
10.8535

40.6277, 4.5569,  
4.4080

152.4171, 2.1217,  
11.7678

31.4372, 4.5326,  
3.7169

167.5381, 1.6344,  
12.7047

23.0682, 4.4182,  
3.0505

183.1286, 1.1126,

15.6111, 4.1940,

13.6637

2.4057

199.1746, 0.5579,  
14.6442

■ 9.1916, 3.8417,  
1.9219

0.0000, NaN, NaN

■ 84.4387, 3.9740,  
7.4296

■ 84.4387, 3.9740,  
7.4296

■ 76.7773, 12.8983,  
9.8711

■ 92.5258, -4.5730,  
5.1492

■ 69.6144, 22.2107,  
12.4763

■ 98.5347, -10.4711,  
3.6062

■ 63.0504, 31.8448,  
15.2323

■ 57.2056, 41.6124,  
18.0844

■ 52.2180, 51.1281,  
20.9134

■ 48.2288, 59.7624,  
23.5184

■ 45.3492, 66.7082,  
25.6369

■ 43.6100, 71.2502,  
27.0317

■ 42.8390, 73.3579,  
27.6814

# Harmonies

## Analogous

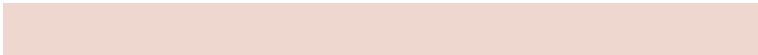
The Analogous color harmony consists of three colors that are next to each other on the color wheel.



84.4406, 4.3896, 3.1249



84.4387, 3.9740, 7.4296



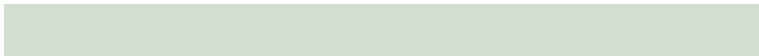
84.4406, 1.2540, 10.8006

# Triad

The Triadic color harmony groups three colors that are evenly spaced from another and form a triangle on the color wheel.



84.4406, 3.9716, 7.4310



84.4406, -11.1899, 9.8305



84.4406, -6.0377, -4.1282

# Complementary

The Complementary color scheme is a pair of colors which are on the opposite of each other on the color wheel.



84.4387, 3.9740, 7.4296



90.6971, -12.7314, 2.2805

# Split Complementary

Split-complementary colors differ from the complementary color scheme. The scheme consists of three colors, the original color and two neighbors of the complement color.



84.4406, -10.1235, -2.1177



84.4387, 3.9740, 7.4296



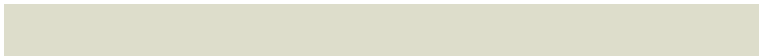
84.4406, -13.0557, 6.0417

# Square

The Square scheme is like the rectangle color scheme, but the four colors are evenly spaced on the color wheel.



84.4406, 3.9716, 7.4310



84.4406, -7.5218, 12.1337



84.4406, -12.6696, 1.6599



84.4406, -1.4556, -3.7070



# Rectangle

The Rectangle color scheme consists of four colors that form a rectangle on the color wheel.



84.4387, 3.9740, 7.4296



84.4406, -1.4645, 12.1364



84.4406, -12.6696, 1.6599



84.4406, -7.5131, -3.7104

# Sweetspot

The Sweet Spot groups the original color and five complimentary colors.



84.4406, 3.9716, 7.4310



97.3312, -2.6138, 6.1534



85.2508, 8.3171, -4.1175



44.7027, -0.8700, 2.9370

0.0000, NaN, NaN



46.2646, -2.4686, 2.5136

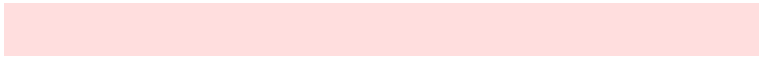


# Same Dimension

The Same Dimension uses a secret algorithm to generate beautiful new colors.



84.4406, 3.9716, 7.4310



88.7083, 6.7186, 8.6605



88.2450, -2.5836, 11.5863



39.6980, 1.4515, 3.3541



31.8460, 54.5319, 20.5780



9.1861, 15.7258, 5.9357

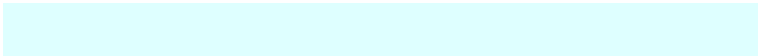


# Inverse Universe

The Inverse Universe completely reimagines the original color for something new.



90.6971, -12.7314, 2.2805



97.0785, -15.6438, 1.7645



86.7146, -6.3293, -2.5131



42.3421, -5.6059, 1.1780



61.2751, -32.4784, -6.4771

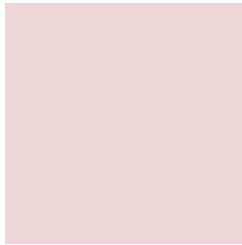


17.6739, -9.3682, -1.8676



# Previews

## White Background



This preview shows how the HunterLab color 84.4387, 3.9740, 7.4296 looks on a white background.

## Color Contrast Check

Large Text (above 18pt) WCAG AA × Fail

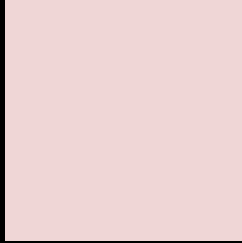
Any Text WCAG AA × Fail

Large Text (above 18pt) WCAG AAA × Fail

Any Text WCAG AAA × Fail



# Black Background



This preview shows how the HunterLab color 84.4387, 3.9740, 7.4296 looks on a black background.

## Color Contrast Check

Large Text (above 18pt) WCAG AA ✓ Pass

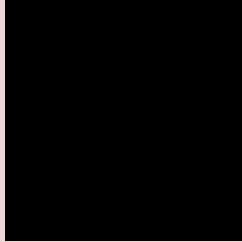
Any Text WCAG AA ✓ Pass

Large Text (above 18pt) WCAG AAA ✓ Pass

Any Text WCAG AAA ✓ Pass

If you want to check with other color combinations, try the [Color Contrast Checker](#).

## HunterLab 84.4387, 3.9740, 7.4296 Background



This preview shows how black text looks on a background with the HunterLab color 84.4387, 3.9740, 7.4296.



This preview shows how white text looks on a background with the HunterLab color 84.4387, 3.9740,

7.4296.

# Color Blindness Simulation

Color vision deficiency is a very complex topic, and I could not describe the different causes any better than Wikipedia does, so if you want to learn more, you should check out their [article about color blindness](#).

## Dichromacy



### Original Color

84.4387, 3.9740, 7.4296

### Protanopia

84.5695, -3.2111, 6.0323

### Deuteranopia

84.5566, 5.9060, 7.5984



## Tritanopia

84.4921, 8.0983, 0.6999

# Trichromacy



## Original Color

84.4387, 3.9740, 7.4296

## Protanomaly

84.4047, -0.6854, 6.3627

## Deuteranomaly

84.4516, 5.5535, 7.4721

## Tritanomaly

84.5231, 6.3525, 3.2232

# Monochromacy



## Original Color

84.4387, 3.9740, 7.4296

## Achromatopsia

85.0326, -4.5371, 4.6200

## Achromatomaly

84.6751, -1.2051, 5.7109

# CSS Examples

## Text

The CSS property to change the color of the text to HunterLab 84.4387, 3.9740, 7.4296 is called "color". The color property can be set on classes, ids or directly on the HTML element.

This example shows how text in the color `rgb(239, 214, 214)` looks like.

```
.text, #text, p{  
  color:rgb(239, 214, 214)  
}
```

If you want to add a text shadow in that color use the text-shadow property, you can generate a text shadow directly with our [CSS Text Shadow Generator](#).

Here you see how black text with a 4 pixel rgb(239, 214, 214) colored shadow looks like.

```
.shadow{ text-shadow: 4px 4px 2px rgb(239, 214, 214) }
```

## Border

The CSS property to change the border of an element to HunterLab 84.4387, 3.9740, 7.4296 is called "border".

The border property can be set on classes, ids or directly on the HTML element.

This example shows the color as border, it can be applied via the CSS property "border" or "border-color".

```
.border, #border, table{ border:4px solid rgb(239, 214, 214) }
```



If only the border color should be changed use the property `border-color`.

```
.border{ border-color:rgb(239, 214, 214) }
```

If you want to add a box shadow in that color use:

Here you see how a box with a 4 pixel `rgb(239, 214, 214)` colored shadow looks like.

```
.boxshadow{ -moz-box-shadow:4px 4px 4px  
4px rgb(239, 214, 214); -webkit-box-  
shadow:4px 4px 4px 4px rgb(239, 214, 214);  
box-shadow:4px 4px 4px 4px rgb(239, 214,  
214) }
```

# Background

The CSS property to change the background color of an element to HunterLab 84.4387, 3.9740, 7.4296 is called "background". The background property can be set on classes, ids or directly on the HTML element.

```
.background, #background, body{  
background: rgb(239, 214, 214) }
```

If only the background color should be changed can be used:

```
.background{ background-color: rgb(239,  
214, 214) }
```

This example shows the color as background, it is applied via the CSS property "background".

To optimize and compress your CSS code, you can use our [online CSS compressor and optimizer](#) based on csstidy. If you want to create a linear or radial gradient as background or border, check our [CSS Gradient Generator](#).

Hey! You found this booklet interesting? Support Converting Colors with the new Membership Option!

The pro membership hides all ads, plus gives you double the colors in the color bucket, and more awesome pro features!

**[Learn more, Memberships starting at \\$2.50/m!](#)**

**Follow me  
on Twitter!**

@ConvertingColor