

Converting Colors

HunterLab(84.4423, 2.2738,
13.1370)

Have a look what the booklet for
HunterLab(84.4423, 2.2738,
13.1370) contains.

HunterLab(84.5687, 2.1156, 13.4070)	3
<i>Conversions</i>	4
<i>Details</i>	6
<i>Harmonies</i>	12
<i>Previews</i>	24
<i>Color Blindness Simulation</i>	28
<i>CSS Examples</i>	31

Color

**HunterLab(84.5687, 2.1156,
13.4070)**

Conversions

Conversions Part 1

Format	Color
Hex	F1D7C9
RGB	241, 215, 201
RGB Percent	95%, 84%, 79%
CMY	0.0549, 0.1568, 0.2118
CMYK	0.00, 0.11, 0.17, 0.05
HSL	21°, 59%, 87%
HSV	21°, 17%, 95%
XYZ	71.1186, 71.5187, 65.3144
YIQ	221.1780, 19.9900, 1.1580

Conversions

Conversions Part 2

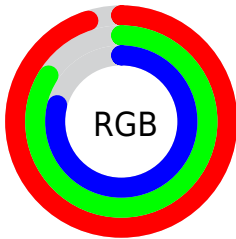
Format	Color
R _Y B	241, 223, 201
Decimal	15849417
CIE Lab	87.74, 6.78, 10.18
CIE LCh	88, 12.237, 56.331
Yxy	71.5219, 0.3420, 0.3439
Android (android.graphics.Color)	4294039497 (0xFFFF1D7C9)
YUV	221.1780, -9.9478, 17.3839
Hunter-Lab	84.5687, 2.1156, 13.4070

Details

The HunterLab color $84.5687, 2.1156, 13.4070$ is a light color, and the websafe version is hex `FFCCCC`. A complement of this color would be $85.8515, -10.0350, -4.7467$, and the grayscale version is $85.1472, -4.5432, 4.6262$.

A 20% lighter version of the original color is $100.0000, -5.3358, 5.4332$, and $61.2882, 2.9675, 11.1137$ is the 20% darker color. If you saturate the color by 10%, you get $79.2946, 6.8904, 17.9188$, and if you desaturate by 10%, it is $90.0605, -2.2894, 8.5109$.

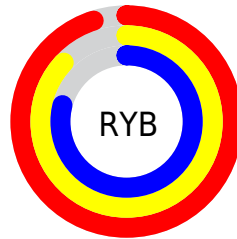
Distribution



Red (95%)

Green (84%)

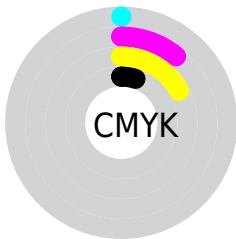
Blue (79%)



Red (95%)

Yellow (87%)

Blue (79%)

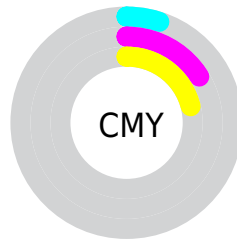


Cyan (0%)

Magenta (11%)

Yellow (17%)

Black (5%)



Cyan (5%)

Magenta (16%)

Yellow (21%)

Brightness & Saturation Gradients

These gradients show how the HunterLab color 84.5687, 2.1156, 13.4070 changes by changing the brightness by 10 percent. The first figure shows a shift by +10% for each color and the second figure -10%.

Similar to the brightness gradients but the following saturation gradients show a change of the HunterLab color 84.5687, 2.1156, 13.4070 by changing the saturation by 10% instead.

84.5687, 2.1156,
13.4070

84.5687, 2.1156,
13.4070

215.8415, -2.5312,
24.1088

72.6417, 2.4327,
12.2721

110.1710, 1.3390,
15.7036

61.3333, 2.7024,
11.1402

123.7927, 0.8906,
16.8663

50.6815, 2.9172,
10.0083

137.9336, 0.4044,
18.0407

40.7296, 3.0709,
8.8705

152.5754, -0.1176,
19.2274

31.5308, 3.1551,
7.7177

167.7015, -0.6735,
20.4272

23.1526, 3.1582,
6.5348

183.2968, -1.2620,

15.6852, 3.0629,

21.6405

5.2954

199.3477, -1.8816,
22.8676

■ 9.2555, 2.8476,
5.0648

0.0000, NaN, NaN

■ 84.5687, 2.1156,
13.4070

■ 84.5687, 2.1156,
13.4070

■ 79.2946, 6.8904,
17.9188

■ 90.0605, -2.2894,
8.5109

■ 74.2583, 12.0715,
21.9753

■ 95.7422, -6.3497,
3.2823

■ 69.4911, 17.6758,
25.4982

■ 98.7122, -9.8451,
3.8289

■ 65.0269, 23.7046,
28.3965

■ 60.9032, 30.1293,
30.5725

■ 57.1602, 36.8758,
31.9331

■ 53.8381, 43.8073,
32.4131

■ 50.9725, 50.7069,
32.0228

■ 50.1002, 52.9705,
31.7989

Harmonies

Analogous

The Analogous color harmony consists of three colors that are next to each other on the color wheel.



84.5706, 6.3013, 9.4244



84.5687, 2.1156, 13.4070



84.5706, -3.7619, 15.0398

Triad

The Triadic color harmony groups three colors that are evenly spaced from another and form a triangle on the color wheel.



84.5706, 2.1130, 13.4083



84.5706, -15.9542, 5.3173



84.5706, 0.7715, -6.0678

Complementary

The Complementary color scheme is a pair of colors which are on the opposite of each other on the color wheel.



84.5687, 2.1156, 13.4070



85.8515, -10.0350, -4.7467

Split Complementary

Split-complementary colors differ from the complementary color scheme. The scheme consists of three colors, the original color and two neighbors of the complement color.



84.5706, -5.2695, -7.3600



84.5687, 2.1156, 13.4070



84.5706, -14.8175, -0.5192

Square

The Square scheme is like the rectangle color scheme, but the four colors are evenly spaced on the color wheel.



84.5706, 2.1130, 13.4083



84.5706, -14.0989, 10.5830



84.5706, -10.9489, -5.2635



84.5706, 5.5115, -1.8474

Rectangle

The Rectangle color scheme consists of four colors that form a rectangle on the color wheel.



84.5687, 2.1156, 13.4070



84.5706, -7.8038, 14.6662



84.5706, -10.9489, -5.2635



84.5706, -1.1792, -6.8714

Sweetspot

The Sweet Spot groups the original color and five complimentary colors.



84.5706, 2.1130, 13.4083



96.9704, -3.1492, 8.2148



81.2533, 13.8437, -2.7193



44.6678, -1.3115, 3.9783

0.0000, NaN, NaN



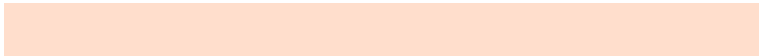
46.2646, -2.4686, 2.5136

Same Dimension

The Same Dimension uses a secret algorithm to generate beautiful new colors.



84.5706, 2.1130, 13.4083



88.1962, 3.9702, 16.0120



90.7387, -8.2494, 19.6611



40.8216, -0.4890, 4.5942



37.2016, 38.1578, 23.5914



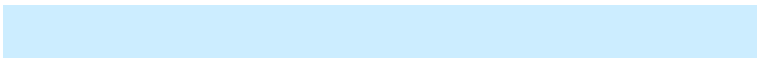
11.5386, 8.8963, 7.2658

Inverse Universe

The Inverse Universe completely reimagines the original color for something new.



85.8515, -10.0350, -4.7467



89.8383, -11.6213, -7.2831



79.6210, 0.2832, -12.9027



41.1622, -3.7140, -0.2273



40.8824, -4.9829, -40.3428



12.5547, -2.6187, -10.0392

Previews

White Background



This preview shows how the HunterLab color 84.5687, 2.1156, 13.4070 looks on a white background.

Color Contrast Check

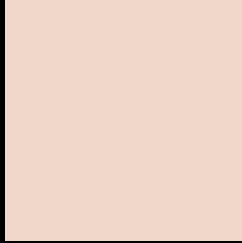
Large Text (above 18pt) WCAG AA × Fail

Any Text WCAG AA × Fail

Large Text (above 18pt) WCAG AAA × Fail

Any Text WCAG AAA × Fail

Black Background



This preview shows how the HunterLab color 84.5687, 2.1156, 13.4070 looks on a black background.

Color Contrast Check

Large Text (above 18pt) WCAG AA ✓ Pass

Any Text WCAG AA ✓ Pass

Large Text (above 18pt) WCAG AAA ✓ Pass

Any Text WCAG AAA ✓ Pass

If you want to check with other color combinations, try the [Color Contrast Checker](#).

HunterLab 84.5687, 2.1156, 13.4070 Background



This preview shows how black text looks on a background with the HunterLab color 84.5687, 2.1156, 13.4070.



This preview shows how white text looks on a background with the HunterLab color 84.5687, 2.1156,

Color Blindness Simulation

Color vision deficiency is a very complex topic, and I could not describe the different causes any better than Wikipedia does, so if you want to learn more, you should check out their [article about color blindness](#).

Dichromacy



Original Color

84.5687, 2.1156, 13.4070

Protanopia

84.5392, -4.1417, 12.3950

Deuteranopia

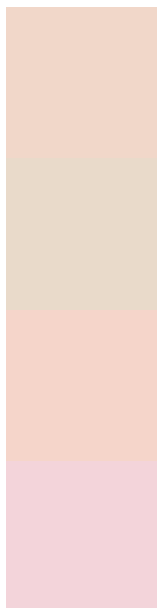
84.4439, 6.3543, 12.9126



Tritanopia

84.5122, 9.6809, 0.7521

Trichromacy



Original Color

84.5687, 2.1156, 13.4070

Protanomaly

84.6940, -2.0820, 13.0348

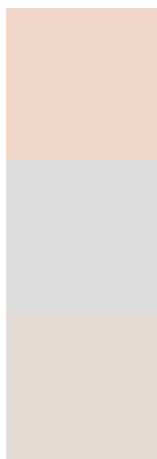
Deuteranomaly

84.4187, 4.7432, 12.8572

Tritanomaly

84.3822, 7.0930, 5.5145

Monochromacy



Original Color

84.5687, 2.1156, 13.4070

Achromatopsia

85.0326, -4.5371, 4.6200

Achromatomaly

84.8599, -2.3896, 7.7995

CSS Examples

Text

The CSS property to change the color of the text to HunterLab 84.5687, 2.1156, 13.4070 is called "color". The color property can be set on classes, ids or directly on the HTML element.

This example shows how text in the color `rgb(241, 215, 201)` looks like.

```
.text, #text, p{  
    color:rgb(241, 215, 201)  
}
```

If you want to add a text shadow in that color use the text-shadow property, you can generate a text shadow directly with our [CSS Text Shadow Generator](#).

Here you see how black text with a 4 pixel rgb(241, 215, 201) colored shadow looks like.

```
.shadow{ text-shadow: 4px 4px 2px rgb(241, 215, 201) }
```

Border

The CSS property to change the border of an element to HunterLab 84.5687, 2.1156, 13.4070 is called "border". The border property can be set on classes, ids or directly on the HTML element.

This example shows the color as border, it can be applied via the CSS property "border" or "border-color".

```
.border, #border, table{ border:4px solid rgb(241, 215, 201) }
```


If only the border color should be changed use the property border-color.

```
.border{ border-color:rgb(241, 215, 201) }
```

If you want to add a box shadow in that color use:

Here you see how a box with a 4 pixel rgb(241, 215, 201) colored shadow looks like.

```
.boxshadow{ -moz-box-shadow:4px 4px 4px  
4px rgb(241, 215, 201); -webkit-box-  
shadow:4px 4px 4px 4px rgb(241, 215, 201);  
box-shadow:4px 4px 4px 4px rgb(241, 215,  
201) }
```

Background

The CSS property to change the background color of an element to HunterLab 84.5687, 2.1156, 13.4070 is called "background". The background property can be set on classes, ids or directly on the HTML element.

```
.background, #background, body{  
background: rgb(241, 215, 201) }
```

If only the background color should be changed can be used:

```
.background{ background-color: rgb(241,  
215, 201) }
```

This example shows the color as background, it is applied via the CSS property "background".

To optimize and compress your CSS code, you can use our [online CSS compressor and optimizer](#) based on csstidy. If you want to create a linear or radial gradient as background or border, check our [CSS Gradient Generator](#).

Hey! You found this booklet interesting? Support Converting Colors with the new Membership Option!

The pro membership hides all ads, plus gives you double the colors in the color bucket, and more awesome pro features!

[Learn more, Memberships starting at \\$2.50/m!](#)

**Follow me
on Twitter!**

@ConvertingColor