

Converting Colors

HunterLab(84.4964, 3.6574,
5.8505)

Have a look what the booklet for
HunterLab(84.4964, 3.6574, 5.8505)
contains.

HunterLab(84.3252, 3.7740, 5.8707)	3
<i>Conversions</i>	4
<i>Details</i>	6
<i>Harmonies</i>	12
<i>Previews</i>	24
<i>Color Blindness Simulation</i>	28
<i>CSS Examples</i>	31

Color

**HunterLab(84.3252, 3.7740,
5.8707)**

Conversions

Conversions Part 1

Format	Color
Hex	EDD6D9
RGB	237, 214, 217
RGB Percent	93%, 84%, 85%
CMY	0.0706, 0.1608, 0.1490
CMYK	0.00, 0.10, 0.08, 0.07
HSL	352°, 39%, 88%
HSV	352°, 10%, 93%
XYZ	71.4960, 71.1074, 75.6025
YIQ	221.2190, 12.7450, 5.8090

Conversions

Conversions Part 2

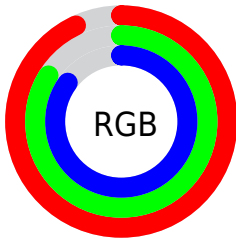
Format	Color
R _Y B	237, 214, 217
Decimal	15587033
CIE Lab	87.54, 8.44, 1.41
CIE LCh	88, 8.562, 9.495
Yxy	71.1105, 0.3277, 0.3259
Android (android.graphics.Color)	4293777113 (0xFFEDD6D9)
YUV	221.2190, -2.0800, 13.8399
Hunter-Lab	84.3252, 3.7740, 5.8707

Details

The HunterLab color $84.3252, 3.7740, 5.8707$ is a light color, and the websafe version is hex `CCCCCC`. A complement of this color would be $89.8926, -12.6145, 3.8262$, and the grayscale version is $85.1342, -4.5425, 4.6255$.

A 20% lighter version of the original color is $100.0000, -5.3358, 5.4332$, and $61.0153, 4.3212, 4.4571$ is the 20% darker color. If you saturate the color by 10%, you get $76.7902, 13.0223, 7.0435$, and if you desaturate by 10%, it is $92.2675, -5.1719, 4.9769$.

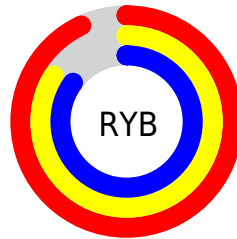
Distribution



Red (93%)

Green (84%)

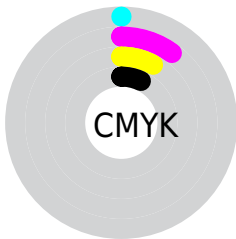
Blue (85%)



Red (93%)

Yellow (84%)

Blue (85%)

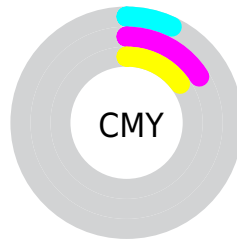


Cyan (0%)

Magenta (10%)

Yellow (8%)

Black (7%)



Cyan (7%)

Magenta (16%)

Yellow (15%)

Brightness & Saturation Gradients

These gradients show how the HunterLab color 84.3252, 3.7740, 5.8707 changes by changing the brightness by 10 percent. The first figure shows a shift by +10% for each color and the second figure -10%.

Similar to the brightness gradients but the following saturation gradients show a change of the HunterLab color 84.3252, 3.7740, 5.8707 by changing the saturation by 10% instead.

84.3252, 3.7740,
5.8707

84.3252, 3.7740,
5.8707

215.5086, -0.2947,
13.4899

72.4102, 4.0142,
5.1589

109.9050, 3.1420,
7.3845

61.1145, 4.2028,
4.4759

123.5161, 2.7616,
8.1818

50.4762, 4.3321,
3.8244

137.6469, 2.3411,
9.0052

40.5387, 4.3947,
3.2059

152.2789, 1.8827,
9.8541

31.3556, 4.3813,
2.6218

167.3955, 1.3883,
10.7276

22.9946, 4.2785,
2.0739

182.9816, 0.8596,

15.5465, 4.0669,

11.6252

1.5638

199.0235, 0.2982,
12.5461

■ 9.1355, 3.7359,
1.1381

0.0000, NaN, NaN

■ 84.3252, 3.7740,
5.8707

■ 84.3252, 3.7740,
5.8707

■ 76.7902, 13.0223,
7.0435

■ 92.2675, -5.1719,
4.9769

■ 69.7306, 22.5682,
8.5369

■ 98.3589, -11.0925,
3.3853

■ 63.2402, 32.3319,
10.3933

■ 57.4316, 42.1177,
12.6336

■ 52.4347, 51.5478,
15.2321

■ 48.3843, 60.0204,
18.0817

■ 45.3921, 66.7696,
20.9709

■ 43.5013, 71.1106,
23.6059

■ 42.5694, 73.0476,
25.6570

Harmonies

Analogous

The Analogous color harmony consists of three colors that are next to each other on the color wheel.



84.3271, 3.3476, 1.8002



84.3252, 3.7740, 5.8707



84.3271, 1.9444, 9.4214

Triad

The Triadic color harmony groups three colors that are evenly spaced from another and form a triangle on the color wheel.



84.3271, 3.7717, 5.8721



84.3271, -9.6772, 10.4135



84.3271, -7.3688, -3.0807

Complementary

The Complementary color scheme is a pair of colors which are on the opposite of each other on the color wheel.



84.3252, 3.7740, 5.8707



89.8926, -12.6145, 3.8262

Split Complementary

Split-complementary colors differ from the complementary color scheme. The scheme consists of three colors, the original color and two neighbors of the complement color.



84.3271, -10.7642, -0.5450



84.3252, 3.7740, 5.8707



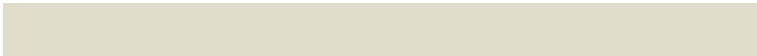
84.3271, -12.0784, 7.2879

Square

The Square scheme is like the rectangle color scheme, but the four colors are evenly spaced on the color wheel.



84.3271, 3.7717, 5.8721



84.3271, -5.8580, 11.9558



84.3271, -12.4723, 3.2878



84.3271, -3.1414, -3.5063

Rectangle

The Rectangle color scheme consists of four colors that form a rectangle on the color wheel.



84.3252, 3.7740, 5.8707



84.3271, -0.2836, 11.0636



84.3271, -12.4723, 3.2878



84.3271, -8.6430, -2.4411

Sweetspot

The Sweet Spot groups the original color and five complimentary colors.



84.3271, 3.7717, 5.8721



97.3625, -2.4400, 5.6998



84.6711, 6.2368, -3.8212



44.7210, -0.7685, 2.6718

0.0000, NaN, NaN



46.2646, -2.4686, 2.5136

Same Dimension

The Same Dimension uses a secret algorithm to generate beautiful new colors.



84.3271, 3.7717, 5.8721



89.6713, 6.4252, 6.6506



86.7959, -1.1449, 10.0031



38.8407, 1.6322, 2.6873



31.4548, 54.0715, 18.7422



8.8722, 15.3663, 4.3973

Inverse Universe

The Inverse Universe completely reimagines the original color for something new.



84.3271, 3.7717, 5.8721



89.6713, 6.4252, 6.6506



87.2996, -7.7658, -0.7575



38.8407, 1.6322, 2.6873



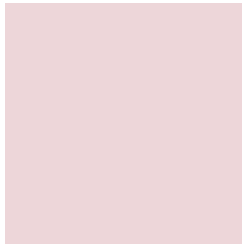
31.4548, 54.0715, 18.7422



8.8722, 15.3663, 4.3973

Previews

White Background



This preview shows how the HunterLab color 84.3252, 3.7740, 5.8707 looks on a white background.

Color Contrast Check

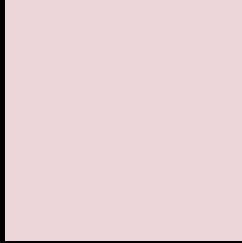
Large Text (above 18pt) WCAG AA × Fail

Any Text WCAG AA × Fail

Large Text (above 18pt) WCAG AAA × Fail

Any Text WCAG AAA × Fail

Black Background



This preview shows how the HunterLab color 84.3252, 3.7740, 5.8707 looks on a black background.

Color Contrast Check

Large Text (above 18pt) WCAG AA ✓ Pass

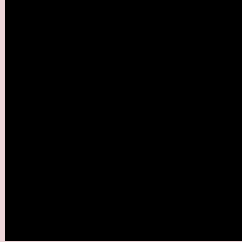
Any Text WCAG AA ✓ Pass

Large Text (above 18pt) WCAG AAA ✓ Pass

Any Text WCAG AAA ✓ Pass

If you want to check with other color combinations, try the [Color Contrast Checker](#).

HunterLab 84.3252, 3.7740, 5.8707 Background



This preview shows how black text looks on a background with the HunterLab color 84.3252, 3.7740, 5.8707.



This preview shows how white text looks on a background with the HunterLab color 84.3252, 3.7740,

Color Blindness Simulation

Color vision deficiency is a very complex topic, and I could not describe the different causes any better than Wikipedia does, so if you want to learn more, you should check out their [article about color blindness](#).

Dichromacy



Original Color

84.3252, 3.7740, 5.8707

Protanopia

84.2604, -2.5101, 4.2325

Deuteranopia

84.1412, 6.2247, 5.6993



Tritanopia

84.3178, 7.5833, -0.0364

Trichromacy



Original Color

84.3252, 3.7740, 5.8707

Protanomaly

84.4003, -0.5149, 4.9190

Deuteranomaly

84.3348, 5.3441, 5.9093

Tritanomaly

84.3812, 6.0056, 2.0481

Monochromacy



Original Color

84.3252, 3.7740, 5.8707

Achromatopsia

85.0326, -4.5371, 4.6200

Achromatomaly

84.6410, -1.1980, 4.7043

CSS Examples

Text

The CSS property to change the color of the text to HunterLab 84.3252, 3.7740, 5.8707 is called "color". The color property can be set on classes, ids or directly on the HTML element.

This example shows how text in the color `rgb(237, 214, 217)` looks like.

```
.text, #text, p{  
    color:rgb(237, 214, 217)  
}
```

If you want to add a text shadow in that color use the text-shadow property, you can generate a text shadow directly with our [CSS Text Shadow Generator](#).

Here you see how black text with a 4 pixel rgb(237, 214, 217) colored shadow looks like.

```
.shadow{ text-shadow: 4px 4px 2px rgb(237, 214, 217) }
```

Border

The CSS property to change the border of an element to HunterLab 84.3252, 3.7740, 5.8707 is called "border". The border property can be set on classes, ids or directly on the HTML element.

This example shows the color as border, it can be applied via the CSS property "border" or "border-color".

```
.border, #border, table{ border:4px solid rgb(237, 214, 217) }
```


If only the border color should be changed use the property `border-color`.

```
.border{ border-color:rgb(237, 214, 217) }
```

If you want to add a box shadow in that color use:

Here you see how a box with a 4 pixel `rgb(237, 214, 217)` colored shadow looks like.

```
.boxshadow{ -moz-box-shadow:4px 4px 4px  
4px rgb(237, 214, 217); -webkit-box-  
shadow:4px 4px 4px 4px rgb(237, 214, 217);  
box-shadow:4px 4px 4px 4px rgb(237, 214,  
217) }
```

Background

The CSS property to change the background color of an element to HunterLab 84.3252, 3.7740, 5.8707 is called "background". The background property can be set on classes, ids or directly on the HTML element.

```
.background, #background, body{  
background: rgb(237, 214, 217) }
```

If only the background color should be changed can be used:

```
.background{ background-color: rgb(237,  
214, 217) }
```

This example shows the color as background, it is applied via the CSS property "background".

To optimize and compress your CSS code, you can use our [online CSS compressor and optimizer](#) based on csstidy. If you want to create a linear or radial gradient as background or border, check our [CSS Gradient Generator](#).

Hey! You found this booklet interesting? Support Converting Colors with the new Membership Option!

The pro membership hides all ads, plus gives you double the colors in the color bucket, and more awesome pro features!

[Learn more, Memberships starting at \\$2.50/m!](#)

**Follow me
on Twitter!**

@ConvertingColor