

Converting Colors

HunterLab(84.5068, 3.2338,
3.1504)

Have a look what the booklet for
HunterLab(84.5068, 3.2338, 3.1504)
contains.

| | |
|---|----|
| HunterLab(84.5110, 3.2333, 3.1541) | 3 |
| <i>Conversions</i> | 4 |
| <i>Details</i> | 6 |
| <i>Harmonies</i> | 12 |
| <i>Previews</i> | 24 |
| <i>Color Blindness Simulation</i> | 28 |
| <i>CSS Examples</i> | 31 |

Color

**HunterLab(84.5110, 3.2333,
3.1541)**

Conversions

Conversions Part 1

| Format | Color |
|---------------|---------------------------|
| Hex | EAD7DF |
| RGB | 234, 215, 223 |
| RGB Percent | 92%, 84%, 87% |
| CMY | 0.0823, 0.1568, 0.1255 |
| CMYK | 0.00, 0.08, 0.05, 0.08 |
| HSL | 335°, 31%, 88% |
| HSV | 335°, 8%, 92% |
| XYZ | 71.5515, 71.4211, 79.8266 |
| YIQ | 221.5930, 8.7560, 6.5160 |

Conversions

Conversions Part 2

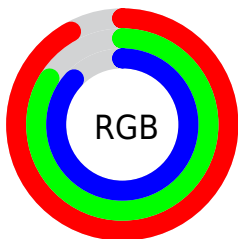
| Format | Color |
|-------------------------------------|------------------------------|
| R_YB | 234, 215, 223 |
| Decimal | 15390687 |
| CIE Lab | 87.69, 7.91, -1.56 |
| CIE LCh | 88, 8.060, 348.809 |
| Yxy | 71.4242, 0.3211, 0.3206 |
| Android (android.graphics.Color) | 4293580767 (0xFFEAD7DF) |
| YUV | 221.5930, 0.6937, 10.8809 |
| Hunter-Lab | 84.5110, 3.2333, 3.1541 |

Details

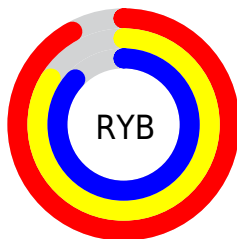
The HunterLab color $84.5110, 3.2333, 3.1541$ is a light color, and the websafe version is hex `CCCCCC`. A complement of this color would be $88.7613, -12.1936, 6.4167$, and the grayscale version is $85.2862, -4.5507, 4.6338$.

A 20% lighter version of the original color is $100.0000, -5.3358, 5.4332$, and $61.1831, 3.7899, 1.8676$ is the 20% darker color. If you saturate the color by 10%, you get $77.2300, 13.3699, 1.2883$, and if you desaturate by 10%, it is $92.1773, -6.6904, 5.3676$.

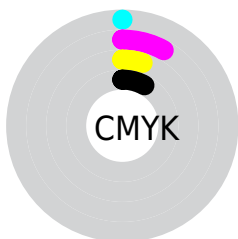
Distribution



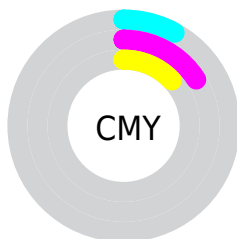
- Red (92%)
- Green (84%)
- Blue (87%)



- Red (92%)
- Yellow (84%)
- Blue (87%)



- Cyan (0%)
- Magenta (8%)
- Yellow (5%)
- Black (8%)



- Cyan (8%)
- Magenta (16%)
- Yellow (13%)

Brightness & Saturation Gradients

These gradients show how the HunterLab color 84.5110, 3.2333, 3.1541 changes by changing the brightness by 10 percent. The first figure shows a shift by +10% for each color and the second figure -10%.

Similar to the brightness gradients but the following saturation gradients show a change of the HunterLab color 84.5110, 3.2333, 3.1541 by changing the saturation by 10% instead.

84.5110, 3.2333,
3.1541

84.5110, 3.2333,
3.1541

215.7626, -1.0250,
9.7780

72.5868, 3.4989,
2.5765

110.1079, 2.5540,
4.4178

61.2814, 3.7143,
2.0351

123.7271, 2.1513,
5.0975

50.6328, 3.8717,
1.5338

137.8656, 1.7092,
5.8078

40.6843, 3.9643,
1.0761

152.5051, 1.2299,
6.5474

31.4892, 3.9830,
0.6660

167.6289, 0.7153,
7.3151

23.1151, 3.9152,
0.3091

183.2221, 0.1670,

15.6523, 3.7420,

8.1100

0.0135

199.2708, -0.4135,
8.9312

9.2272, 3.4424,
-0.2121

0.0000, NaN, NaN

84.5110, 3.2333,
3.1541

84.5110, 3.2333,
3.1541

77.2300, 13.3699,
1.2883

92.1773, -6.6904,
5.3676

70.3952, 23.6886,
-0.1443

97.9394, -12.8981,
5.3216

64.0905, 34.0819,
-1.0284

98.0982, -12.0159,
3.0570

58.4150, 44.3309,
-1.2278

■ 53.4826, 54.0503,
-0.5980

■ 49.4119, 62.6582,
0.9784

■ 46.3041, 69.4308,
3.5320

■ 44.2070, 73.7104,
6.9383

■ 43.0451, 75.3303,
10.8670

Harmonies

Analogous

The Analogous color harmony consists of three colors that are next to each other on the color wheel.



84.5128, 1.4030, -0.4051



84.5110, 3.2333, 3.1541



84.5128, 2.9550, 6.9450

Triad

The Triadic color harmony groups three colors that are evenly spaced from another and form a triangle on the color wheel.



84.5128, 3.2311, 3.1555



84.5128, -7.0004, 11.2915



84.5128, -9.5621, -1.1431

Complementary

The Complementary color scheme is a pair of colors which are on the opposite of each other on the color wheel.



84.5110, 3.2333, 3.1541



88.7613, -12.1936, 6.4167

Split Complementary

Split-complementary colors differ from the complementary color scheme. The scheme consists of three colors, the original color and two neighbors of the complement color.



84.5128, -11.7321, 2.1864



84.5110, 3.2333, 3.1541



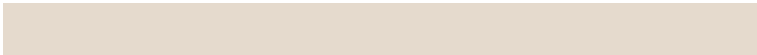
84.5128, -10.2724, 9.3171

Square

The Square scheme is like the rectangle color scheme, but the four colors are evenly spaced on the color wheel.



84.5128, 3.2311, 3.1555



84.5128, -3.0031, 11.5236



84.5128, -11.9897, 6.0199



84.5128, -6.0142, -2.9634

Rectangle

The Rectangle color scheme consists of four colors that form a rectangle on the color wheel.



84.5110, 3.2333, 3.1541



84.5128, 1.6161, 9.0955



84.5128, -11.9897, 6.0199



84.5128, -10.4740, -0.1563

Sweetspot

The Sweet Spot groups the original color and five complimentary colors.



84.5128, 3.2311, 3.1555



98.2855, -3.1484, 4.9286



84.0690, 2.4527, -3.0532



45.5105, -1.5068, 2.2916

0.0000, NaN, NaN



46.2646, -2.4686, 2.5136

Same Dimension

The Same Dimension uses a secret algorithm to generate beautiful new colors.



84.5128, 3.2311, 3.1555



91.5865, 5.7000, 3.0494



84.6466, 1.2203, 7.1462



38.9349, 2.1387, 1.3436



32.1785, 56.7373, 8.1524



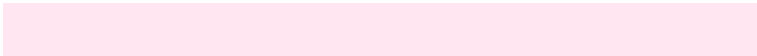
9.1209, 16.2781, 0.7913

Inverse Universe

The Inverse Universe completely reimagines the original color for something new.



84.5128, 3.2311, 3.1555



91.5865, 5.7000, 3.0494



88.6095, -10.1437, 2.3372



38.9349, 2.1387, 1.3436



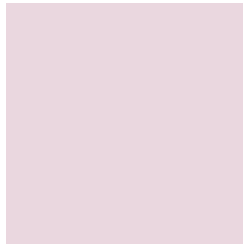
32.1785, 56.7373, 8.1524



9.1209, 16.2781, 0.7913

Previews

White Background



This preview shows how the HunterLab color 84.5110, 3.2333, 3.1541 looks on a white background.

Color Contrast Check

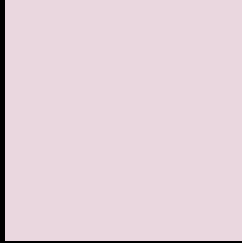
Large Text (above 18pt) WCAG AA × Fail

Any Text WCAG AA × Fail

Large Text (above 18pt) WCAG AAA × Fail

Any Text WCAG AAA × Fail

Black Background



This preview shows how the HunterLab color 84.5110, 3.2333, 3.1541 looks on a black background.

Color Contrast Check

Large Text (above 18pt) WCAG AA ✓ Pass

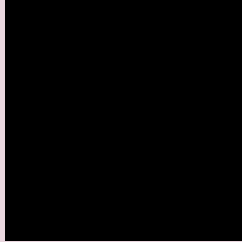
Any Text WCAG AA ✓ Pass

Large Text (above 18pt) WCAG AAA ✓ Pass

Any Text WCAG AAA ✓ Pass

If you want to check with other color combinations, try the [Color Contrast Checker](#).

HunterLab 84.5110, 3.2333, 3.1541 Background



This preview shows how black text looks on a background with the HunterLab color 84.5110, 3.2333, 3.1541.



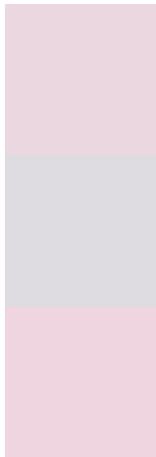
This preview shows how white text looks on a background with the HunterLab color 84.5110, 3.2333,

3.1541.

Color Blindness Simulation

Color vision deficiency is a very complex topic, and I could not describe the different causes any better than Wikipedia does, so if you want to learn more, you should check out their [article about color blindness](#).

Dichromacy



Original Color

84.5110, 3.2333, 3.1541

Protanopia

84.6338, -2.4846, 2.2046

Deuteranopia

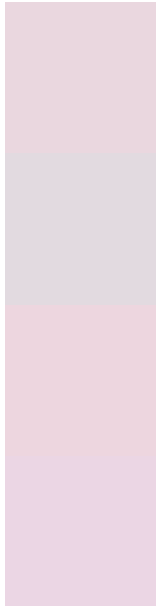
84.4197, 6.0062, 3.0935



Tritanopia

84.5724, 5.5065, -0.7913

Trichromacy



Original Color

84.5110, 3.2333, 3.1541

Protanomaly

84.6719, -0.8383, 2.7787

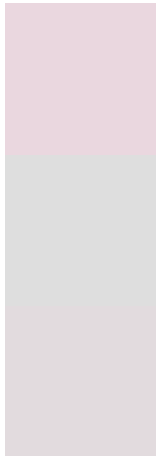
Deuteranomaly

84.5135, 4.7860, 3.1844

Tritanomaly

84.4729, 4.9732, 0.6216

Monochromacy



Original Color

84.5110, 3.2333, 3.1541

Achromatopsia

85.4670, -4.5603, 4.6436

Achromatomaly

84.9151, -1.7059, 4.0419

CSS Examples

Text

The CSS property to change the color of the text to HunterLab 84.5110, 3.2333, 3.1541 is called "color". The color property can be set on classes, ids or directly on the HTML element.

This example shows how text in the color `rgb(234, 215, 223)` looks like.

```
.text, #text, p{  
    color:rgb(234, 215, 223)  
}
```

If you want to add a text shadow in that color use the text-shadow property, you can generate a text shadow directly with our [CSS Text Shadow Generator](#).

Here you see how black text with a 4 pixel rgb(234, 215, 223) colored shadow looks like.

```
.shadow{ text-shadow: 4px 4px 2px rgb(234, 215, 223) }
```

Border

The CSS property to change the border of an element to HunterLab 84.5110, 3.2333, 3.1541 is called "border".

The border property can be set on classes, ids or directly on the HTML element.

This example shows the color as border, it can be applied via the CSS property "border" or "border-color".

```
.border, #border, table{ border:4px solid rgb(234, 215, 223) }
```


If only the border color should be changed use the property `border-color`.

```
.border{ border-color:rgb(234, 215, 223) }
```

If you want to add a box shadow in that color use:

Here you see how a box with a 4 pixel `rgb(234, 215, 223)` colored shadow looks like.

```
.boxshadow{ -moz-box-shadow:4px 4px 4px  
4px rgb(234, 215, 223); -webkit-box-  
shadow:4px 4px 4px 4px rgb(234, 215, 223);  
box-shadow:4px 4px 4px 4px rgb(234, 215,  
223) }
```

Background

The CSS property to change the background color of an element to HunterLab 84.5110, 3.2333, 3.1541 is called "background". The background property can be set on classes, ids or directly on the HTML element.

```
.background, #background, body{  
background: rgb(234, 215, 223) }
```

If only the background color should be changed can be used:

```
.background{ background-color: rgb(234,  
215, 223) }
```

This example shows the color as background, it is applied via the CSS property "background".

To optimize and compress your CSS code, you can use our [online CSS compressor and optimizer](#) based on csstidy. If you want to create a linear or radial gradient as background or border, check our [CSS Gradient Generator](#).

Hey! You found this booklet interesting? Support Converting Colors with the new Membership Option!

The pro membership hides all ads, plus gives you double the colors in the color bucket, and more awesome pro features!

[Learn more, Memberships starting at \\$2.50/m!](#)

**Follow me
on Twitter!**

@ConvertingColor