

# Converting Colors

HunterLab(84.5713, 1.6650,  
5.4321)

Have a look what the booklet for  
HunterLab(84.5713, 1.6650, 5.4321)  
contains.

<b>HunterLab(84.5561, 1.5191, 5.6199)</b> .....	3
<b><i>Conversions</i></b> .....	4
<b><i>Details</i></b> .....	6
<b><i>Harmonies</i></b> .....	12
<b><i>Previews</i></b> .....	24
<b><i>Color Blindness Simulation</i></b> .....	28
<b><i>CSS Examples</i></b> .....	31

# Color

**HunterLab(84.5561, 1.5191,  
5.6199)**

# Conversions

## Conversions Part 1

Format	Color
Hex	E9D8DA
RGB	233, 216, 218
RGB Percent	91%, 85%, 85%
CMY	0.0863, 0.1529, 0.1451
CMYK	0.00, 0.07, 0.06, 0.09
HSL	353°, 28%, 88%
HSV	353°, 7%, 91%
XYZ	70.8150, 71.4973, 76.3977
YIQ	221.3110, 9.4900, 4.2260

# Conversions

## Conversions Part 2

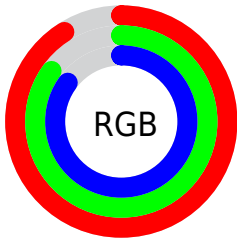
Format	Color
R <sub>Y</sub> B	233, 216, 218
Decimal	15325402
CIE Lab	87.73, 6.18, 1.12
CIE LCh	88, 6.282, 10.263
Yxy	71.5005, 0.3238, 0.3269
Android (android.graphics.Color)	4293515482 (0xFFE9D8DA)
YUV	221.3110, -1.6323, 10.2513
Hunter-Lab	84.5561, 1.5191, 5.6199

# Details

The HunterLab color  $84.5561, 1.5191, 5.6199$  is a light color, and the websafe version is hex `CCCCCC`. A complement of this color would be  $88.6838, -10.5099, 3.9163$ , and the grayscale version is  $85.1733, -4.5446, 4.6276$ .

A 20% lighter version of the original color is  $100.0000, -5.3358, 5.4332$ , and  $61.2219, 2.1603, 4.2055$  is the 20% darker color. If you saturate the color by 10%, you get  $77.0617, 10.4635, 6.8242$ , and if you desaturate by 10%, it is  $92.4350, -7.1265, 4.6695$ .

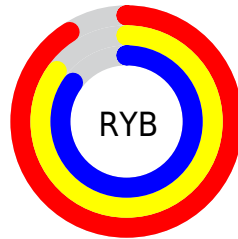
# Distribution



Red (91%)

Green (85%)

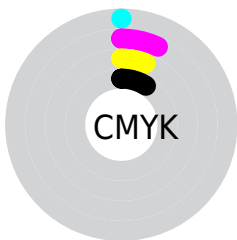
Blue (85%)



Red (91%)

Yellow (85%)

Blue (85%)

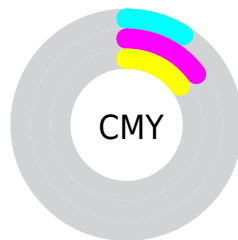


Cyan (0%)

Magenta (7%)

Yellow (6%)

Black (9%)



Cyan (9%)

Magenta (15%)

Yellow (15%)

# Brightness & Saturation Gradients

These gradients show how the HunterLab color 84.5561, 1.5191, 5.6199 changes by changing the brightness by 10 percent. The first figure shows a shift by +10% for each color and the second figure -10%.

Similar to the brightness gradients but the following saturation gradients show a change of the HunterLab color 84.5561, 1.5191, 5.6199 by changing the saturation by 10% instead.



84.5561, 1.5191,  
5.6199

84.5561, 1.5191,  
5.6199

215.8242, -3.3349,  
13.1440

72.6297, 1.8642,  
4.9210

110.1572, 0.6909,  
7.1097

61.3219, 2.1630,  
4.2517

123.7783, 0.2180,  
7.8957

50.6708, 2.4086,  
3.6147

137.9187, -0.2917,  
8.7084

40.7197, 2.5950,  
3.0117

152.5600, -0.8365,  
9.5468

31.5217, 2.7143,  
2.4446

167.6856, -1.4146,  
10.4102

23.1444, 2.7555,  
1.9155

183.2805, -2.0245,

15.6780, 2.7021,

11.2980

1.4267

199.3309, -2.6650,  
12.2094

■ 9.2493, 2.5342,  
1.0051

0.0000, NaN, NaN

■ 84.5561, 1.5191,  
5.6199

■ 84.5561, 1.5191,  
5.6199

■ 77.0617, 10.4635,  
6.8242

■ 92.4350, -7.1265,  
4.6695

■ 70.0144, 19.7137,  
8.3198

■ 98.0122, -12.3215,  
2.9483

■ 63.5019, 29.2130,  
10.1460

■ 57.6297, 38.8062,  
12.3241

■ 52.5219, 48.1745,  
14.8352

■ 48.3118, 56.7841,  
17.5883

■ 45.1182, 63.9094,  
20.3943

■ 43.0047, 68.8249,  
22.9786

■ 41.9167, 71.2055,  
25.0478

# Harmonies

## Analogous

The Analogous color harmony consists of three colors that are next to each other on the color wheel.



84.5579, 1.2513, 2.6370



84.5561, 1.5191, 5.6199



84.5579, 0.1479, 8.2369

# Triad

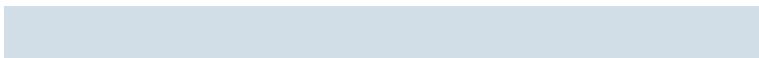
The Triadic color harmony groups three colors that are evenly spaced from another and form a triangle on the color wheel.



84.5579, 1.5168, 5.6213



84.5579, -8.3893, 8.8758



84.5579, -6.5488, -0.9930

# Complementary

The Complementary color scheme is a pair of colors which are on the opposite of each other on the color wheel.



84.5561, 1.5191, 5.6199



88.6838, -10.5099, 3.9163

# Split Complementary

Split-complementary colors differ from the complementary color scheme. The scheme consists of three colors, the original color and two neighbors of the complement color.



84.5579, -9.0816, 0.7997



84.5561, 1.5191, 5.6199



84.5579, -10.1334, 6.5224

# Square

The Square scheme is like the rectangle color scheme, but the four colors are evenly spaced on the color wheel.



84.5579, 1.5168, 5.6213



84.5579, -5.5911, 10.0699



84.5579, -10.3850, 3.5713



84.5579, -3.4362, -1.2558



# Rectangle

The Rectangle color scheme consists of four colors that form a rectangle on the color wheel.



84.5561, 1.5191, 5.6199



84.5579, -1.4958, 9.4470



84.5579, -10.3850, 3.5713



84.5579, -7.4950, -0.5463

# Sweetspot

The Sweet Spot groups the original color and five complimentary colors.



84.5579, 1.5168, 5.6213



98.2357, -3.4199, 5.6382



84.8191, 3.3733, -1.5643



45.4886, -1.6263, 2.6037

0.0000, NaN, NaN



46.2646, -2.4686, 2.5136



# Same Dimension

The Same Dimension uses a secret algorithm to generate beautiful new colors.



84.5579, 1.5168, 5.6213



92.1872, 3.3901, 6.4391



86.4006, -2.0712, 8.6199



38.8366, 1.6102, 2.7456



31.4403, 54.0178, 18.9570



8.8637, 15.3349, 4.5223

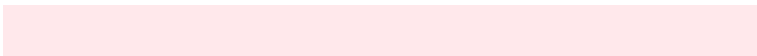


# Inverse Universe

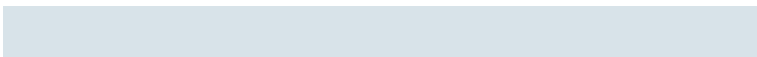
The Inverse Universe completely reimagines the original color for something new.



84.5579, 1.5168, 5.6213



92.1872, 3.3901, 6.4391



86.7728, -6.9613, 0.6720



38.8366, 1.6102, 2.7456



31.4403, 54.0178, 18.9570

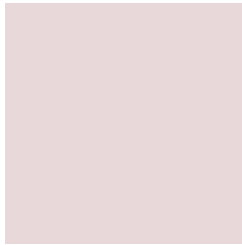


8.8637, 15.3349, 4.5223



# Previews

## White Background



This preview shows how the HunterLab color 84.5561, 1.5191, 5.6199 looks on a white background.

## Color Contrast Check

Large Text (above 18pt) WCAG AA × Fail

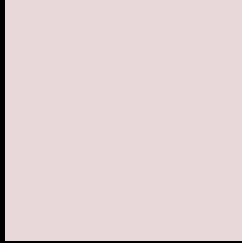
Any Text WCAG AA × Fail

Large Text (above 18pt) WCAG AAA × Fail

Any Text WCAG AAA × Fail



# Black Background



This preview shows how the HunterLab color 84.5561, 1.5191, 5.6199 looks on a black background.

## Color Contrast Check

Large Text (above 18pt) WCAG AA ✓ Pass

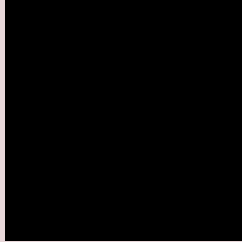
Any Text WCAG AA ✓ Pass

Large Text (above 18pt) WCAG AAA ✓ Pass

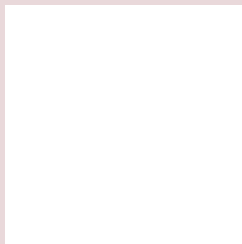
Any Text WCAG AAA ✓ Pass

If you want to check with other color combinations, try the [Color Contrast Checker](#).

## HunterLab 84.5561, 1.5191, 5.6199 Background



This preview shows how black text looks on a background with the HunterLab color 84.5561, 1.5191, 5.6199.



This preview shows how white text looks on a background with the HunterLab color 84.5561, 1.5191,

5.6199.

# Color Blindness Simulation

Color vision deficiency is a very complex topic, and I could not describe the different causes any better than Wikipedia does, so if you want to learn more, you should check out their [article about color blindness](#).

## Dichromacy



### Original Color

84.5561, 1.5191, 5.6199

### Protanopia

84.6626, -2.7028, 4.7034

### Deuteranopia

84.6051, 6.3752, 5.2798



## Tritanopia

84.5724, 5.5065, -0.7913

# Trichromacy



## Original Color

84.5561, 1.5191, 5.6199

## Protanomaly

84.6098, -1.3678, 5.1497

## Deuteranomaly

84.5922, 4.7987, 5.2370

## Tritanomaly

84.6075, 3.7531, 1.7793

# Monochromacy



## Original Color

84.5561, 1.5191, 5.6199

## Achromatopsia

85.0326, -4.5371, 4.6200

## Achromatomaly

84.7572, -2.3760, 4.8203

# CSS Examples

## Text

The CSS property to change the color of the text to HunterLab 84.5561, 1.5191, 5.6199 is called "color". The color property can be set on classes, ids or directly on the HTML element.

This example shows how text in the color `rgb(233, 216, 218)` looks like.

```
.text, #text, p{  
    color:rgb(233, 216, 218)  
}
```

If you want to add a text shadow in that color use the text-shadow property, you can generate a text shadow directly with our [CSS Text Shadow Generator](#).

Here you see how black text with a 4 pixel rgb(233, 216, 218) colored shadow looks like.

```
.shadow{ text-shadow: 4px 4px 2px rgb(233, 216, 218) }
```

## Border

The CSS property to change the border of an element to HunterLab 84.5561, 1.5191, 5.6199 is called "border".

The border property can be set on classes, ids or directly on the HTML element.

This example shows the color as border, it can be applied via the CSS property "border" or "border-color".

```
.border, #border, table{ border:4px solid rgb(233, 216, 218) }
```



If only the border color should be changed use the property `border-color`.

```
.border{ border-color:rgb(233, 216, 218) }
```

If you want to add a box shadow in that color use:

Here you see how a box with a 4 pixel `rgb(233, 216, 218)` colored shadow looks like.

```
.boxshadow{ -moz-box-shadow:4px 4px 4px  
4px rgb(233, 216, 218); -webkit-box-  
shadow:4px 4px 4px 4px rgb(233, 216, 218);  
box-shadow:4px 4px 4px 4px rgb(233, 216,  
218) }
```

# Background

The CSS property to change the background color of an element to HunterLab 84.5561, 1.5191, 5.6199 is called "background". The background property can be set on classes, ids or directly on the HTML element.

```
.background, #background, body{  
background: rgb(233, 216, 218) }
```

If only the background color should be changed can be used:

```
.background{ background-color: rgb(233,  
216, 218) }
```

This example shows the color as background, it is applied via the CSS property "background".

To optimize and compress your CSS code, you can use our [online CSS compressor and optimizer](#) based on csstidy. If you want to create a linear or radial gradient as background or border, check our [CSS Gradient Generator](#).

Hey! You found this booklet interesting? Support Converting Colors with the new Membership Option!

The pro membership hides all ads, plus gives you double the colors in the color bucket, and more awesome pro features!

**[Learn more, Memberships starting at \\$2.50/m!](#)**

**Follow me  
on Twitter!**

@ConvertingColor