

Converting Colors

HunterLab(84.8003, 0.1504,
10.6490)

Have a look what the booklet for
HunterLab(84.8003, 0.1504,
10.6490) contains.

HunterLab(84.7596, 0.0541, 10.4867)	3
<i>Conversions</i>	4
<i>Details</i>	6
<i>Harmonies</i>	12
<i>Previews</i>	24
<i>Color Blindness Simulation</i>	28
<i>CSS Examples</i>	31

Color

**HunterLab(84.7596, 0.0541,
10.4867)**

Conversions

Conversions Part 1

Format	Color
Hex	EBD9D0
RGB	235, 217, 208
RGB Percent	92%, 85%, 82%
CMY	0.0784, 0.1490, 0.1843
CMYK	0.00, 0.08, 0.11, 0.08
HSL	20°, 40%, 87%
HSV	20°, 11%, 92%
XYZ	70.4589, 71.8419, 69.8277
YIQ	221.3560, 13.6170, 1.0170

Conversions

Conversions Part 2

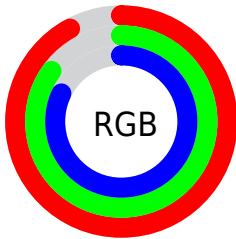
Format	Color
R _Y B	235, 222, 208
Decimal	15456720
CIE Lab	87.89, 4.70, 6.65
CIE LCh	88, 8.149, 54.745
Yxy	71.8451, 0.3322, 0.3387
Android (android.graphics.Color)	4293646800 (0xFFEBD9D0)
YUV	221.3560, -6.5845, 11.9658
Hunter-Lab	84.7596, 0.0541, 10.4867

Details

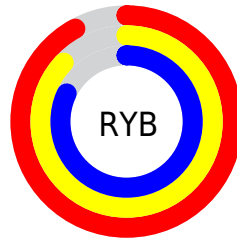
The HunterLab color $84.7596, 0.0541, 10.4867$ is a light color, and the websafe version is hex `CCCCCC`. A complement of this color would be $85.9065, -8.6197, -1.4616$, and the grayscale version is $85.2123, -4.5467, 4.6297$.

A 20% lighter version of the original color is $100.0000, -5.3358, 5.4332$, and $61.4471, 0.9480, 8.3814$ is the 20% darker color. If you saturate the color by 10%, you get $79.4212, 4.7012, 14.9622$, and if you desaturate by 10%, it is $90.3054, -4.2504, 5.6911$.

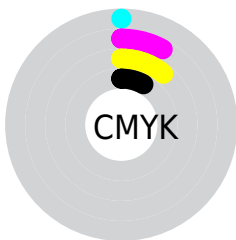
Distribution



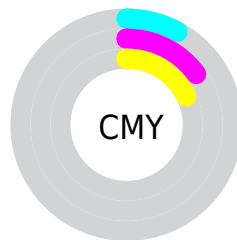
- Red (92%)
- Green (85%)
- Blue (82%)



- Red (92%)
- Yellow (87%)
- Blue (82%)



- Cyan (0%)
- Magenta (8%)
- Yellow (11%)
- Black (8%)



- Cyan (8%)
- Magenta (15%)
- Yellow (18%)

Brightness & Saturation Gradients

These gradients show how the HunterLab color 84.7596, 0.0541, 10.4867 changes by changing the brightness by 10 percent. The first figure shows a shift by +10% for each color and the second figure -10%.

Similar to the brightness gradients but the following saturation gradients show a change of the HunterLab color 84.7596, 0.0541, 10.4867 by changing the saturation by 10% instead.

84.7596, 0.0541,
10.4867

84.7596, 0.0541,
10.4867

216.1023, -5.3173,
19.9288

72.8232, 0.4683,
9.5260

110.3795, -0.9037,
12.4620

61.5048, 0.8399,
8.5793

124.0094, -1.4375,
13.4751

50.8424, 1.1625,
7.6463

138.1583, -2.0061,
14.5060

40.8792, 1.4310,
6.7242

152.8078, -2.6077,
15.5548

31.6682, 1.6386,
5.8087

167.9413, -3.2409,
16.6215

23.2766, 1.7758,
4.8923

183.5438, -3.9043,

15.7942, 1.8287,

17.7061

3.9611

199.6017, -4.5968,
18.8086

■ 9.3483, 1.7754,
3.4593

0.0000, NaN, NaN

■ 84.7596, 0.0541,
10.4867

■ 84.7596, 0.0541,
10.4867

■ 79.4212, 4.7012,
14.9622

■ 90.3054, -4.2504,
5.6911

■ 74.3092, 9.7286,
19.0557

■ 96.0318, -8.2384,
0.6194

■ 69.4540, 15.1575,
22.6979

■ 98.1847, -11.7094,
3.1659

■ 64.8887, 20.9969,
25.8054

■ 60.6506, 27.2306,
28.2838

■ 56.7807, 33.8025,
30.0347

■ 53.3218, 40.5989,
30.9722

■ 50.3146, 47.4313,
31.0541

■ 48.1291, 53.0439,
30.5855

Harmonies

Analogous

The Analogous color harmony consists of three colors that are next to each other on the color wheel.



84.7615, 2.7205, 7.6804



84.7596, 0.0541, 10.4867



84.7615, -3.8070, 11.7182

Triad

The Triadic color harmony groups three colors that are evenly spaced from another and form a triangle on the color wheel.



84.7615, 0.0517, 10.4880



84.7615, -12.2035, 5.2949



84.7615, -1.2162, -2.4521

Complementary

The Complementary color scheme is a pair of colors which are on the opposite of each other on the color wheel.



84.7596, 0.0541, 10.4867



85.9065, -8.6197, -1.4616

Split Complementary

Split-complementary colors differ from the complementary color scheme. The scheme consists of three colors, the original color and two neighbors of the complement color.



84.7615, -5.2450, -3.1643



84.7596, 0.0541, 10.4867



84.7615, -11.5393, 1.4281

Square

The Square scheme is like the rectangle color scheme, but the four colors are evenly spaced on the color wheel.



84.7615, 0.0517, 10.4880



84.7615, -10.8427, 8.8120



84.7615, -9.0109, -1.7135



84.7615, 1.9788, 0.1893

Rectangle

The Rectangle color scheme consists of four colors that form a rectangle on the color wheel.



84.7596, 0.0541, 10.4867



84.7615, -6.5160, 11.5224



84.7615, -9.0109, -1.7135



84.7615, -2.5199, -2.9302

Sweetspot

The Sweet Spot groups the original color and five complimentary colors.



84.7615, 0.0517, 10.4880



98.1361, -3.9670, 7.0667



82.6231, 7.8160, -0.5838



45.1732, -1.6636, 3.4692

0.0000, NaN, NaN



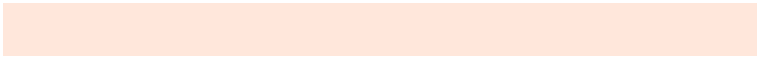
46.2646, -2.4686, 2.5136

Same Dimension

The Same Dimension uses a secret algorithm to generate beautiful new colors.



84.7615, 0.0517, 10.4880



91.4644, 1.3314, 12.8059



88.9322, -6.9358, 14.8933



39.8432, -0.3926, 4.4273



36.1959, 38.7570, 22.9822



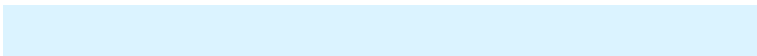
10.9541, 8.7165, 6.9025

Inverse Universe

The Inverse Universe completely reimagines the original color for something new.



85.9065, -8.6197, -1.4616



92.9969, -10.2802, -3.1927



81.6984, -1.6610, -6.7268



40.2820, -3.7144, -0.1509



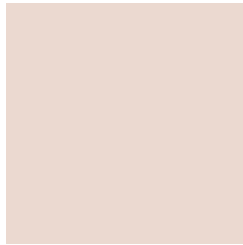
41.1499, -6.3247, -37.7806



12.2690, -2.8932, -9.0896

Previews

White Background



This preview shows how the HunterLab color 84.7596, 0.0541, 10.4867 looks on a white background.

Color Contrast Check

Large Text (above 18pt) WCAG AA × Fail

Any Text WCAG AA × Fail

Large Text (above 18pt) WCAG AAA × Fail

Any Text WCAG AAA × Fail

Black Background



This preview shows how the HunterLab color 84.7596, 0.0541, 10.4867 looks on a black background.

Color Contrast Check

Large Text (above 18pt) WCAG AA ✓ Pass

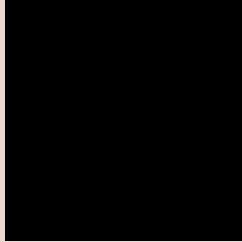
Any Text WCAG AA ✓ Pass

Large Text (above 18pt) WCAG AAA ✓ Pass

Any Text WCAG AAA ✓ Pass

If you want to check with other color combinations, try the [Color Contrast Checker](#).

HunterLab 84.7596, 0.0541, 10.4867 Background



This preview shows how black text looks on a background with the HunterLab color 84.7596, 0.0541, 10.4867.

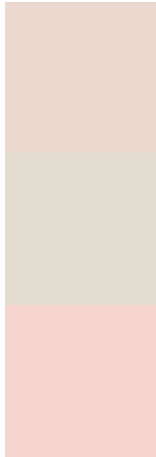


This preview shows how white text looks on a background with the HunterLab color 84.7596, 0.0541,

Color Blindness Simulation

Color vision deficiency is a very complex topic, and I could not describe the different causes any better than Wikipedia does, so if you want to learn more, you should check out their [article about color blindness](#).

Dichromacy



Original Color

84.7596, 0.0541, 10.4867

Protanopia

84.9239, -4.0487, 10.1451

Deuteranopia

84.7259, 6.1764, 10.1036



Tritanopia

84.8431, 6.3482, 0.0754

Trichromacy



Original Color

84.7596, 0.0541, 10.4867

Protanomaly

84.9055, -2.5285, 10.1512

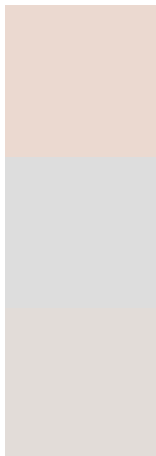
Deuteranomaly

84.6013, 4.2255, 9.9305

Tritanomaly

84.7817, 4.0853, 3.9851

Monochromacy



Original Color

84.7596, 0.0541, 10.4867

Achromatopsia

85.0326, -4.5371, 4.6200

Achromatomaly

85.0371, -3.2393, 7.0470

CSS Examples

Text

The CSS property to change the color of the text to HunterLab 84.7596, 0.0541, 10.4867 is called "color". The color property can be set on classes, ids or directly on the HTML element.

This example shows how text in the color `rgb(235, 217, 208)` looks like.

```
.text, #text, p{  
    color:rgb(235, 217, 208)  
}
```

If you want to add a text shadow in that color use the text-shadow property, you can generate a text shadow directly with our [CSS Text Shadow Generator](#).

Here you see how black text with a 4 pixel rgb(235, 217, 208) colored shadow looks like.

```
.shadow{ text-shadow: 4px 4px 2px rgb(235, 217, 208) }
```

Border

The CSS property to change the border of an element to HunterLab 84.7596, 0.0541, 10.4867 is called "border". The border property can be set on classes, ids or directly on the HTML element.

This example shows the color as border, it can be applied via the CSS property "border" or "border-color".

```
.border, #border, table{ border:4px solid rgb(235, 217, 208) }
```


If only the border color should be changed use the property border-color.

```
.border{ border-color:rgb(235, 217, 208) }
```

If you want to add a box shadow in that color use:

Here you see how a box with a 4 pixel rgb(235, 217, 208) colored shadow looks like.

```
.boxshadow{ -moz-box-shadow:4px 4px 4px  
4px rgb(235, 217, 208); -webkit-box-  
shadow:4px 4px 4px 4px rgb(235, 217, 208);  
box-shadow:4px 4px 4px 4px rgb(235, 217,  
208) }
```

Background

The CSS property to change the background color of an element to HunterLab 84.7596, 0.0541, 10.4867 is called "background". The background property can be set on classes, ids or directly on the HTML element.

```
.background, #background, body{  
background: rgb(235, 217, 208) }
```

If only the background color should be changed can be used:

```
.background{ background-color: rgb(235,  
217, 208) }
```

This example shows the color as background, it is applied via the CSS property "background".

To optimize and compress your CSS code, you can use our [online CSS compressor and optimizer](#) based on csstidy. If you want to create a linear or radial gradient as background or border, check our [CSS Gradient Generator](#).

Hey! You found this booklet interesting? Support Converting Colors with the new Membership Option!

The pro membership hides all ads, plus gives you double the colors in the color bucket, and more awesome pro features!

[Learn more, Memberships starting at \\$2.50/m!](#)

**Follow me
on Twitter!**

@ConvertingColor