

Converting Colors

HunterLab(84.8026, 2.7530,
8.7970)

Have a look what the booklet for
HunterLab(84.8026, 2.7530, 8.7970)
contains.

HunterLab(84.9800, 2.5967, 8.9522)	3
<i>Conversions</i>	4
<i>Details</i>	6
<i>Harmonies</i>	12
<i>Previews</i>	24
<i>Color Blindness Simulation</i>	28
<i>CSS Examples</i>	31

Color

**HunterLab(84.9800, 2.5967,
8.9522)**

Conversions

Conversions Part 1

Format	Color
Hex	EFD8D4
RGB	239, 216, 212
RGB Percent	94%, 85%, 83%
CMY	0.0627, 0.1529, 0.1686
CMYK	0.00, 0.10, 0.11, 0.06
HSL	9°, 46%, 88%
HSV	9°, 11%, 94%
XYZ	72.0362, 72.2160, 72.4298
YIQ	222.4210, 14.9920, 3.6320

Conversions

Conversions Part 2

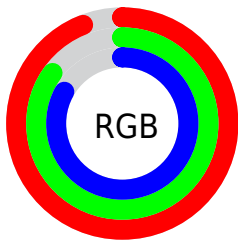
Format	Color
R _Y B	239, 217, 212
Decimal	15718612
CIE Lab	88.07, 7.28, 4.85
CIE LCh	88, 8.746, 33.664
Yxy	72.2192, 0.3325, 0.3333
Android (android.graphics.Color)	4293908692 (0xFFEFD8D4)
YUV	222.4210, -5.1376, 14.5398
Hunter-Lab	84.9800, 2.5967, 8.9522

Details

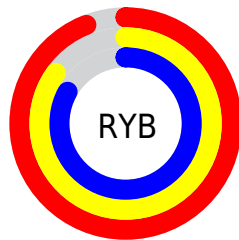
The HunterLab color $84.9800, 2.5967, 8.9522$ is a light color, and the websafe version is hex `CCCCCC`. A complement of this color would be $89.2437, -11.2871, 0.5407$, and the grayscale version is $85.6686, -4.5711, 4.6545$.

A 20% lighter version of the original color is $100.0000, -5.3358, 5.4332$, and $61.6371, 3.2224, 7.3533$ is the 20% darker color. If you saturate the color by 10%, you get $78.2997, 9.6657, 12.3475$, and if you desaturate by 10%, it is $91.9786, -4.1124, 5.4990$.

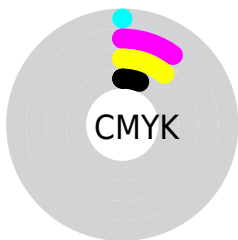
Distribution



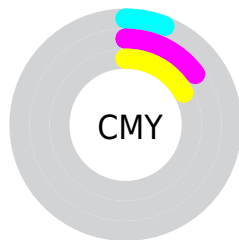
- Red (94%)
- Green (85%)
- Blue (83%)



- Red (94%)
- Yellow (85%)
- Blue (83%)



- Cyan (0%)
- Magenta (10%)
- Yellow (11%)
- Black (6%)



- Cyan (6%)
- Magenta (15%)
- Yellow (17%)

Brightness & Saturation Gradients

These gradients show how the HunterLab color 84.9800, 2.5967, 8.9522 changes by changing the brightness by 10 percent. The first figure shows a shift by +10% for each color and the second figure -10%.

Similar to the brightness gradients but the following saturation gradients show a change of the HunterLab color 84.9800, 2.5967, 8.9522 by changing the saturation by 10% instead.

84.9800, 2.5967,
8.9522

84.9800, 2.5967,
8.9522

216.4034, -1.8901,
17.7643

73.0327, 2.8928,
8.0781

110.6201, 1.8600,
10.7675

61.7029, 3.1403,
7.2233

124.2596, 1.4303,
11.7059

51.0284, 3.3319,
6.3886

138.4176, 0.9623,
12.6651

41.0521, 3.4610,
5.5729

153.0760, 0.4579,
13.6448

31.8270, 3.5189,
4.7740

168.2181, -0.0810,
14.6448

23.4200, 3.4939,
3.9879

183.8289, -0.6529,

15.9202, 3.3681,

15.6649

3.2068

199.8949, -1.2564,
16.7049

■ 9.4544, 3.1131,
2.6404

0.0000, NaN, NaN

■ 84.9800, 2.5967,
8.9522

■ 84.9800, 2.5967,
8.9522

■ 78.2997, 9.6657,
12.3475

■ 91.9786, -4.1124,
5.4990

■ 71.9815, 17.1257,
15.6464

■ 98.5347, -10.4711,
3.6063

■ 66.0876, 24.9698,
18.7964

■ 60.6903, 33.1404,
21.7157

■ 55.8735, 41.4911,
24.2888

■ 51.7285, 49.7472,
26.3667

■ 48.3439, 57.4833,
27.7878

■ 45.7878, 64.1555,
28.4312

■ 44.2486, 68.6421,
28.4675

Harmonies

Analogous

The Analogous color harmony consists of three colors that are next to each other on the color wheel.



84.9819, 4.0415, 5.1369



84.9800, 2.5967, 8.9522



84.9819, -0.7654, 11.5057

Triad

The Triadic color harmony groups three colors that are evenly spaced from another and form a triangle on the color wheel.



84.9819, 2.5943, 8.9536



84.9819, -11.9654, 8.1082



84.9819, -3.9993, -3.7756

Complementary

The Complementary color scheme is a pair of colors which are on the opposite of each other on the color wheel.



84.9800, 2.5967, 8.9522



89.2437, -11.2871, 0.5407

Split Complementary

Split-complementary colors differ from the complementary color scheme. The scheme consists of three colors, the original color and two neighbors of the complement color.



84.9819, -8.2478, -2.8823



84.9800, 2.5967, 8.9522



84.9819, -12.7920, 4.1115

Square

The Square scheme is like the rectangle color scheme, but the four colors are evenly spaced on the color wheel.



84.9819, 2.5943, 8.9536



84.9819, -9.1632, 11.0353



84.9819, -11.4444, 0.0577



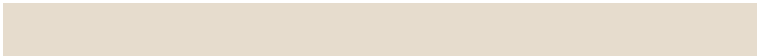
84.9819, 0.1863, -2.3255

Rectangle

The Rectangle color scheme consists of four colors that form a rectangle on the color wheel.



84.9800, 2.5967, 8.9522



84.9819, -3.6064, 12.2188



84.9819, -11.4444, 0.0577



84.9819, -5.4676, -3.7397

Sweetspot

The Sweet Spot groups the original color and five complimentary colors.



84.9819, 2.5943, 8.9536



97.6884, -3.2157, 6.5596



84.5341, 8.7323, -3.0971



44.9114, -1.2230, 3.1737

0.0000, NaN, NaN



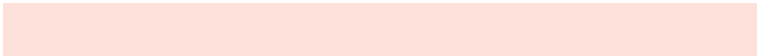
46.2646, -2.4686, 2.5136

Same Dimension

The Same Dimension uses a secret algorithm to generate beautiful new colors.



84.9819, 2.5943, 8.9536



89.4549, 4.8464, 10.6502



88.9939, -4.2483, 13.2651



40.1709, 0.6280, 3.8800



33.0687, 50.4573, 21.2601



10.1205, 12.7452, 6.4593

Inverse Universe

The Inverse Universe completely reimagines the original color for something new.



89.2437, -11.2871, 0.5407



95.1394, -13.6817, -0.5738



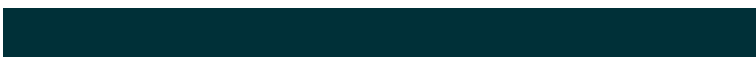
85.0997, -4.5568, -4.5368



41.8403, -4.8073, 0.5851



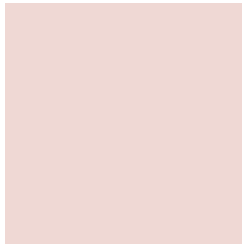
52.2931, -21.3298, -19.3168



15.4352, -6.6092, -5.0253

Previews

White Background



This preview shows how the HunterLab color 84.9800, 2.5967, 8.9522 looks on a white background.

Color Contrast Check

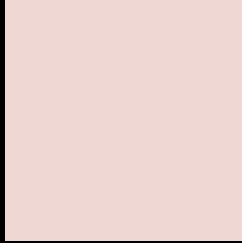
Large Text (above 18pt) WCAG AA × Fail

Any Text WCAG AA × Fail

Large Text (above 18pt) WCAG AAA × Fail

Any Text WCAG AAA × Fail

Black Background



This preview shows how the HunterLab color 84.9800, 2.5967, 8.9522 looks on a black background.

Color Contrast Check

Large Text (above 18pt) WCAG AA ✓ Pass

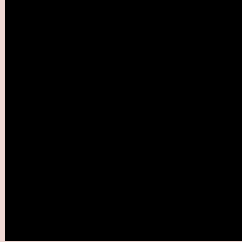
Any Text WCAG AA ✓ Pass

Large Text (above 18pt) WCAG AAA ✓ Pass

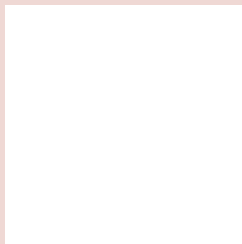
Any Text WCAG AAA ✓ Pass

If you want to check with other color combinations, try the [Color Contrast Checker](#).

HunterLab 84.9800, 2.5967, 8.9522 Background



This preview shows how black text looks on a background with the HunterLab color 84.9800, 2.5967, 8.9522.



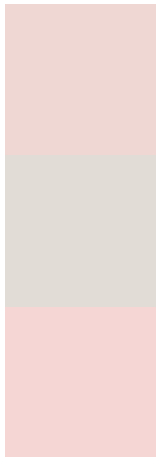
This preview shows how white text looks on a background with the HunterLab color 84.9800, 2.5967,

8.9522.

Color Blindness Simulation

Color vision deficiency is a very complex topic, and I could not describe the different causes any better than Wikipedia does, so if you want to learn more, you should check out their [article about color blindness](#).

Dichromacy



Original Color

84.9800, 2.5967, 8.9522

Protanopia

84.9766, -3.5699, 7.9118

Deuteranopia

85.0053, 5.7624, 9.0362



Tritanopia

84.8543, 7.9141, 0.1166

Trichromacy



Original Color

84.9800, 2.5967, 8.9522

Protanomaly

85.1211, -1.5488, 8.5766

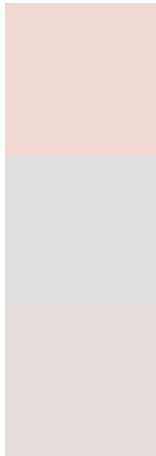
Deuteranomaly

85.0935, 4.5247, 9.1139

Tritanomaly

84.8211, 5.8201, 3.5695

Monochromacy



Original Color

84.9800, 2.5967, 8.9522

Achromatopsia

85.4670, -4.5603, 4.6436

Achromatomaly

85.2891, -2.2457, 6.4054

CSS Examples

Text

The CSS property to change the color of the text to HunterLab 84.9800, 2.5967, 8.9522 is called "color". The color property can be set on classes, ids or directly on the HTML element.

This example shows how text in the color `rgb(239, 216, 212)` looks like.

```
.text, #text, p{  
    color:rgb(239, 216, 212)  
}
```

If you want to add a text shadow in that color use the text-shadow property, you can generate a text shadow directly with our [CSS Text Shadow Generator](#).

Here you see how black text with a 4 pixel rgb(239, 216, 212) colored shadow looks like.

```
.shadow{ text-shadow: 4px 4px 2px rgb(239, 216, 212) }
```

Border

The CSS property to change the border of an element to HunterLab 84.9800, 2.5967, 8.9522 is called "border". The border property can be set on classes, ids or directly on the HTML element.

This example shows the color as border, it can be applied via the CSS property "border" or "border-color".

```
.border, #border, table{ border:4px solid rgb(239, 216, 212) }
```


If only the border color should be changed use the property `border-color`.

```
.border{ border-color:rgb(239, 216, 212) }
```

If you want to add a box shadow in that color use:

Here you see how a box with a 4 pixel `rgb(239, 216, 212)` colored shadow looks like.

```
.boxshadow{ -moz-box-shadow:4px 4px 4px  
4px rgb(239, 216, 212); -webkit-box-  
shadow:4px 4px 4px 4px rgb(239, 216, 212);  
box-shadow:4px 4px 4px 4px rgb(239, 216,  
212) }
```

Background

The CSS property to change the background color of an element to HunterLab 84.9800, 2.5967, 8.9522 is called "background". The background property can be set on classes, ids or directly on the HTML element.

```
.background, #background, body{  
background: rgb(239, 216, 212) }
```

If only the background color should be changed can be used:

```
.background{ background-color: rgb(239,  
216, 212) }
```

This example shows the color as background, it is applied via the CSS property "background".

To optimize and compress your CSS code, you can use our [online CSS compressor and optimizer](#) based on csstidy. If you want to create a linear or radial gradient as background or border, check our [CSS Gradient Generator](#).

Hey! You found this booklet interesting? Support Converting Colors with the new Membership Option!

The pro membership hides all ads, plus gives you double the colors in the color bucket, and more awesome pro features!

[Learn more, Memberships starting at \\$2.50/m!](#)

**Follow me
on Twitter!**

@ConvertingColor