

Converting Colors

HunterLab(84.8191, 22.9112,
-0.4470)

Have a look what the booklet for
HunterLab(84.8191, 22.9112,
-0.4470) contains.

HunterLab(83.5452, 18.6564, -2.3726)	3
<i>Conversions</i>	4
<i>Details</i>	6
<i>Harmonies</i>	12
<i>Previews</i>	24
<i>Color Blindness Simulation</i>	28
<i>CSS Examples</i>	31

Color

**HunterLab(83.5452, 18.6564,
-2.3726)**

Conversions

Conversions Part 1

Format	Color
Hex	FFCBE8
RGB	255, 203, 232
RGB Percent	100%, 80%, 91%
CMY	0.0000, 0.2039, 0.0902
CMYK	0.00, 0.20, 0.09, 0.00
HSL	327°, 100%, 90%
HSV	327°, 20%, 100%
XYZ	77.1614, 69.7980, 85.7494
YIQ	221.8540, 21.6830, 20.0430

Conversions

Conversions Part 2

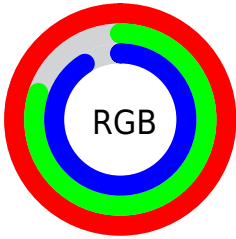
Format	Color
R _Y B	255, 203, 232
Decimal	16763880
CIE Lab	86.90, 22.91, -7.28
CIE LCh	87, 24.037, 342.362
Yxy	69.8009, 0.3316, 0.2999
Android (android.graphics.Color)	4294953960 (0xFFFFCBE8)
YUV	221.8540, 5.0020, 29.0690
Hunter-Lab	83.5452, 18.6564, -2.3726

Details

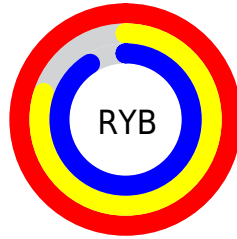
The HunterLab color **83.5452, 18.6564, -2.3726** is a light color, and the websafe version is hex **FFCCFF**. A complement of this color would be **94.7146, -26.0666, 12.8636**, and the grayscale version is **85.3773, -4.5555, 4.6387**.

A 20% lighter version of the original color is **100.0000, -5.3358, 5.4332**, and **60.5271, 17.5640, -2.6308** is the 20% darker color. If you saturate the color by 10%, you get **76.2300, 30.6881, -5.5442**, and if you desaturate by 10%, it is **91.3858, 6.7716, 1.2724**.

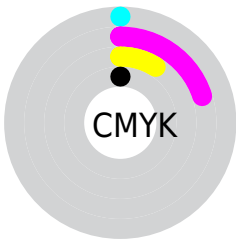
Distribution



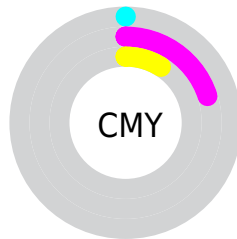
- Red (100%)
- Green (80%)
- Blue (91%)



- Red (100%)
- Yellow (80%)
- Blue (91%)



- Cyan (0%)
- Magenta (20%)
- Yellow (9%)
- Black (0%)



- Cyan (0%)
- Magenta (20%)
- Yellow (9%)

Brightness & Saturation Gradients

These gradients show how the HunterLab color 83.5452, 18.6564, -2.3726 changes by changing the brightness by 10 percent. The first figure shows a shift by +10% for each color and the second figure -10%.

Similar to the brightness gradients but the following saturation gradients show a change of the HunterLab color 83.5452, 18.6564, -2.3726 by changing the saturation by 10% instead.

83.5452, 18.6564,
-2.3726

83.5452, 18.6564,
-2.3726

214.4413, 19.4523,
2.3774

71.6688, 18.2561,
-2.7016

109.0526, 19.2298,
-1.5756

60.4140, 17.7763,
-2.9825

122.6298, 19.4205,
-1.1163

49.8192, 17.2047,
-3.2093

136.7280, 19.5526,
-0.6189

39.9282, 16.5297,
-3.3765

151.3284, 19.6298,
-0.0855

30.7954, 15.7368,
-3.4768

166.4145, 19.6557,
0.4822

22.4898, 14.8084,
-3.5009

181.9710, 19.6330,

15.1039, 13.7254,

1.0828

-3.4366

197.9842, 19.5644,
1.7149

■ 8.7394, 12.6373,
-3.3255

0.0000, INF, -NF

■ 83.5452, 18.6564,
-2.3726

■ 83.5452, 18.6564,
-2.3726

■ 76.2300, 30.6881,
-5.5442

■ 91.3858, 6.7716,
1.2724

■ 69.5297, 42.7108,
-8.0915

■ 99.6690, -4.8862,
5.2713

■ 63.5580, 54.4096,
-9.8136

■ 100.0000, -5.3358,
5.4332

■ 58.4392, 65.2727,
-10.4790

■ 54.2955, 74.5814,
-9.8661

■ 51.2189, 81.5208,
-7.8463

■ 49.2298, 85.4618,
-4.4875

■ 48.1863, 86.5861,
-0.3795

Harmonies

Analogous

The Analogous color harmony consists of three colors that are next to each other on the color wheel.



83.5469, 11.6399, -13.3265



83.5452, 18.6564, -2.3726



83.5469, 19.2613, 9.1062

Triad

The Triadic color harmony groups three colors that are evenly spaced from another and form a triangle on the color wheel.



83.5469, 18.6534, -2.3712



83.5469, -9.3391, 23.2527



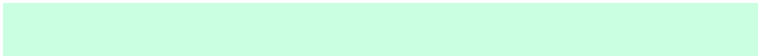
83.5469, -20.8177, -11.6135

Complementary

The Complementary color scheme is a pair of colors which are on the opposite of each other on the color wheel.



83.5452, 18.6564, -2.3726



94.7146, -26.0666, 12.8636

Split Complementary

Split-complementary colors differ from the complementary color scheme. The scheme consists of three colors, the original color and two neighbors of the complement color.



83.5469, -25.8026, -0.2832



83.5452, 18.6564, -2.3726



83.5469, -19.4304, 19.1786

Square

The Square scheme is like the rectangle color scheme, but the four colors are evenly spaced on the color wheel.



83.5469, 18.6534, -2.3712



83.5469, 2.6356, 22.8581



83.5469, -25.3095, 10.9212



83.5469, -11.3310, -19.1577

Rectangle

The Rectangle color scheme consists of four colors that form a rectangle on the color wheel.



83.5452, 18.6564, -2.3726



83.5469, 15.9082, 15.4516



83.5469, -25.3095, 10.9212



83.5469, -23.0507, -8.0582

Sweetspot

The Sweet Spot groups the original color and five complimentary colors.



83.5469, 18.6534, -2.3712



94.9713, 1.6245, 2.9896



81.2580, 12.9437, -18.7333



43.6889, 1.1045, 1.2631

0.0000, NaN, NaN



46.2646, -2.4686, 2.5136

Same Dimension

The Same Dimension uses a secret algorithm to generate beautiful new colors.



83.5469, 18.6534, -2.3712



80.8406, 22.9866, -3.5781



82.7368, 14.4198, 9.1740



42.6107, 2.6509, 0.7465



34.8756, 62.7483, -0.8966



10.9831, 19.9437, -1.7005

Inverse Universe

The Inverse Universe completely reimagines the original color for something new.



83.5469, 18.6534, -2.3712



80.8406, 22.9866, -3.5781



95.5071, -21.5688, 1.5416



42.6107, 2.6509, 0.7465



34.8756, 62.7483, -0.8966



10.9831, 19.9437, -1.7005

Previews

White Background



This preview shows how the HunterLab color 83.5452, 18.6564, -2.3726 looks on a white background.

Color Contrast Check

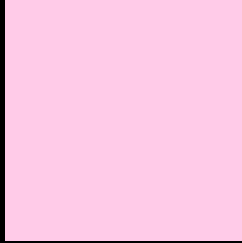
Large Text (above 18pt) WCAG AA × Fail

Any Text WCAG AA × Fail

Large Text (above 18pt) WCAG AAA × Fail

Any Text WCAG AAA × Fail

Black Background



This preview shows how the HunterLab color 83.5452, 18.6564, -2.3726 looks on a black background.

Color Contrast Check

Large Text (above 18pt) WCAG AA ✓ Pass

Any Text WCAG AA ✓ Pass

Large Text (above 18pt) WCAG AAA ✓ Pass

Any Text WCAG AAA ✓ Pass

If you want to check with other color combinations, try the [Color Contrast Checker](#).

HunterLab 83.5452, 18.6564, -2.3726 Background



This preview shows how black text looks on a background with the HunterLab color 83.5452, 18.6564, -2.3726.



This preview shows how white text looks on a background with the HunterLab color 83.5452, 18.6564, -2.3726.

-2.3726.

Color Blindness Simulation

Color vision deficiency is a very complex topic, and I could not describe the different causes any better than Wikipedia does, so if you want to learn more, you should check out their [article about color blindness](#).

Dichromacy



Original Color

83.5452, 18.6564, -2.3726

Protanopia

83.5764, -0.3676, -6.9896

Deuteranopia

83.4418, 6.2494, -1.6684



Tritanopia

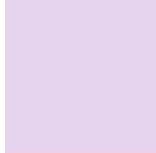
83.6385, 15.3090, 3.3133

Trichromacy



Original Color

83.5452, 18.6564, -2.3726



Protanomaly

83.3822, 6.5309, -5.4768



Deuteranomaly

83.4159, 10.7799, -2.1464



Tritanomaly

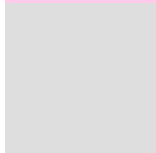
83.4822, 16.5287, 1.1394

Monochromacy



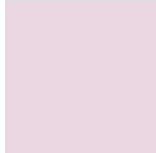
Original Color

83.5452, 18.6564, -2.3726



Achromatopsia

85.4670, -4.5603, 4.6436



Achromatomaly

84.6075, 3.7531, 1.7793

CSS Examples

Text

The CSS property to change the color of the text to HunterLab 83.5452, 18.6564, -2.3726 is called "color". The color property can be set on classes, ids or directly on the HTML element.

This example shows how text in the color `rgb(255, 203, 232)` looks like.

```
.text, #text, p{  
    color:rgb(255, 203, 232)  
}
```

If you want to add a text shadow in that color use the text-shadow property, you can generate a text shadow directly with our [CSS Text Shadow Generator](#).

Here you see how black text with a 4 pixel rgb(255, 203, 232) colored shadow looks like.

```
.shadow{ text-shadow: 4px 4px 2px rgb(255, 203, 232) }
```

Border

The CSS property to change the border of an element to HunterLab 83.5452, 18.6564, -2.3726 is called "border". The border property can be set on classes, ids or directly on the HTML element.

This example shows the color as border, it can be applied via the CSS property "border" or "border-color".

```
.border, #border, table{ border:4px solid rgb(255, 203, 232) }
```


If only the border color should be changed use the property `border-color`.

```
.border{ border-color:rgb(255, 203, 232) }
```

If you want to add a box shadow in that color use:

Here you see how a box with a 4 pixel `rgb(255, 203, 232)` colored shadow looks like.

```
.boxshadow{ -moz-box-shadow:4px 4px 4px  
4px rgb(255, 203, 232); -webkit-box-  
shadow:4px 4px 4px 4px rgb(255, 203, 232);  
box-shadow:4px 4px 4px 4px rgb(255, 203,  
232) }
```

Background

The CSS property to change the background color of an element to HunterLab 83.5452, 18.6564, -2.3726 is called "background". The background property can be set on classes, ids or directly on the HTML element.

```
.background, #background, body{  
background: rgb(255, 203, 232) }
```

If only the background color should be changed can be used:

```
.background{ background-color: rgb(255,  
203, 232) }
```

This example shows the color as background, it is applied via the CSS property "background".

To optimize and compress your CSS code, you can use our [online CSS compressor and optimizer](#) based on csstidy. If you want to create a linear or radial gradient as background or border, check our [CSS Gradient Generator](#).

Hey! You found this booklet interesting? Support Converting Colors with the new Membership Option!

The pro membership hides all ads, plus gives you double the colors in the color bucket, and more awesome pro features!

[Learn more, Memberships starting at \\$2.50/m!](#)

**Follow me
on Twitter!**

@ConvertingColor