

Converting Colors

HunterLab(85.0471, 1.0369,
11.6867)

Have a look what the booklet for
HunterLab(85.0471, 1.0369,
11.6867) contains.

HunterLab(85.1074, 1.1276, 11.7834)	3
<i>Conversions</i>	4
<i>Details</i>	6
<i>Harmonies</i>	12
<i>Previews</i>	24
<i>Color Blindness Simulation</i>	28
<i>CSS Examples</i>	31

Color

**HunterLab(85.1074, 1.1276,
11.7834)**

Conversions

Conversions Part 1

Format	Color
Hex	EFD9CE
RGB	239, 217, 206
RGB Percent	94%, 85%, 81%
CMY	0.0627, 0.1490, 0.1922
CMYK	0.00, 0.09, 0.14, 0.06
HSL	20°, 51%, 87%
HSV	20°, 14%, 94%
XYZ	71.5501, 72.4327, 68.6024
YIQ	222.3240, 16.6430, 1.2430

Conversions

Conversions Part 2

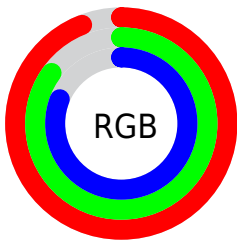
Format	Color
R_{YB}	239, 223, 206
Decimal	15718862
CIE _{Lab}	88.18, 5.80, 8.16
CIE _{LCh}	88, 10.012, 54.576
Yxy	72.4359, 0.3366, 0.3407
Android (android.graphics.Color)	4293908942 (0xFFEFD9CE)
YUV	222.3240, -8.0477, 14.6249
Hunter-Lab	85.1074, 1.1276, 11.7834

Details

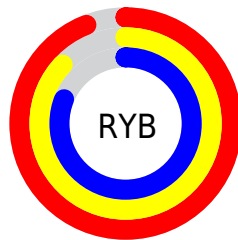
The HunterLab color $85.1074, 1.1276, 11.7834$ is a light color, and the websafe version is hex `CCCCCC`. A complement of this color would be $86.5096, -9.4811, -2.8269$, and the grayscale version is $85.6382, -4.5694, 4.6529$.

A 20% lighter version of the original color is $100.0000, -5.3358, 5.4332$, and $61.7859, 1.9930, 9.6013$ is the 20% darker color. If you saturate the color by 10%, you get $79.7126, 5.9567, 16.2644$, and if you desaturate by 10%, it is $90.7194, -3.3441, 6.9627$.

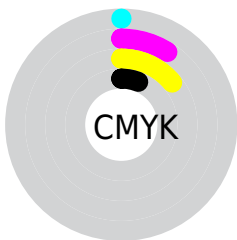
Distribution



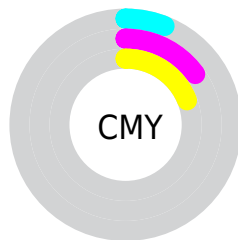
- Red (94%)
- Green (85%)
- Blue (81%)



- Red (94%)
- Yellow (87%)
- Blue (81%)



- Cyan (0%)
- Magenta (9%)
- Yellow (14%)
- Black (6%)



- Cyan (6%)
- Magenta (15%)
- Yellow (19%)

Brightness & Saturation Gradients

These gradients show how the HunterLab color 85.1074, 1.1276, 11.7834 changes by changing the brightness by 10 percent. The first figure shows a shift by +10% for each color and the second figure -10%.

Similar to the brightness gradients but the following saturation gradients show a change of the HunterLab color 85.1074, 1.1276, 11.7834 by changing the saturation by 10% instead.

85.1074, 1.1276,
11.7834

85.1074, 1.1276,
11.7834

216.5773, -3.8715,
21.7633

73.1538, 1.4920,
10.7488

110.7592, 0.2628,
13.8954

61.8174, 1.8114,
9.7236

124.4042, -0.2272,
14.9723

51.1359, 2.0789,
8.7066

138.5675, -0.7535,
16.0644

41.1521, 2.2888,
7.6937

153.2310, -1.3142,
17.1721

31.9189, 2.4335,
6.6787

168.3780, -1.9076,
18.2958

23.5029, 2.5025,
5.6512

183.9937, -2.5325,

15.9931, 2.4803,

19.4354

4.5926

200.0643, -3.1875,
20.5913

■ 9.5158, 2.3417,
4.0729

0.0000, NaN, NaN

■ 85.1074, 1.1276,
11.7834

■ 85.1074, 1.1276,
11.7834

■ 79.7126, 5.9567,
16.2644

■ 90.7194, -3.3441,
6.9627

■ 74.5555, 11.1806,
20.3397

■ 96.5208, -7.4843,
1.8490

■ 69.6682, 16.8184,
23.9353

■ 98.5347, -10.4711,
3.6062

■ 65.0856, 22.8743,
26.9630

■ 60.8467, 29.3237,
29.3245

■ 56.9943, 36.0967,
30.9201

■ 53.5720, 43.0605,
31.6690

■ 50.6200, 50.0020,
31.5465

■ 49.0349, 54.1337,
31.1628

Harmonies

Analogous

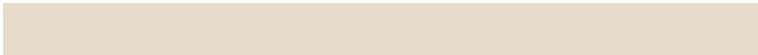
The Analogous color harmony consists of three colors that are next to each other on the color wheel.



85.1093, 4.4169, 8.3660



85.1074, 1.1276, 11.7834



85.1093, -3.6308, 13.2811

Triad

The Triadic color harmony groups three colors that are evenly spaced from another and form a triangle on the color wheel.



85.1093, 1.1251, 11.7847



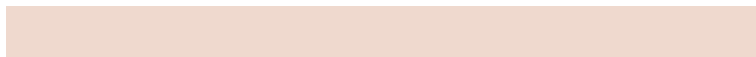
85.1093, -13.9490, 5.4967



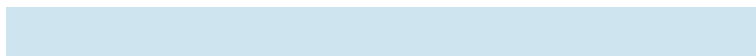
85.1093, -0.4916, -4.1534

Complementary

The Complementary color scheme is a pair of colors which are on the opposite of each other on the color wheel.



85.1074, 1.1276, 11.7834



86.5096, -9.4811, -2.8269

Split Complementary

Split-complementary colors differ from the complementary color scheme. The scheme consists of three colors, the original color and two neighbors of the complement color.



85.1093, -5.4569, -5.0308



85.1074, 1.1276, 11.7834



85.1093, -13.1523, 0.7223

Square

The Square scheme is like the rectangle color scheme, but the four colors are evenly spaced on the color wheel.



85.1093, 1.1251, 11.7847



85.1093, -12.2741, 9.7880



85.1093, -10.0720, -3.1994



85.1093, 3.4685, -0.8666

Rectangle

The Rectangle color scheme consists of four colors that form a rectangle on the color wheel.



85.1074, 1.1276, 11.7834



85.1093, -6.9628, 13.0537



85.1093, -10.0720, -3.1994



85.1093, -2.1015, -4.7476

Sweetspot

The Sweet Spot groups the original color and five complimentary colors.



85.1093, 1.1251, 11.7847



97.5187, -3.5036, 7.6050



82.5202, 10.6247, -1.7024



44.9024, -1.4586, 3.7048

0.0000, NaN, NaN



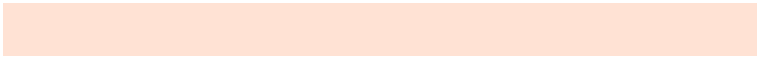
46.2646, -2.4686, 2.5136

Same Dimension

The Same Dimension uses a secret algorithm to generate beautiful new colors.



85.1093, 1.1251, 11.7847



89.6917, 2.8578, 14.2960



90.2048, -7.4305, 17.0727



40.7676, -0.3971, 4.5354



36.7458, 39.4176, 23.3327



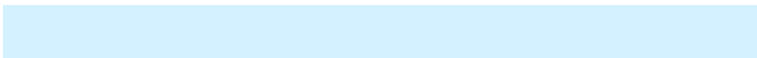
11.3998, 9.2442, 7.1863

Inverse Universe

The Inverse Universe completely reimagines the original color for something new.



86.5096, -9.4811, -2.8269



91.5457, -11.1956, -5.0591



81.3586, -0.9677, -9.3953



41.2179, -3.8045, -0.1601



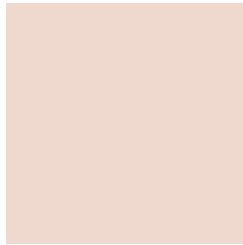
41.7796, -6.3982, -38.4091



12.7836, -2.9609, -9.5866

Previews

White Background



This preview shows how the HunterLab color 85.1074, 1.1276, 11.7834 looks on a white background.

Color Contrast Check

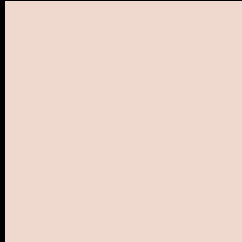
Large Text (above 18pt) WCAG AA × Fail

Any Text WCAG AA × Fail

Large Text (above 18pt) WCAG AAA × Fail

Any Text WCAG AAA × Fail

Black Background



This preview shows how the HunterLab color 85.1074, 1.1276, 11.7834 looks on a black background.

Color Contrast Check

Large Text (above 18pt) WCAG AA ✓ Pass

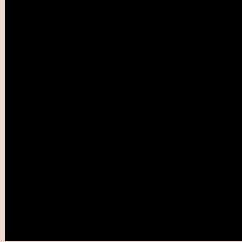
Any Text WCAG AA ✓ Pass

Large Text (above 18pt) WCAG AAA ✓ Pass

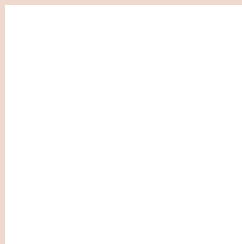
Any Text WCAG AAA ✓ Pass

If you want to check with other color combinations, try the [Color Contrast Checker](#).

HunterLab 85.1074, 1.1276, 11.7834 Background



This preview shows how black text looks on a background with the HunterLab color 85.1074, 1.1276, 11.7834.



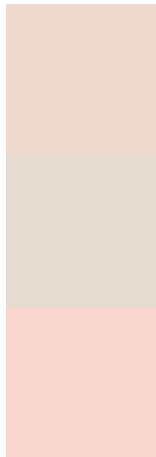
This preview shows how white text looks on a background with the HunterLab color 85.1074, 1.1276,

11.7834.

Color Blindness Simulation

Color vision deficiency is a very complex topic, and I could not describe the different causes any better than Wikipedia does, so if you want to learn more, you should check out their [article about color blindness](#).

Dichromacy



Original Color

85.1074, 1.1276, 11.7834

Protanopia

84.9909, -3.8745, 10.6739

Deuteranopia

85.1790, 6.0531, 11.5032



Tritanopia

84.9582, 8.2602, 0.2506

Trichromacy



Original Color

85.1074, 1.1276, 11.7834

Protanomaly

85.0434, -2.1682, 11.2102

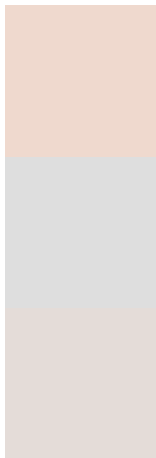
Deuteranomaly

85.1577, 4.4494, 11.4517

Tritanomaly

84.8613, 5.8287, 4.5995

Monochromacy



Original Color

85.1074, 1.1276, 11.7834

Achromatopsia

85.4670, -4.5603, 4.6436

Achromatomaly

85.2281, -2.5786, 7.2777

CSS Examples

Text

The CSS property to change the color of the text to HunterLab 85.1074, 1.1276, 11.7834 is called "color". The color property can be set on classes, ids or directly on the HTML element.

This example shows how text in the color `rgb(239, 217, 206)` looks like.

```
.text, #text, p{  
    color:rgb(239, 217, 206)  
}
```

If you want to add a text shadow in that color use the text-shadow property, you can generate a text shadow directly with our [CSS Text Shadow Generator](#).

Here you see how black text with a 4 pixel rgb(239, 217, 206) colored shadow looks like.

```
.shadow{ text-shadow: 4px 4px 2px rgb(239, 217, 206) }
```

Border

The CSS property to change the border of an element to HunterLab 85.1074, 1.1276, 11.7834 is called "border". The border property can be set on classes, ids or directly on the HTML element.

This example shows the color as border, it can be applied via the CSS property "border" or "border-color".

```
.border, #border, table{ border:4px solid rgb(239, 217, 206) }
```


If only the border color should be changed use the property `border-color`.

```
.border{ border-color:rgb(239, 217, 206) }
```

If you want to add a box shadow in that color use:

Here you see how a box with a 4 pixel `rgb(239, 217, 206)` colored shadow looks like.

```
.boxshadow{ -moz-box-shadow:4px 4px 4px  
4px rgb(239, 217, 206); -webkit-box-  
shadow:4px 4px 4px 4px rgb(239, 217, 206);  
box-shadow:4px 4px 4px 4px rgb(239, 217,  
206) }
```

Background

The CSS property to change the background color of an element to HunterLab 85.1074, 1.1276, 11.7834 is called "background". The background property can be set on classes, ids or directly on the HTML element.

```
.background, #background, body{  
background: rgb(239, 217, 206) }
```

If only the background color should be changed can be used:

```
.background{ background-color: rgb(239,  
217, 206) }
```

This example shows the color as background, it is applied via the CSS property "background".

To optimize and compress your CSS code, you can use our [online CSS compressor and optimizer](#) based on csstidy. If you want to create a linear or radial gradient as background or border, check our [CSS Gradient Generator](#).

Hey! You found this booklet interesting? Support Converting Colors with the new Membership Option!

The pro membership hides all ads, plus gives you double the colors in the color bucket, and more awesome pro features!

[Learn more, Memberships starting at \\$2.50/m!](#)

**Follow me
on Twitter!**

@ConvertingColor