

Converting Colors

HunterLab(85.1128, 3.7491,
6.9121)

Have a look what the booklet for
HunterLab(85.1128, 3.7491, 6.9121)
contains.

HunterLab(85.2331, 3.7553, 6.9214)	3
<i>Conversions</i>	4
<i>Details</i>	6
<i>Harmonies</i>	12
<i>Previews</i>	24
<i>Color Blindness Simulation</i>	28
<i>CSS Examples</i>	31

Color

**HunterLab(85.2331, 3.7553,
6.9214)**

Conversions

Conversions Part 1

Format	Color
Hex	F0D8D9
RGB	240, 216, 217
RGB Percent	94%, 85%, 85%
CMY	0.0588, 0.1529, 0.1490
CMYK	0.00, 0.10, 0.10, 0.06
HSL	358°, 44%, 89%
HSV	358°, 10%, 94%
XYZ	73.0155, 72.6468, 75.8196
YIQ	223.2900, 13.9830, 5.3990

Conversions

Conversions Part 2

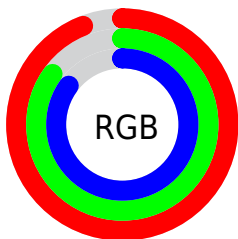
Format	Color
R _Y B	240, 216, 217
Decimal	15784153
CIE Lab	88.28, 8.45, 2.52
CIE LCh	88, 8.814, 16.627
Yxy	72.6500, 0.3297, 0.3280
Android (android.graphics.Color)	4293974233 (0xFFFF0D8D9)
YUV	223.2900, -3.1010, 14.6547
Hunter-Lab	85.2331, 3.7553, 6.9214

Details

The HunterLab color $85.2331, 3.7553, 6.9214$ is a light color, and the websafe version is hex FFCCCC . A complement of this color would be $91.1883, -12.6468, 2.8700$, and the grayscale version is $86.0383, -4.5908, 4.6746$.

A 20% lighter version of the original color is $100.0000, -5.3358, 5.4332$, and $61.8779, 4.3146, 5.4516$ is the 20% darker color. If you saturate the color by 10%, you get $77.5385, 12.8468, 8.9778$, and if you desaturate by 10%, it is $93.3492, -4.9825, 5.0714$.

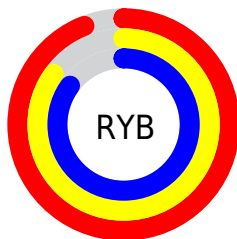
Distribution



Red (94%)

Green (85%)

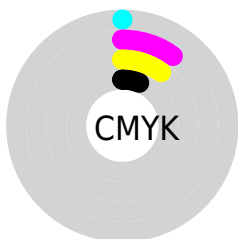
Blue (85%)



Red (94%)

Yellow (85%)

Blue (85%)

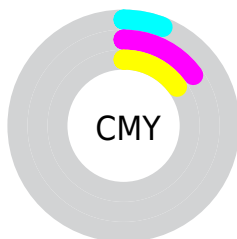


Cyan (0%)

Magenta (10%)

Yellow (10%)

Black (6%)



Cyan (6%)

Magenta (15%)

Yellow (15%)

Brightness & Saturation Gradients

These gradients show how the HunterLab color 85.2331, 3.7553, 6.9214 changes by changing the brightness by 10 percent. The first figure shows a shift by +10% for each color and the second figure -10%.

Similar to the brightness gradients but the following saturation gradients show a change of the HunterLab color 85.2331, 3.7553, 6.9214 by changing the saturation by 10% instead.

85.2331, 3.7553,
6.9214

85.2331, 3.7553,
6.9214

216.7489, -0.3382,
14.9351

73.2733, 3.9992,
6.1562

110.8965, 3.1166,
8.5346

61.9304, 4.1919,
5.4168

124.5468, 2.7332,
9.3785

51.2419, 4.3257,
4.7053

138.7154, 2.3098,
10.2468

41.2508, 4.3936,
4.0223

153.3839, 1.8487,
11.1390

32.0095, 4.3861,
3.3684

168.5358, 1.3518,
12.0544

23.5848, 4.2905,
2.7434

184.1562, 0.8207,

16.0651, 4.0877,

12.9926

2.1463

200.2314, 0.2569,
13.9529

■ 9.5764, 3.7477,
1.6154

0.0000, INF, NaN

■ 85.2331, 3.7553,
6.9214

■ 85.2331, 3.7553,
6.9214

■ 77.5385, 12.8468,
8.9778

■ 93.3492, -4.9825,
5.0714

■ 70.3369, 22.2984,
11.2575

■ 98.6233, -10.1586,
3.7174

■ 63.7271, 32.0407,
13.7671

■ 57.8273, 41.8849,
16.4785

■ 52.7741, 51.4497,
19.3030

■ 48.7084, 60.1148,
22.0675

■ 45.7439, 67.0826,
24.5168

■ 43.9188, 71.6379,
26.3773

■ 43.0667, 73.8032,
27.4356

Harmonies

Analogous

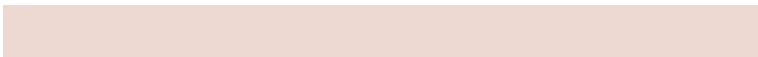
The Analogous color harmony consists of three colors that are next to each other on the color wheel.



85.2350, 3.8827, 2.7466



85.2331, 3.7553, 6.9214



85.2350, 1.3687, 10.3148

Triad

The Triadic color harmony groups three colors that are evenly spaced from another and form a triangle on the color wheel.



85.2350, 3.7529, 6.9228



85.2350, -10.6485, 10.0120



85.2350, -6.5112, -3.6149

Complementary

The Complementary color scheme is a pair of colors which are on the opposite of each other on the color wheel.



85.2331, 3.7553, 6.9214



91.1883, -12.6468, 2.8700

Split Complementary

Split-complementary colors differ from the complementary color scheme. The scheme consists of three colors, the original color and two neighbors of the complement color.



85.2350, -10.3163, -1.4549



85.2331, 3.7553, 6.9214



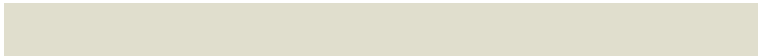
85.2350, -12.6719, 6.4901

Square

The Square scheme is like the rectangle color scheme, but the four colors are evenly spaced on the color wheel.



85.2350, 3.7529, 6.9228



85.2350, -6.9730, 12.0351



85.2350, -12.5516, 2.2914



85.2350, -2.1046, -3.4844

Rectangle

The Rectangle color scheme consists of four colors that form a rectangle on the color wheel.



85.2331, 3.7553, 6.9214



85.2350, -1.1513, 11.7387



85.2350, -12.5516, 2.2914



85.2350, -7.9012, -3.1281

Sweetspot

The Sweet Spot groups the original color and five complimentary colors.



85.2350, 3.7529, 6.9228



97.3409, -2.5581, 6.0088



85.8616, 7.3565, -3.8902



44.7084, -0.8374, 2.8525

0.0000, NaN, NaN



46.2646, -2.4686, 2.5136

Same Dimension

The Same Dimension uses a secret algorithm to generate beautiful new colors.



85.2350, 3.7529, 6.9228



89.5876, 5.9769, 7.8469



88.4955, -2.0826, 10.9658



39.7108, 1.5244, 3.1626



31.8712, 54.6327, 20.1883



9.2127, 15.8324, 5.5237

Inverse Universe

The Inverse Universe completely reimagines the original color for something new.



85.2350, 3.7529, 6.9228



89.5876, 5.9769, 7.8469



87.7738, -6.9289, -1.7220



39.7108, 1.5244, 3.1626



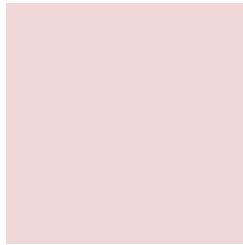
31.8712, 54.6327, 20.1883



9.2127, 15.8324, 5.5237

Previews

White Background



This preview shows how the HunterLab color 85.2331, 3.7553, 6.9214 looks on a white background.

Color Contrast Check

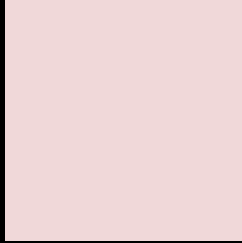
Large Text (above 18pt) WCAG AA × Fail

Any Text WCAG AA × Fail

Large Text (above 18pt) WCAG AAA × Fail

Any Text WCAG AAA × Fail

Black Background



This preview shows how the HunterLab color 85.2331, 3.7553, 6.9214 looks on a black background.

Color Contrast Check

Large Text (above 18pt) WCAG AA ✓ Pass

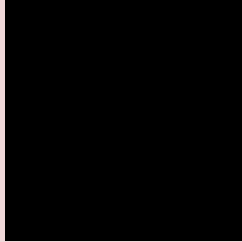
Any Text WCAG AA ✓ Pass

Large Text (above 18pt) WCAG AAA ✓ Pass

Any Text WCAG AAA ✓ Pass

If you want to check with other color combinations, try the [Color Contrast Checker](#).

HunterLab 85.2331, 3.7553, 6.9214 Background



This preview shows how black text looks on a background with the HunterLab color 85.2331, 3.7553, 6.9214.



This preview shows how white text looks on a background with the HunterLab color 85.2331, 3.7553,

6.9214.

Color Blindness Simulation

Color vision deficiency is a very complex topic, and I could not describe the different causes any better than Wikipedia does, so if you want to learn more, you should check out their [article about color blindness](#).

Dichromacy



Original Color

85.2331, 3.7553, 6.9214

Protanopia

85.4687, -3.0865, 5.6405

Deuteranopia

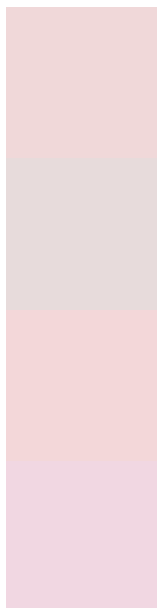
85.0506, 6.2156, 6.7540



Tritanopia

85.2877, 7.9001, 0.1359

Trichromacy



Original Color

85.2331, 3.7553, 6.9214

Protanomaly

85.3032, -0.5586, 5.9730

Deuteranomaly

85.2440, 5.3323, 6.9616

Tritanomaly

85.3186, 6.1472, 2.6797

Monochromacy



Original Color

85.2331, 3.7553, 6.9214

Achromatopsia

85.9017, -4.5835, 4.6672

Achromatomaly

85.4780, -1.4091, 5.1977

CSS Examples

Text

The CSS property to change the color of the text to HunterLab 85.2331, 3.7553, 6.9214 is called "color". The color property can be set on classes, ids or directly on the HTML element.

This example shows how text in the color `rgb(240, 216, 217)` looks like.

```
.text, #text, p{  
    color:rgb(240, 216, 217)  
}
```

If you want to add a text shadow in that color use the text-shadow property, you can generate a text shadow directly with our [CSS Text Shadow Generator](#).

Here you see how black text with a 4 pixel rgb(240, 216, 217) colored shadow looks like.

```
.shadow{ text-shadow: 4px 4px 2px rgb(240, 216, 217) }
```

Border

The CSS property to change the border of an element to HunterLab 85.2331, 3.7553, 6.9214 is called "border". The border property can be set on classes, ids or directly on the HTML element.

This example shows the color as border, it can be applied via the CSS property "border" or "border-color".

```
.border, #border, table{ border:4px solid rgb(240, 216, 217) }
```


If only the border color should be changed use the property `border-color`.

```
.border{ border-color:rgb(240, 216, 217) }
```

If you want to add a box shadow in that color use:

Here you see how a box with a 4 pixel `rgb(240, 216, 217)` colored shadow looks like.

```
.boxshadow{ -moz-box-shadow:4px 4px 4px  
4px rgb(240, 216, 217); -webkit-box-  
shadow:4px 4px 4px 4px rgb(240, 216, 217);  
box-shadow:4px 4px 4px 4px rgb(240, 216,  
217) }
```

Background

The CSS property to change the background color of an element to HunterLab 85.2331, 3.7553, 6.9214 is called "background". The background property can be set on classes, ids or directly on the HTML element.

```
.background, #background, body{  
background: rgb(240, 216, 217) }
```

If only the background color should be changed can be used:

```
.background{ background-color: rgb(240,  
216, 217) }
```

This example shows the color as background, it is applied via the CSS property "background".

To optimize and compress your CSS code, you can use our [online CSS compressor and optimizer](#) based on csstidy. If you want to create a linear or radial gradient as background or border, check our [CSS Gradient Generator](#).

Hey! You found this booklet interesting? Support Converting Colors with the new Membership Option!

The pro membership hides all ads, plus gives you double the colors in the color bucket, and more awesome pro features!

[Learn more, Memberships starting at \\$2.50/m!](#)

**Follow me
on Twitter!**

@ConvertingColor