

# Converting Colors

HunterLab(85.2135, 5.1690,  
7.3967)

Have a look what the booklet for  
HunterLab(85.2135, 5.1690, 7.3967)  
contains.

<b>HunterLab(85.2135, 5.1690, 7.3967)</b> .....	3
<b><i>Conversions</i></b> .....	4
<b><i>Details</i></b> .....	6
<b><i>Harmonies</i></b> .....	12
<b><i>Previews</i></b> .....	24
<b><i>Color Blindness Simulation</i></b> .....	28
<b><i>CSS Examples</i></b> .....	31

# Color

**HunterLab(85.2135, 5.1690,  
7.3967)**

# Conversions

## Conversions Part 1

<b>Format</b>	<b>Color</b>
Hex	F3D7D8
RGB	243, 215, 216
RGB Percent	95%, 84%, 85%
CMY	0.0471, 0.1568, 0.1529
CMYK	0.00, 0.12, 0.11, 0.05
HSL	358°, 54%, 90%
HSV	358°, 12%, 95%
XYZ	73.6572, 72.6134, 75.0993
YIQ	223.4860, 16.3670, 6.2470

# Conversions

## Conversions Part 2

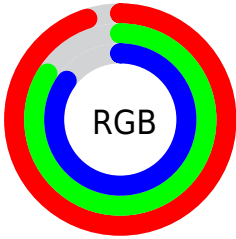
Format	Color
R <sub>Y</sub> B	243, 215, 216
Decimal	15980504
CIE Lab	88.26, 9.85, 3.06
CIE LCh	88, 10.316, 17.242
Yxy	72.6166, 0.3327, 0.3280
Android (android.graphics.Color)	4294170584 (0xFFFF3D7D8)
YUV	223.4860, -3.6906, 17.1138
Hunter-Lab	85.2135, 5.1690, 7.3967

# Details

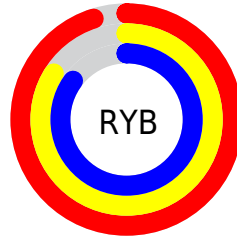
The HunterLab color **85.2135, 5.1690, 7.3967** is a light color, and the websafe version is hex **FFCCCC**. A complement of this color would be **92.1742, -13.9242, 2.5160**, and the grayscale version is **86.1252, -4.5954, 4.6793**.

A 20% lighter version of the original color is **100.0000, -5.3358, 5.4332**, and **61.8705, 5.6787, 5.9119** is the 20% darker color. If you saturate the color by 10%, you get **77.4720, 14.4329, 9.5733**, and if you desaturate by 10%, it is **93.3943, -3.7296, 5.4271**.

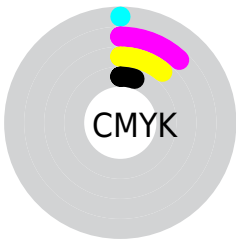
# Distribution



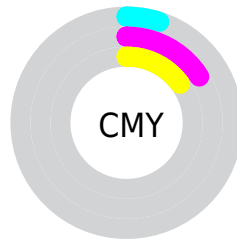
- Red (95%)
- Green (84%)
- Blue (85%)



- Red (95%)
- Yellow (84%)
- Blue (85%)



- Cyan (0%)
- Magenta (12%)
- Yellow (11%)
- Black (5%)



- Cyan (5%)
- Magenta (16%)
- Yellow (15%)

# Brightness & Saturation Gradients

These gradients show how the HunterLab color 85.2135, 5.1690, 7.3967 changes by changing the brightness by 10 percent. The first figure shows a shift by +10% for each color and the second figure -10%.

Similar to the brightness gradients but the following saturation gradients show a change of the HunterLab color 85.2135, 5.1690, 7.3967 by changing the saturation by 10% instead.



85.2135, 5.1690,  
7.3967

85.2135, 5.1690,  
7.3967

216.7222, 1.5562,  
15.5935

73.2547, 5.3489,  
6.6066

110.8751, 4.6501,  
9.0562

61.9128, 5.4747,  
5.8409

124.5246, 4.3232,  
9.9217

51.2254, 5.5379,  
5.1013

138.6923, 3.9545,  
10.8109

41.2354, 5.5308,  
4.3881

153.3600, 3.5463,  
11.7231

31.9954, 5.4434,  
3.7012

168.5112, 3.1007,  
12.6580

23.5720, 5.2615,  
3.0398

184.1309, 2.6194,

16.0539, 4.9648,

13.6150

2.4012

200.2054, 2.1041,  
14.5936

■ 9.5669, 4.5214,  
1.8477

0.0000, INF, NaN

■ 85.2135, 5.1690,  
7.3967

■ 85.2135, 5.1690,  
7.3967

■ 77.4720, 14.4329,  
9.5733

■ 93.3943, -3.7296,  
5.4271

■ 70.2456, 24.0622,  
11.9704

■ 98.8913, -9.2143,  
4.0532

■ 63.6381, 33.9724,  
14.5883

■ 57.7732, 43.9470,  
17.3871

■ 52.7921, 53.5629,  
20.2606

■ 48.8362, 62.1526,  
23.0147

■ 46.0129, 68.8942,  
25.3803

■ 44.3431, 73.1086,  
27.0914

■ 43.6736, 74.8357,  
27.8846

# Harmonies

## Analogous

The Analogous color harmony consists of three colors that are next to each other on the color wheel.



85.2154, 5.3772, 2.5205



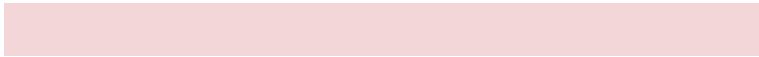
85.2135, 5.1690, 7.3967



85.2154, 2.3132, 11.3030

# Triad

The Triadic color harmony groups three colors that are evenly spaced from another and form a triangle on the color wheel.



85.2154, 5.1665, 7.3981



85.2154, -11.7385, 10.8207



85.2154, -6.7388, -5.1246

# Complementary

The Complementary color scheme is a pair of colors which are on the opposite of each other on the color wheel.



85.2135, 5.1690, 7.3967



92.1742, -13.9242, 2.5160

# Split Complementary

Split-complementary colors differ from the complementary color scheme. The scheme consists of three colors, the original color and two neighbors of the complement color.



85.2154, -11.2054, -2.6119



85.2135, 5.1690, 7.3967



85.2154, -14.0453, 6.7035

# Square

The Square scheme is like the rectangle color scheme, but the four colors are evenly spaced on the color wheel.



85.2154, 5.1665, 7.3981



85.2154, -7.4823, 13.1966



85.2154, -13.8525, 1.7834



85.2154, -1.5805, -4.9109



# Rectangle

The Rectangle color scheme consists of four colors that form a rectangle on the color wheel.



85.2135, 5.1690, 7.3967



85.2154, -0.6660, 12.9175



85.2154, -13.8525, 1.7834



85.2154, -8.3685, -4.5648

# Sweetspot

The Sweet Spot groups the original color and five complimentary colors.



85.2154, 5.1665, 7.3981



97.3394, -2.5659, 6.0294



85.9545, 9.4030, -5.3607



44.7075, -0.8420, 2.8646

0.0000, NaN, NaN



46.2646, -2.4686, 2.5136



# Same Dimension

The Same Dimension uses a secret algorithm to generate beautiful new colors.



85.2154, 5.1665, 7.3981



87.9075, 7.8820, 8.3712



89.0115, -1.6312, 11.9941



40.6104, 1.5574, 3.2650



32.3611, 55.4642, 20.5634



9.6110, 16.5067, 5.8417



# Inverse Universe

The Inverse Universe completely reimagines the original color for something new.



85.2154, 5.1665, 7.3981



87.9075, 7.8820, 8.3712



88.1688, -7.2885, -2.8195



40.6104, 1.5574, 3.2650



32.3611, 55.4642, 20.5634

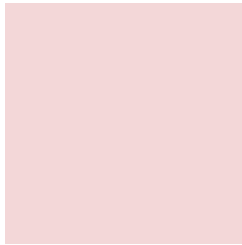


9.6110, 16.5067, 5.8417



# Previews

## White Background



This preview shows how the HunterLab color 85.2135, 5.1690, 7.3967 looks on a white background.

## Color Contrast Check

Large Text (above 18pt) WCAG AA × Fail

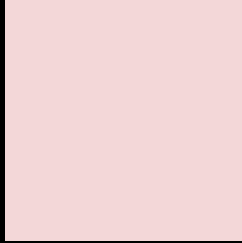
Any Text WCAG AA × Fail

Large Text (above 18pt) WCAG AAA × Fail

Any Text WCAG AAA × Fail



# Black Background



This preview shows how the HunterLab color 85.2135, 5.1690, 7.3967 looks on a black background.

## Color Contrast Check

Large Text (above 18pt) WCAG AA ✓ Pass

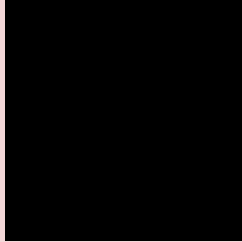
Any Text WCAG AA ✓ Pass

Large Text (above 18pt) WCAG AAA ✓ Pass

Any Text WCAG AAA ✓ Pass

If you want to check with other color combinations, try the [Color Contrast Checker](#).

## HunterLab 85.2135, 5.1690, 7.3967 Background



This preview shows how black text looks on a background with the HunterLab color 85.2135, 5.1690, 7.3967.



This preview shows how white text looks on a background with the HunterLab color 85.2135, 5.1690,

7.3967.

# Color Blindness Simulation

Color vision deficiency is a very complex topic, and I could not describe the different causes any better than Wikipedia does, so if you want to learn more, you should check out their [article about color blindness](#).

## Dichromacy



### Original Color

85.2135, 5.1690, 7.3967

### Protanopia

85.4378, -3.2554, 6.0820

### Deuteranopia

85.1255, 6.4056, 7.3173



## Tritanopia

85.2726, 9.3046, 0.6553

# Trichromacy



## Original Color

85.2135, 5.1690, 7.3967

## Protanomaly

85.3703, -0.3903, 6.5317

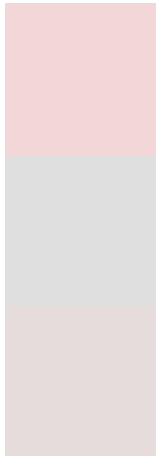
## Deuteranomaly

85.0201, 6.0522, 7.1901

## Tritanomaly

85.3009, 7.5535, 3.1816

# Monochromacy



## Original Color

85.2135, 5.1690, 7.3967

## Achromatopsia

85.9017, -4.5835, 4.6672

## Achromatomaly

85.5434, -1.2463, 5.7598

# CSS Examples

## Text

The CSS property to change the color of the text to HunterLab 85.2135, 5.1690, 7.3967 is called "color". The color property can be set on classes, ids or directly on the HTML element.

This example shows how text in the color `rgb(243, 215, 216)` looks like.

```
.text, #text, p{  
    color:rgb(243, 215, 216)  
}
```

If you want to add a text shadow in that color use the text-shadow property, you can generate a text shadow directly with our [CSS Text Shadow Generator](#).

Here you see how black text with a 4 pixel rgb(243, 215, 216) colored shadow looks like.

```
.shadow{ text-shadow: 4px 4px 2px rgb(243, 215, 216) }
```

## Border

The CSS property to change the border of an element to HunterLab 85.2135, 5.1690, 7.3967 is called "border". The border property can be set on classes, ids or directly on the HTML element.

This example shows the color as border, it can be applied via the CSS property "border" or "border-color".

```
.border, #border, table{ border:4px solid rgb(243, 215, 216) }
```



If only the border color should be changed use the property border-color.

```
.border{ border-color:rgb(243, 215, 216) }
```

If you want to add a box shadow in that color use:

Here you see how a box with a 4 pixel rgb(243, 215, 216) colored shadow looks like.

```
.boxshadow{ -moz-box-shadow:4px 4px 4px  
4px rgb(243, 215, 216); -webkit-box-  
shadow:4px 4px 4px 4px rgb(243, 215, 216);  
box-shadow:4px 4px 4px 4px rgb(243, 215,  
216) }
```

# Background

The CSS property to change the background color of an element to HunterLab 85.2135, 5.1690, 7.3967 is called "background". The background property can be set on classes, ids or directly on the HTML element.

```
.background, #background, body{  
background: rgb(243, 215, 216) }
```

If only the background color should be changed can be used:

```
.background{ background-color: rgb(243,  
215, 216) }
```

This example shows the color as background, it is applied via the CSS property "background".

To optimize and compress your CSS code, you can use our [online CSS compressor and optimizer](#) based on csstidy. If you want to create a linear or radial gradient as background or border, check our [CSS Gradient Generator](#).

Hey! You found this booklet interesting? Support Converting Colors with the new Membership Option!

The pro membership hides all ads, plus gives you double the colors in the color bucket, and more awesome pro features!

**[Learn more, Memberships starting at \\$2.50/m!](#)**

**Follow me  
on Twitter!**

@ConvertingColor