

Converting Colors

HunterLab(85.2273, 18.8329,
-12.9693)

Have a look what the booklet for
HunterLab(85.2273, 18.8329,
-12.9693) contains.

HunterLab(85.3469, 18.7747, -12.8044)	3
<i>Conversions</i>	4
<i>Details</i>	6
<i>Harmonies</i>	12
<i>Previews</i>	24
<i>Color Blindness Simulation</i>	28
<i>CSS Examples</i>	31

Color

**HunterLab(85.3469, 18.7747,
-12.8044)**

Conversions

Conversions Part 1

Format	Color
Hex	FBD0FF
RGB	251, 208, 255
RGB Percent	98%, 82%, 100%
CMY	0.0157, 0.1843, 0.0000
CMYK	0.02, 0.18, 0.00, 0.00
HSL	295°, 100%, 91%
HSV	295°, 18%, 100%
XYZ	80.3895, 72.8409, 104.4304
YIQ	226.2150, 10.5410, 23.7330

Conversions

Conversions Part 2

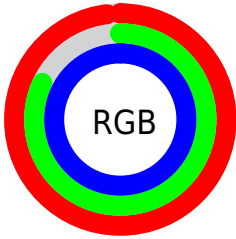
Format	Color
R _Y B	251, 208, 255
Decimal	16503039
CIE Lab	88.37, 22.97, -17.28
CIE LCh	88, 28.745, 323.042
Yxy	72.8440, 0.3120, 0.2827
Android (android.graphics.Color)	4294693119 (0xFFFBD0FF)
YUV	226.2150, 14.1910, 21.7364
Hunter-Lab	85.3469, 18.7747, -12.8044

Details

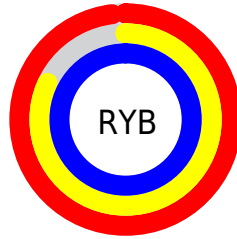
The HunterLab color $85.3469, 18.7747, -12.8044$ is a light color, and the websafe version is hex $FFCCFF$. A complement of this color would be $94.9062, -26.3454, 20.7374$, and the grayscale version is $87.2402, -4.6549, 4.7399$.

A 20% lighter version of the original color is $100.0000, -5.3358, 5.4332$, and $61.9104, 18.0342, -12.7001$ is the 20% darker color. If you saturate the color by 10%, you get $78.0975, 32.2098, -23.1370$, and if you desaturate by 10%, it is $93.1125, 5.5658, -2.7692$.

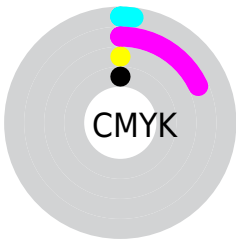
Distribution



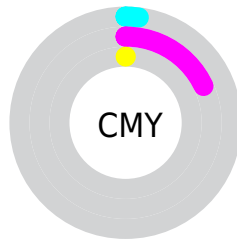
- Red (98%)
- Green (82%)
- Blue (100%)



- Red (98%)
- Yellow (82%)
- Blue (100%)



- Cyan (2%)
- Magenta (18%)
- Yellow (0%)
- Black (0%)



- Cyan (2%)
- Magenta (18%)
- Yellow (0%)

Brightness & Saturation Gradients

These gradients show how the HunterLab color 85.3469, 18.7747, -12.8044 changes by changing the brightness by 10 percent. The first figure shows a shift by +10% for each color and the second figure -10%.

Similar to the brightness gradients but the following saturation gradients show a change of the HunterLab color 85.3469, 18.7747, -12.8044 by changing the saturation by 10% instead.

85.3469, 18.7747,
-12.8044

85.3469, 18.7747,
-12.8044

216.9041, 19.5192,
-10.9928

73.3815, 18.3838,
-12.7605

111.0206, 19.3334,
-12.7196

62.0326, 17.9140,
-12.6588

124.6758, 19.5176,
-12.6025

51.3379, 17.3537,
-12.4929

138.8491, 19.6437,
-12.4384

41.3401, 16.6918,
-12.2585

153.5222, 19.7154,
-12.2299

32.0916, 15.9143,
-11.9528

168.6785, 19.7361,
-11.9792

23.6589, 15.0040,
-11.5769

184.3032, 19.7087,

16.1304, 13.9416,

-11.6883

-11.1466

200.3826, 19.6356,
-11.3590

■ 9.6313, 12.7175,
-10.7342

0.0000, INF, -NF

■ 85.3469, 18.7747,
-12.8044

■ 85.3469, 18.7747,
-12.8044

■ 78.0975, 32.2098,
-23.1370

■ 93.1125, 5.5658,
-2.7692

■ 71.4484, 45.7167,
-33.6818

100.0000, -5.3358,
5.4332

■ 65.5058, 58.9819,
-44.2334

■ 60.3852, 71.4911,
-54.4311

■ 56.1995, 82.5132,
-63.7359

■ 53.0352, 91.1943,
-71.4889

■ 50.9165, 96.8142,
-77.0971

■ 49.7387, 99.2452,
-80.3889

■ 49.5933, 99.4880,
-80.8050

Harmonies

Analogous

The Analogous color harmony consists of three colors that are next to each other on the color wheel.



85.3487, 6.5793, -23.3974



85.3469, 18.7747, -12.8044



85.3487, 24.7772, 1.3850

Triad

The Triadic color harmony groups three colors that are evenly spaced from another and form a triangle on the color wheel.



85.3487, 18.7722, -12.8020



85.3487, -1.1702, 26.9187



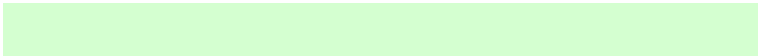
85.3487, -28.6276, -6.3484

Complementary

The Complementary color scheme is a pair of colors which are on the opposite of each other on the color wheel.



85.3469, 18.7747, -12.8044



94.9062, -26.3454, 20.7374

Split Complementary

Split-complementary colors differ from the complementary color scheme. The scheme consists of three colors, the original color and two neighbors of the complement color.



85.3487, -30.3995, 7.7827



85.3469, 18.7747, -12.8044



85.3487, -15.1530, 25.5462

Square

The Square scheme is like the rectangle color scheme, but the four colors are evenly spaced on the color wheel.



85.3487, 18.7722, -12.8020



85.3487, 12.7782, 23.1657



85.3487, -25.6246, 19.0444



85.3487, -20.6133, -19.2602

Rectangle

The Rectangle color scheme consists of four colors that form a rectangle on the color wheel.



85.3469, 18.7747, -12.8044



85.3487, 24.1993, 10.3920



85.3487, -25.6246, 19.0444



85.3487, -29.9502, -1.5300

Sweetspot

The Sweet Spot groups the original color and five complimentary colors.



85.3487, 18.7722, -12.8020



95.0672, 2.4015, -0.3815



82.5051, 2.2671, -17.1083



43.7381, 1.5039, -0.4726

0.0000, NaN, NaN



46.2646, -2.4686, 2.5136

Same Dimension

The Same Dimension uses a secret algorithm to generate beautiful new colors.



85.3487, 18.7722, -12.8020



82.6963, 23.5498, -16.4607



85.1131, 16.6624, -2.6496



42.6816, 3.2257, -1.7731



35.8944, 71.9802, -58.2775



11.2990, 22.6007, -17.8990

Inverse Universe

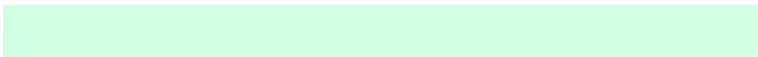
The Inverse Universe completely reimagines the original color for something new.



84.3375, 12.5888, 8.3984



81.4891, 16.2042, 9.0820



95.1136, -24.5474, 12.9660



42.4407, 1.7376, 3.1698



33.3872, 57.2911, 20.6864



10.4571, 18.0218, 5.8760

Previews

White Background



This preview shows how the HunterLab color 85.3469, 18.7747, -12.8044 looks on a white background.

Color Contrast Check

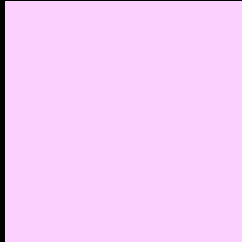
Large Text (above 18pt) WCAG AA × Fail

Any Text WCAG AA × Fail

Large Text (above 18pt) WCAG AAA × Fail

Any Text WCAG AAA × Fail

Black Background



This preview shows how the HunterLab color 85.3469, 18.7747, -12.8044 looks on a black background.

Color Contrast Check

Large Text (above 18pt) WCAG AA ✓ Pass

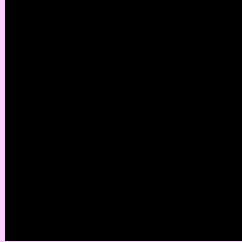
Any Text WCAG AA ✓ Pass

Large Text (above 18pt) WCAG AAA ✓ Pass

Any Text WCAG AAA ✓ Pass

If you want to check with other color combinations, try the [Color Contrast Checker](#).

HunterLab 85.3469, 18.7747, -12.8044 Background



This preview shows how black text looks on a background with the HunterLab color 85.3469, 18.7747, -12.8044.



This preview shows how white text looks on a background with the HunterLab color 85.3469, 18.7747, -12.8044.

-12.8044.

Color Blindness Simulation

Color vision deficiency is a very complex topic, and I could not describe the different causes any better than Wikipedia does, so if you want to learn more, you should check out their [article about color blindness](#).

Dichromacy



Original Color

85.3469, 18.7747, -12.8044

Protanopia

85.3542, 0.5073, -13.1140

Deuteranopia

85.3590, 6.6199, -11.8340



Tritanopia

85.4516, 9.8321, 1.3933

Trichromacy



Original Color

85.3469, 18.7747, -12.8044



Protanomaly

85.3380, 6.6997, -13.0282



Deuteranomaly

85.2929, 11.0632, -12.4291



Tritanomaly

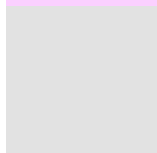
85.2749, 12.8652, -3.4693

Monochromacy



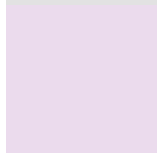
Original Color

85.3469, 18.7747, -12.8044



Achromatopsia

87.2081, -4.6532, 4.7382



Achromatomaly

86.2784, 3.9278, -1.8254

CSS Examples

Text

The CSS property to change the color of the text to HunterLab 85.3469, 18.7747, -12.8044 is called "color". The color property can be set on classes, ids or directly on the HTML element.

This example shows how text in the color `rgb(251, 208, 255)` looks like.

```
.text, #text, p{  
    color:rgb(251, 208, 255)  
}
```

If you want to add a text shadow in that color use the text-shadow property, you can generate a text shadow directly with our [CSS Text Shadow Generator](#).

Here you see how black text with a 4 pixel rgb(251, 208, 255) colored shadow looks like.

```
.shadow{ text-shadow: 4px 4px 2px rgb(251, 208, 255) }
```

Border

The CSS property to change the border of an element to HunterLab 85.3469, 18.7747, -12.8044 is called "border". The border property can be set on classes, ids or directly on the HTML element.

This example shows the color as border, it can be applied via the CSS property "border" or "border-color".

```
.border, #border, table{ border:4px solid rgb(251, 208, 255) }
```


If only the border color should be changed use the property `border-color`.

```
.border{ border-color:rgb(251, 208, 255) }
```

If you want to add a box shadow in that color use:

Here you see how a box with a 4 pixel `rgb(251, 208, 255)` colored shadow looks like.

```
.boxshadow{ -moz-box-shadow:4px 4px 4px  
4px rgb(251, 208, 255); -webkit-box-  
shadow:4px 4px 4px 4px rgb(251, 208, 255);  
box-shadow:4px 4px 4px 4px rgb(251, 208,  
255) }
```

Background

The CSS property to change the background color of an element to HunterLab 85.3469, 18.7747, -12.8044 is called "background". The background property can be set on classes, ids or directly on the HTML element.

```
.background, #background, body{  
background: rgb(251, 208, 255) }
```

If only the background color should be changed can be used:

```
.background{ background-color: rgb(251,  
208, 255) }
```

This example shows the color as background, it is applied via the CSS property "background".

To optimize and compress your CSS code, you can use our [online CSS compressor and optimizer](#) based on csstidy. If you want to create a linear or radial gradient as background or border, check our [CSS Gradient Generator](#).

Hey! You found this booklet interesting? Support Converting Colors with the new Membership Option!

The pro membership hides all ads, plus gives you double the colors in the color bucket, and more awesome pro features!

[Learn more, Memberships starting at \\$2.50/m!](#)

**Follow me
on Twitter!**

@ConvertingColor